

13. Electrical Box with Earth Terminal

13.1 KJB212A / KJB311A / KJB411A

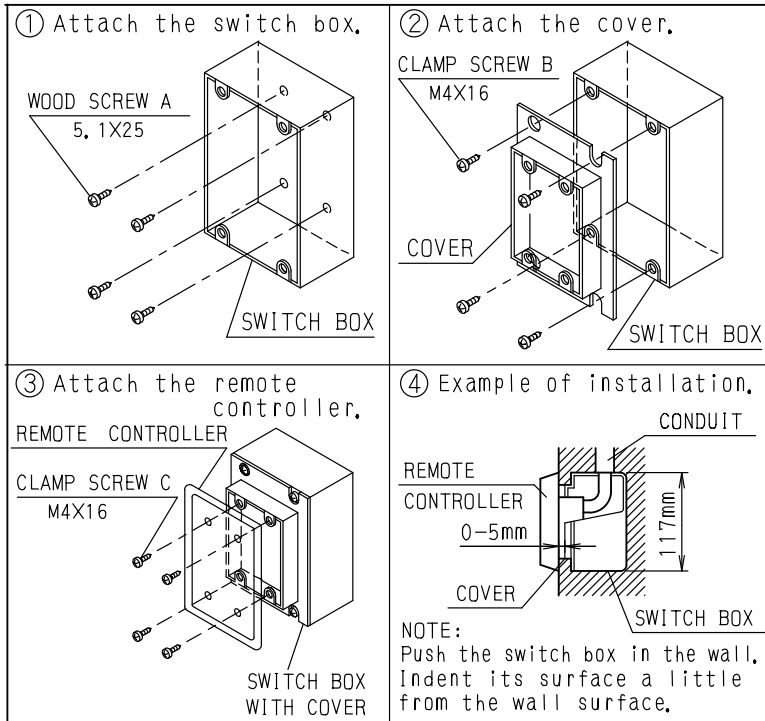


INSTALLATION POINT OF SWITCH BOX

PARTS • Check the parts according to the list shown below.

	NAME	SWITCH BOX	COVER	WOOD SCREW A (5.1×25)	CLAMP SCREW B (M4×16)	EARTH SCREW (M4×12)	C-CUP WASHER	LABEL FOR EARTH
QTY	KJB212A	1	1	4	4	3	2	1
	KJB311A	1	1	4	4	3	3	1
	KJB411A	1	1	4	4	—	—	—
SHAPE								

INSTALLATION



C: 3PA34878C

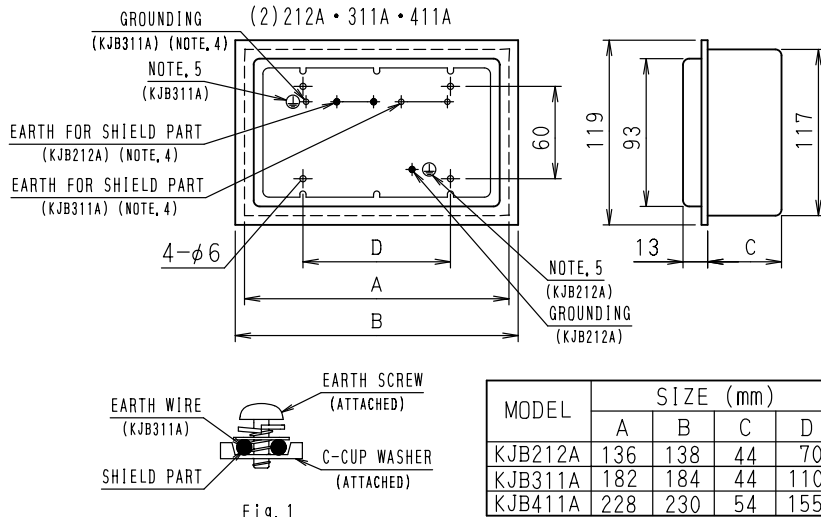


Fig. 1

- NOTES:
1. Refer to the installation of each remote controller.
 2. Do not bind the lead wires for switch box with the power cord and the link wiring. This may cause erratic operation.
 3. The remote controller and the clamp screw C are one kit. They are sold separately and attach to the switch box.
 4. Ground the shield part of shielded wire or earth wire (only KJB311A) as shown in the Fig. 1.
 5. Stick the label for earth attached to the equipment.

C: 3PA34878C