

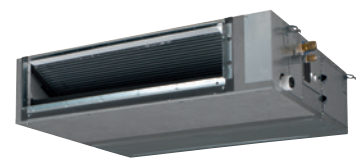


FBA-A / RZAG-M *SkyAir Alpha-series*

Slimmest yet most powerful medium static pressure unit on the market

- › Combinations with Sky Air Alpha series ensures best in class quality, highest efficiency and performance
- › Top efficiency in the market. Energy label up to A++
- › Slimmest unit in class, only 245mm (300mm built-in height) and therefore narrow ceiling voids are no longer a challenge
- › Lowest sound levels in the market: down to 25dBa
- › Medium external static pressure up to 150Pa facilitates using flexible ducts of varying lengths
- › Possibility to change ESP via wired remote control allows optimisation of the supply air volume
- › Discretely concealed in the ceiling: only the suction and discharge grilles are visible
- › Optional fresh air intake
- › Reduced energy consumption thanks to specially developed DC fan motor and drain pump
- › No optional adapter needed for DIII-connection, link your unit directly into the wider building management system
- › Flexible installation: air suction direction can be altered from rear to bottom suction and choice between free use or connection to optional suction grilles
- › Standard built-in drain pump with 625mm lift increases flexibility and installation speed

R-32 BLUEEVOLUTION



FBA-A



RZAG71

RZAG100-140



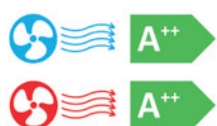
BRC1E53A



BRC4C65 (optional)



BRP069A81 (optional)



WI-FI ADAPTOR
AVAILABLE AS AN OPTION

FBA-A / RZAG-M

R-32 BLUEEVOLUTION

Indoor Units			Single Phase				3 Phase			
			FBA71A	FBA100A	FBA125A	FBA140A	FBA71A	FBA100A	FBA125A	FBA140A
Capacity	UK Total Cooling	kW	7.76	10.80	13.60	14.90	7.76	10.80	13.60	14.90
	UK Sensible Cooling	kW	5.32	7.44	9.30	10.25	5.32	7.44	9.30	10.25
	Nominal Cooling	kW	6.8	9.5	12.1	13.4	6.8	9.5	12.1	13.4
	Nominal Heating	kW	7.5	10.8	13.5	15.5	7.5	10.8	13.5	15.5
Seasonal Efficiency (EN14825) COOLING	Energy Label		A++	A++	-	-	A++	A++	-	-
	Pdesign	kW	6.8	9.5	12.1	13.4	6.8	9.5	12.1	13.4
	SEER		6.22	6.47	6.19	6.42	6.22	6.47	6.19	6.42
	Annual Energy Consumption	kWh	382	514	1173	1252	382	514	1173	1252
Seasonal Efficiency (EN14825) HEATING	Energy Label		A+	A+	-	-	A+	A+	-	-
	Pdesign	kW	4.70	7.80	9.52	9.52	4.70	7.80	9.52	9.52
	SCOP		4.20	4.36	4.12	4.11	4.20	4.36	4.12	4.11
	Annual Energy Consumption	kWh	1566	2505	3235	3243	1566	2505	3235	3243
Nominal Efficiency	EER/COP		3.66/4.47	4.20/4.81	3.33/4.61	3.11/4.16	3.66/4.47	4.20/4.81	3.33/4.61	3.11/4.16
Air Flow Rate (Cooling)	High / Nom / Low	m³/sec	0.300/0.250/0.208	0.483/0.433/0.383	0.566/0.483/0.391	0.566/0.483/0.391	0.300/0.250/0.208	0.483/0.433/0.383	0.566/0.483/0.391	0.566/0.483/0.391
			External Static Pressure	High / Nom	Pa	150/30	150/40	150/50	150/50	150/30
Dimensions	Height	mm	245	245	245	245	245	245	245	245
	Width	mm	1000	1400	1400	1400	1000	1400	1400	1400
	Depth	mm	800	800	800	800	800	800	800	800
Weight		kg	35	46	46	46	35	46	46	46
Sound Pressure (Cooling)	High / Nom / Low	dBA	30/28/25	34/32/30	37/35/32	37/35/32	30/28/25	34/32/30	37/35/32	37/35/32
Sound Pressure (Heating)	High / Nom / Low	dBA	31/28/25	36/33/30	38/35/32	38/35/32	31/28/25	36/33/30	38/35/32	38/35/32
Sound Power (Cooling)		dBA	56	58	62	62	56	58	62	62

Outdoor Units			RZAG71MV1	RZAG100MV1	RZAG125MV1	RZAG140MV1	RZAG71MY1	RZAG100MY1	RZAG125MY1	RZAG140MY1
Dimensions	Height x Width x Depth	mm	990 x 940 x 320	1430 x 940 x 320	1430 x 940 x 320	1430 x 940 x 320	990 x 940 x 320	1430 x 940 x 320	1430 x 940 x 320	1430 x 940 x 320
Weight		kg	70	92	92	92	70	92	92	92
Electrical Details	Power Supply		1ph	1ph	1ph	1ph	3ph	3ph	3ph	3ph
	Running Current	A	17.6	27.0	27.6	27.6	10.9	15.1	15.1	15.1
	Starting Current	A	-	-	-	-	-	-	-	-
	Max Fuse Size	A	20	32	32	32	16	16	16	16
Interconnection Wiring	Core / Cable Size		3+E / 1.5				3+E / 1.5			
Piping Connections	Liquid / Gas	inches (mm)	3/8 (9.5) / 5/8 (15.9)				3/8 (9.5) / 5/8 (15.9)			
Pipework	Maximum Length	m	55	85	85	85	55	85	85	85
	Maximum Vertical Rise	m	30	30	30	30	30	30	30	30
	Precharged to	m	40	40	40	40	40	40	40	40
	Additional charge	g/m	Refer to Installation Manual				Refer to Installation Manual			
	Holding charge	kg	2.95	3.75	3.75	3.75	2.95	3.75	3.75	3.75
Sound Pressure (Cooling)	Nom / Night Quiet	dBA	46/42	47/44	50/44	51/44	46/42	47/44	50/44	51/44
Sound Pressure (Heating)	Nom / Night Quiet	dBA	49/42	51/44	52/44	52/44	49/42	51/44	52/44	52/44
Sound Power (Cooling)		dBA	64	66	69	70	65	66	69	70
Operating Range (Cooling)	Min / Max	°CDB	-20/52	-20/52	-20/52	-20/52	-20/52	-20/52	-20/52	-20/52
Operating Range (Heating)	Min / Max	°CWB	-20/18	-20/18	-20/18	-20/18	-20/18	-20/18	-20/18	-20/18
Air Flow Rate (Cooling)	Nominal	m³/sec	0.983	1.166	1.383	1.383	0.983	1.166	1.383	1.383
ECA Eligible			●	●			●	●		

Accessory Ref	Description
BRC1E53A	Premium wired remote controller (Included as standard)
BRP069A81	Wifi adaptor for connection to on-line controller
BRC2E52C	Wired simplified remote controller (without auto swing)
BRC4C65	Wireless remote controller
K.CGL	Condensing unit guard size 100-140 including RXY5Q
K.CGM	Condensing unit guard size 42-71
K.CWB140-2	Condensing unit bracket - size 100 to 140
K.CWB90-2	Condensing unit bracket - up to size 71, max weight 90kg of ODU
K.DT1	Condensate drip tray for use with K.CWB90-2
K.DT2	Condensate drip tray for use with K.CWB140-2
K.RSS	Wireless room mounted temperature sensor and receiver
KLIC-DI	KNX Interface for Sky Air and VRV systems
KRCS01-4	Remote room mounted temperature sensor

Accessory Ref	Description
KRP4A53 and UK.FB2	Unit/group adaptor PCB for remote on/off, status indication and temperature setting
RS-SE	Service and configuration tool for K.RSS
RTD-10 and UK.FB2	Enhanced function PCB for Sky Air and VRV. Duty rotation, Lead Lag control and heating interlock
RTD-20 and UK.FB2	Energy control PCB for Sky Air and VRV
RTD-NET and UK.FB2	Modbus interface PCB for Sky Air and VRV
UK.RC3	Return Chamber - FBA60-71 - 2X200mm Spg
UK.RC3A	Return Chamber - FBA60-71 - 3X200mm Spg
UK.RC4	Return Chamber - FBA100-125-140 - 4X200mm Spg
UK.SF3	Supply flange - FBA60-71 - 2x200 Spg
UK.SF3A	Supply flange - FBA60-71 - 3x200 Spg
UK.SF4	Supply flange - FBA100-125-140 - 4x200 Spg

The present leaflet is drawn up by way of information only and does not constitute an offer binding upon Daikin UK. Daikin UK has compiled the content of this leaflet to the best of its knowledge. No express or implied warranty is given for the completeness, accuracy, reliability or fitness for particular purpose of its content and the products and services presented therein. Specifications are subject to change without prior notice. Daikin UK explicitly rejects any liability for any direct or indirect damage, in the broadest sense, arising from or related to the use and/or interpretation of this leaflet. All content is copyrighted by Daikin UK.



Daikin Europe N.V. participates in the Eurovent Certification programme for Air conditioning (AC), Liquid Chilling Packages (LCP), Air handling units (AHU) and Fan coil units (FCU). Check ongoing validity of certificate online: www.eurovent-certification.com or using: www.certiflash.com