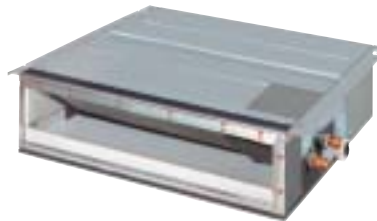




# FDKS-E/C RKS-D/E

## Slim concealed ceiling unit

new ➔



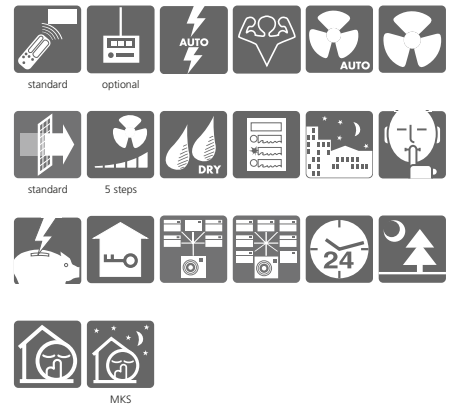
FDKS25,35E



RKS25,35D

- Slim design for flexible installation
- Compact dimensions: can easily be mounted in a ceiling void of only 240 mm
- Blends unobtrusively with any interior décor
- Can be installed in both new and existing buildings
- Leaves maximum floor and wall space for furniture, decorations and fittings
- Powerful mode can be selected for rapid cooling
- The home leave operation saves energy during absence

- Standard suction filter: removes airborne dust particles to ensure a steady supply of clean air
- Indoor unit silent operation
- Outdoor unit silent operation
- Night quiet mode (only in multi application and cooling only mode)
- Medium external static pressure facilitates unit use with flexible ducts of varying lengths



### COOLING ONLY

INDOOR UNIT			FDKS25E	FDKS35E	FDKS50C	FDKS60C
Cooling capacity	min~nom~max	kW	13~24~3.0	14~34~3.8	20~5.0~5.3	20~6.0~6.5
Nominal input	min~nom~max	kW	0.30~0.845~1.06	0.30~1.30~1.455	0.50~1.65~1.93	0.50~2.13~2.49
EER			2.84	2.62	3.03	2.82
Energy label			C	D	B	C
Annual energy consumption		kWh	423	650	825	1,065
Dimensions	HxWxD	mm	200x700x620		200x900x620	200x1100x620
Weight		kg	21		27	30
Air flow rate	H/L/SL	m <sup>3</sup> /min	8.7~7.3~6.2	8.7~7.3~6.2	12.0~10.0~8.4	16.0~13.5~11.2
Sound pressure level	H/L/SL	dB(A)	35/31/29	35/31/29	37/33/31	38/34/32
Sound power level	H	dB(A)	53	53	55	56
Refrigerant type			R-410A			
Power supply	V1/VM		1~, 220~240V, 50Hz		1~, 220~230/220-240V, 50/60Hz	
Infrared remote control			ARC433A8		ARC433A8	

Notes: 1) Energy label: scale from A (most efficient) to G (less efficient).  
2) Annual energy consumption: based on average use of 500 running hours per year full load (= nominal capacity).

OUTDOOR UNIT				RKS25D	RKS35D	RKS50E	RKS60E
Dimensions	HxWxD	mm	550x765x285		735x825x300		
Weight		kg	30		47		
Sound pressure level	cooling	H	46/43	47/44	47/44	49/46	
Sound power level	cooling	H	61	61	61	63	
Operation range	cooling	from~to	-10~46		(-15*)~-10~46		
Refrigerant type			R-410A				
Power supply		VM/V1	1~, 220~230/220-240V, 50/60Hz		1~, 220~240V, 50Hz		
Piping connections	liquid/gas	mm	ø6.4/ø9.5		ø6.4/ø12.7		
Max. piping length/Max. level difference		m	20/15		30/20		

\* This information was not available at the time of publication.  
\*\* Possibility to extend the operation range down to -15°C by turning ON the switch on the outdoor unit PCB. In this case, the unit will stop operation at -20°C or lower and will recover when temperature rises again.