

technical data



FDKS-EAVMB

**Concealed Ceiling,
Inverter Controlled Unit**

air conditioning systems

Split Sky Air

TABLE OF CONTENTS

FDKS-EAVMB

1	Features	2
2	Specifications	3
	For indoor units only	3
	Technical Specifications	3
	Electrical Specifications	4
3	Dimensional drawing & centre of gravity	5
	Dimensional drawing	5
	Centre of gravity	6
4	Piping diagram	7
5	Sound data	8
	Sound pressure spectrum	8
6	Fan characteristics	9

2 Specifications

2-1 FOR INDOOR UNITS ONLY			FDKS25EAVMB	FDKS35EAVMB
Nominal Input	Cooling	kW	0.071	0.071

2-2 TECHNICAL SPECIFICATIONS				FDKS25EAVMB	FDKS35EAVMB
Dimensions	Packing	Height	mm	274	274
		Width	mm	906	906
		Depth	mm	751	751
	Unit	Height	mm	200	200
		Width	mm	700	700
		Depth	mm	620	620
Weight	Unit		kg	21.0	21.0
	Packed Unit		kg	29.0	29.0
Heat Exchanger	Dimensions	Length	mm	500	500
		Nr of Rows		3	3
		Fin Pitch	mm	1.50	1.50
		Nr of Stages		12	12
	Tube type		Hi-XSS (7)		
	Fin	Type	ML fin (Multi louver)		
Fan	Type			Sirocco fan	
Air Flow Rate	Cooling	High	m ³ /min	8.7	8.7
		Medium	m ³ /min	8.0	8.0
		Low	m ³ /min	7.3	7.3
		Silent Operation	m ³ /min	6.2	6.2
Fan	Max	Standard	Pa	30	30
	Motor	Quantity		1	1
		Model		62C-23	
		Number of steps		5 steps, silent and auto	
Motor	Speed (cooling)	High	rpm	1270	1270
		Medium	rpm	1180	1180
		Low	rpm	1090	1090
		Silent Operation	rpm	940	940
Fan	Motor	Output (high)	W	62	62
Cooling	Sound Power	High	dBA	53.0	53.0
		Low	dBA	31.0	31.0
	Sound Pressure	High	dBA	35.0	35.0
		Medium	dBA	33.0	33.0
		Silent Operation	dBA	29.0	29.0
Refrigerant	Type			R-410A	
Piping connections	Liquid (OD)	Diameter (OD)	mm	6.35	6.4
	Gas	Diameter (OD)	mm	9.5	9.5
	Drain	Diameter (OD)	mm	I.D. 20/O.D. 26	
	Heat Insulation			Both liquid and gas pipes	
Air Filter	Removable/washable/Mildew proof				
Air direction control	Left, right, up and downwards				
Temperature control	Microcomputer control				

2 Specifications

2

2-2 TECHNICAL SPECIFICATIONS			FDKS25EAVMB	FDKS35EAVMB
Standard Accessories	Item		Installation manual	
	Quantity		1 pc	
	Item		Operation manual	
	Quantity		1 pc	
	Item		Infrared remote control	
	Quantity		1pc	1 pc
	Item		Batteries	
	Quantity		2 pcs	
	Item		Remote control holder	
	Quantity		1 pc	
	Item		Fixing screw for remote control	
	Quantity		2 pcs	
	Item		Signal receiver cover kit	
	Quantity		1 set	
	Item		Insulation for fitting	
	Quantity		1 set	
	Item		Sealing pad	
	Quantity		1 set	
	Item		Clamp metal	
	Quantity		1 pc	
	Item		Drain hose	
	Quantity		1 pc	
	Item		Washer for hanger bracket	
	Quantity		8 pcs	
	Item		Sealing material	
	Quantity		2 pcs	
	Item		Clamps	
Quantity		6 pcs		
Item		Washer fixing plate		
Quantity		4 pcs		
Item		Screws for duct flanges		
Quantity		1 set		
Item		Air filter		
Quantity		1 pc		
Notes			Sound values are measured in an anechoic room.	
			Sound pressure level is a relative value, depending on the distance and acoustic environment. For more details, please refer to sound level drawings of this chapter.	Sound pressure level is a relative value, depending on the distance and acoustic environment. For more details, please refer to sound level drawings of this chapter.
			The sound power level is an absolute value indicating the power which a sound source generates.	

2-3 ELECTRICAL SPECIFICATIONS				FDKS25EAVMB	FDKS35EAVMB
Power Supply	Name			VM	
	Phase			1	1
	Frequency		Hz	50/60	
	Voltage		V	220-240/220-230	
Current	Nominal running current (RLA)	Cooling	A	0.48	0.48
Wiring connections	For Power Supply	Quantity	3	3	
		Remark	4 for interunit wiring (included earth wiring)		
Voltage range	Minimum			-10%	
	Maximum			+10%	
Power Supply Intake				Outdoor unit only	

3 Dimensional drawing & centre of gravity

3 - 1 Dimensional drawing

FDK/XS25-35E

unit (mm)

Notes:

- In case of back-suction, mount chamber cover to bottom side of the unit.
In case of bottom-suction, mount chamber cover to back side of the unit.
- Location of unit's name plate: control box cover. (unit: mm).
- Mount the air filter at the suction side. (select its colorimethod (gravity method) 50% or more).
It can not be equipped with air filter (accessory) when connecting duct to suction side.
- Pipe specification

Legend:

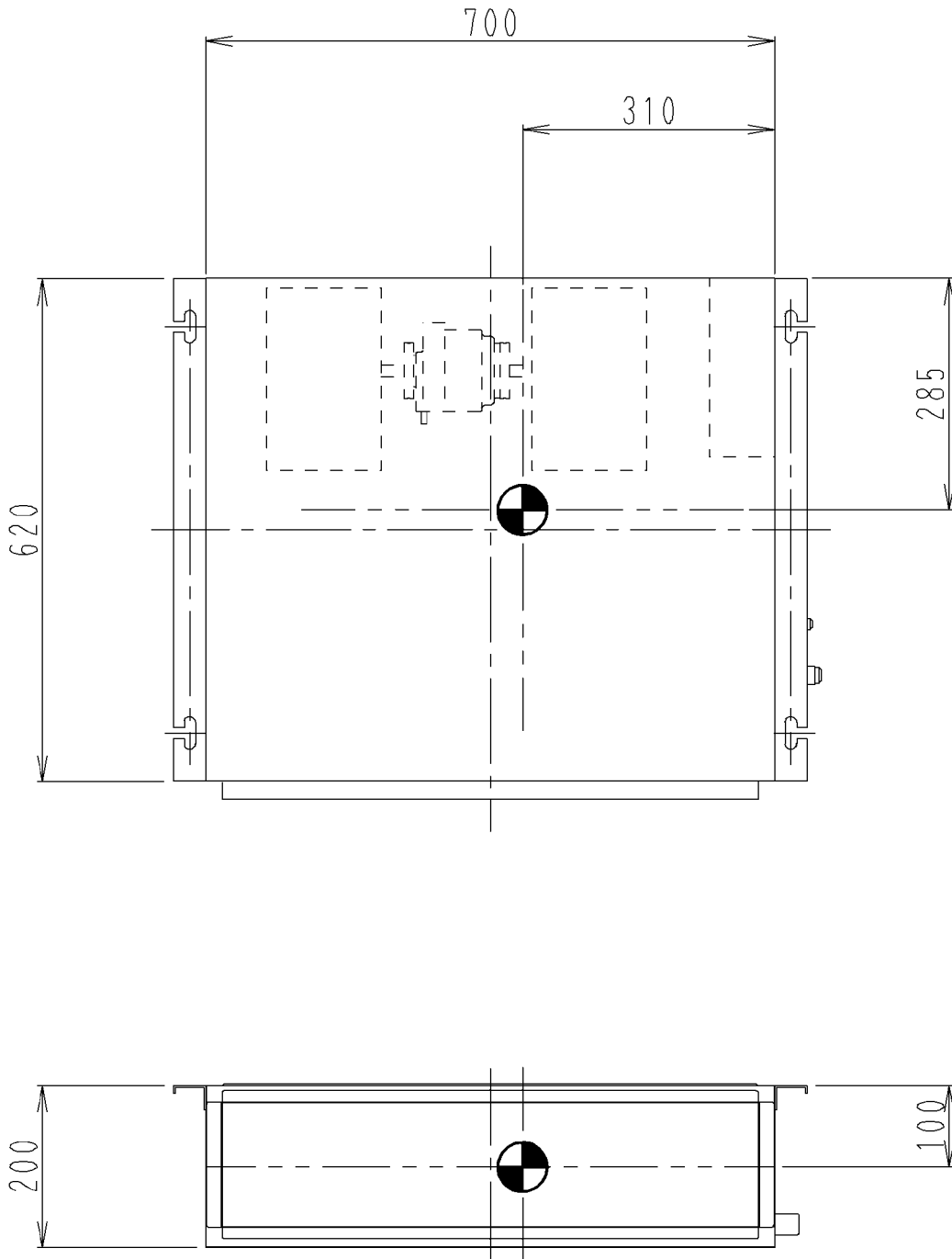
- Liquid pipe connection ϕ 6.4 (Flare connection)
- Gas pipe connection ϕ 9.5 (Flare connection)
- Socket for drain VP20 (O.D. ϕ 26 / I.D. ϕ 20)
- Drain hose (accessory) I.D. ϕ 25 (Outlet)
- Control box
- Infrared receiver unit connection
- Power supply connection
- Suspension bracket
- Air filter (accessory)
- Protection net

3D050379A

3 Dimensional drawing & centre of gravity

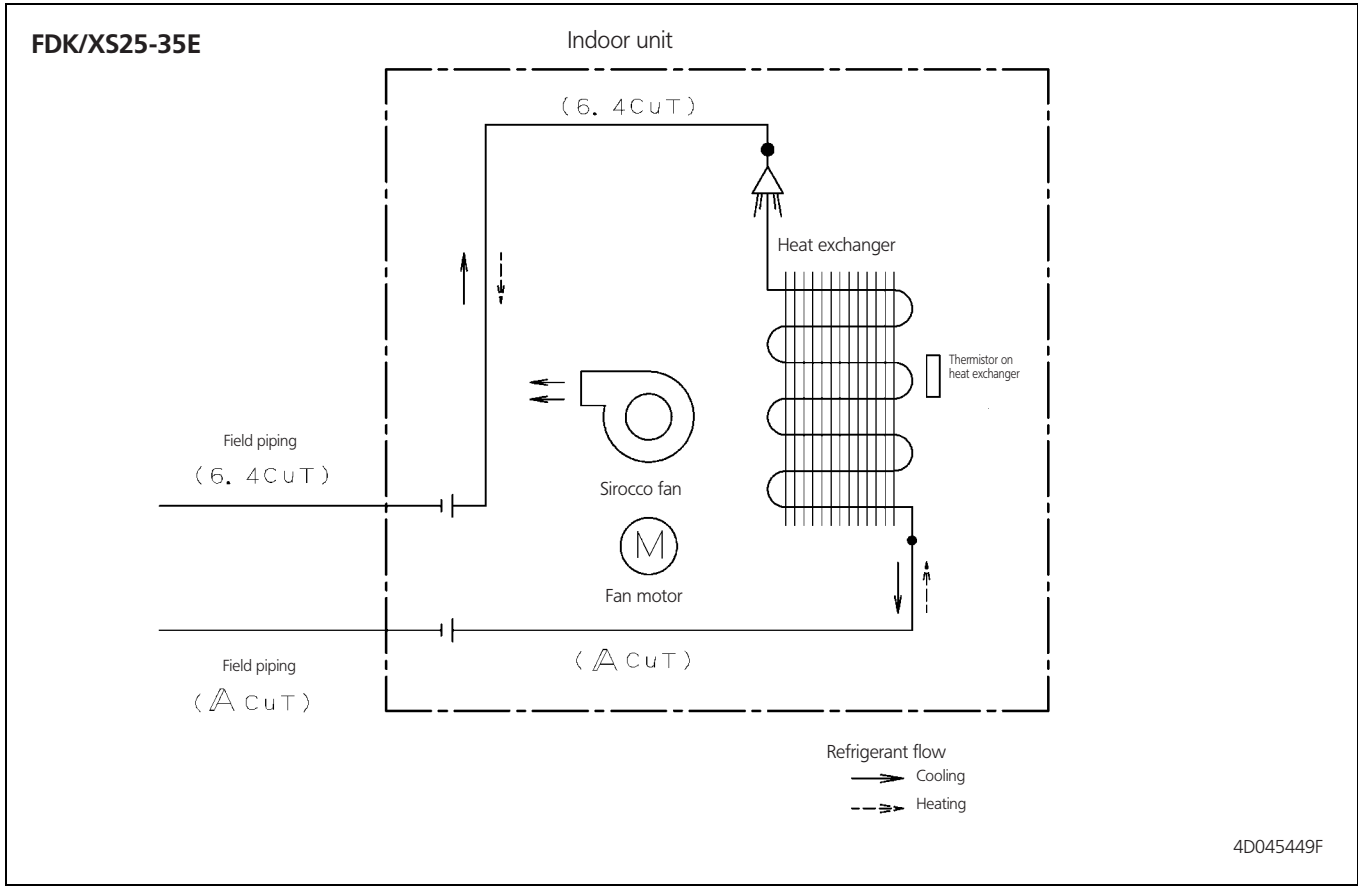
3 - 2 Centre of gravity

FDK/XS25-35E



4D049301B

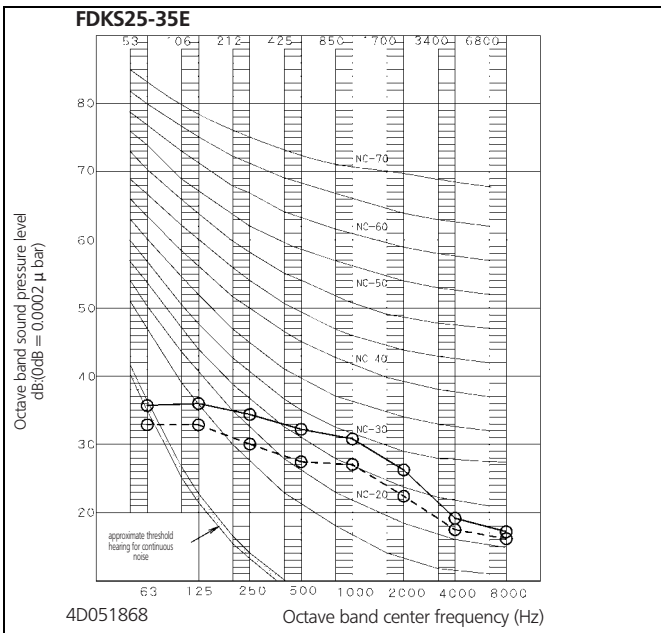
4 Piping diagram



5 Sound data

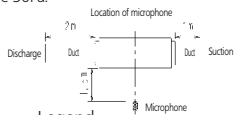
5 - 1 Sound pressure spectrum

5



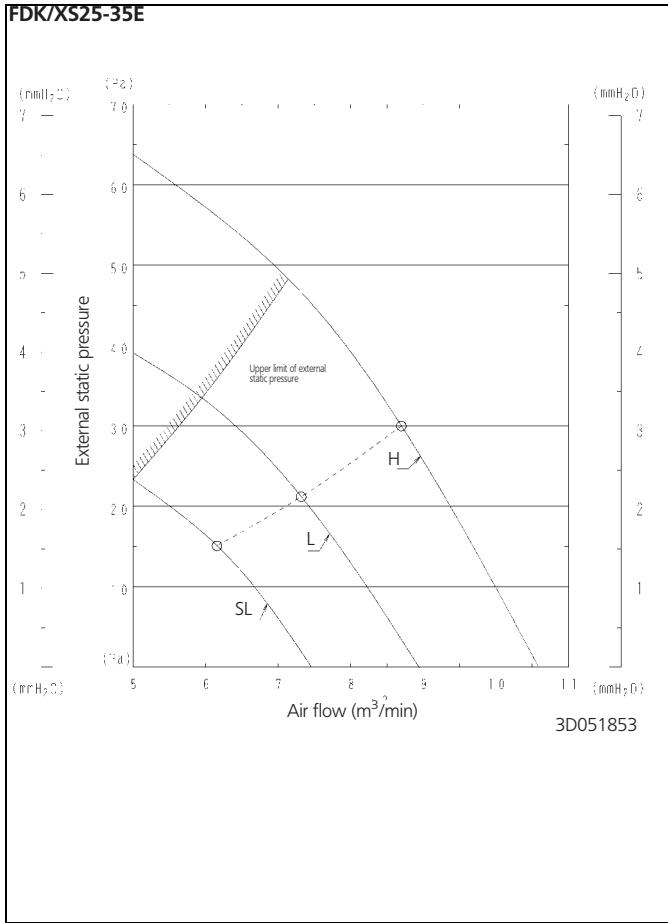
NOTES

- 1 Operation noise differs with operation and ambient conditions.
- 2 The operating sound is based on the rear side suction inlet, and the external static pressure 30Pa.



- Legend
- (H) 220-240V/50Hz, 220-230V/60Hz
 - (L) 220-240V/50Hz, 220-230V/60Hz

6 Fan characteristics



6 Fan characteristics

6

Split - Sky Air

The present publication is drawn up by way of information only and does not constitute an offer binding upon Daikin Europe N.V.. Daikin Europe N.V. has compiled the content of this publication to the best of its knowledge. No express or implied warranty is given for the completeness, accuracy, reliability or fitness for particular purpose of its content and the products and services presented therein. Specifications are subject to change without prior notice. Daikin Europe N.V. explicitly rejects any liability for any direct or indirect damage, in the broadest sense, arising from or related to the use and/or interpretation of this publication. All content is copyrighted by Daikin Europe N.V..



ISO14001 assures an effective environmental management system in order to help protect human health and the environment from the potential impact of our activities, products and services and to assist in maintaining and improving the quality of the environment.



Daikin units comply with the European regulations that guarantee the safety of the product.



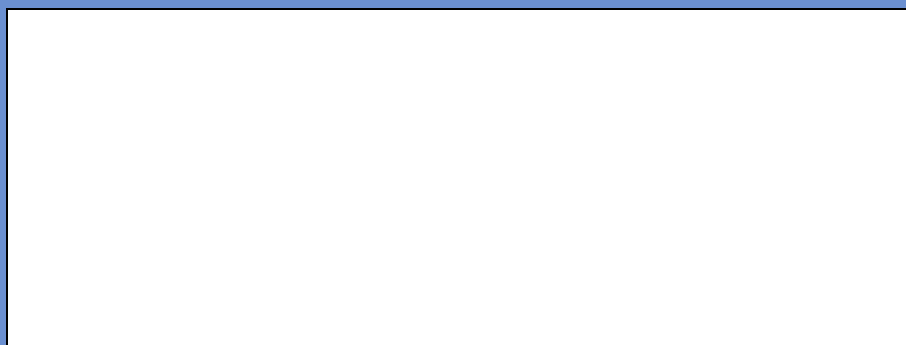
Daikin Europe N.V. is approved by LRQA for its Quality Management System in accordance with the ISO9001 standard. ISO9001 pertains to quality assurance regarding design, development, manufacturing as well as to services related to the product.



Daikin Europe N.V. is participating in the EUROVENT Certification Programme. Products are as listed in the EUROVENT Directory of Certified Products.

DAIKIN EUROPE N.V.

Zandvoordestraat 300
B-8400 Ostend - Belgium
www.daikineurope.com



EEDE06-1/3