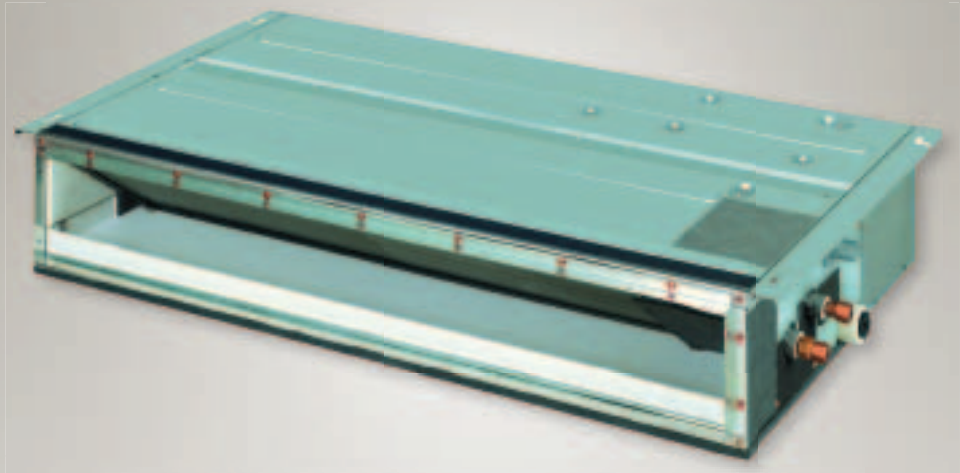




Air Conditioners

Technical Data

Concealed Ceiling Unit



EEDEN10-100

FDXS-E



Air Conditioners

Technical Data

Concealed Ceiling Unit



EEDEN10-100

FDXS-E

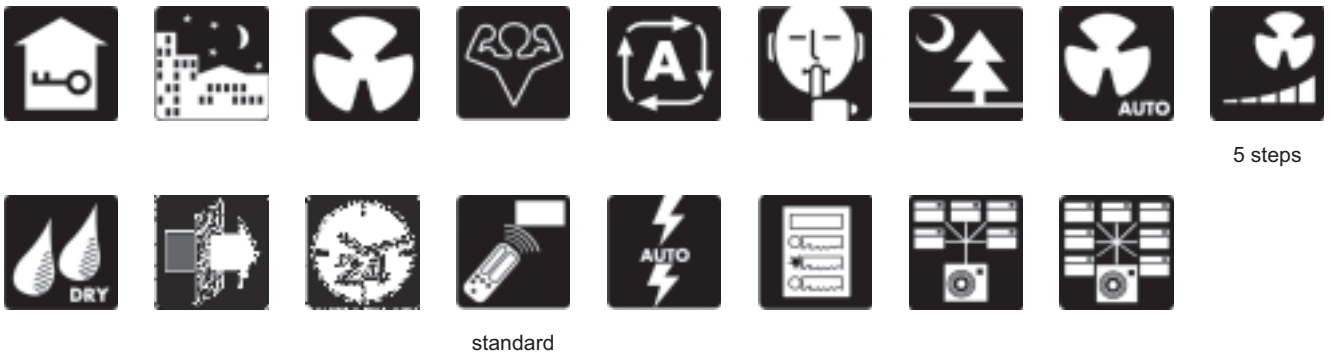
TABLE OF CONTENTS

FDXS-E

1	Features	2
2	Specifications	3
	Technical Specifications	3
	Electrical Specifications	4
3	Options	5
	Options	5
4	Dimensional drawings	6
	Dimensional Drawings	6
5	Centre of gravity	7
	Centre of Gravity	7
6	Piping diagrams	8
	Piping Diagrams	8
7	Wiring diagrams	9
	Wiring Diagrams - Single Phase	9
8	Sound data	10
	Sound Pressure Spectrum	10
9	Fan characteristics	11
	Fan Characteristics	11

1 Features

- Compact dimensions, can easily be mounted in a ceiling void of only 240mm
- Blends unobtrusively with any interior décor: only the suction and discharge grilles are visible
- Medium external static pressure facilitates unit use with flexible ducts of varying lengths
- Home leave operation maintains the indoor temperature at your specified comfort level during absence, thus saving energy
- Night set mode saves energy by preventing overcooling or overheating during night time
- Powerful mode can be selected for rapid heating or cooling; after the powerful mode is turned off, the unit returns to the preset mode.
- Whisper quiet operation: down to 29dBA sound pressure level
- Indoor unit silent operation: "silent" button on the remote control lowers the operation sound of the indoor unit by 3dBA
- Standard air filter removes airborne dust particles to ensure a steady supply of clean air



2 Specifications

2-1 Technical Specifications				FDXS25E7VMB	FDXS35E7VMB	
Power input - 50Hz	Cooling	Nom.	kW	0.071		
	Heating	Nom.	kW	0.071		
Dimensions	Unit	Height	mm	200		
		Width	mm	700		
		Depth	mm	620		
	Packed unit	Height	mm	274		
		Width	mm	906		
		Depth	mm	751		
Weight	Unit		kg	21.0		
	Packed unit		kg	29.0		
Heat exchanger	Rows	Quantity		3		
	Fin pitch		mm	1.5		
	Stages	Quantity		12		
	Tube type			ø7 Hi-XSS		
	Fin	Type		ML fin (Multi louver)		
	Type			Sirocco fan		
Fan	Air flow rate	Cooling	High	m ³ /min	8.7	
				cfm	307	
			Nom.	m ³ /min	8.0	
				cfm	282	
			Low	m ³ /min	7.3	
				cfm	258	
		Silent operation	m ³ /min	6.2		
			cfm	219		
		Heating	High	m ³ /min	8.7	
				cfm	307	
			Nom.	m ³ /min	8.0	
				cfm	282	
	Low		m ³ /min	7.3		
			cfm	258		
	Silent operation	m ³ /min	6.2			
		cfm	219			
External static pressure		Nom.	Pa	30		
Fan motor	Quantity			1		
	Model			62C-23		
	Speed	Steps			5 + silent, + auto	
		Cooling	High	rpm	1270	
				rpm	1180	
			Low	rpm	1090	
				Silent operation	rpm	940
		Heating	High	rpm	1270	
				rpm	1180	
			Low	rpm	1090	
Silent operation	rpm			940		
Output	High	W	62			
Sound power level	Cooling	High	dBA	53.0		
	Heating	High	dBA	53.0		
Sound pressure level	Cooling	High	dBA	35.0		
		Nom.	dBA	33.0		
		Low	dBA	31.0		
		Silent operation	dBA	29.0		
	Heating	High	dBA	35.0		
		Nom.	dBA	33.0		
		Low	dBA	31.0		
		Silent operation	dBA	29.0		
Piping connections	Sound absorbing insulation			-		

2 Specifications

2-1 Technical Specifications	FDXS25E7VMB	FDXS35E7VMB
Air filter	Removable/washable/Mildew proof	
Temperature control	Microcomputer control	
Notes	SL: The silent fan level of the air flow rate setting	

2-2 Electrical Specifications			FDXS25E7VMB	FDXS35E7VMB
Power supply	Name		VM	
	Phase		1	
	Frequency	Hz	50/60	
	Voltage	V	220-240/220-230	
Wiring connections - 50Hz	For power supply	Quantity	3	
		Remark	4 for interunit wiring (earth wire included)	

3 Options

3 - 1 Options

Kit name	Models	FDX(K)S25E7	FDX(K)S50C7
		FDX(K)S35E7	FDX(K)S60C7
Wired remote control			BRC944A2B
Wired remote control cord	Length 3m (Shield wire)		BRCW901A03
	Length 5m (Shield wire)		BRCW901A08
Wiring adapter for time clock	Normal open contact		KRP413A1S
Remote control	Normal open pulse contact		KRP413A1S
Centralised control board	Up to 5 rooms		KRC72A
Central remote control			DCS302CA51
Unified on/off control			DCS301BA51
Schedule timer			DST301BA51
Interface adapter			KRP928BA2S
Anti-theft protection for remote control			KKF917AA4
Suction grille			KDGF19A45

4D068402

4 Dimensional drawings

4 - 1 Dimensional Drawings

FDKS/FDXS25_35E7

IN CASE OF BOTTOM SUCTION

IN CASE OF BACK SUCTION

INFRARED REMOTE CONTROL

VIEW A
Inspection door (Ceiling opening)

NOTES

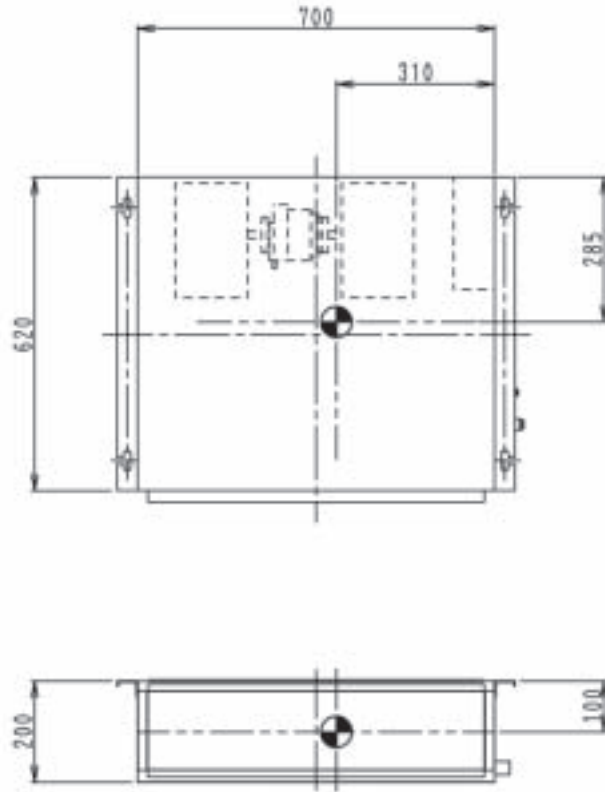
Item	Name	Description
1	Liquid pipe connection	Ø6.4 Flare connection
2	Gas pipe connection	Ø12.7 Flare connection
3	Socket for drain	VP20 (OD Ø26, ID Ø20)
4	Drain hose (accessory)	ID Ø25 (Outlet)
5	Control box	
6	Infrared receiver unit connection	
7	Power supply connection	
8	Suspension bracket	
9	Air filter (accessory)	

3TW32964-1

5 Centre of gravity

5 - 1 Centre of Gravity

FDKS/FDXS25-35E7

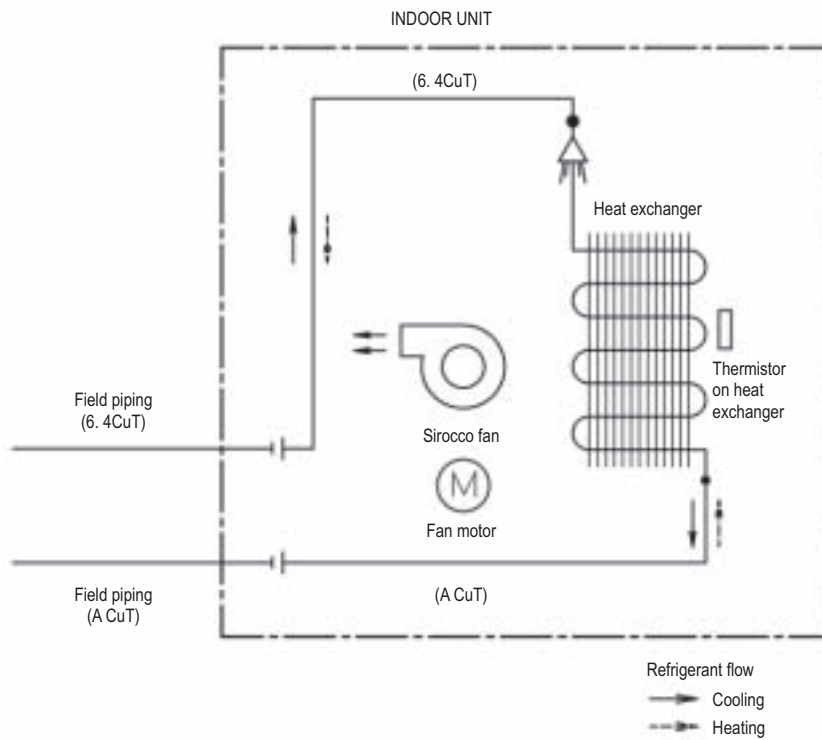


4D049301E

6 Piping diagrams

6 - 1 Piping Diagrams

FDKS/FDXS25-35E7
FDKS/FDXS50-60C7



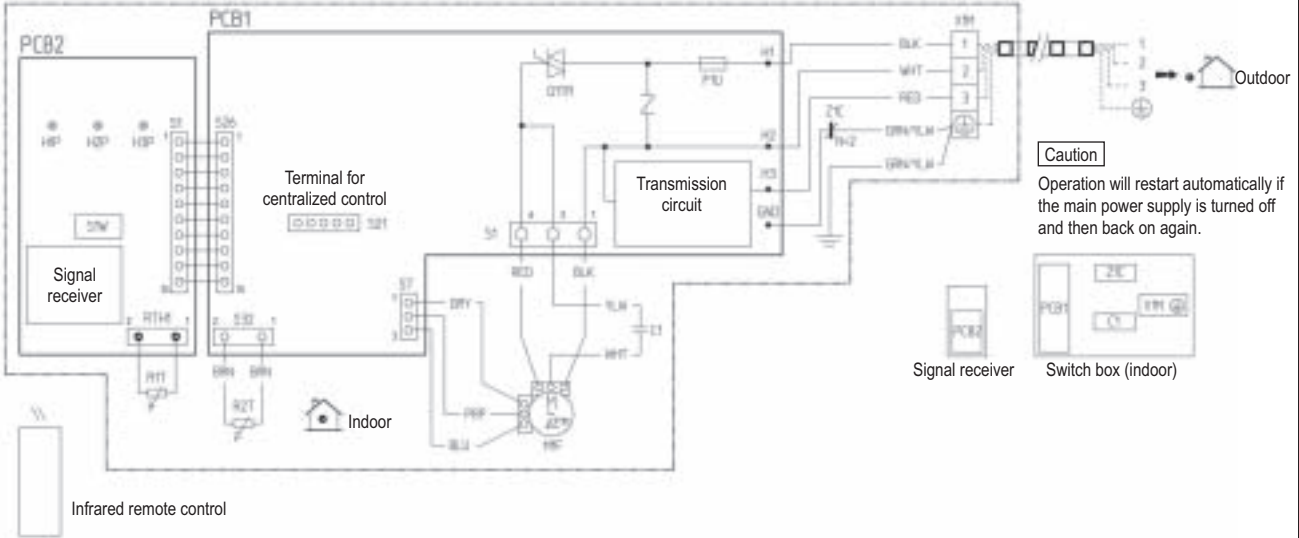
	A
FDKS25E7V1B	9.5
FDKS35E7V1B	
FDXS25E7V1B	
FDXS35E7V1B	
FDKS50C7V1B	12.7
FDKS60C7V1B	
FDXS50C7V1B	
FDXS60C7V1B	

4D045449L

7 Wiring diagrams

7 - 1 Wiring Diagrams - Single Phase

FDXS_FDKS-C7_E7



Indoor unit		PCB2	Signal receiver
C1	Capacitor	O1TR	Phase control circuit
F1M	Thermal protector (M1F Embedded)	R1T, R2T	Thermistor
F1U	Fuse (3.15, 250V)	S1~S32, RTH1	Connector
H1P~H3P	Light emitting diode	S1W	Operation switch
M1F	Motor (fan)	X1M	Terminal strip
PCB1	Printed circuit board	Z1C	Noise filter (Ferrite core)

- : Field wiring
 : Protective earth (screw)
 : Connector
 • : Wire clamp
- Colors: BLK: Black ORG: Orange WHT: White
 BLU: Blue PNK: Pink YLW: Yellow
 BRN: Brown PRP: Purple GRN: Green
 GRY: Grey RED: Red

8 Sound data

8 - 1 Sound Pressure Spectrum

FDXS25-35E7

COOLING

Octave band sound pressure level dB (0dB = 0.0002µ bar)

Octave band center frequency (Hz)

Approximate threshold hearing for continuous noise

HEATING

Octave band sound pressure level dB (0dB = 0.0002µ bar)

Octave band center frequency (Hz)

Approximate threshold hearing for continuous noise

NOTES

- Over All (dB): (B,G,N is already rectified)
- Measuring place: measure in anechoic room
- Operation noise differs with operation and ambient conditions
- The operating sound is based on the rear side suction inlet, and the external static pressure 30Pa.
- Location of microphone

Scale	220-240V/50Hz 220-230V/60Hz (H)	220-240V/50Hz 220-230V/60Hz (L)
A	35	31

Discharge Duct Suction

Microphone

NOTES

- Over All (dB): (B,G,N is already rectified)
- Measuring place: measure in anechoic room
- Operation noise differs with operation and ambient conditions
- The operating sound is based on the rear side suction inlet, and the external static pressure 30Pa.
- Location of microphone

Scale	220-240V/50Hz 220-230V/60Hz (H)	220-240V/50Hz 220-230V/60Hz (L)
A	35	31

Discharge Duct Suction

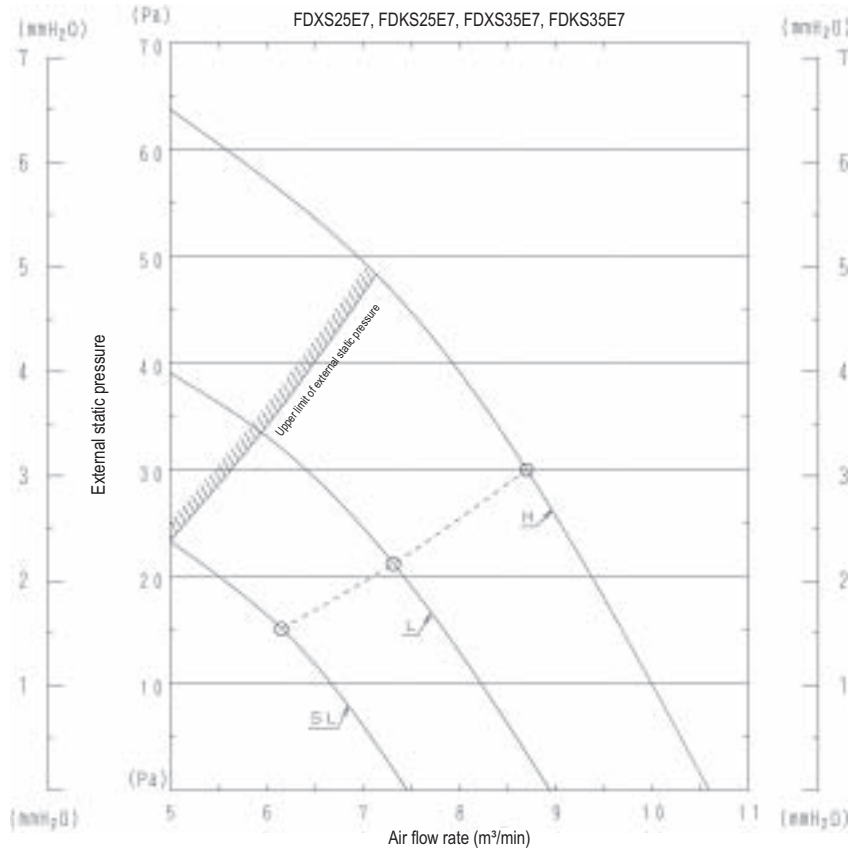
Microphone

3D051866A

9 Fan characteristics

9 - 1 Fan Characteristics

FDKS/FDXS25-35E7



3D051853A



Daikin's unique position as a manufacturer of air conditioning equipment, compressors and refrigerants has led to its close involvement in environmental issues. For several years Daikin has had the intention to become a leader in the provision of products that have limited impact on the environment. This challenge demands the eco design and development of a wide range of products and an energy management system, resulting in energy conservation and a reduction of waste.



The present publication is drawn up by way of information only and does not constitute an offer binding upon Daikin Europe N.V. Daikin Europe N.V. has compiled the content of this publication to the best of its knowledge. No express or implied warranty is given for the completeness, accuracy, reliability or fitness for particular purpose of its content and the products and services presented therein. Specifications are subject to change without prior notice. Daikin Europe N.V. explicitly rejects any liability for any direct or indirect damage, in the broadest sense, arising from or related to the use and/or interpretation of this publication. All content is copyrighted by Daikin Europe N.V.

Daikin products are distributed by:



Daikin Europe N.V. is participating in the EUROVENT Certification Programme. Products are as listed in the EUROVENT Directory of Certified Products. Multi units are Eurovent certified for combinations up to 2 indoor units