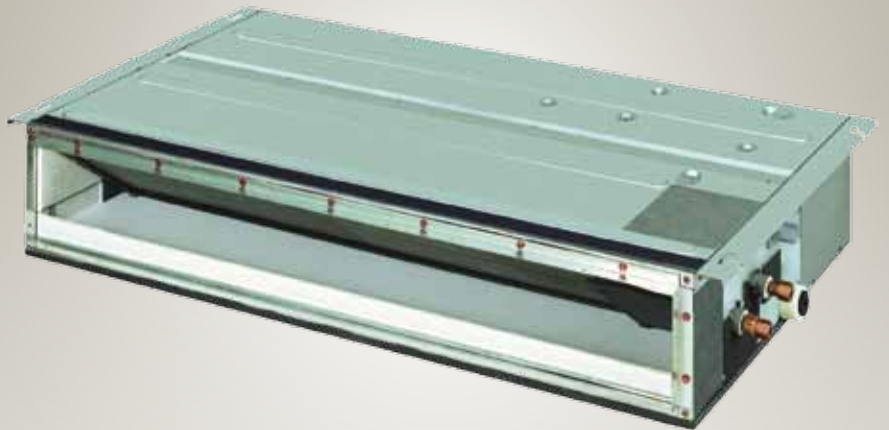


Air Conditioners

Technical Data

Concealed ceiling unit



EEDEN12-100

FDXS-C

TABLE OF CONTENTS

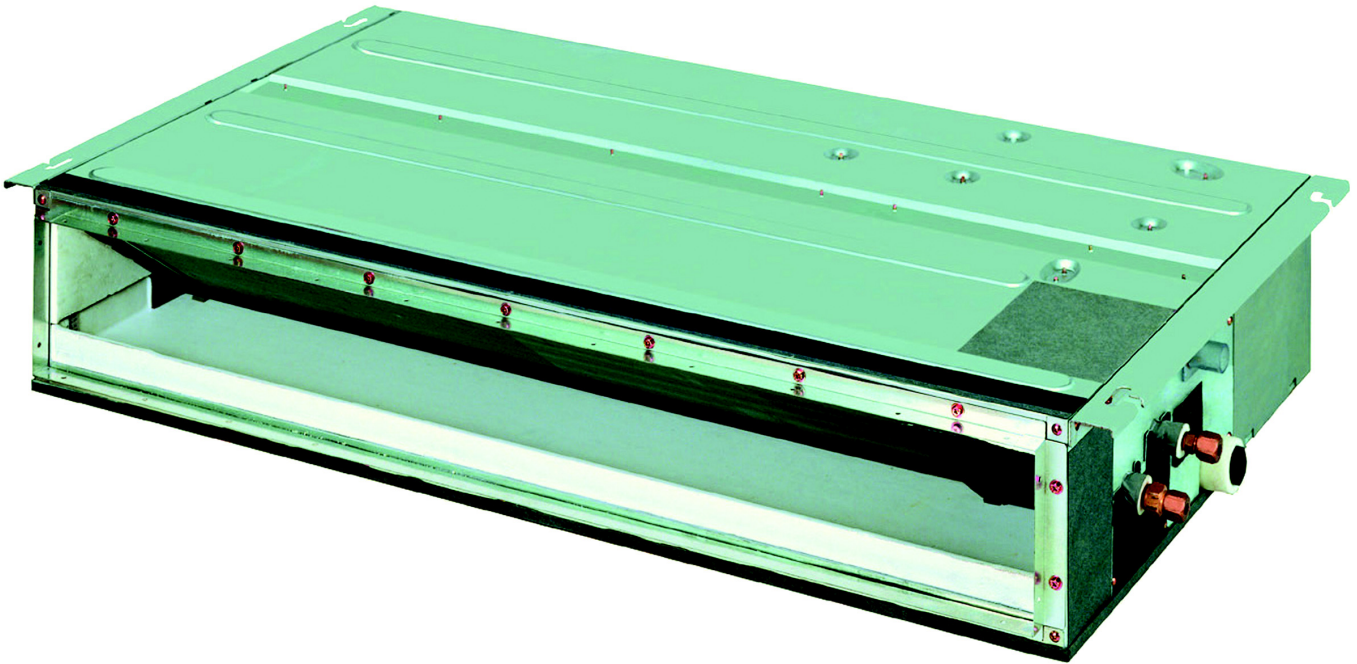
FDXS-C

1	Features	2
2	Specifications	3
	Technical Specifications	3
	Electrical Specifications	4
3	Options	5
	Options	5
4	Dimensional drawings	6
	Dimensional Drawings	6
5	Centre of gravity	7
	Centre of Gravity	7
6	Piping diagrams	8
	Piping Diagrams	8
7	Sound data	9
	Sound Pressure Spectrum	9
8	Fan characteristics	10
	Fan Characteristics	10

1 Features

- 24 hour timer can be set to start heating or cooling anytime during a 24 hour period
- Compact dimensions, can easily be mounted in a ceiling void of only 240mm
- Weekly timer can be set to start heating or cooling anytime on a daily or weekly basis
- Blends unobtrusively with any interior décor: only the suction and discharge grilles are visible
- Medium external static pressure facilitates unit use with flexible ducts of varying lengths
- Home leave operation maintains the indoor temperature at your specified comfort level during absence, thus saving energy
- Night set mode saves energy by preventing overcooling or overheating during night time
- Powerful mode can be selected for rapid heating or cooling; after the powerful mode is turned off, the unit returns to the preset mode.
- Indoor/outdoor unit silent operation: "silent" buttons on the remote control lower the operating sound of the indoor and/or outdoor unit by 3dBA each
- Standard air filter removes airborne dust particles to ensure a steady supply of clean air

1



5 steps



optional

2 Specifications

2-1 Technical Specifications				FDXS50C	FDXS60C	
Power input - 50Hz	Cooling	Nom.	kW	0.140	0.160	
Dimensions	Unit	Height/Width/Depth	mm	200/900/620	200/1,100/620	
	Packed unit	Height/Width/Depth	mm	266/1,106/751	266/1,306/751	
Weight	Unit		kg	27.0	30.0	
	Packed unit		kg	34.0	37.0	
Heat exchanger	Length		mm	700	900	
	Rows	Quantity		3	2	
	Fin pitch		mm	1.5		
	Stages	Quantity		12		
	Tube type			ø7 Hi-XSS		
	Fin	Type		ML fin (Multi louver)		
	Fan	Type			Sirocco fan	
Air flow rate		Cooling	High	m³/min	12.0	16.0
				cfm	424	565
			Nom.	m³/min	11.0	14.8
				cfm	388	523
			Low	m³/min	10.0	13.5
				cfm	353	477
		Silent operation	m³/min	8.4	11.2	
			cfm	297	395	
		Heating	High	m³/min	12.0	16.0
				cfm	424	565
			Nom.	m³/min	11.0	14.8
				cfm	388	523
Low			m³/min	10.0	13.5	
			cfm	353	477	
Silent operation	m³/min	8.4	11.2			
	cfm	297	395			
External static pressure	Nom.	Pa	40			
Fan motor	Quantity			1		
	Model			130J-23		
	Speed	Steps			5 + silent, + auto	
		Cooling	High/Medium/Low/Silent operation	rpm	1,270/1,180/1,080/930	1,280/1,160/1,040/890
			Heating	High/Medium/Low/Silent operation	rpm	1,270/1,180/1,080/930
Output	High	W	130			
Sound power level	Cooling	High	dBA	55.0	56.0	
	Heating	High	dBA	55.0	56.0	
Sound pressure level	Cooling	High/Nom./Low/Silent operation	dBA	37.0/35.0/33.0/31.0	38.0/36.0/34.0/32.0	
	Heating	Super high/High/Nom./Low/Silent operation	dBA	-/37.0/35.0/33.0/31.0	-/38.0/36.0/34.0/32.0	
Refrigerant	Type			R-410A		
Piping connections	Liquid	OD		6.35		
	Gas	OD		12.7		
	Drain			VP20 (I.D. 20/O.D. 26)		
	Heat insulation			Both liquid and gas pipes		
Temperature control				Microcomputer control		
Air filter	Type			Removable / washable / mildew proof		

Standard Accessories : Air filter; Quantity : 1;

Standard Accessories : Screws for duct flanges; Quantity : 1;

Standard Accessories : Washer fixing plate; Quantity : 4;

Standard Accessories : Clamps; Quantity : 6;

Standard Accessories : Sealing material; Quantity : 2;

Standard Accessories : Washer for hanger bracket; Quantity : 8;

2 Specifications

- Standard Accessories : Drain hose; Quantity : 1;
 Standard Accessories : Clamp metal; Quantity : 1;
 Standard Accessories : Sealing pad; Quantity : 1;
 Standard Accessories : Insulation for fitting; Quantity : 1;
 Standard Accessories : Signal receiver cover kit; Quantity : 1;
 Standard Accessories : Fixing screw for remote control; Quantity : 2;
 Standard Accessories : Remote control holder; Quantity : 1;
 Standard Accessories : Batteries; Quantity : 2;
 Standard Accessories : Wireless remote control; Quantity : 1;
 Standard Accessories : Operation manual; Quantity : 1;
 Standard Accessories : Installation manual; Quantity : 1;
 Standard Accessories : Infrared remote control; Quantity : 1;

2

2-2 Electrical Specifications				FDXS50C	FDXS60C
Power supply	Name			VM	
	Phase			1~	
	Frequency	Hz		50/60	
	Voltage		V	220-240/220-230	
Current	Nominal running current (RLA) - 50Hz	Cooling	A	0.64	0.74
		Heating	A	0.64	0.74
Current - 60Hz	Nominal running current		A	-	
Wiring connections - 50Hz	For power supply	Quantity		3	
		Remark		4 for interunit wiring (earth wire included)	

Notes

(1) SL: The silent fan level of the air flow rate setting

3 Options

3 - 1 Options

Kit name	Models	FDX(K)S25E7	FDX(K)S50C7
		FDX(K)S35E7	FDX(K)S60C7
Wired remote control			BRC944A2B
Wired remote control cord	Length 3m (Shield wire)		BRCW901A03
	Length 5m (Shield wire)		BRCW901A08
Wiring adapter for time clock	Normal open contact		KRP413A1S
Remote control	Normal open pulse contact		KRP413A1S
Centralised control board	Up to 5 rooms		KRC72A
Central remote control			DCS302CA51
Unified on/off control			DCS301BA51
Schedule timer			DST301BA51
Interface adapter			KRP928BA2S
Anti-theft protection for remote control			KKF917AA4
Suction grille			KDGF19A45

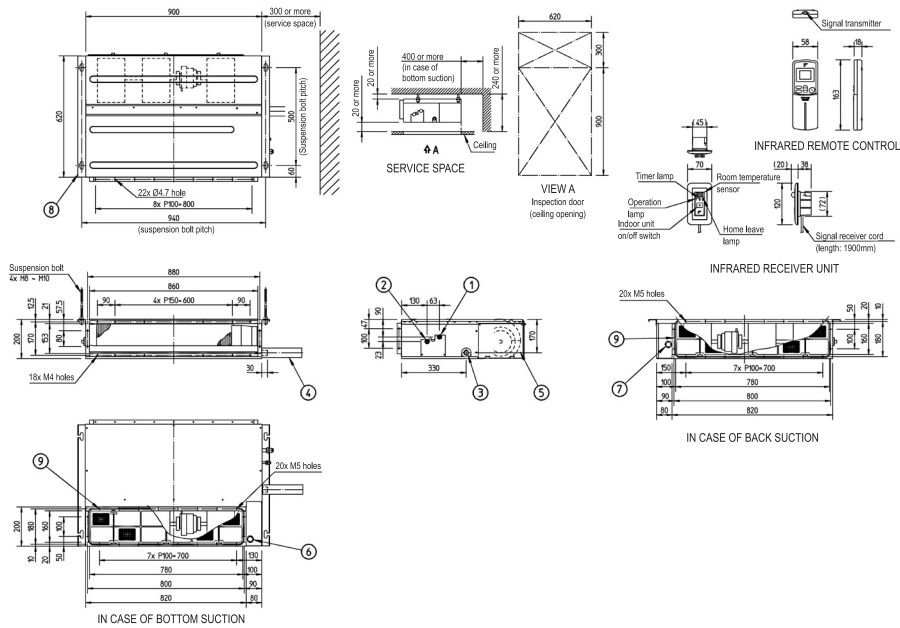
4D068402

4 Dimensional drawings

4 - 1 Dimensional Drawings

4

FDXS50C



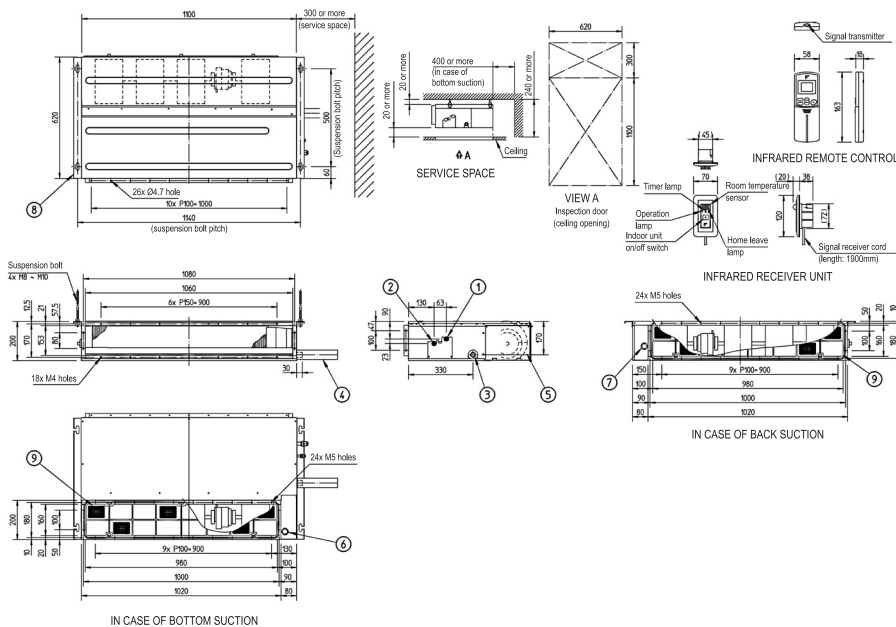
3TW32984-1

Item	Name	Description
1	Liquid pipe connection	Ø6.4 Flare connection
2	Gas pipe connection	Ø12.7 Flare connection
3	Socket for drain	VP20 (OD Ø26, ID Ø20)
4	Drain hose (accessory)	ID Ø25 (Outlet)
5	Control box	
6	Infrared receiver unit connection	
7	Power supply connection	
8	Suspension bracket	
9	Air filter (accessory)	

NOTES

1. In case of back suction, mount chamber cover to bottom side of the unit.
In case of bottom suction, mount chamber cover to back side of the unit.
2. Location of unit name plate: control box cover.
3. Mount the air filter at the suction side. (Use an air filter whose dust collecting efficiency is at least 50% in a gravimetric technique). It can not be equipped with air filter (accessory) when connecting duct to suction side.

FDXS60C



3TW32994-1

Item	Name	Description
1	Liquid pipe connection	Ø6.4 Flare connection
2	Gas pipe connection	Ø12.7 Flare connection
3	Socket for drain	VP20 (OD Ø26, ID Ø20)
4	Drain hose (accessory)	ID Ø25 (Outlet)
5	Control box	
6	Infrared receiver unit connection	
7	Power supply connection	
8	Suspension bracket	
9	Air filter (accessory)	

NOTES

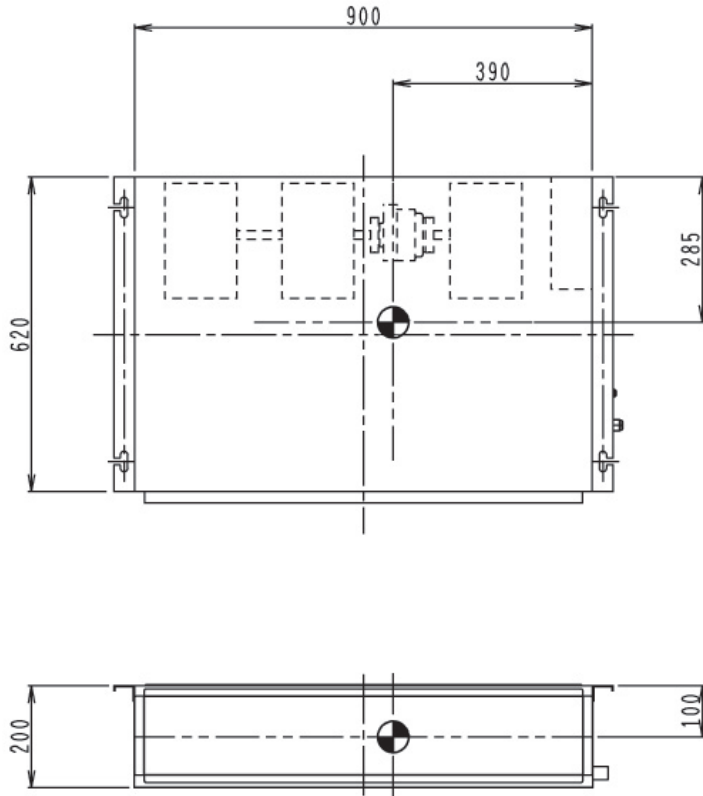
1. In case of back suction, mount chamber cover to bottom side of the unit.
In case of bottom suction, mount chamber cover to back side of the unit.
2. Location of unit name plate: control box cover.
3. Mount the air filter at the suction side. (Use an air filter whose dust collecting efficiency is at least 50% in a gravimetric technique). It can not be equipped with air filter (accessory) when connecting duct to suction side.

6

5 Centre of gravity

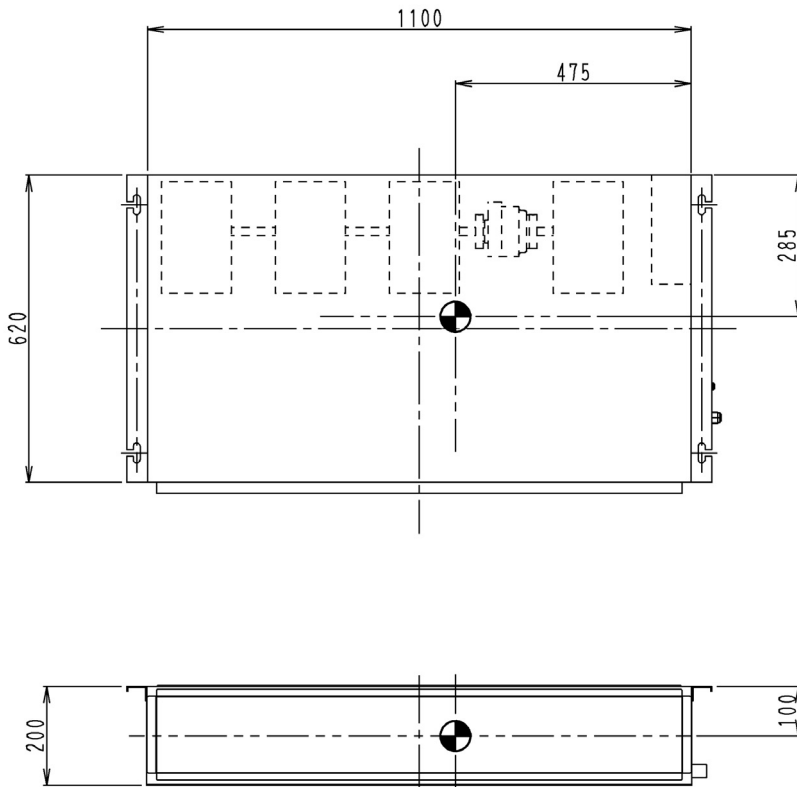
5 - 1 Centre of Gravity

FDXS50C



4D046081K

FDXS60C

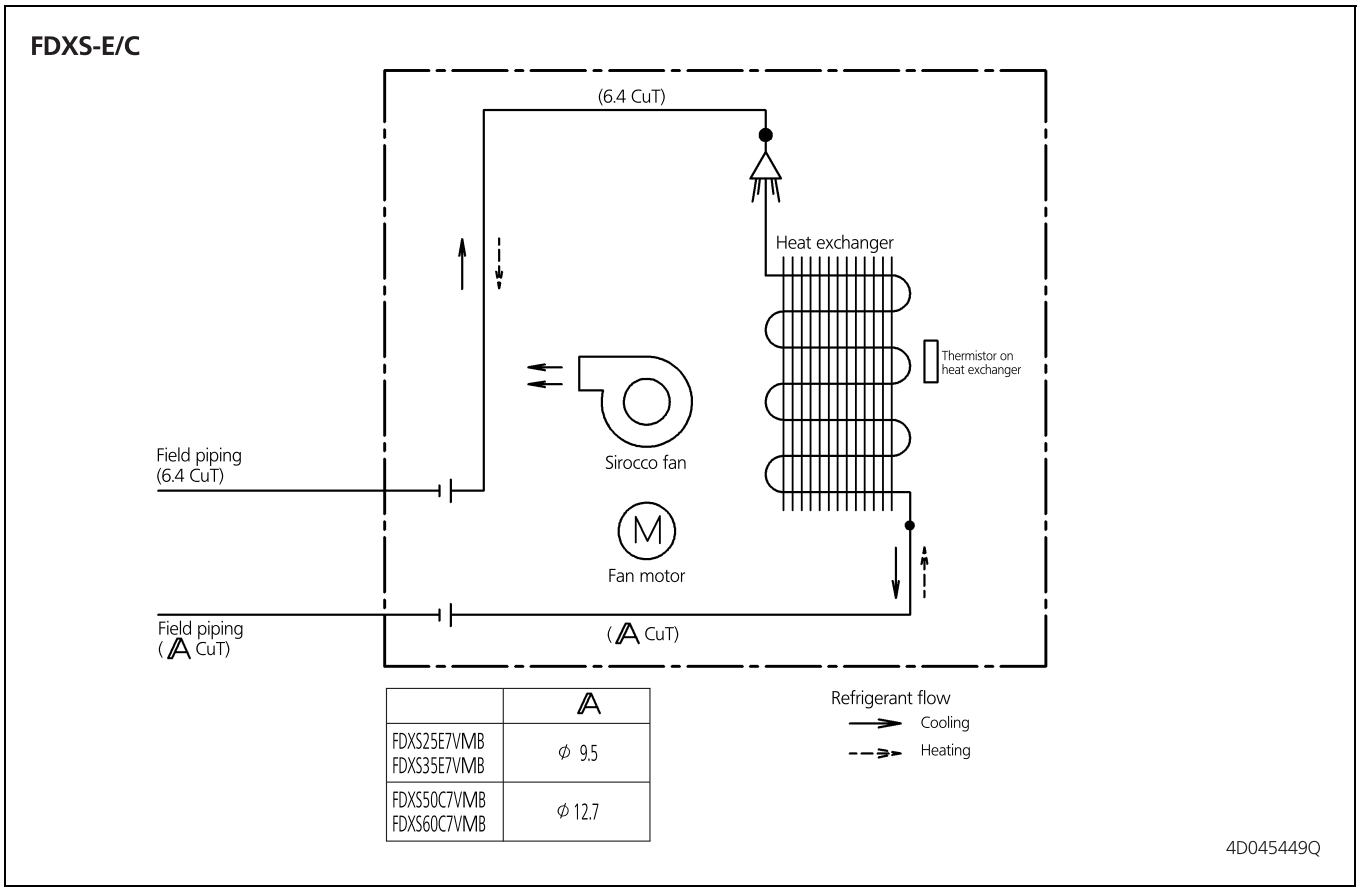


4D046082F

6 Piping diagrams

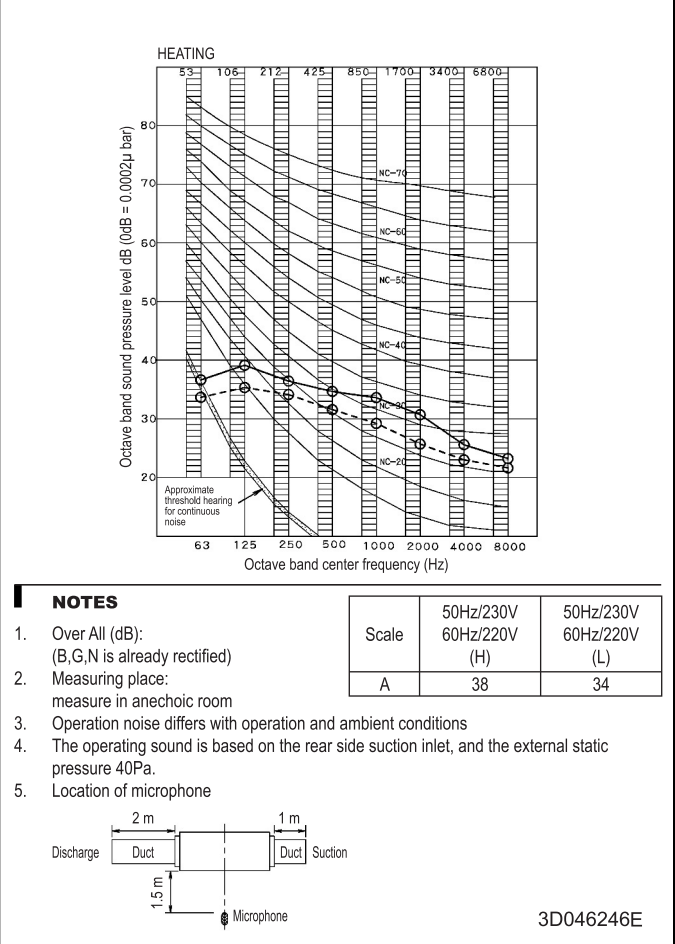
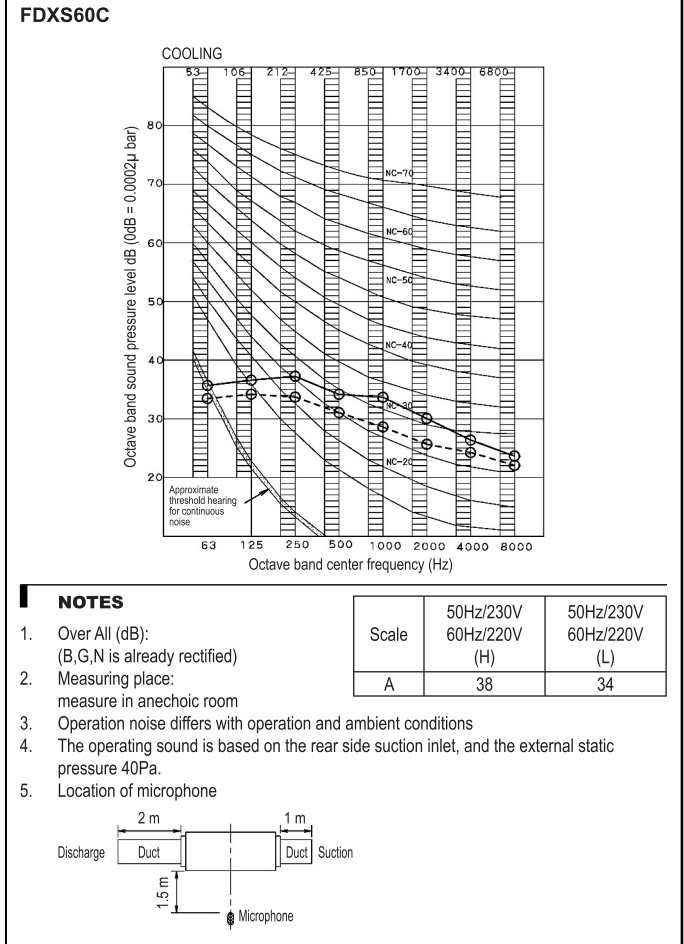
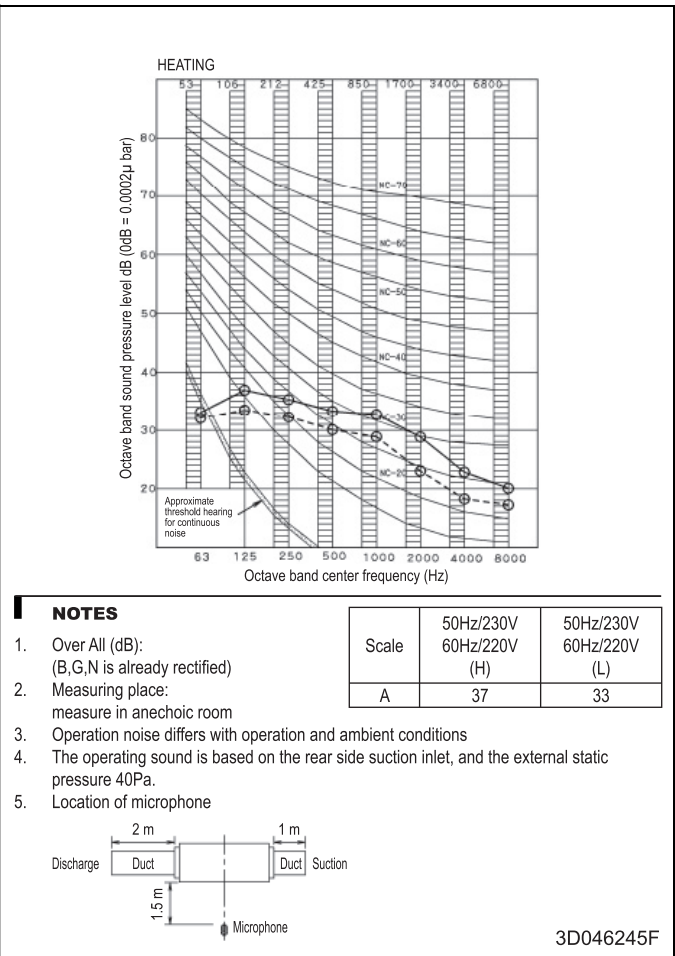
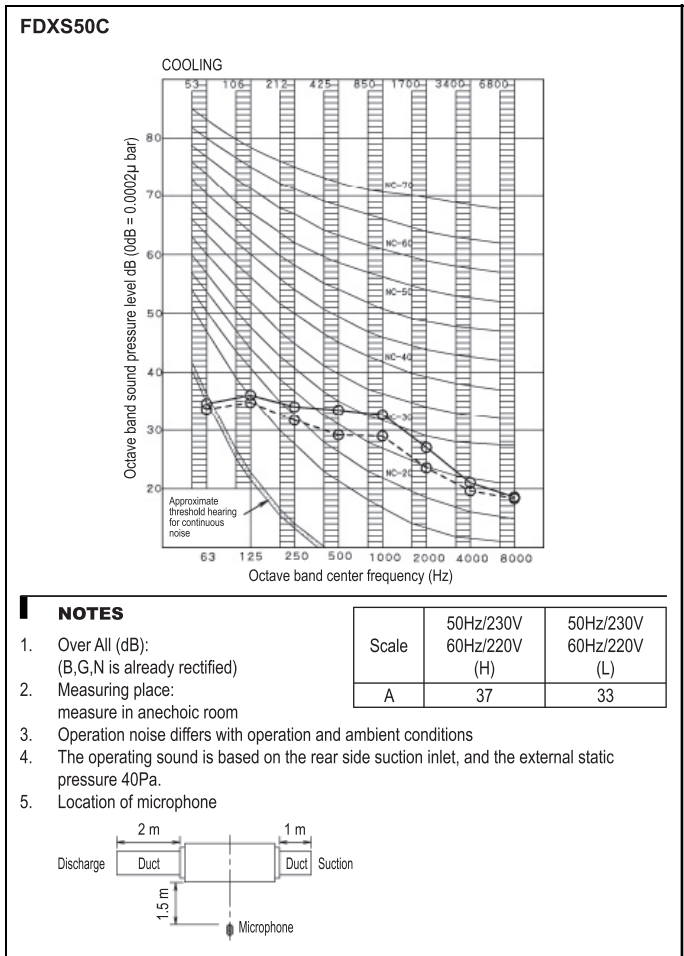
6 - 1 Piping Diagrams

6



7 Sound data

7 - 1 Sound Pressure Spectrum

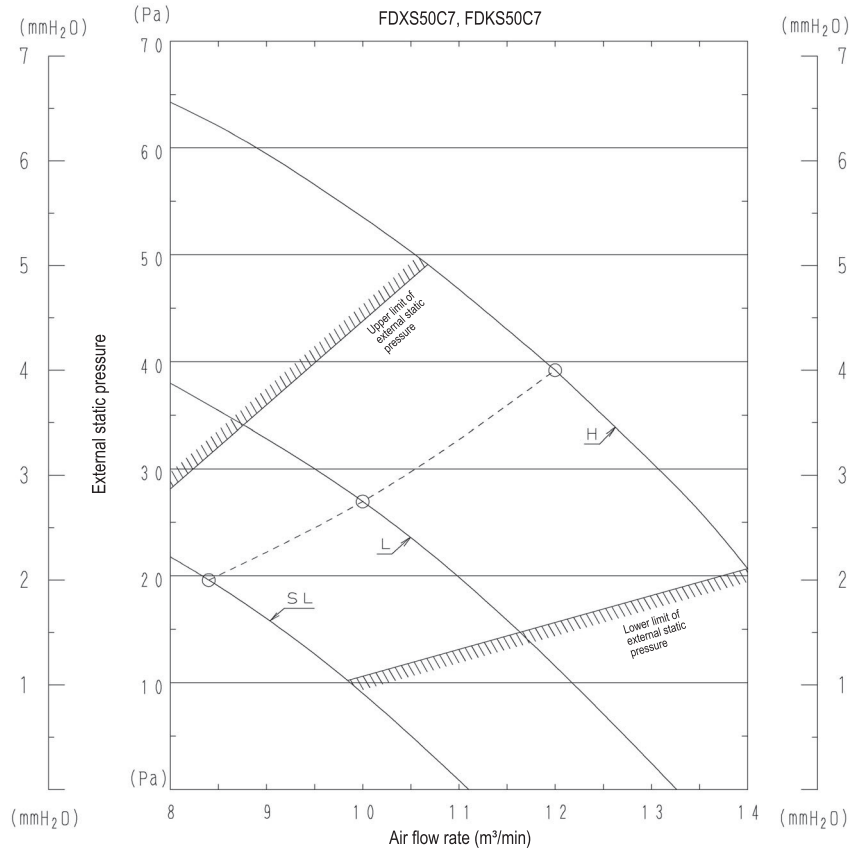


8 Fan characteristics

8 - 1 Fan Characteristics

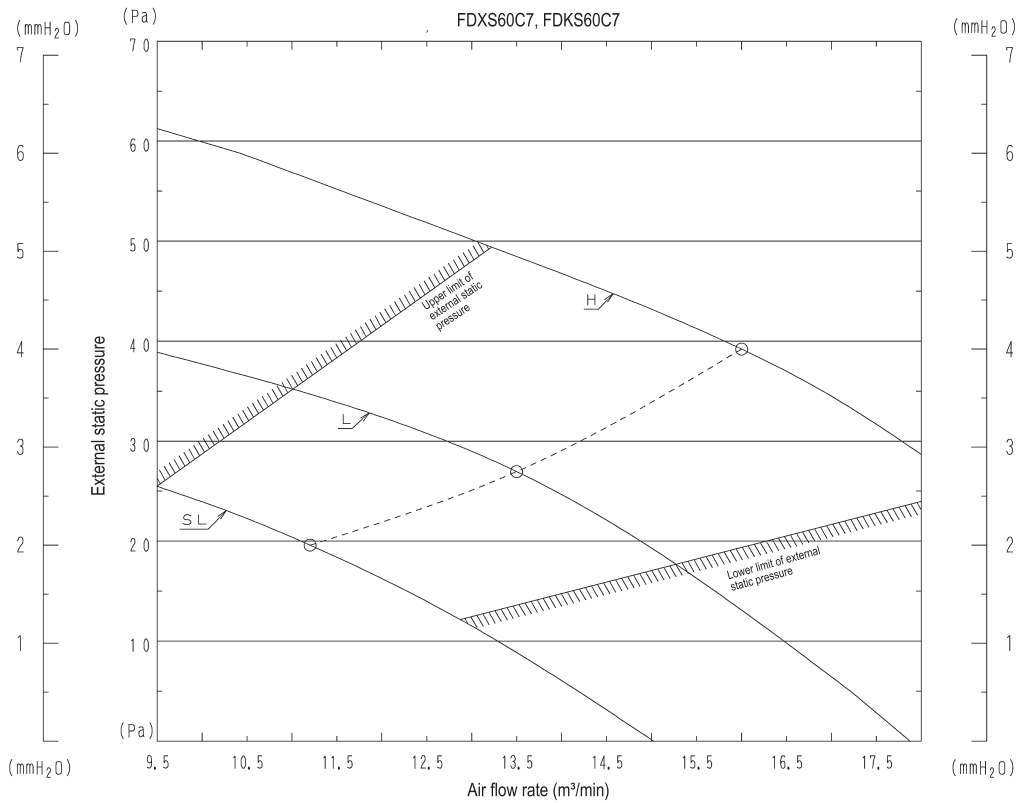
8

FDXS50C



3D045762F

FDXS60C



3D045763E

In all of us,
a green heart

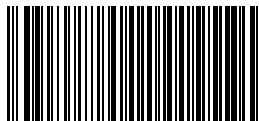


Daikin's unique position as a manufacturer of air conditioning equipment, compressors and refrigerants has led to its close involvement in environmental issues. For several years Daikin has had the intention to become a leader in the provision of products that have limited impact on the environment. This challenge demands the eco design and development of a wide range of products and an energy management system, resulting in energy conservation and a reduction of waste.



Daikin Europe N.V. participates in the Eurovent Certification programme for Air conditioners (AC), Liquid Chilling Packages (LCP), Air handling units (AHU) and Fan coil units (FCU). Check ongoing validity of certificate online: www.eurovent-certification.com or using: www.certiflash.com

The present leaflet is drawn up by way of information only and does not constitute an offer binding upon Daikin Europe N.V. Daikin Europe N.V. has compiled the content of this leaflet to the best of its knowledge. No express or implied warranty is given for the completeness, accuracy, reliability or fitness for particular purpose of its content and the products and services presented therein. Specifications are subject to change without prior notice. Daikin Europe N.V. explicitly rejects any liability for any direct or indirect damage, in the broadest sense, arising from or related to the use and/or interpretation of this leaflet. All content is copyrighted by Daikin Europe N.V.



EEDEN12-100

Daikin products are distributed by: