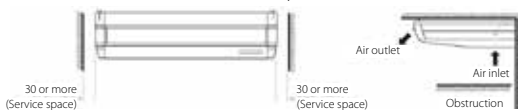
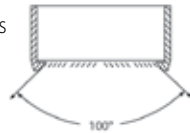


Ceiling suspended unit

For wide rooms with no false ceilings nor free floor space

Combination with Seasonal Classic ensures good value for money for all types of commercial applications

- › Ideal for comfortable air flow in wide rooms thanks to Coanda effect: up to 100° discharge angle
- › Even rooms with ceilings up to 3.8m can be heated up or cooled down very easily without capacity loss
- › Can easily be mounted in corners and narrow spaces, as it only needs 30mm lateral service space



- › Reduced energy consumption thanks to specially developed DC fan motor and drain pump
- › Stylish unit blends easily with any interior. The flaps close entirely when the unit is not operating and there are no air intake grilles visible
- › No optional adapter needed for DIII-connection, link your unit into the wider building management system.
- › Drain pump kit available as accessory
- › Fresh air intake integrated in the same system thus reducing installation cost as no additional ventilation device is required

Efficiency data		FHQ + RZQSG	71C + 71L3V1	100C + 100L9V1	125C + 125L9V1	140C + 140L9V1	100C + 100L8Y1	125C + 125L8Y1	140C + 140LY1	
Cooling capacity	Nom.	kW	6.8	9.5	12.0	13.4	9.5	12.0	13.4	
Heating capacity	Nom.	kW	7.5	10.8	13.5	15.5	10.8	13.5	15.5	
Power input	Cooling	Nom.	1.97	2.96	4.15	4.45	2.96	4.15	4.45	
	Heating	Nom.	1.88	2.99	3.73	4.54	2.99	3.73	4.54	
Seasonal efficiency (according to EN14825)	Cooling	Energy label	A+		-		A+		-	
		Pdesign	kW	6.80	9.50	12.00	-	9.5	12	-
		SEER		5.61		-		5.61		-
	Heating (Average climate)	Annual energy consumption	kWh	424	593	749	-	593	749	-
		Energy label		A		A+		A		A+
		Pdesign	kW	7.60		-		7.6		-
Nominal efficiency	SCOP		3.90	3.91	4.01	-	3.91	4.01	-	
	Annual energy consumption	kWh	2,727	2,722	2,654	-	2,722	2,654	-	
Nominal efficiency	EER		3.46	3.21	2.89	3.01	3.21	2.89	3.01	
	COP		4.00	3.61	3.62	3.41	3.61	3.62	3.41	
	Annual energy consumption	kWh	985	1,480	2,075	-	1,480	2,075	2,225	
	Energy label	Cooling/Heating	A/A		C/A		A/A		C/A	

Indoor unit		FHQ	71C	100C	125C	140C	100C	125C	140C	
Dimensions	Unit	HeightxWidthxDepth	mm	235x1,270x690		235x1,590x690				
Weight	Unit	kg	32	38						
Air filter	Type	Resin net with mold resistance								
Fan - Air flow rate	Cooling	High/Nom./Low	m³/min	20.5/17/14	28/24/20	31/27/23	34/29/24	28/24/20	31/27/23	34/29/24
	Heating	High/Nom./Low	m³/min	20.5/17/14	28/24/20	31/27/23	34/29/24	28/24/20	31/27/23	34/29/24
Sound power level	Cooling		dBA	55	60	62	64	60	62	64
	Heating		dBA	55	60	62	64	60	62	64
Sound pressure level	Cooling	High/Nom./Low	dBA	38/36/34	42/38/34	44/41/37	46/42/38	42/38/34	44/41/37	46/42/38
	Heating	High/Nom./Low	dBA	38/36/34	42/38/34	44/41/37	46/42/38	42/38/34	44/41/37	46/42/38
Control systems	Infrared remote control	BRC7G53								
	Wired remote control	BRC1D52 / BRC1E52A/B								
Power supply	Phase / Frequency / Voltage	Hz / V	1 ~ / 50/60 / 220-240/220							

Outdoor unit		RZQSG	71L3V1	100L9V1	125L9V1	140L9V1	100L8Y1	125L8Y1	140LY1	
Dimensions	Unit	HeightxWidthxDepth	mm	770x900x320	990x940x320		1,430x940x320	990x940x320		
Weight	Unit	kg	67	72	74	95	82		101	
Sound power level	Cooling		dBA	65	70		69	70	69	
Sound pressure level	Cooling	Nom./Silent operation	dBA	49/47	53/-	54/-	53/-	54/-	53/-	
	Heating	Nom.	dBA	51	57	58	54	57	58	
	Night quiet mode	Level 1	dBA	-	49					
Operation range	Cooling	Ambient	Min.-Max.	-15~-46						
	Heating	Ambient	Min.-Max.	-15~-15.5						
Refrigerant	Type/Charge	kg-TCO²Eq/GWP	R-410A/2.75/5.7/2,087.5	R-410A/2.9/6.1/2,087.5		R-410A/4.0/8.4/2,087.5	R-410A/2.9/6.1/2,087.5		R-410A/4.0/8.4/2,087.5	
Piping connections	Liquid	OD	mm	9.52						
	Gas	OD	mm	15.9						
	Piping length	OU - IU	Max.	m	50					
		System	Equivalent	m	70					
			Chargeless	m	30					
Additional refrigerant charge		kg/m	See installation manual							
Level difference	IU - OU	Max.	m	15	30.0					
Power supply	Phase / Frequency / Voltage	Hz / V	1 ~ / 50 / 220-240						3N ~ / 50 / 380-415	
Current - 50Hz	Maximum fuse amps (MFA)	A	20	32		16				20

(1) EER/COP according to Eurovent 2012, for use outside EU only (2) MFA is used to select the circuit breaker and the ground fault circuit interrupter (earth leakage circuit breaker) For more detailed information on each combination, please refer to the electrical data drawing.

Ceiling suspended unit

For wide rooms with no false ceilings nor free floor space

For combination with Seasonal Smart ensures best in class quality, highest efficiency and performance



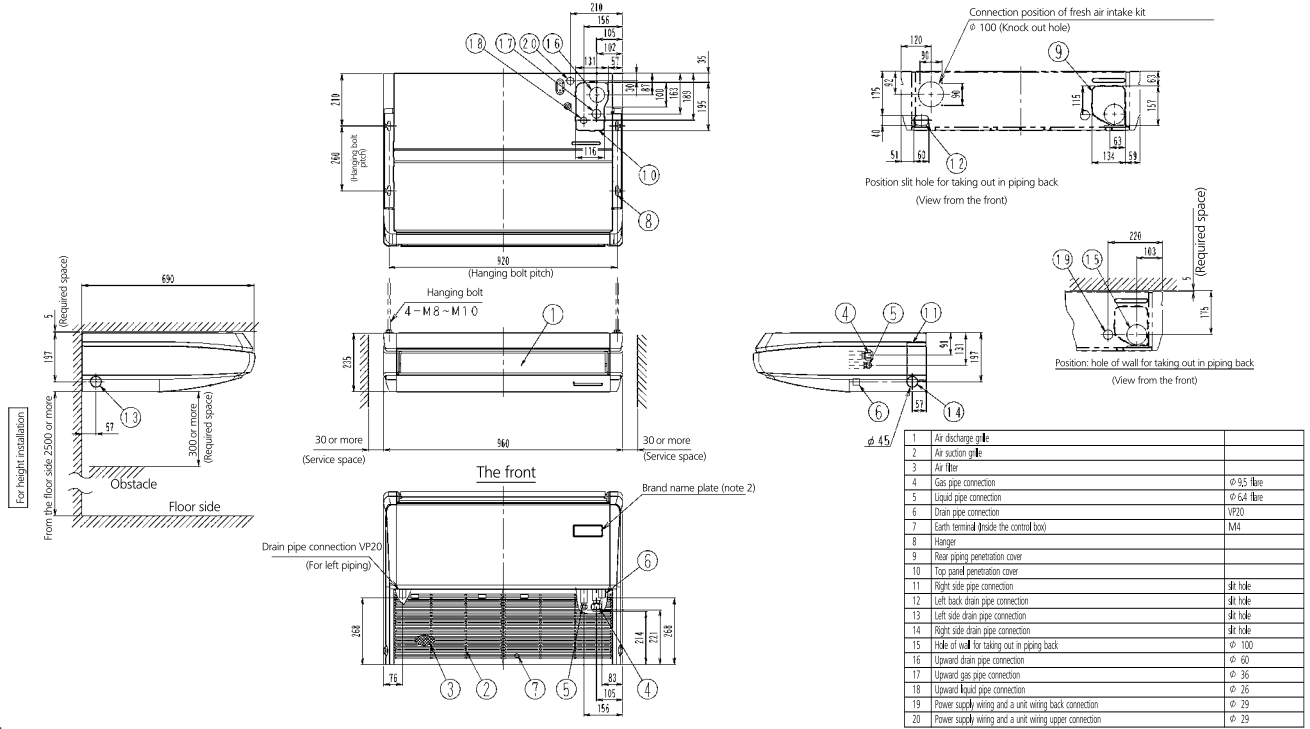
Efficiency data			FHQ + RZQG	71C + 71L9V1	100C + 100L9V1	125C + 125L9V1	140C + 140L9V1	71C + 71L8Y1	100C + 100L8Y1	125C + 125L8Y1	140C + 140L4Y1	
Cooling capacity	Nom.		kW	6.8	9.5	12.0	13.4	6.8	9.5	12.0	13.4	
Heating capacity	Nom.		kW	7.5	10.8	13.5	15.5	7.5	10.8	13.5	15.5	
Power input	Cooling	Nom.	kW	1.78	2.49	3.58	4.05	1.78	2.49	3.58	4.05	
	Heating	Nom.	kW	1.82	2.60	3.48	4.27	1.82	2.60	3.48	4.27	
Seasonal efficiency (according to EN14825)	Cooling	Energy label		A++			A+			A++		
		Pdesign	kW	6.80	9.50	12.00	-	6.8	9.5	12	-	
		SEER		6.95	6.11	6.01	-	6.95	6.11	6.01	-	
		Annual energy consumption	kWh	343	545	699	-	343	545	699	-	
	Heating (Average climate)	Energy label		A+			A++			A+		
		Pdesign	kW	7.60	11.30	14.13	-	7.6	11.3	14.13	-	
		SCOP		4.32	4.61	4.23	-	4.32	4.61	4.23	-	
		Annual energy consumption	kWh	2,463	3,432	4,677	-	2,463	3,432	4,677	-	
Nominal efficiency	EER			3.82	3.81	3.35	3.31	3.82	3.81	3.35	3.31	
	COP			4.13	4.15	3.89	3.63	4.13	4.15	3.89	3.63	
	Annual energy consumption	kWh		890	1,245	1,790	-	890	1,245	1,790	-	
	Energy label	Cooling/Heating		A/A			-			A/A		

Indoor unit			FHQ	71C	100C	125C	140C	71C	100C	125C	140C	
Dimensions	Unit	HeightxWidthxDepth	mm	235x1,270x690			235x1,590x690			235x1,270x690		
Weight	Unit		kg	32	38			32	38			
Air filter	Type			Resin net with mold resistance								
Fan - Air flow rate	Cooling	High/Nom./Low	m ³ /min	20.5/17/14	28/24/20	31/27/23	34/29/24	20.5/17/14	28/24/20	31/27/23	34/29/24	
	Heating	High/Nom./Low	m ³ /min	20.5/17/14	28/24/20	31/27/23	34/29/24	20.5/17/14	28/24/20	31/27/23	34/29/24	
Sound power level	Cooling		dB(A)	55	60	62	64	55	60	62	64	
	Heating		dB(A)	55	60	62	64	55	60	62	64	
Sound pressure level	Cooling	High/Nom./Low	dB(A)	38/36/34	42/38/34	44/41/37	46/42/38	38/36/34	42/38/34	44/41/37	46/42/38	
	Heating	High/Nom./Low	dB(A)	38/36/34	42/38/34	44/41/37	46/42/38	38/36/34	42/38/34	44/41/37	46/42/38	
Control systems	Infrared remote control			BRC7G53								
	Wired remote control			BRC1D52 / BRC1E52A/B								
Power supply	Phase / Frequency / Voltage	Hz / V		1~ / 50/60 / 220-240/220								

Outdoor unit			RZQG	71L9V1	100L9V1	125L9V1	140L9V1	71L8Y1	100L8Y1	125L8Y1	140L4Y1	
Dimensions	Unit	HeightxWidthxDepth	mm	990x940x320			1,430x940x320			990x940x320		
Weight	Unit		kg	69	95			80	101			
Sound power level	Cooling		dB(A)	64	66	67	69	64	66	67	69	
Sound pressure level	Cooling	Nom.	dB(A)	48	50	51	52	48	50	51	52	
	Heating	Nom.	dB(A)	50	52	53		50	52	53		
Night quiet mode	Level 1		dB(A)	43	45			43	45			
Operation range	Cooling	Ambient	Min.-Max.	-15~-50								
	Heating	Ambient	Min.-Max.	-20~-15.5								
Refrigerant	Type/Charge	kg-TCO ² Eq/GWP		R-410A/2.9/6.1/2,087.5			R-410A/4.0/8.4/2,087.5			R-410A/2.9/6.1/2,087.5		
Piping connections	Liquid	OD	mm	9.52								
	Gas	OD	mm	15.9								
Piping length	OU - IU	Max.	m	50	75			50	75			
		Equivalent	m	70	90			70	90			
	Chargeless		m	30								
		Additional refrigerant charge	kg/m	See installation manual								
Level difference	IU - OU	Max.	m	30.0								
Power supply	Phase / Frequency / Voltage	Hz / V		1~ / 50 / 220-240				3N~ / 50 / 380-415				
Current - 50Hz	Maximum fuse amps (MFA)	A	20	32			20	32				

(1) EER/COP according to Eurovent 2012, for use outside EU only (2) MFA is used to select the circuit breaker and the ground fault circuit interrupter (earth leakage circuit breaker). For more detailed information on each combination, please refer to the electrical data drawing.

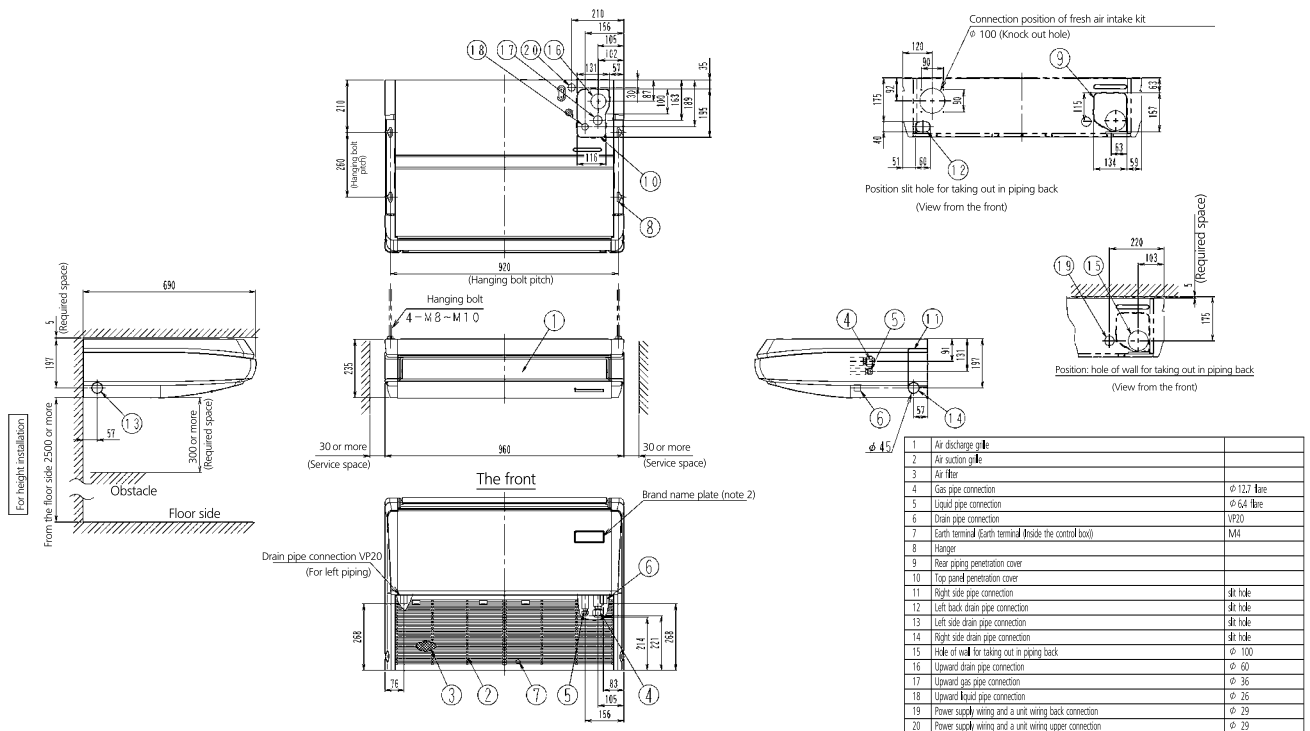
FHQ35C



- Note:
1. Location of unit's name plate: bottom of fan housing inside the suction grille.
 2. In case of using infrared remote controller, this position will be a signal receiver. Refer to the drawing of infrared remote controller in detail.
 3. Please do not place the thing been damp and troubled under an indoor unit. When the case where humidity is 80% or more, and the drain outlet are choked up and the air filter are dirty, dew may fall.

3D080028

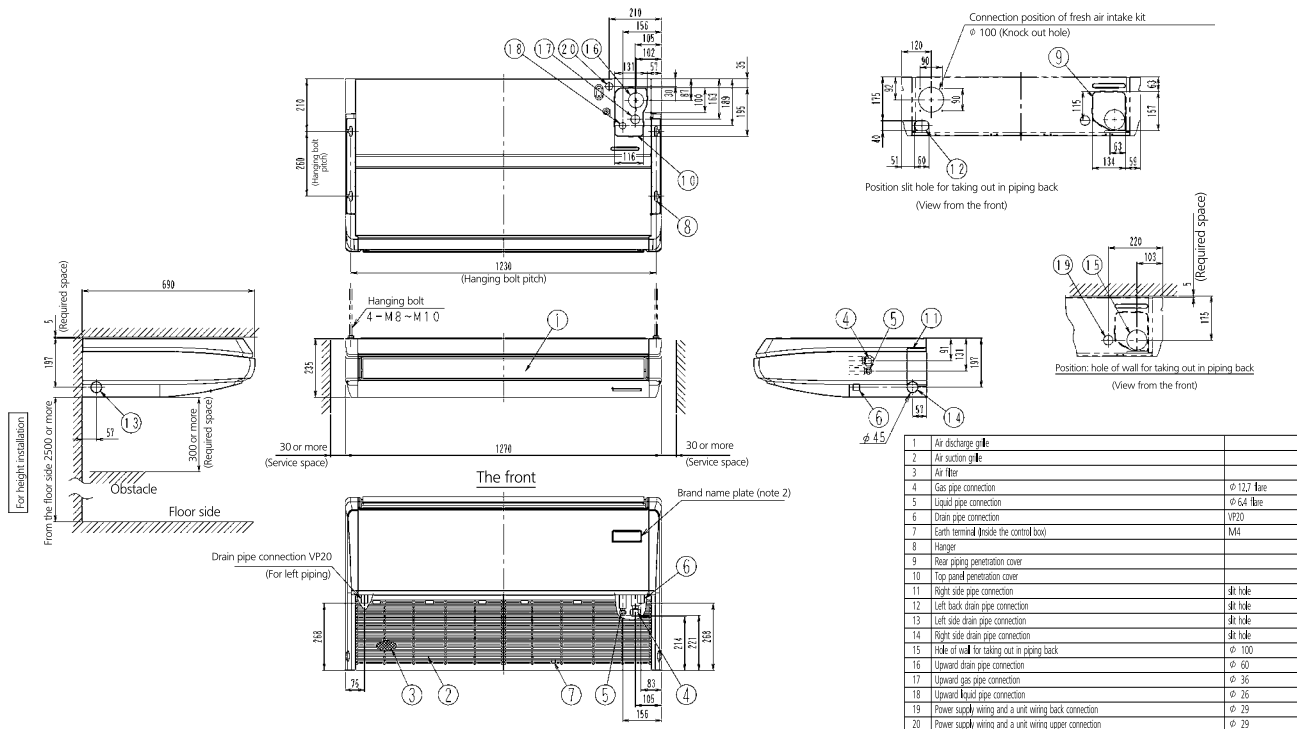
FHQ50C



- Note:
1. Location of unit's name plate: bottom of fan housing inside the suction grille.
 2. In case of using infrared remote controller, this position will be a signal receiver. Refer to the drawing of infrared remote controller in detail.
 3. Please do not place the thing been damp and troubled under an indoor unit. When the case where humidity is 80% or more, and the drain outlet are choked up and the air filter are dirty, dew may fall.

3D080029

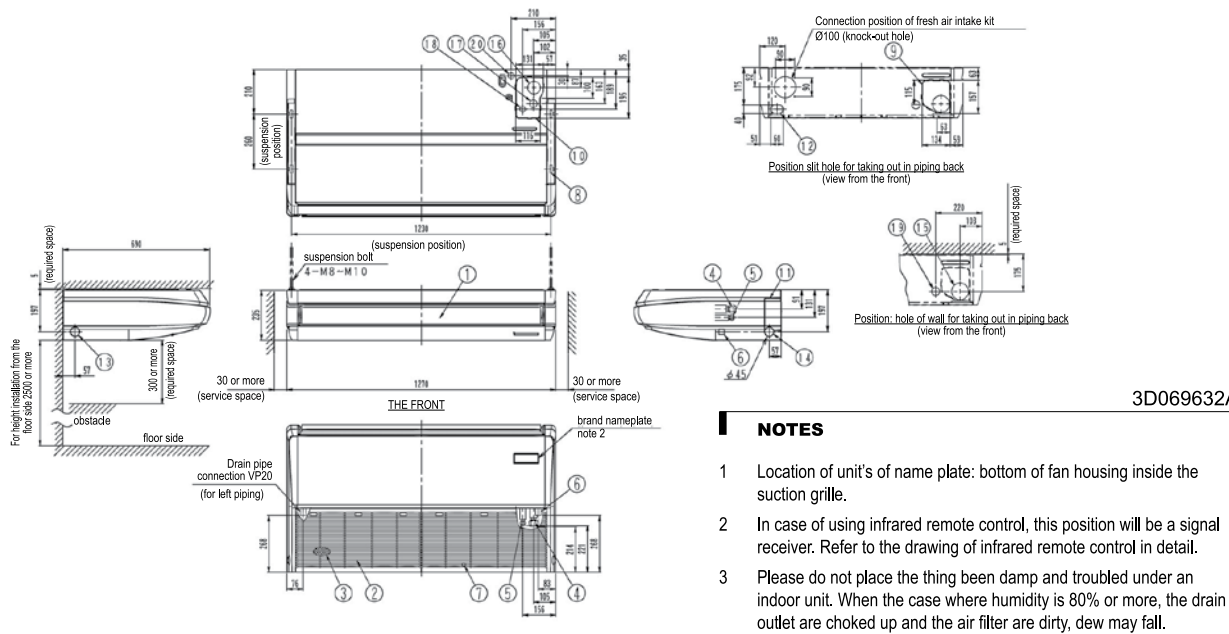
FHQ60C



- Note:
1. Location of unit's name plate: bottom of fan housing inside the suction grille.
 2. In case of using infrared remote controller, this position will be a signal receiver. Refer to the drawing of infrared remote controller in detail.
 3. Please do not place the thing been damp and troubled under an indoor unit. When the case where humidity is 80% or more, and the drain outlet are choked up and the air filter are dirty, dew may fall.

3D080119

FHQ71C



3D069632A

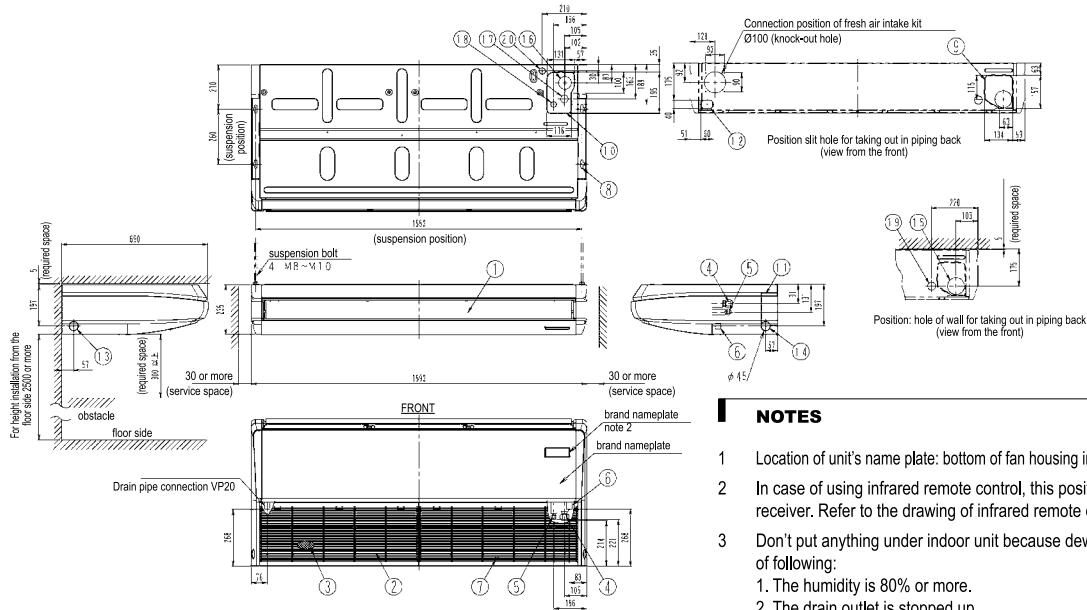
NOTES

1. Location of unit's name plate: bottom of fan housing inside the suction grille.
2. In case of using infrared remote control, this position will be a signal receiver. Refer to the drawing of infrared remote control in detail.
3. Please do not place the thing been damp and troubled under an indoor unit. When the case where humidity is 80% or more, the drain outlet are choked up and the air filter are dirty, dew may fall.

Nr	Name	Description
1	Air discharge grille	
2	Air suction grille	
3	Air filter	
4	Gas pipe connection	Ø15.9 flare
5	Liquid pipe connection	Ø9.5 flare
6	Drain pipe connection	VP20
7	Earth terminal (inside electric components box)	M4
8	Hanger bracket	
9	Backward piping and wiring connection opening lid	
10	Upward piping and wiring connection opening lid	

11	Right side pipe connection	slit hole
12	Left back drain pipe connection	slit hole
13	Left side drain pipe connection	slit hole
14	Right side drain pipe connection	slit hole
15	Hole of wall for taking out in piping back	Ø100
16	Upward drain pipe connection	Ø60
17	Upward gas pipe connection	Ø36
18	Upward liquid pipe connection	Ø26
19	Power source wiring and a unit wiring back connection	Ø29
20	Power source wiring and a unit wiring upper connection	Ø29

FHQ100-140C



3D069633D

NOTES

- 1 Location of unit's name plate: bottom of fan housing inside the suction grille.
- 2 In case of using infrared remote control, this position will be a signal receiver. Refer to the drawing of infrared remote control in detail.
- 3 Don't put anything under indoor unit because dew may fall by reason of following:
 1. The humidity is 80% or more.
 2. The drain outlet is stopped up.
 3. The air filter is dirty.

Nr	Name	Description
1	Air discharge grille	
2	Air suction grille	
3	Air filter	
4	Gas pipe connection	Ø15.9 flare
5	Liquid pipe connection	Ø9.5 flare
6	Drain pipe connection	VP20
7	Earth terminal (inside electric components box)	M4
8	Hanger bracket	
9	Backward piping and wiring connection opening lid	
10	Upward piping and wiring connection opening lid	

11	Right side pipe connection	slit hole
12	Left back drain pipe connection	slit hole
13	Left side drain pipe connection	slit hole
14	Right side drain pipe connection	slit hole
15	Hole of wall for taking out in piping back	Ø100
16	Upward drain pipe connection	Ø60
17	Upward gas pipe connection	Ø36
18	Upward liquid pipe connection	Ø26
19	Power source wiring and a unit wiring back connection	Ø29
20	Power source wiring and a unit wiring upper connection	Ø29

Ceiling suspended unit

For wide rooms with no false ceilings nor free floor space

- › Ideal solution for commercial spaces with no or narrow false ceilings
- › Exclusively offered for pair applications
- › Can easily be installed in both new and refurbishment projects
- › Air filter removes airborne dust particles to ensure a steady supply of clean air
- › Decrease of temperature variation by automatic fan speed selection or freely selectable 3-step fan speed.
- › Easy installation and maintenance



Indoor units

Efficiency data			AHQ + AZQS	71C + 71BV1	100C + 100B8V1	125C + 125B8V1	140C + 140B8V1	100C + 100BY1	125C + 125BY1	140C + 140BY1
Cooling capacity	Nom.	kW	6.8	9.5	12.1	13.0	9.5	12.1	13.0	
Heating capacity	Nom.	kW	7.5	10.8	13.5	15.5	10.8	13.5	15.5	
Power input	Cooling	Nom.	2.24	3.62	4.60	4.32	3.62	4.60	4.32	
	Heating	Nom.	2.46	3.17	3.74	4.55	3.17	3.74	4.55	
Seasonal efficiency (according to EN14825)	Cooling	Energy label	B		-		B		-	
		Pdesign	6.80	9.50	-		9.50	-		-
		SEER	4.65	4.60	-		4.60	-		-
	Heating (Average climate)	Annual energy consumption	kWh	511.85	723	-		723	-	
		Energy label	A		-		A		-	
		Pdesign	6.33	7.60	-		7.60	-		-
Nominal efficiency	EER	SCOP	3.80		-		3.80	-		-
		Annual energy consumption	kWh	2,332.26	2,800	-		2,800	-	
	COP		3.03	2.62	2.63	3.01	2.62	2.63	3.01	
Annual energy consumption	EER		3.05	3.41	3.61	3.41	3.61	3.41		
		COP		3.05	3.41	3.61	3.41	3.61	3.41	
	Energy label	Cooling/Heating	B/D	D/B	D/A	-	D/B	D/A	-	

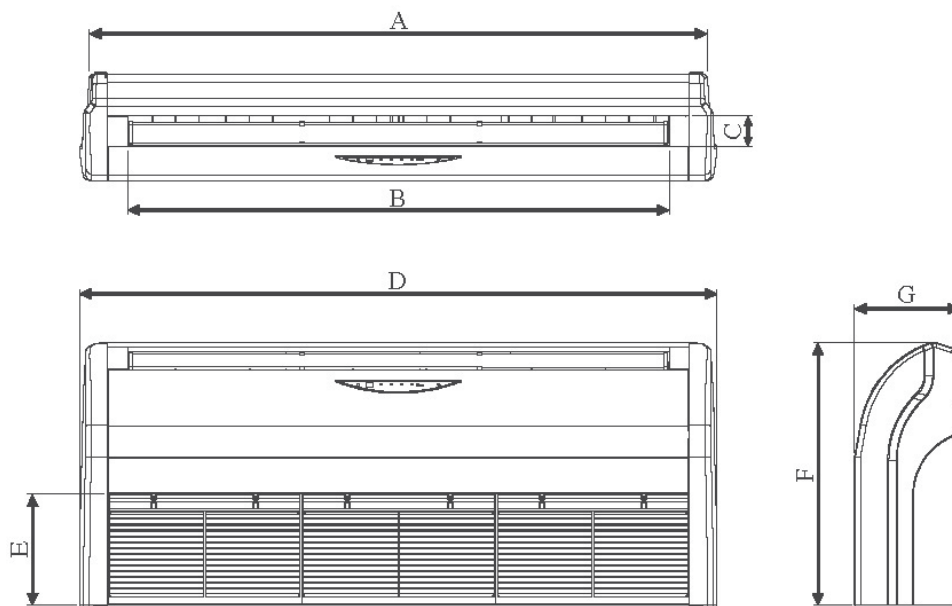
Indoor unit			AHQ	71C	100C	125C	140C	100C	125C	140C
Dimensions	Unit	HeightxWidthxDepth	mm	260x1,320x634	260x1,538x634	260x1,786x634	285x1,902x680	260x1,538x634	260x1,786x634	285x1,902x680
Weight	Unit		kg	38	45	54	70	45	54	70
Air filter	Type		Removable / washable							
Fan - Air flow rate	Cooling	High/Nom./Low	m³/min	23.8/21.3/18.9	31.1/27.8/24.8	34.4/30.6/27.2	43.9/39.1/28.3	31.1/27.8/24.8	34.4/30.6/27.2	43.9/39.1/28.3
	Heating	High/Nom./Low	m³/min	23.8/21.3/18.9	31.1/27.8/24.8	34.4/30.6/27.2	43.9/39.1/28.3	31.1/27.8/24.8	34.4/30.6/27.2	43.9/39.1/28.3
Sound power level	Cooling		dBA	59	64	69	70	64	69	70
	Heating		dBA	62	64	69	70	64	69	70
Sound pressure level	Cooling	High/Nom./Low	dBA	49/48/46	52/47/46	52/50/49	56/53/46	52/47/46	52/50/49	56/53/46
	Heating	High/Nom./Low	dBA	49/48/46	52/47/46	52/50/49	56/53/46	52/47/46	52/50/49	56/53/46
Control systems	Infrared remote control		ARCWLA							
	Wired remote control		ARCWB							
Power supply	Phase / Frequency / Voltage	Hz / V	1~ / 50 / 220-240							

Outdoor unit			AZQS	71BV1	100B8V1	125B8V1	140B8V1	100BY1	125BY1	140BY1	
Dimensions	Unit	HeightxWidthxDepth	mm	770x900x320	990x940x320		1,430x940x320	990x940x320		1,430x940x320	
Weight	Unit		kg	67	72.8	74.3	94.9	82		101	
Sound power level	Cooling		dBA	64	70	71	70	71		70	
Sound pressure level	Cooling	Nom.	dBA	48	53	54	53	54		53	
	Heating	Nom.	dBA	50	57	58	54	57		54	
Operation range	Night quiet mode	Level 1	dBA	43	49						
	Cooling	Ambient	Min.-Max.	-5~-46							
Refrigerant	Heating	Ambient	Min.-Max.	-15~-15.5							
	Type/Charge	kg-TCO²Eq/GWP		R-410A/2.75/5.7/2,087.5	R-410A/2.9/6.1/2,087.5	R-410A/4.0/8.4/2,087.5	R-410A/2.9/6.1/2,087.5	R-410A/4.0/8.4/2,087.5			
Piping connections	Liquid	OD	mm	9.52							
	Gas	OD	mm	15.9							
	Piping length	OU - IU	Max.	m	50						
		System	Equivalent	m	70						
		Chargeless		m	30						
Additional refrigerant charge		kg/m	See installation manual								
Level difference	IU - OU	Max.	m	30.0							
Power supply	Phase / Frequency / Voltage	Hz / V	1~ / 50 / 220-240						3N~ / 50 / 380-415		
Current - 50Hz	Maximum fuse amps (MFA)	A	20	32				16	20		

(1) EER/COP according to Eurovent 2012, for use outside EU only (2) MFA is used to select the circuit breaker and the ground fault circuit interrupter (earth leakage circuit breaker). For more detailed information on each combination, please refer to the electrical data drawing.

AHQ71-125C

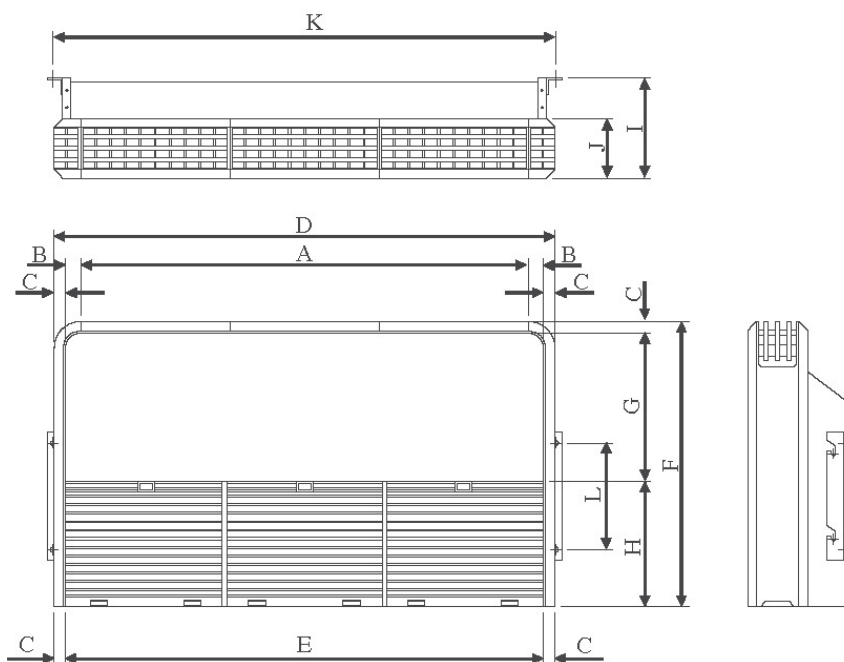
All dimensions are in mm



Model	Dimension	A	B	C	D	E	F	G
AHQ71C		1272	1088	74	1320	268	635	259
AHQ100C		1490	1308	74	1538	268	635	259
AHQ125C		1738	1556	74	1786	268	635	259

AHQ140C

All dimensions are in mm



Model	Dimension	A	B	C	D	E	F	G	H	I	J	L	L
AHQ140C		1750	40	36	1903	1830	680	352	292	285	140	1880	250