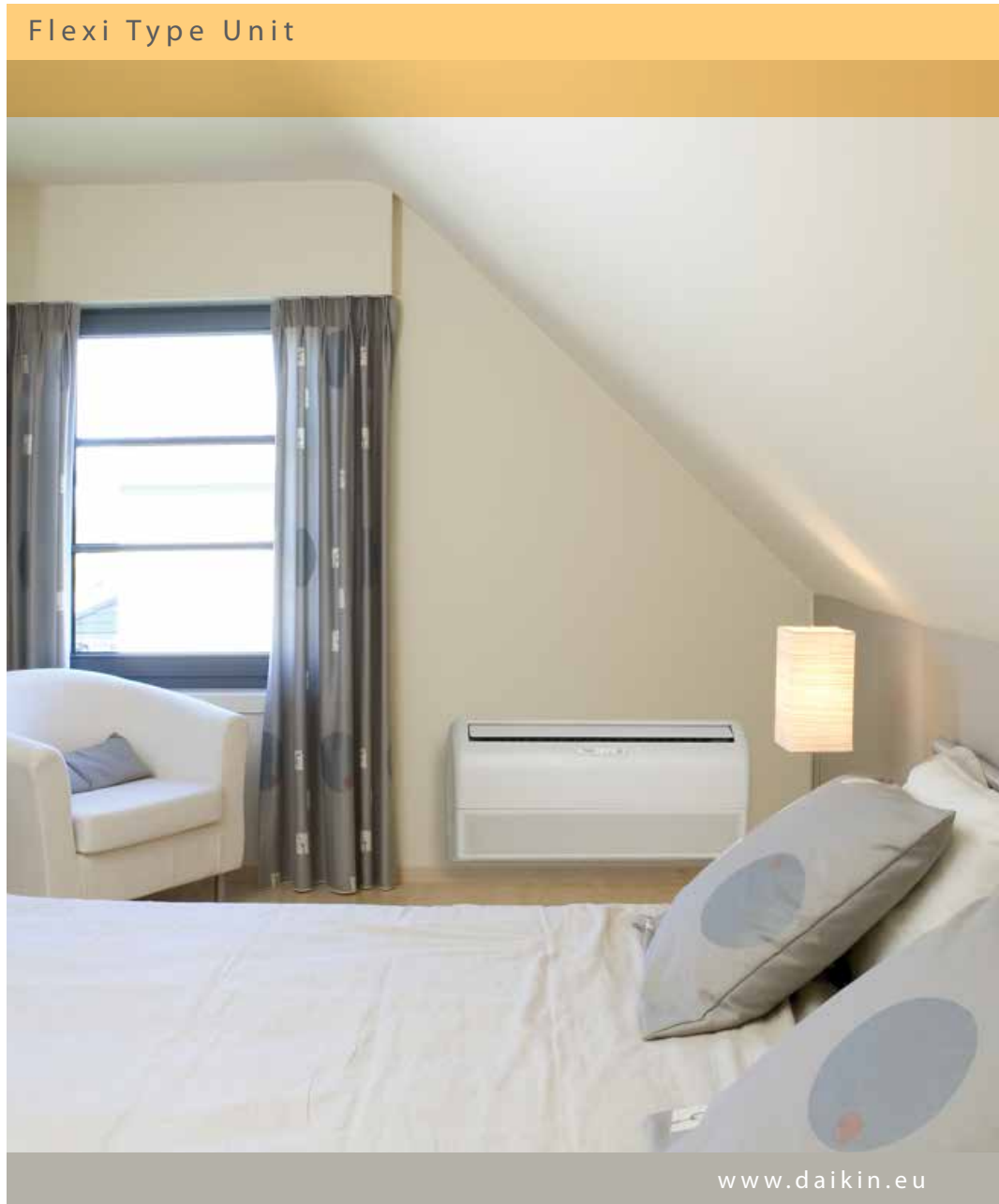


Air Conditioners

Heating & Cooling

Flexi Type Unit

- » **Flexible installation:**
lower wall or
ceiling suspended
- » **Constant comfort**
throughout the room



FLXS-B

INVERTER

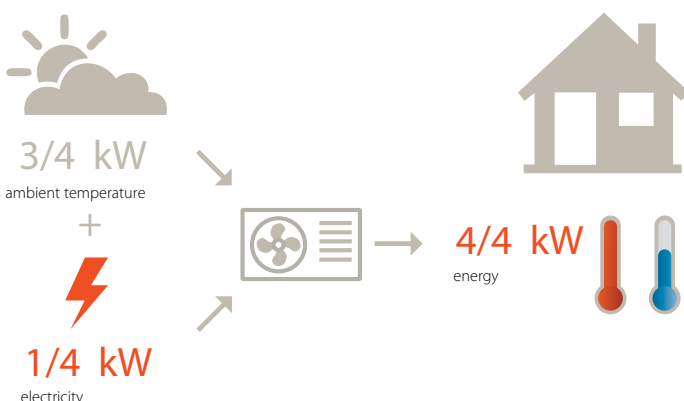


A flexible solution for every home & every room

Thanks to Daikin, a comfortable living climate is available to everyone the whole year through. This flexi type unit offers flexible solutions as either lower floor or ceiling suspended installation is possible. The high-quality heat pumps of Daikin not only offers the possibility of cooling, it can also provide warmth. That way you can adjust the indoor temperature perfectly to your personal needs, both in the summer and winter seasons.

The indoor unit can be used in pair application, combining one indoor unit to one outdoor unit, or multi application, combining up to nine indoor units to one outdoor unit.

Combining highest efficiency and year-round comfort with a heat pump system



Did you know that ...

Air-to-air heat pumps obtain 75% of their output energy from a renewable source: the ambient air, which is both renewable and inexhaustible. Of course, heat pumps also require electricity to run the system, but increasingly this electricity can also be generated from renewable energy sources (solar energy, wind energy, hydropower, biomass). A heat pump's efficiency is measured in SCOP (Seasonal Coefficient Of Performance) for heating and SEER (Seasonal Energy Efficiency Ratio) for cooling.

Comfort for every home and every room, day and night

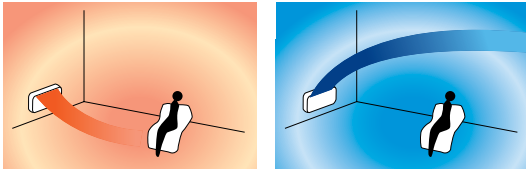
► Flexi type unit with flexible solutions

It's the perfect choice for rooms without false ceilings as it allows either ceiling suspended or lower wall installation. Ceiling suspended installation frees up wall and floor space, while lower wall installation is possible without loss of warm air.

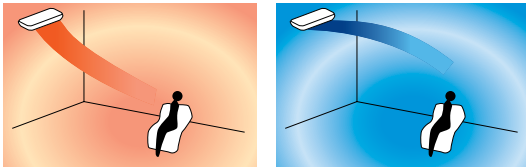
► Combining a comfortable feeling and energy saving solutions

1. Vertical auto swing: this unit allows to select the vertical auto swing ensuring the even distribution of air and a homogeneous temperature in the room.
4. When **powerful operation (2)** is enabled, you can rapidly heat up or cool down the room during 20 minutes. After this, the unit returns to its original setting.

Lower wall installation

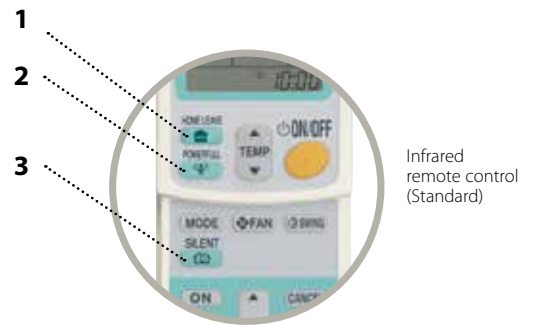


Ceiling suspended installation



2. Saving energy, by preventing overcooling or overheating during night time by using the **night set mode**.
3. When pushing the **home leave button (1)** on the infrared remote control, the indoor temperature drops to a preset temperature level when you're out or sleeping. If you return and push the button again, the indoor temperature returns quickly to its original set temperature.

5. **Whisper quiet operation:** the sound of the indoor units is that low that it can be compared to rustling leaves. (down to 28dBA)
6. By pushing the **outdoor unit silent operation (3)**, the outdoor unit will lower their sound emissions by 3dBA.
7. In **night quiet mode**, the sound level of the multi model outdoor unit is automatically reduced by 3dBA (only for cooling only mode).



Infrared remote control (Standard)



Always in control, no matter where you are. Possibility to control your indoor unit from **any location** via app or internet.

Europe's energy label: raising the bar on energy efficiency

To realise its challenging 20-20-20 environmental goals (20% reduction in CO₂ emissions, 20% share of renewable energy and a 20% reduction in the use of primary energy), Europe is imposing minimum efficiency requirements for energy related projects. These minimum requirements came into effect on 1 January 2013, and were revised. New, higher targets will be set in 2014.

Not only does the Eco-Design Directive systematically raise the minimum requirements with respect to environmental performance, the method used to measure this performance has also been changed to better reflect real-life conditions. The seasonal performance rating provides a much more accurate picture of actual expected energy efficiency over an entire heating or cooling season.

Completing the picture is an energy label for EU which allows consumers to compare and make purchasing decisions based on uniform labelling criteria. The label includes multiple classifications from A+++ to D reflected in colour shadings ranging from dark green (most energy efficient) to red (least efficient). Information on the label includes not only the new seasonal efficiency ratings for heating (SCOP) and cooling (SEER), but also annual energy consumption and sound levels. It will allow end-users to make even better informed choices, since seasonal efficiency reflects air conditioner or heat pump efficiency over an entire season.



SEASONAL EFFICIENCY
Smart use of energy



Heating & Cooling

Indoor unit			FLXS25B	FLXS35B9	FLXS50B	FLXS60B	
Cooling capacity	Min./Nom./Max.	kW	1.2/2.5/3.0	1.2/3.5/3.8	0.9/4.9/5.3	-	
Heating capacity	Min./Nom./Max.	kW	1.2/3.4/4.5	1.4/4.0/5.0	0.9/6.1/7.5	-	
Power input	Cooling	Min./Nom./Max.	0.30/0.65/0.86	0.30/1.13/1.26	0.45/1.72/1.95	-	
	Heating	Min./Nom./Max.	0.29/0.96/1.49	0.29/1.12/1.85	0.31/1.82/3.54	-	
Seasonal efficiency (according to EN14825)	Cooling	Energy label	A	B	A	Only available in multi model application	
		Pdesign	kW	2.50	3.50		4.90
		SEER		5.19	4.87		5.25
		Annual energy consumption	kWh	169	252		326
	Heating (Average climate)	Energy label		A			
		Pdesign	kW	2.50	2.90		4.20
		SCOP			3.80		
Nominal efficiency (cooling at 35°/27° nominal load, heating at 7°/20° nominal load)	EER		3.85	3.10	2.85		
	COP		3.54	3.57	3.35		
Annual energy consumption	Annual energy consumption	kWh	325	565	860		
	Energy label	Cooling/Heating	A/B	B/B	C/C		
Casing	Colour		Almond white				
Dimensions	Unit	HeightxWidthxDepth	490x1,050x200				
Weight	Unit		16		17		
Fan - Air flow rate	Cooling	High/Nom./Low/Silent operation	m ³ /min	7.6/7.6/6.0/5.2	8.6/7.6/6.6/5.6	11.4/11.4/8.5/7.5	
	Heating	High/Nom./Low/Silent operation	m ³ /min	9.2/8.3/7.4/6.6	12.8/10.4/8.0/7.2	12.1/9.8/7.5/6.8	
Sound power level	Cooling		dBA	51	53	60	
	Heating		dBA	51	59	59	
Sound pressure level	Cooling	High/Nom./Low/Silent operation	dBA	37/34/31/28	38/35/32/29	47/43/39/36	
	Heating	High/Nom./Low/Silent operation	dBA	37/34/31/29	46/36/33/30	46/41/35/33	
Piping connections	Liquid	OD	mm	6.35			
	Gas	OD	mm	9.5		12.7	
	Drain	OD	mm	18.0		18	
Power supply	Phase / Frequency / Voltage	Hz / V	1~ / 50 / 220-240				

Outdoor unit			RXS25L	RXS35L	RXS50L
Dimensions	Unit	HeightxWidthxDepth	550x765x285		735x825x300
Weight	Unit		34		47
Fan - Air flow rate	Cooling	High/Super low	m ³ /min	33.5/30.1	36.0/30.1
	Heating	High/Super low	m ³ /min	28.3/25.6	50.9/48.9
Sound power level	Cooling		dBA	59	61
	Heating		dBA	59	61
Sound pressure level	Cooling	High/Low/Silent operation	dBA	46/-/43	48/-/44
	Heating	High/Low/Silent operation	dBA	47/-/44	48/-/45
Operation range	Cooling	Ambient Min.-Max.	°CDB	-10~46	
	Heating	Ambient Min.-Max.	°CWB	-15~18	
Refrigerant	Type/GWP		R-410A/1,975		
Piping connections	Piping length	OU - IU Max.	m	20	30
	Level difference	IU - OU Max.	m	15	20
Power supply	Phase / Frequency / Voltage	Hz / V	1~ / 50 / 220-240		
Current - 50Hz	Maximum fuse amps (MFA)	A	10		20

(1) EER/COP according to Eurovent 2012, for use outside EU only.



Indoor unit
FLXS25,35,50B(9)



Infrared remote control



Outdoor unit
RXS25-35L

Daikin has a worldwide reputation based on 90 years' experience in the successful manufacture of high quality air conditioning equipment for residential, commercial and industrial use and 56 years as a leader in heat pump technology.

The present leaflet is drawn up by way of information only and does not constitute an offer binding upon Daikin Europe N.V. Daikin Europe N.V. has compiled the content of this leaflet to the best of its knowledge. No express or implied warranty is given for the completeness, accuracy, reliability or fitness for particular purpose of its content and the products and services presented therein. Specifications are subject to change without prior notice. Daikin Europe N.V. explicitly rejects any liability for any direct or indirect damage, in the broadest sense, arising from or related to the use and/or interpretation of this leaflet. All content is copyrighted by Daikin Europe N.V.



Daikin Europe N.V. participates in the Eurovent Certification programme for Liquid Chilling Packages (LCP), Fan coil units (FCU) and Air handling units (AHU). Check ongoing validity of certificate online: www.eurovent-certification.com or using: www.certiflash.com

Daikin products are distributed by:

FSC

ECPEN14 -008