



technical data



FTYN-EV1B

Wall Mounted Unit

air conditioning systems

Split Sky Air

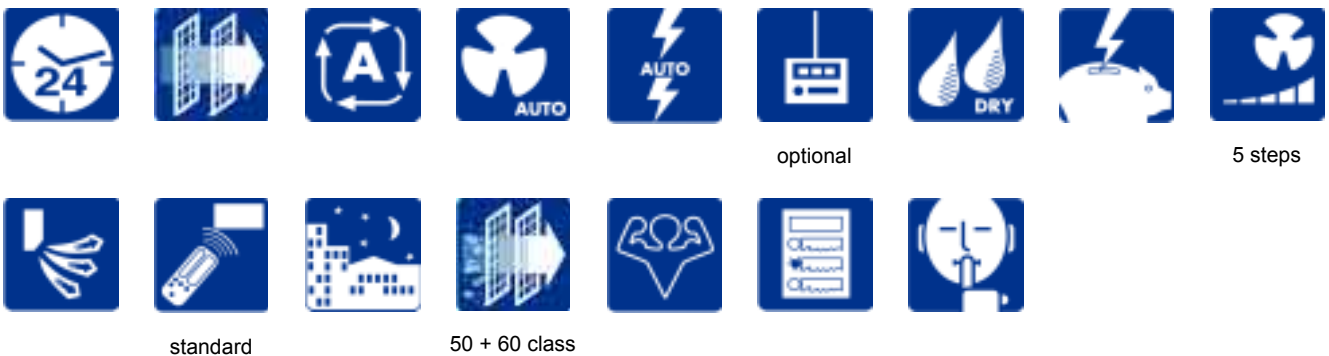
TABLE OF CONTENTS

FTYN-EV1B

1	Features	2
2	Specifications	3
	For indoor units only	3
	Technical Specifications	3
	Electrical Specifications	4
3	Dimensional drawing & centre of gravity	5
	Dimensional drawing	5
	Centre of gravity	6
4	Piping diagram	7
5	Wiring diagram	8
	Wiring diagram	8
6	Sound data	9
	Sound pressure spectrum	9

1 Features

- Flat front panel: its stylish appearance blends easily within any interior décor and is more easy to clean.
- Air purification filter: deodorises the air and helps to prevent bacterial and viral propagation
- Auto-swing function ensures efficient air and temperature distribution.
- Extremely quiet in operation both indoors and outdoors
- Powerful mode can be selected for rapid cooling or heating
- The photocatalytic deodorising air filter: powerfully decomposes cigarette and pet odours, removes house dust and pollen and deactivates bacteria and viruses
- Washable front panel
- Daikin remote controls give you easy control at your fingertips.
- The remote control has a 24-hour timer
- The indoor unit also has a start/stop button mounted on the front panel
- Up to 5 indoor units can be operated from a single centralised control
- Purpose-designed holder provided for your remote control



2 Specifications

2-1 FOR INDOOR UNITS ONLY			FTYN50EV1B	FTYN60EV1B
Nominal Input	Cooling	kW	0.034	0.040
	Heating	kW	0.036	0.045

2-2 TECHNICAL SPECIFICATIONS				FTYN50EV1B	FTYN60EV1B
Casing	Colour			White	
Dimensions	Packing	Height	mm	366	366
		Width	mm	1147	1147
		Depth	mm	337	337
	Unit	Height	mm	290	290
		Width	mm	1050	1050
		Depth	mm	238	238
Weight	Unit		kg	12.0	12.0
	Packed Unit		kg	17.0	17.0
Heat Exchanger	Dimensions	Length	mm	863	863
		Nr of Rows		2	2
		Fin Pitch	mm	1.40	1.40
		Nr of Stages		16	16
	Tube type		Hi-XA (7)		
Fin		Type			ML fin (Multi louver)
Fan	Type			Cross flow fan	
Air Flow Rate	Cooling	High	m ³ /min	14.7	16.2
		Medium	m ³ /min	12.4	13.6
		Low	m ³ /min	10.3	11.4
	Heating	High	m ³ /min	16.1	17.4
		Medium	m ³ /min	13.9	15.1
		Low	m ³ /min	11.5	12.7
Fan	Motor	Quantity		1	1
		Model		ARW30R8P43DA	
		Number of steps		5 steps, silent and auto	
Motor	Speed (cooling)	High	rpm	1240	1330
		Medium	rpm	1090	1170
		Low	rpm	930	1010
	Speed (heating)	High	rpm	1270	1360
		Medium	rpm	1120	1200
		Low	rpm	960	1040
Fan	Motor	Output (high)	W	43	43
Cooling	Sound Power Pressure	High	dBA	59.0	61.0
		High	dBA	43.0	45.0
		Low	dBA	34.0	36.0
Heating	Sound Power Pressure	High	dBA	58.0	60.0
		High	dBA	42.0	44.0
		Low	dBA	33.0	35.0
Refrigerant	Type			R-410A	
Piping connections	Liquid (OD)	Diameter (OD)	mm	6.35	6.35
		Gas	Diameter (OD)	mm	12.7
	Drain	Diameter (OD)	mm	18	18
	Heat Insulation			Both liquid and gas pipes	
Air Filter			Removable/washable/Mildew proof		
Air direction control			Left, right, up and downwards		
Temperature control			Microcomputer control		

2 Specifications

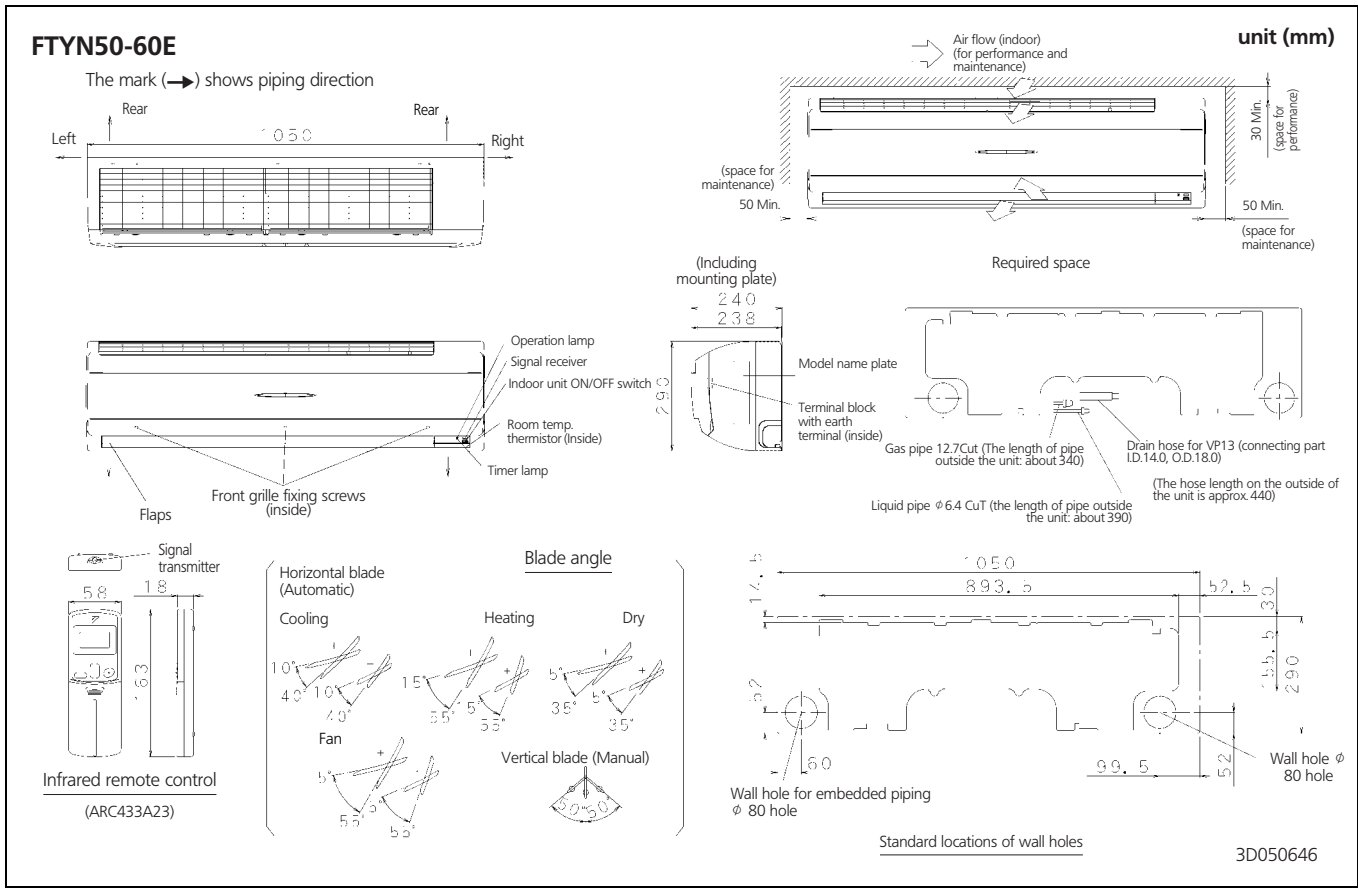
2

2-2 TECHNICAL SPECIFICATIONS		FTYN50EV1B	FTYN60EV1B
Standard Accessories	Item	Installation manual	
	Quantity	1	1
	Item	Operation manual	
	Quantity	1	1
	Item	Infrared remote control	
	Quantity	1	1
	Item	Indoor unit fixing screws	
	Quantity	2	2
	Item	Batteries	
	Quantity	2	2
	Item	Titanium apatite photocatalytic air purification filter	
	Quantity	2	2
	Item	Remote control holder	
	Quantity	1	1
Item	Mounting plate		
Quantity	1	1	
Notes	Sound values are measured in an anechoic room.		
	Sound pressure level is a relative value, depending on the distance and acoustic environment. For more details, please refer to sound level drawings of this chapter.		
	The sound power level is an absolute value indicating the power which a sound source generates.		

2-3 ELECTRICAL SPECIFICATIONS				FTYN50EV1B	FTYN60EV1B
Power Supply	Name			V1	
	Phase			1	1
	Frequency	Hz		50	50
	Voltage	V		220-240	
Current	Nominal running current (RLA)	Cooling	A	0.15	0.18
		Heating	A	0.16	0.20
Wiring connections	For Power Supply	Quantity		3	3
		Remark	4 for interunit wiring (included earth wiring)		
Voltage range	Minimum			-10%	
	Maximum			+10%	
Power Supply Intake				Outdoor unit only	

3 Dimensional drawing & centre of gravity

3 - 1 Dimensional drawing

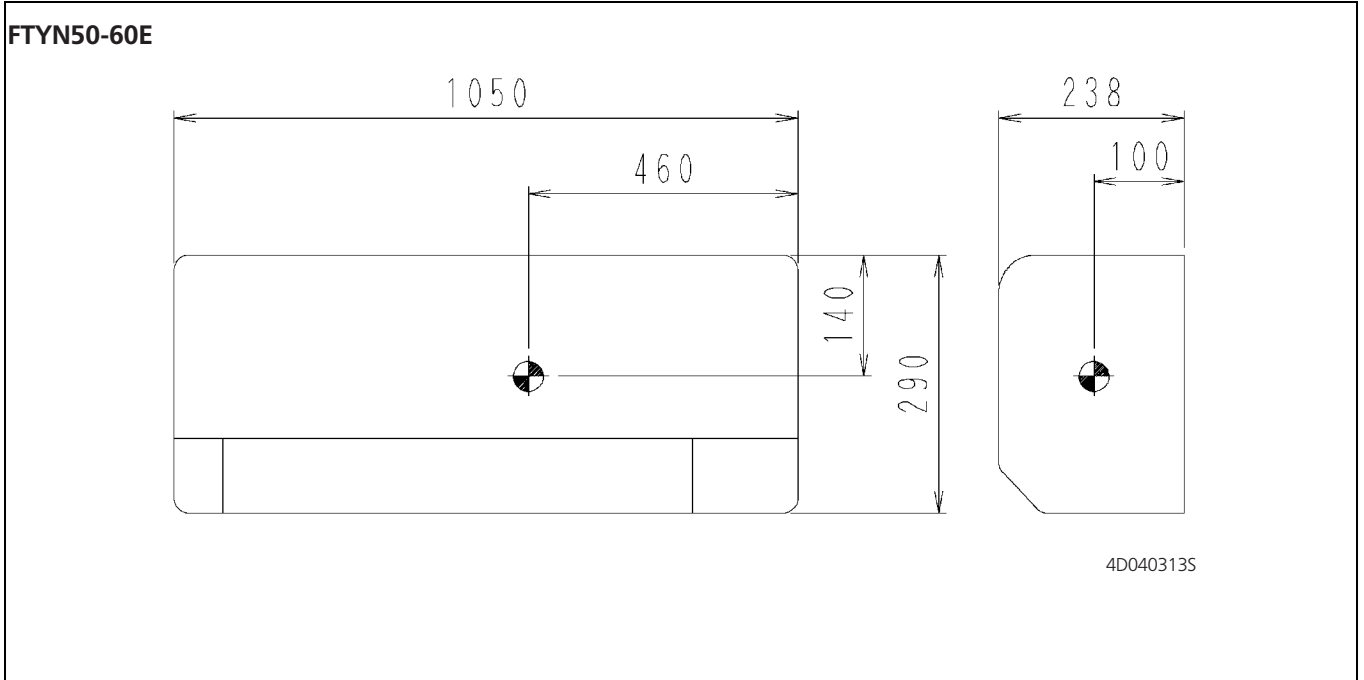


3

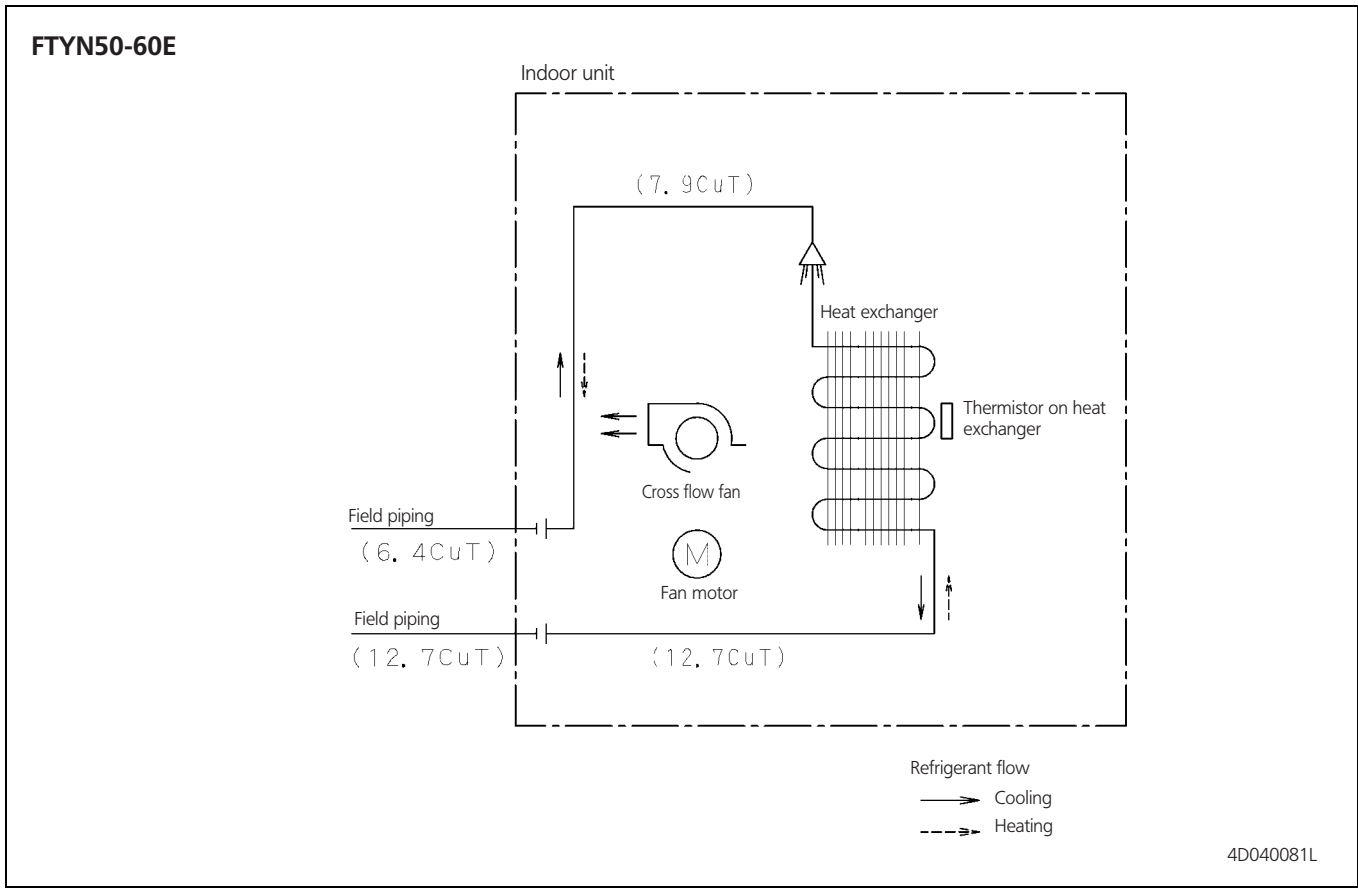
3 Dimensional drawing & centre of gravity

3 - 2 Centre of gravity

3

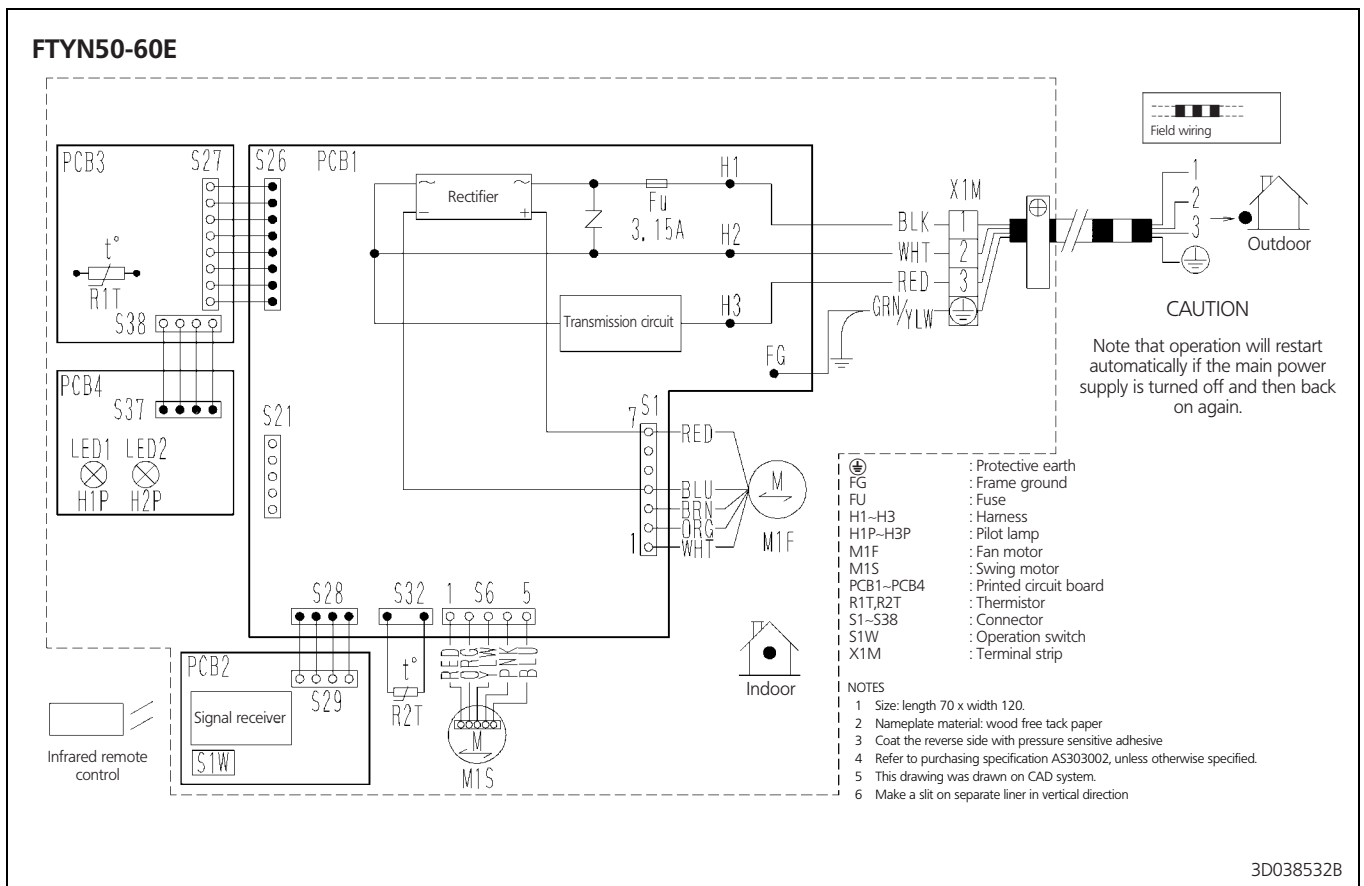


4 Piping diagram



5 Wiring diagram

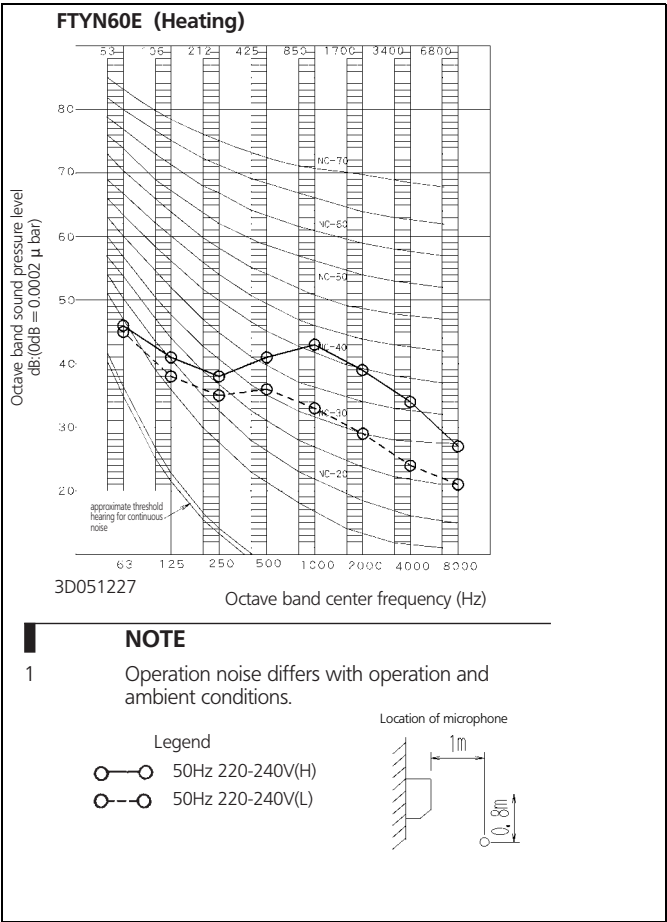
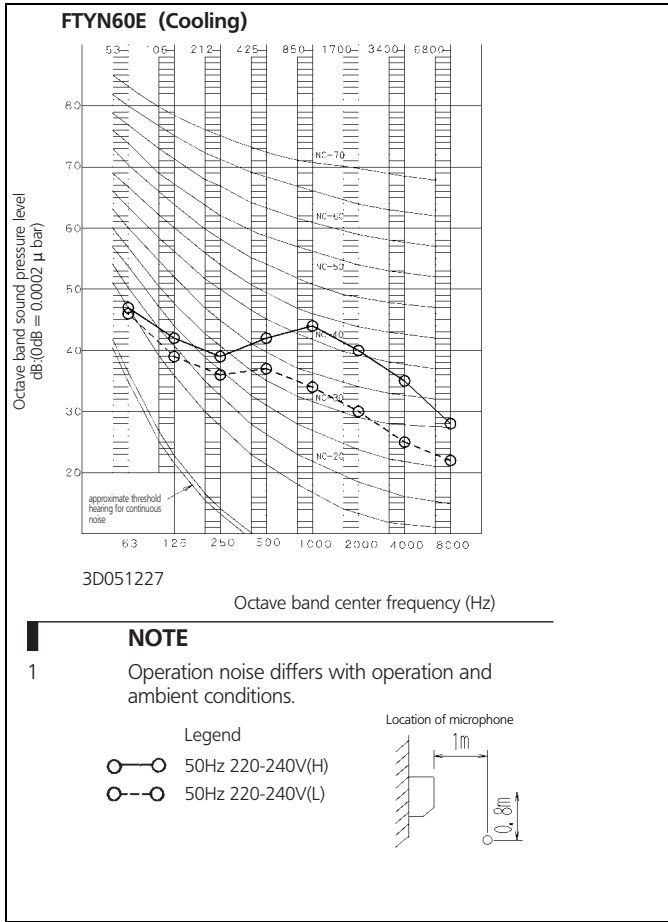
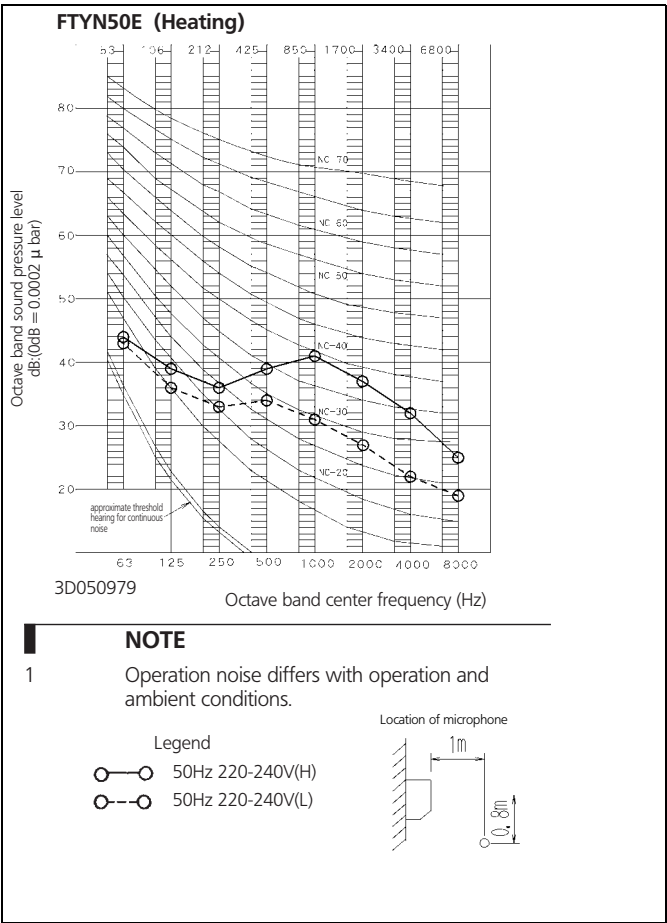
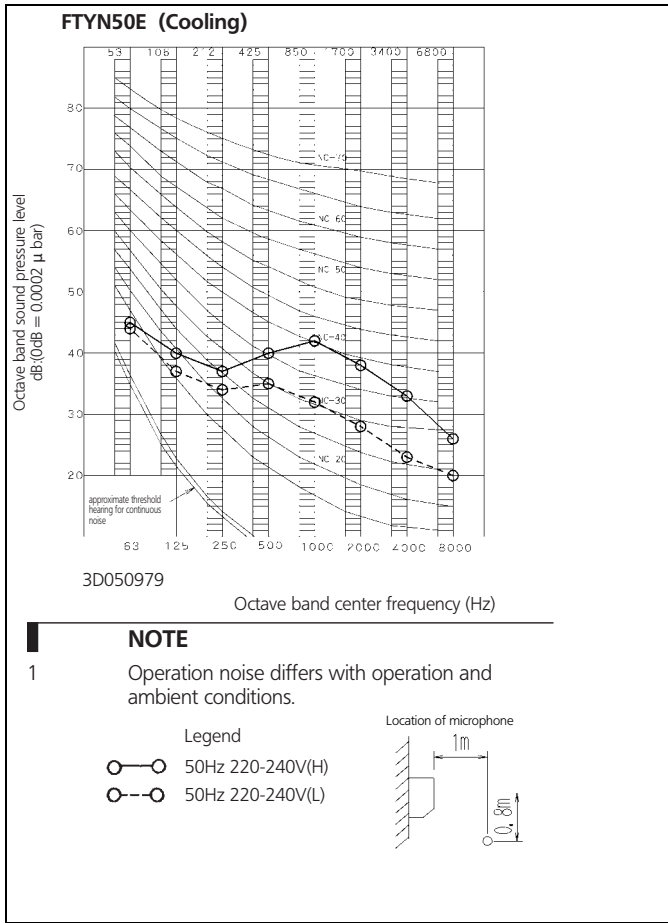
5 - 1 Wiring diagram



3D038532B

6 Sound data

6 - 1 Sound pressure spectrum



6 Sound data

6 - 1 Sound pressure spectrum

Split - Sky Air

The present publication is drawn up by way of information only and does not constitute an offer binding upon Daikin Europe N.V.. Daikin Europe N.V. has compiled the content of this publication to the best of its knowledge. No express or implied warranty is given for the completeness, accuracy, reliability or fitness for particular purpose of its content and the products and services presented therein. Specifications are subject to change without prior notice. Daikin Europe N.V. explicitly rejects any liability for any direct or indirect damage, in the broadest sense, arising from or related to the use and/or interpretation of this publication. All content is copyrighted by Daikin Europe N.V..



ISO14001 assures an effective environmental management system in order to help protect human health and the environment from the potential impact of our activities, products and services and to assist in maintaining and improving the quality of the environment.



Daikin units comply with the European regulations that guarantee the safety of the product.



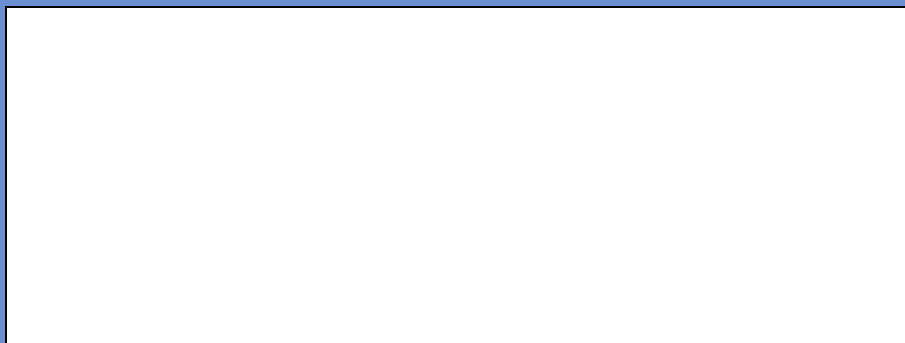
Daikin Europe N.V. is approved by LRQA for its Quality Management System in accordance with the ISO9001 standard. ISO9001 pertains to quality assurance regarding design, development, manufacturing as well as to services related to the product.



Daikin Europe N.V. is participating in the EUROVENT Certification Programme. Products are as listed in the EUROVENT Directory of Certified Products.

DAIKIN EUROPE N.V.

Zandvoordestraat 300
B-8400 Ostend - Belgium
www.daikineurope.com



EEDE06-1/3