



# Air Conditioning Technical Data

Wall mounted unit



EEEN15-100

FTXM-K



# TABLE OF CONTENTS

## FTXM-K

1	Features .....	2
2	Specifications .....	3
	Technical Specifications .....	3
	Electrical Specifications .....	4
3	Options .....	5
4	Dimensional drawings .....	6
5	Centre of gravity .....	8
6	Piping diagrams .....	10
7	Wiring diagrams .....	13
	Wiring Diagrams - Single Phase .....	13
8	Sound data .....	14
	Sound Pressure Spectrum .....	14

# 1 Features

## Discreet, modern design for optimal efficiency and comfort thanks to 2 area intelligent eye

- Choosing for an R-32 product, reduces the environmental impact with 68% compared to R-410A and leads directly to lower energy consumption thanks to its high energy efficiency
- Discreet, modern design. Its smooth curve blends beautifully with the wall resulting in an unobtrusive presence that matches all interior décors.
- High quality matt crystal white finish
- Whisper quiet in operation: the operating of the unit can hardly be heard. The sound pressure level goes down to 19dBA!
- Ideal for installation in bedrooms (20,25 class) and larger or irregular shaped living areas (35,42,50 class)
- 2-area intelligent eye: air flow is sent to a zone other than where the person is located at that moment; if no people are detected, the unit will automatically switch over to the energy-efficient setting. (35,42,50 class)
- New remote control design, also in high quality matt white finish to give a perfect match with the indoor unit
- Energy saving during standby mode: reduces current consumption by about 80% when operating in standby. If no people are detected for more than 20 minutes, the system will automatically switch to the current-saving mode.
- Online controller (optional): control your indoor from any location with an app, via your local network or internet

1



Econo mode



2 area intelligent eye



Energy saving during standby mode



Night set mode



Fan only



Comfort mode



Powerful mode



Auto cooling-heating changeover



Whisper quiet



Indoor unit silent operation



3-D air flow



Vertical auto swing



Horizontal auto swing



Auto fan speed



Dry programme



Titanium apatite photocatalytic air purification filter



Weekly timer



24 hour timer



Infrared remote control



Wired remote control



Centralised control



Online controller via app



Auto-restart



Self diagnosis

## 2 Specifications

2-1 Technical Specifications				FTXM20K	FTXM25K	FTXM35K	FTXM42K	FTXM50K	
Power input - 50Hz	Cooling	Nom.	kW	0.040		0.026	0.024	0.026	
	Heating	Nom.	kW	0.040		0.028	0.030	0.032	
Casing	Colour			White					
Dimensions	Unit	Height/Width/Depth	mm	289 (1)/780/215		298 (1)/900/215			
	Packed unit	Height/Width/Depth	mm	274/850/346		290/977/371			
Weight	Unit			8		11			
	Packed unit			12		15			
Packing	Weight		kg	4					
Heat exchanger	Length		mm	610		665			
	Rows	Quantity		2					
	Fin pitch		mm	1.4					
	Stages	Quantity		14		18			
	Tube type		ø7 HI-XA			Ø6,35 HI-XB			
	Fin	Type		ML fin (Multi louver)		Multi slit fin			
Heat exchanger 2	Length		mm	-		660			
	Rows	Quantity		-					
	Fin pitch		mm	-					
	Stages	Quantity		-		8			
Air filter	Type			Removable / washable / mildew proof					
Fan	Type			Cross flow fan					
	Air flow rate	Cooling	High	m³/min	8.8	9.1	11.2		11.9
				cfm	311	321	395		420
			Nom.	m³/min	6.7	7.0	8.5	9.1	9.6
				cfm	237	247	300	321	339
			Low	m³/min	4.7	5.0	5.8	7.0	7.4
		cfm		166	177	205	247	261	
		Silent operation	m³/min	3.9		4.1		4.5	
			cfm	138		145		159	
		Heating	High	m³/min	9.5	10.0	12.1	12.4	13.3
				cfm	335	353	427	438	470
	Nom.		m³/min	7.8	8.0	9.3	10.0	10.8	
			cfm	275	282	328	353	381	
	Low		m³/min	6.0		6.5	7.8	8.4	
			cfm	212		230	275	297	
	Silent operation	m³/min	4.3		4.2	5.2	5.5		
cfm		152		148	184	194			
Fan motor	Model			MM6C02J2VA		KFD-280-23-8C			
	Speed	Steps		5 + silent, + auto					
		Cooling	High/Medium/Low/Silent operation	rpm	1,330/1,050/780/670	1,370/1,090/820/670	1,330/1,050/780/600	1,330/1,110/900/600	1,400/1,170/940/650
	Heating	High/Medium/Low/Silent operation	rpm	1,360/1,140/920/690	1,410/1,160/920/690	1,420/1,130/850/610	1,450/1,210/980/720	1,540/1,290/1,040/750	
Output	Rated		W	16		23			
Sound power level	Cooling		dBA	56	57	59		60	
	Heating		dBA	56	57	59		60	
Sound pressure level	Cooling	High/Nom./Low/Silent operation	dBA	40/32/24/19	41/33/25/19	45/37/29/19	45/39/33/21	46/40/34/23	
	Heating	High/Nom./Low/Silent operation	dBA	40/34/27/19	41/34/27/19	45/39/29/19	45/39/33/22	47/40/34/24	

## 2 Specifications

2-1 Technical Specifications			FTXM20K	FTXM25K	FTXM35K	FTXM42K	FTXM50K
Control systems	Infrared remote control		ARC466A6		ARC466A9		
Piping connections	Liquid	OD	6.35				
	Gas	OD	9.5		12.7		
	Drain		18				
	Heat insulation		Both liquid and gas pipes				
Temperature control	Microcomputer control						
Air direction control	Right, Left, Horizontal, Downward						

Standard Accessories : Operation manual; Quantity : 1;

Standard Accessories : Installation manual; Quantity : 1;

Standard Accessories : Infrared remote control; Quantity : 1;

Standard Accessories : Batteries; Quantity : 2;

Standard Accessories : Mounting plate; Quantity : 1;

Standard Accessories : Indoor unit fixing screws; Quantity : 2;

Standard Accessories : Titanium apatite photocatalytic air purification filter; Quantity : 2;

Standard Accessories : Remote control holder; Quantity : 1;

2-2 Electrical Specifications				FTXM20K	FTXM25K	FTXM35K	FTXM42K	FTXM50K
Power supply	Name			V1				
	Phase			1~				
	Frequency	Hz		50				
	Voltage		V	220-240				
Current	Nominal running current (RLA) - 50Hz	Cooling	A	0.19 (2) / 0.18 (3) / 0.17 (1)		0.12 (2) / 0.12 (3) / 0.11 (1)	0.11 (2) / 0.11 (3) / 0.11 (1)	0.12 (2) / 0.12 (3) / 0.11 (1)
		Heating	A	0.19 (2) / 0.18 (3) / 0.17 (1)		0.13 (2) / 0.13 (3) / 0.12 (1)	0.14 (2) / 0.14 (3) / 0.13 (1)	0.15 (2) / 0.14 (3) / 0.14 (1)

### Notes

(1) 240V

(2) 220V

(3) 230V

SL: The silent fan level of the air flow rate setting

# 3 Options

## 3 - 1 Options

### FTXM-K

#### Indoor Units - Control systems

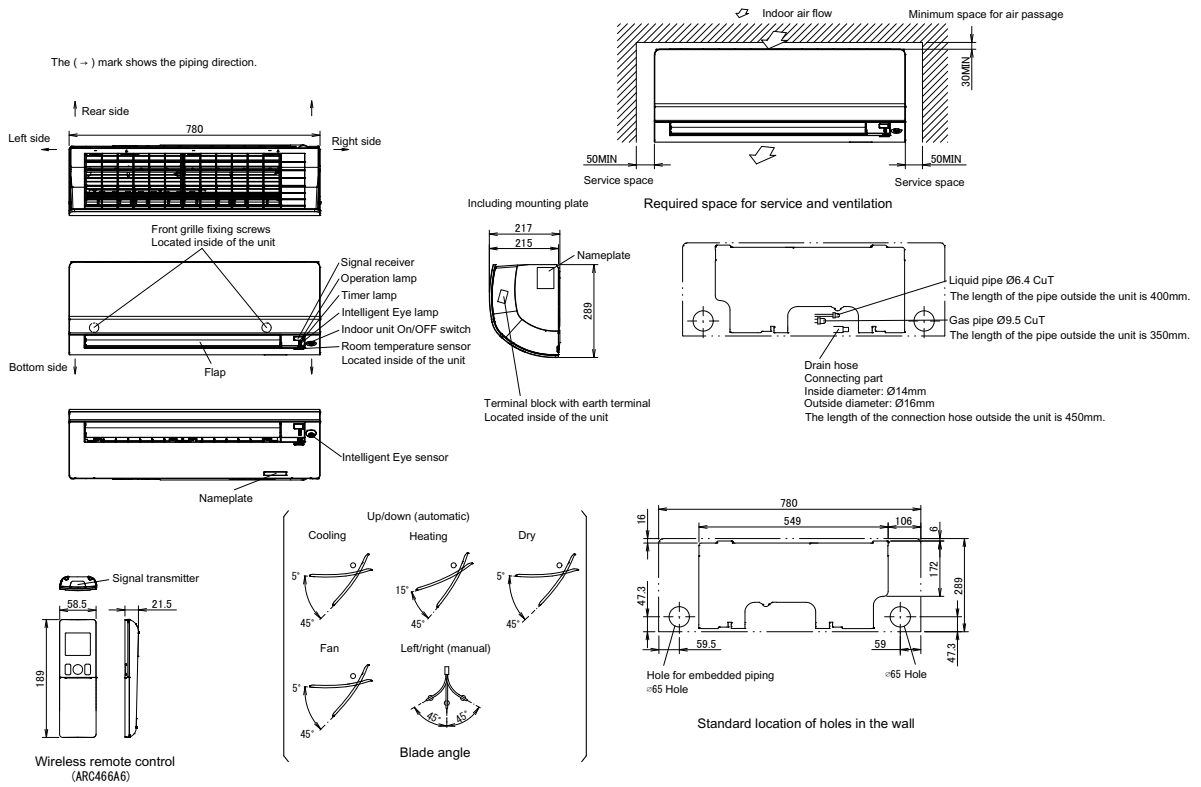
		FTXM20-25K	FTXM35-50K
Wired remote control		BRC344 (3) (4) BRC073 (3) (4)	BRC344 (3) BRC073 (3)
Cord for wired remote control	3m	BRCW901A03	
	8m	BRCW901A08	
Wiring adapter normal open contact / normal open pulse contact		KRP413A1S (1) (4)	KRP413A1S (1)
Centralised control board	Up to 5 rooms	KRC72 (2)	KRF910A4
Anti-theft protection for remote control		KRP980A1	-
Interface adapter for wired remote control		KRP928A2S (4)	KRP928A2S
Interface adapter for DIII-net		BRP069A43	BRP069A42
Online controller		RTD-RA (4)	RTD-RA
Modbus gateway		KJLC-DD (4)	KJLC-DD

- (1) Wiring adapter supplied by Daikin. Time clock and other devices: to be purchased locally.
- (2) Wiring adapter is also required for each indoor unit.
- (3) Cord for wired remote control BRCW901A03 or BRCW901A08 required.
- (4) Interface adapter KRP980A1, KRP067A41 or KRP980B2 required.

# 4 Dimensional drawings

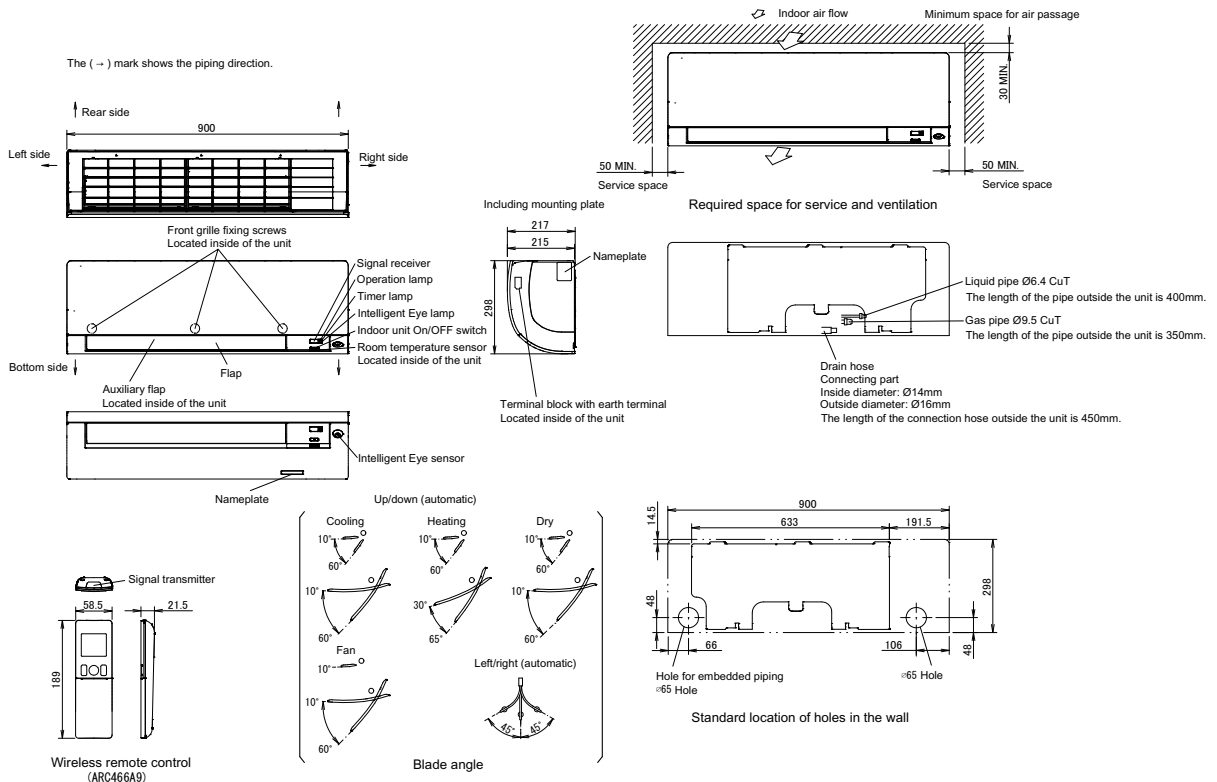
## 4 - 1 Dimensional Drawings

FTXM20-25K



30092183

FTXM35K



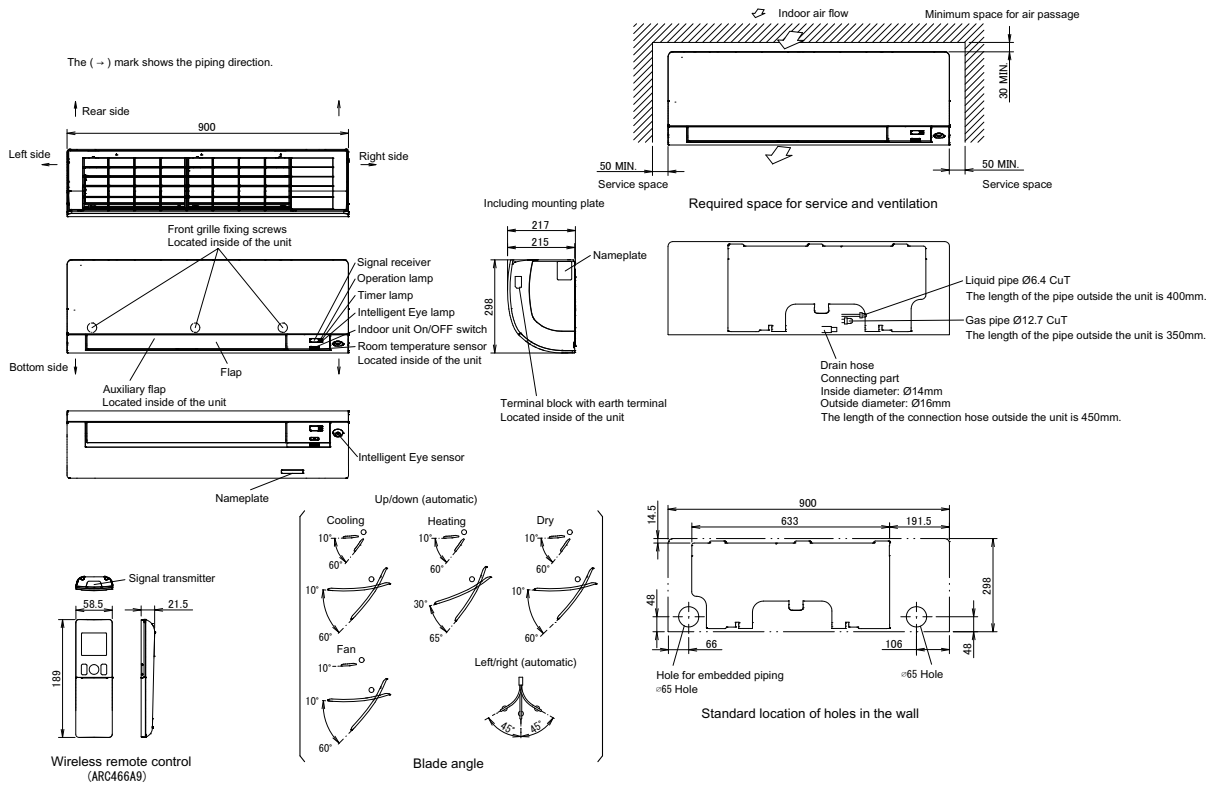
30092184



# 4 Dimensional drawings

## 4 - 1 Dimensional Drawings

FTXM42-50K

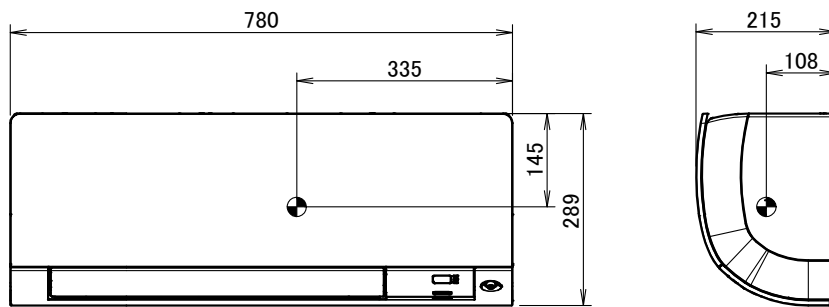


30092185

## 5 Centre of gravity

### 5 - 1 Centre of Gravity

FTXM20-25K

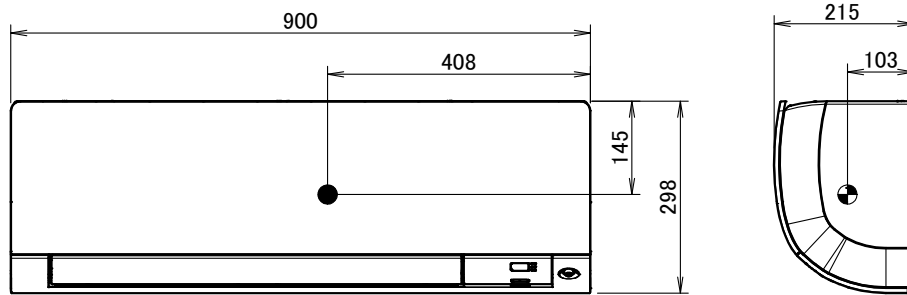


4D092125

# 5 Centre of gravity

## 5 - 1 Centre of Gravity

FTXM35-50K



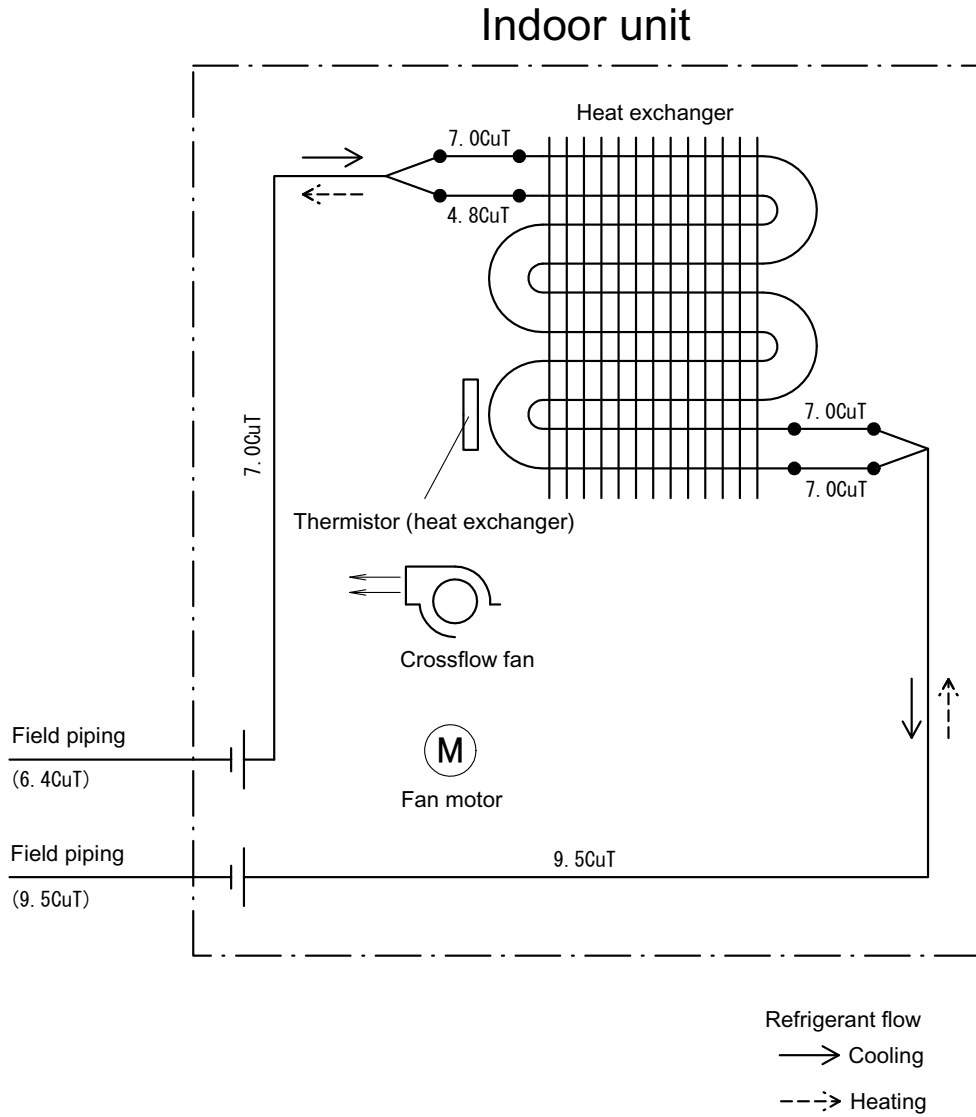
4D092126

# 6 Piping diagrams

## 6 - 1 Piping Diagrams

6

FTXM20-25K



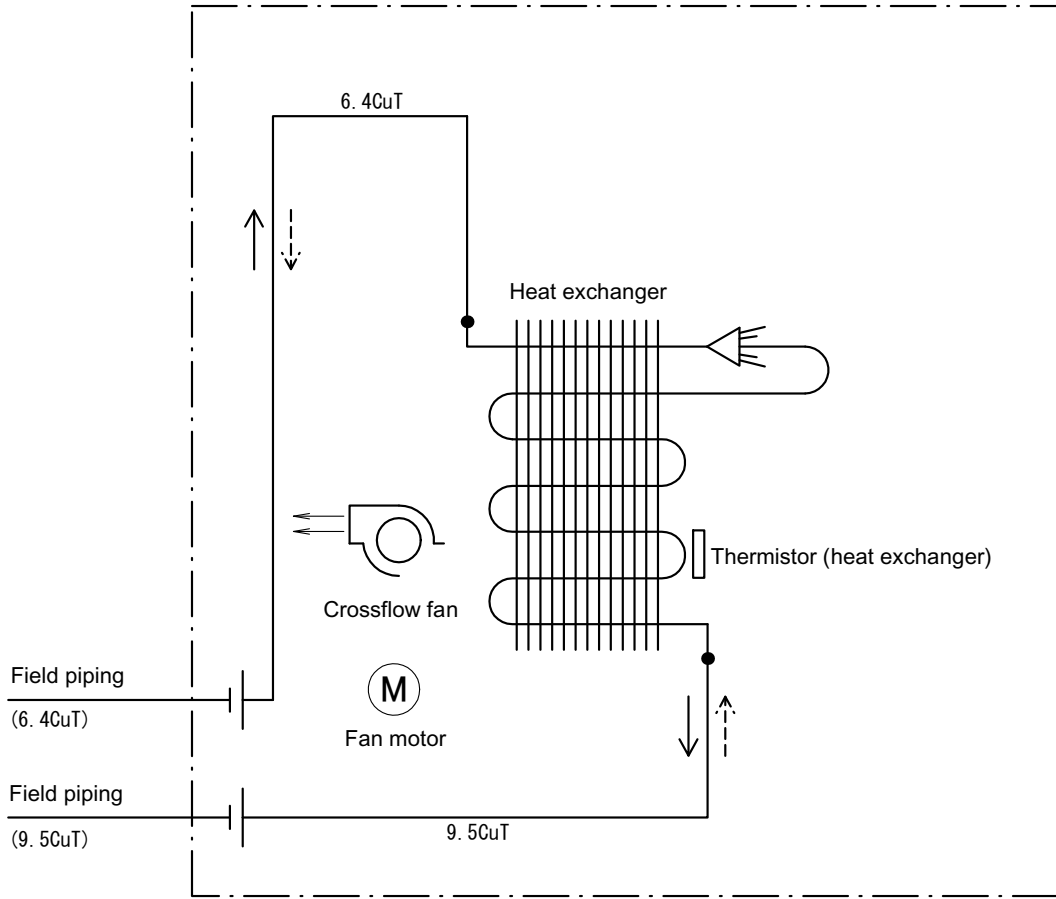
4D092170

# 6 Piping diagrams

## 6 - 1 Piping Diagrams

FTXM35K

### Indoor unit



Refrigerant flow  
→ Cooling  
- - -> Heating

4D092169

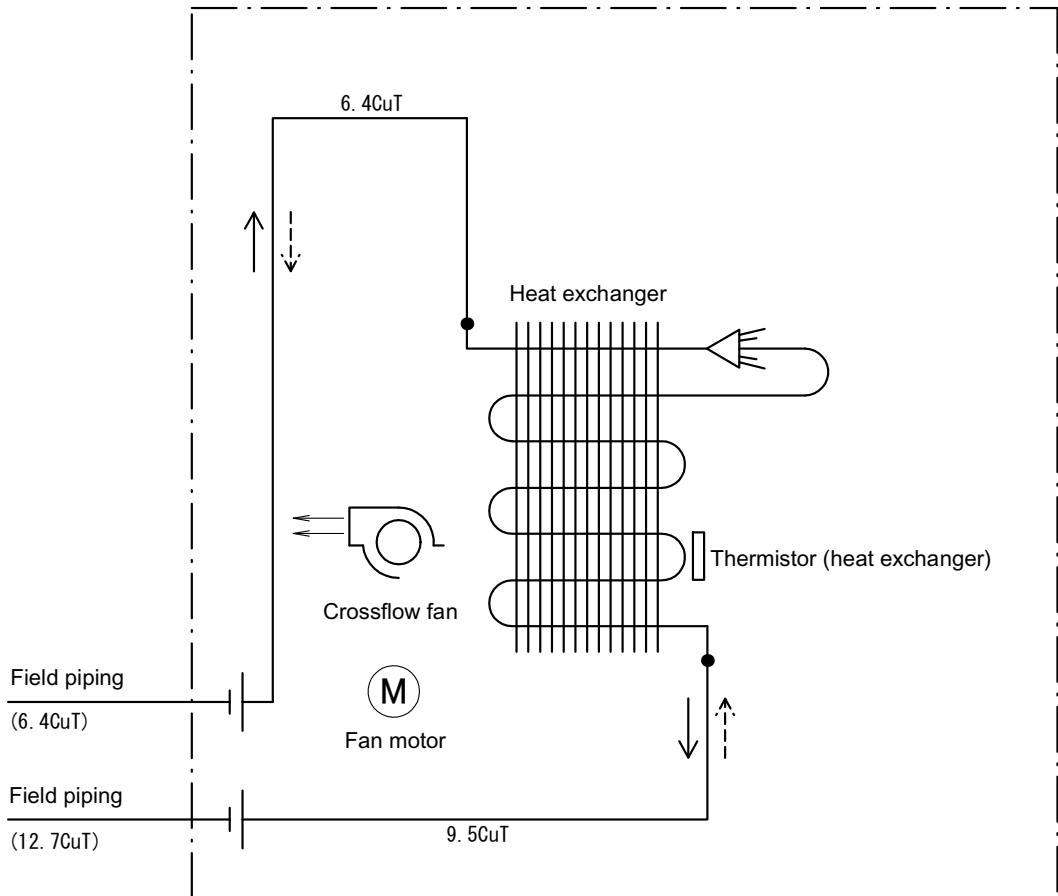
## 6 Piping diagrams

### 6 - 1 Piping Diagrams

6

FTXM42-50K

#### Indoor unit



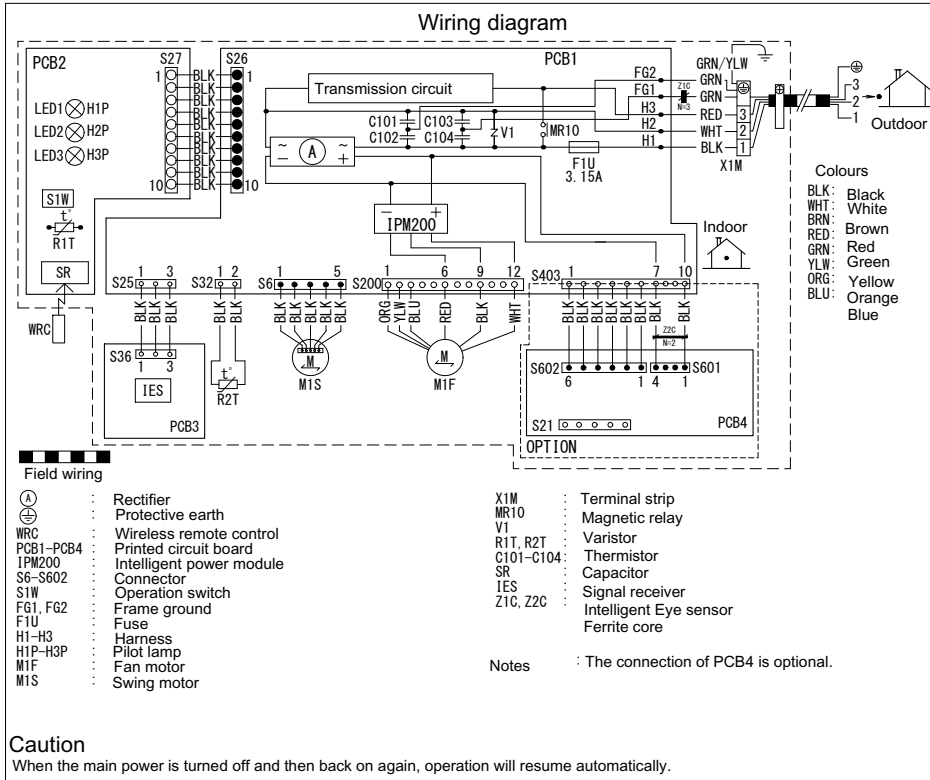
Refrigerant flow  
 —→ Cooling  
 - - - → Heating

4D092168

# 7 Wiring diagrams

## 7 - 1 Wiring Diagrams - Single Phase

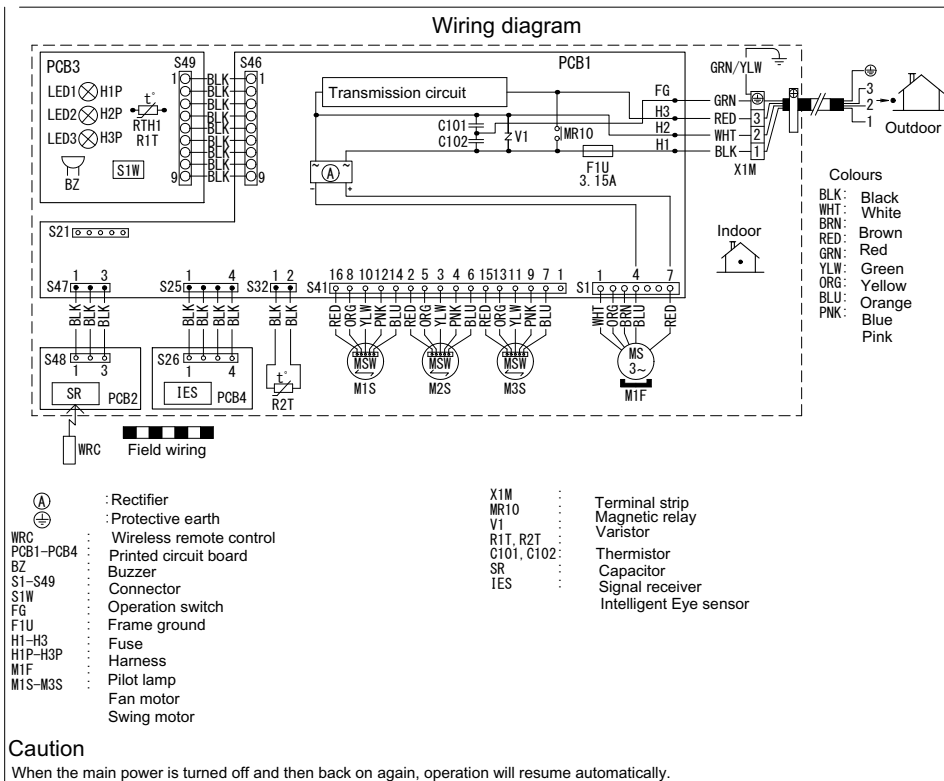
FTXM20-25K



Notes  
1. Size: length 100 X width 120.

3D093446A

FTXM35-50K



Notes  
1. Size: length 100 X width 120.

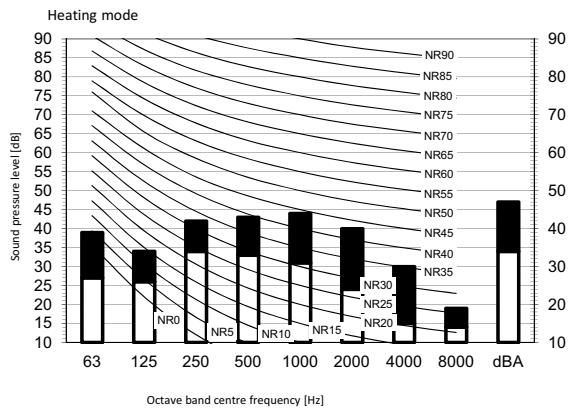
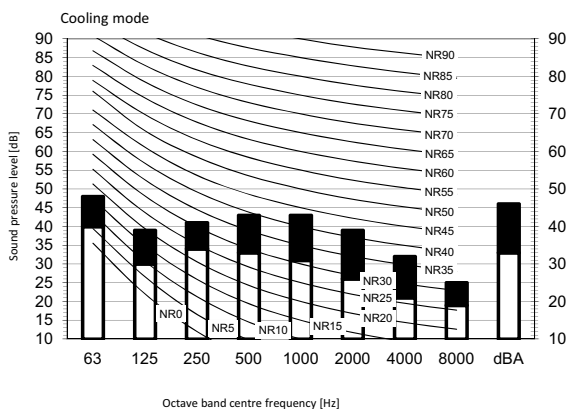
3D093481A

# 8 Sound data

## 8 - 1 Sound Pressure Spectrum

8

### FTXM20K



Legend

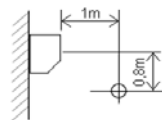
dBA = A-weighted sound pressure level (A scale according to IEC).

A Scale

B High-tap

C Low-tap

Location of microphone



Octave band centre frequency [Hz]

Cooling			Total dB		
A	B	C	A	B	C
dBA	40	24			

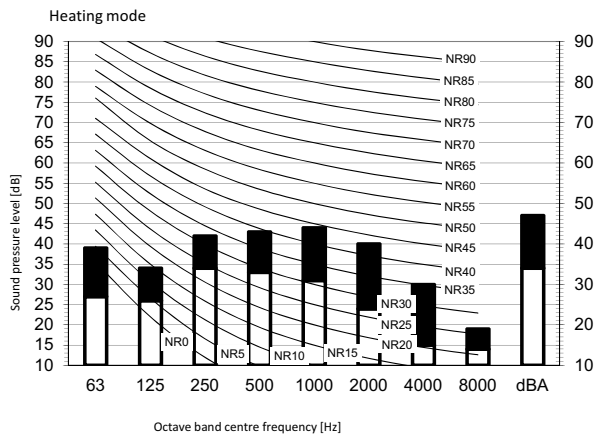
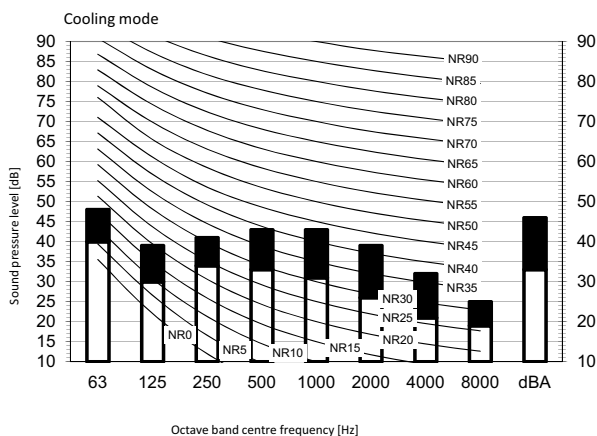
Heating			Total dB		
A	B	B	A	B	B
dBA	40	27			

Notes

1. Operating conditions: power source 220-240 V/220 V 50/60 Hz; JIS standard
2. Background noise already taken into account.
3. Operating noise varies depending on operation and ambient conditions.
4. The operation noise measuring method is in accordance with JISC9612.
5. Measuring location: anechoic chamber

3D092363A

### FTXM25K



Legend

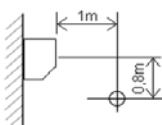
dBA = A-weighted sound pressure level (A scale according to IEC).

A Scale

B High-tap

C Low-tap

Location of microphone



Octave band centre frequency [Hz]

Cooling			Total dB		
A	B	C	A	B	C
dBA	41	25			

Heating			Total dB		
A	B	B	A	B	B
dBA	41	27			

Notes

1. Operating conditions: power source 220-240 V/220 V 50/60 Hz; JIS standard
2. Background noise already taken into account.
3. Operating noise varies depending on operation and ambient conditions.
4. The operation noise measuring method is in accordance with JISC9612.
5. Measuring location: anechoic chamber

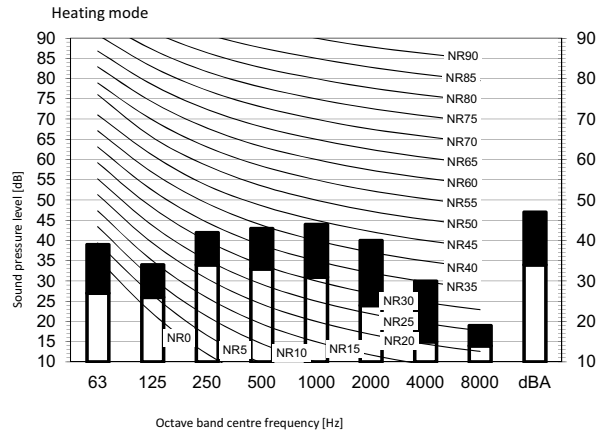
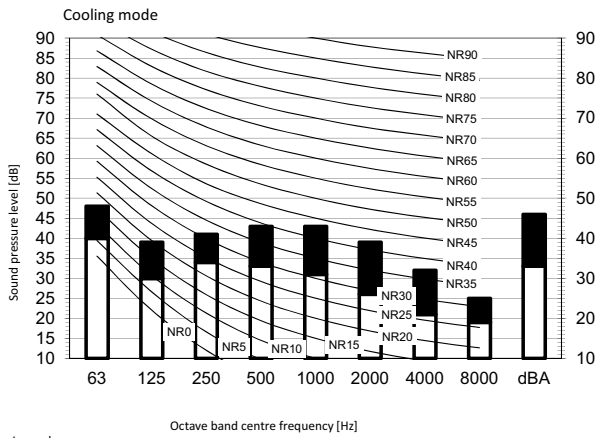
3D092364A



# 8 Sound data

## 8 - 1 Sound Pressure Spectrum

### FTXM35K



Legend

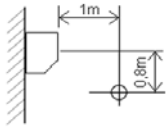
dBA = A-weighted sound pressure level (A scale according to IEC).

A Scale

B High-tap

C Low-tap

Location of microphone



Notes

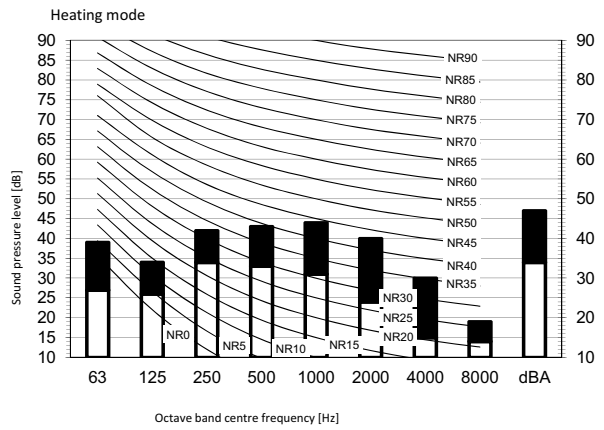
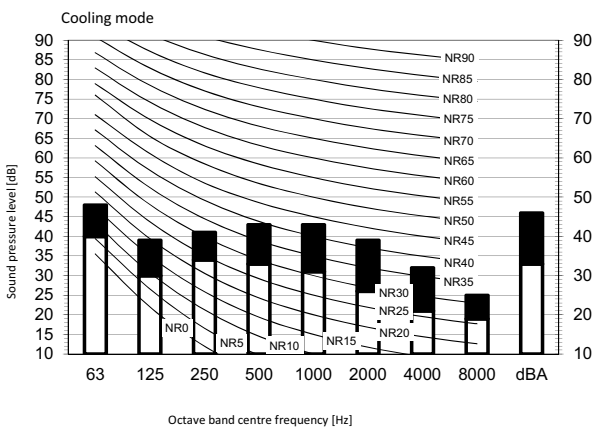
1. Operating conditions: power source 220-240 V/220 V 50/60 Hz; JIS standard
2. Background noise already taken into account.
3. Operating noise varies depending on operation and ambient conditions.
4. The operation noise measuring method is in accordance with JISC9612.
5. Measuring location: anechoic chamber

Cooling Total dB		
A	B	C
dBA	45	29

Heating Total dB		
A	B	B
dBA	45	29

3D092365A

### FTXM42K



Legend

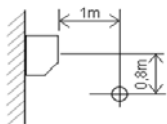
dBA = A-weighted sound pressure level (A scale according to IEC).

A Scale

B High-tap

C Low-tap

Location of microphone



Notes

1. Operating conditions: power source 220-240 V/220 V 50/60 Hz; JIS standard
2. Background noise already taken into account.
3. Operating noise varies depending on operation and ambient conditions.
4. The operation noise measuring method is in accordance with JISC9612.
5. Measuring location: anechoic chamber

Cooling Total dB		
A	B	C
dBA	45	33

Heating Total dB		
A	B	B
dBA	45	33

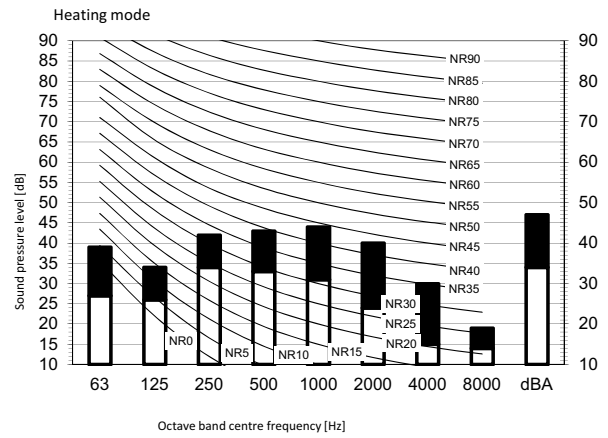
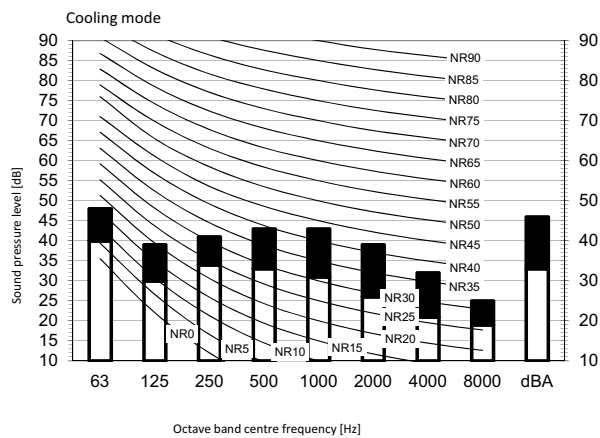
3D092366

# 8 Sound data

## 8 - 1 Sound Pressure Spectrum

8

### FTXM50K



**Legend**

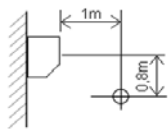
dBA = A-weighted sound pressure level (A scale according to IEC).

A Scale

B High-tap

C Low-tap

Location of microphone



Cooling		Total dB
A	B	C
dBA	46	34

Heating		Total dB
A	B	B
dBA	47	34

**Notes**

1. Operating conditions: power source 220-240 V/220 V 50/60 Hz; JIS standard
2. Background noise already taken into account.
3. Operating noise varies depending on operation and ambient conditions.
4. The operation noise measuring method is in accordance with JISC9612.
5. Measuring location: anechoic chamber

3D092420



Daikin Europe N.V. participates in the Eurovent Certification programme for Liquid Chilling Packages (LCP), Air handling units (AHU), Fan coil units (FCU) and variable refrigerant flow systems (VRF) Check ongoing validity of certificate online: [www.eurovent-certification.com](http://www.eurovent-certification.com) or using: [www.certiflash.com](http://www.certiflash.com)

The present leaflet is drawn up by way of information only and does not constitute an offer binding upon Daikin Europe N.V.. Daikin Europe N.V. has compiled the content of this leaflet to the best of its knowledge. No express or implied warranty is given for the completeness, accuracy, reliability or fitness for particular purpose of its content and the products and services presented therein. Specifications are subject to change without prior notice. Daikin Europe N.V. explicitly rejects any liability for any direct or indirect damage, in the broadest sense, arising from or related to the use and/or interpretation of this leaflet. All content is copyrighted by Daikin Europe N.V.

BARCODE

Daikin products are distributed by: