

FTXM-K + RXM-L

Product catalogue 2015





## Why choose Daikin

Our promise is to ensure that your customers can depend on Daikin for **the ultimate in comfort**. We dedicate ourselves to **technological excellence, a focus on design and the highest quality**.

Our care for the planet is absolute. Our products are at the forefront of **low energy consumption** and we innovate continuously to reduce the environmental impact of HVACR solutions further.

We will continue our **global leadership**, as our expertise in all market sectors, combined with 90 years' experience, enables us to deliver added value in long-lasting relationships based on trust, respect and credibility.

Daikin service centres provide you with **technical support** before and after sales, and on delivery of our products. They are prompt, reliable and understanding, and their advice is **tailored to our customers' specific needs**: onsite support for you and your customers, help with installation, troubleshooting and maintenance.

We provide you with **technical product training** so that you can act quickly and professionally when your customers need you.

# Why choose a Daikin split system?

## Benefits for the installer

### Easy to install

Daikin is a world leader in air conditioning and heating. So no matter what your customers' needs are, you will be able to find a heating or cooling solution that is ideal for them in our wide product range. We are an environmentally responsible company, so all our products are designed to be highly efficient all year round. Their low energy consumption also means that your customers will have lower energy bills.

### Service

Our expertise makes life easier for your customers with features like intelligent eye and weekly timer, as well as a smartphone app or a user-friendly remote control they can use to control their systems. They will enjoy our units' whisper quiet operation and the perfect airflow pattern which creates the ideal indoor climate.

### Reliable products

You can reassure them that Daikin products are renowned for their reliability and that when they do need servicing, we are there to provide you, and your customers, with everything you need.

- The ideal solution for each application thanks to the **wide range of available products** both for cooling and heating
- **Low energy** bills thanks to high seasonal efficiencies up to A+++ and energy saving features such as intelligent eye and weekly timer
- Control via a **smartphone app** or a user friendly remote controller
- Perfect **comfort: whisper quiet sound** level & **perfect airflow** pattern



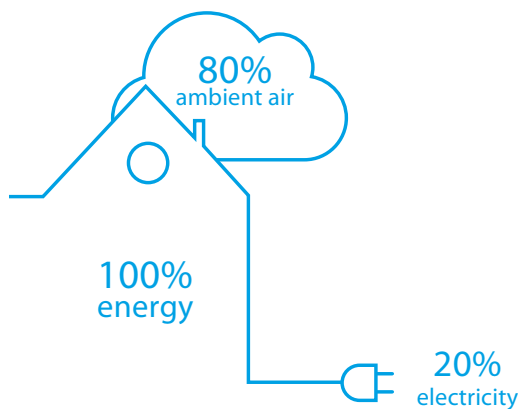
## What is an air-to-air heat pump?

Heat pumps extract heat from the outside air, even in cold weather. They use an electrically powered compressor and are extremely effective at heating a flat or a house. Daikin heat pumps are silent and discreet, and use state-of-the-art technology to keep your energy bills as low as possible. With a Daikin heat pump, 80% of the energy used to heat your home comes from the outside air, a free and infinitely renewable resource! For cooling, the system is reversed, extracting heat from the indoor air.

## One room or more, the choice is yours.

By choosing a multi outdoor unit, you can connect up to nine wall mounted indoor units to a single outdoor unit to create the perfect climate everywhere in your house. All indoor units can be individually controlled and do not need to be installed in the same room or not even at the same time.

For more information see page 50



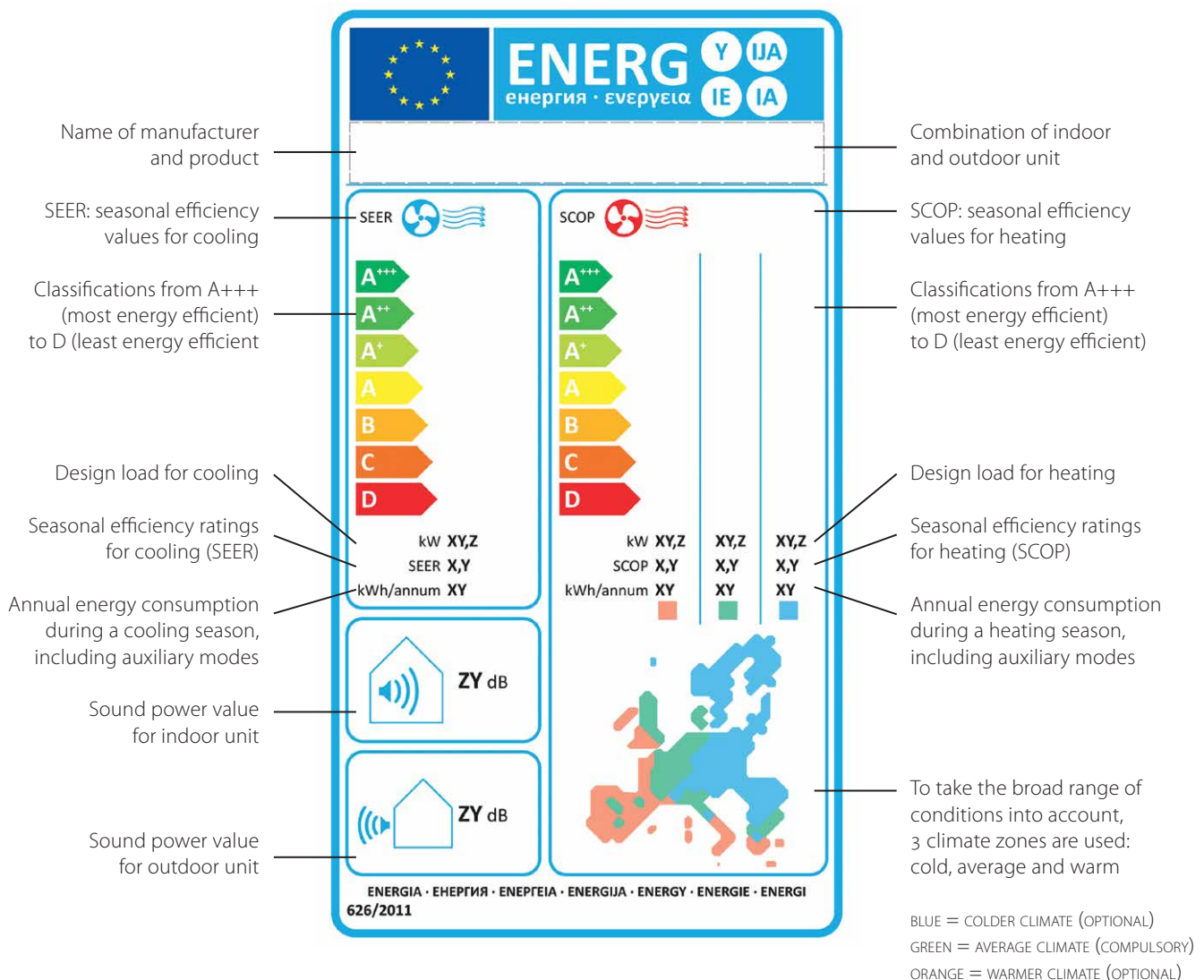
# Europe's New Energy Label

## Labelling to encourage intelligent choices

To enable consumers to compare and make purchasing decisions based on uniform labelling criteria, Europe has introduced energy labels. The previous European energy label for air conditioners, introduced in 1992, did its job for the time. In 2013, Europe introduced a seasonal energy label. This label allows end users to make even more informed choices, since seasonal efficiency reflects air conditioner efficiency over an entire season.

The energy label includes multiple classifications from A+++ to D, reflected in colour shadings ranging from dark green (most energy efficient) to red (least efficient). Information on the label not only includes the seasonal efficiency ratings for heating (SCOP) and cooling (SEER), but also annual energy consumption and noise levels.

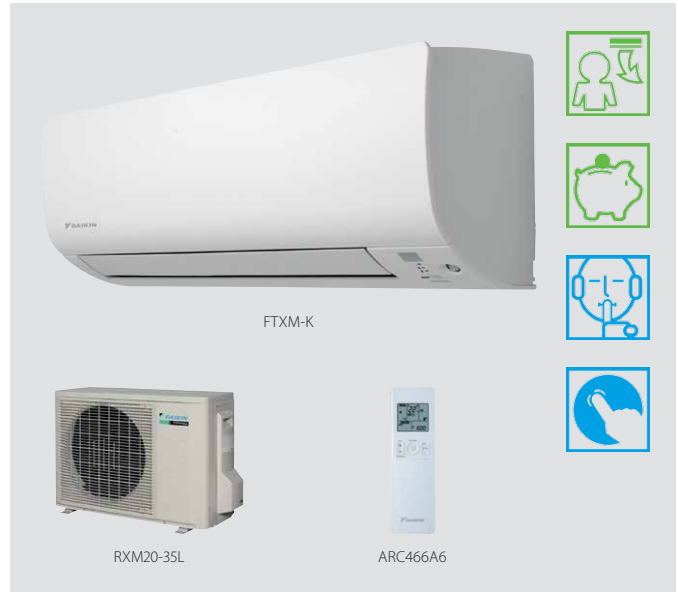
### The label more in detail



# Wall mounted unit

Discreet, modern design for optimal efficiency and comfort thanks to 2 area intelligent eye

- › Choosing for an R32 product, reduces the environmental impact with 68% compared to R-410A and leads directly to lower energy consumption thanks to its high energy efficiency
- › Discreet, modern design. Its smooth curve blends beautifully with the wall resulting in an unobtrusive presence that matches all interior décors.
- › High quality matt crystal white finish
- › Whisper quiet in operation: the operating of the unit can hardly be heard. The sound pressure level goes down to 19dBA!
- › Ideal for installation in bedrooms (20,25 class) and larger or irregular shaped living areas (35,42,50 class)
- › 2 area intelligent eye: air flow is sent to a zone other than where the person is located at that moment; if no people are detected, the unit will automatically switch over to the energy-efficient setting (35,42,50 class)
- › Online controller (optional): control your indoor from any location with an app, via your local network or internet



| Efficiency data                            |                           | FTXM + RXM                | 20K + 20L      | 25K + 25L         | 35K + 35L         | 42K + 42L         | 50K + 50L         |                   |
|--|---------------------------|---------------------------|----------------|-------------------|-------------------|-------------------|-------------------|-------------------|
| Cooling capacity                           | Min./Nom./Max.            | kW                        | 1.30/2.00/2.80 | 1.30/2.50/3.20    | 1.40/3.50/4.00    | 1.70/4.20/5.00    | 1.70/5.02/5.30    |                   |
| Heating capacity                           | Min./Nom./Max.            | kW                        | 1.30/2.50/4.30 | 1.30/2.80/4.70    | 1.40/4.00/5.20    | 1.70/5.40/6.00    | 1.70/5.80/6.50    |                   |
| Power input                                | Cooling                   | Min./Nom./Max.            | kW             | 0.320/0.441/0.760 | 0.320/0.576/1.000 | 0.350/0.855/1.190 | 0.320/1.213/2.330 | 0.350/1.476/1.810 |
|  | Heating                   | Min./Nom./Max.            | kW             | 0.310/0.550/1.120 | 0.310/0.620/1.410 | 0.340/0.840/1.460 | 0.400/1.310/1.980 | 0.300/1.450/2.000 |
| Seasonal efficiency (according to EN14825) | Cooling                   | Energy label              | A++            |                   |                   |                   |                   |                   |
|  |                           | Pdesign                   | kW             | 2.00              | 2.50              | 3.50              | 4.20              | 5.00              |
|  |                           | SEER                      |                | 7.79              | 8.30              | 7.81              | 7.14              | 7.22              |
|  | Heating (Average climate) | Annual energy consumption | kWh            | 90                | 105               | 157               | 206               | 242               |
|  |                           | Energy label              |                | A++               |                   |                   |                   | A+                |
|  |                           | Pdesign                   | kW             | 2.30              | 2.50              | 3.60              | 4.00              | 4.60              |
| Nominal efficiency                         | EER                       | SCOP                      | 4.77           | 4.78              | 4.85              | 4.38              | 4.55              |                   |
|  |                           | Annual energy consumption | kWh            | 675               | 733               | 1,039             | 1,278             | 1,416             |
|  | COP                       |                           | 4.53           | 4.34              | 4.09              | 3.46              | 3.40              |                   |
|  |                           |                           | 4.55           | 4.52              | 4.76              | 4.12              | 4.00              |                   |
| Annual energy consumption                  | kWh                       | 221                       | 288            | 428               | 607               | 738               |                   |                   |
| Energy label                               | Cooling/Heating           |                           | A/A            |                   |                   |                   |                   |                   |

| Indoor unit          |                             | FTXM                                | 20K                 | 25K             | 35K              | 42K               | 50K               |                   |
|----------------------|-----------------------------|-------------------------------------|---------------------|-----------------|------------------|-------------------|-------------------|-------------------|
| Casing               | Colour                      | White                               |                     |                 |                  |                   |                   |                   |
| Dimensions           | Unit                        | HeightxWidthxDepth                  | 289x780x215         |                 |                  | 298x900x215       |                   |                   |
| Weight               | Unit                        | kg                                  | 8                   |                 |                  | 11                |                   |                   |
| Air filter           | Type                        | Removable / washable / mildew proof |                     |                 |                  |                   |                   |                   |
| Fan - Air flow rate  | Cooling                     | High/Nom./Low/Silent operation      | m <sup>3</sup> /min | 8.8/6.7/4.7/3.9 | 9.1/7.0/5.0/3.9  | 11.2/8.5/5.8/4.1  | 11.2/9.1/7.0/4.1  | 11.9/9.6/7.4/4.5  |
|                      | Heating                     | High/Nom./Low/Silent operation      | m <sup>3</sup> /min | 9.5/7.8/6.0/4.3 | 10.0/8.0/6.0/4.3 | 12.1/9.3/6.5/4.2  | 12.4/10.0/7.8/5.2 | 13.3/10.8/8.4/5.5 |
| Sound power level    | Cooling                     |                                     | dBA                 | 56              | 57               | 59                |                   | 60                |
|                      | Heating                     |                                     | dBA                 | 56              | 57               | 59                |                   | 60                |
| Sound pressure level | Cooling                     | High/Nom./Low/Silent operation      | dBA                 | 40/32/24/19     | 41/33/25/19      | 45/37/29/19       | 45/39/33/21       | 46/40/34/23       |
|                      | Heating                     | High/Nom./Low/Silent operation      | dBA                 | 40/34/27/19     | 41/34/27/19      | 45/39/29/19       | 45/39/33/22       | 47/40/34/24       |
| Power supply         | Phase / Frequency / Voltage | Hz / V                              |                     |                 |                  | 1~ / 50 / 220-240 |                   |                   |
| Control systems      | Infrared remote control     |                                     | ARC466A6            |                 |                  | ARC466A9          |                   |                   |

| Outdoor unit                  |                             | RXM                   | 20L               | 25L   | 35L              | 42L               | 50L               |
|-------------------------------|-----------------------------|-----------------------|-------------------|-------|------------------|-------------------|-------------------|
| Dimensions                    | Unit                        | HeightxWidthxDepth    | 550x765x285       |       |                  | 735x825x300       |                   |
| Weight                        | Unit                        | kg                    | 34                |       |                  | 44                |                   |
| Sound power level             | Cooling                     |                       | dBA               | 59    |                  | 61                | 59                |
|                               | Heating                     |                       | dBA               | 60    |                  | 61                | 60                |
| Sound pressure level          | Cooling                     | High/Silent operation | dBA               | 47/43 | 49/44            |                   | 47/44             |
|                               | Heating                     | High/Silent operation | dBA               | 48/44 | 49/45            |                   | 48/45             |
| Operation range               | Cooling                     | Ambient               | Min.-Max.         | °CDB  |                  |                   | -10~46            |
|                               | Heating                     | Ambient               | Min.-Max.         | °CWB  |                  |                   | -15~18            |
| Refrigerant                   | Type/Charge/GWP             | kg/CO <sub>2</sub> Eq | R-32/0.72/0.5/675 |       | R-32/0.8/0.5/675 |                   | R-32/1.50/1.0/675 |
| Piping connections            | Liquid                      | OD                    | mm                |       |                  | 6.35              |                   |
|                               | Gas                         | OD                    | mm                |       |                  | 12.7              |                   |
| Piping length                 | OU - IU                     | Max.                  | m                 |       |                  | 30                |                   |
|                               | System                      | Chargeless            | m                 |       |                  | 10                |                   |
| Additional refrigerant charge | Level difference            | IU - OU               | Max.              |       |                  | m                 |                   |
|                               |                             |                       |                   |       |                  | 15                |                   |
| Power supply                  | Phase / Frequency / Voltage | Hz / V                |                   |       |                  | 1~ / 50 / 220-240 |                   |
| Current - 50Hz                | Maximum fuse amps (MFA)     | A                     |                   |       |                  | 10                |                   |
|                               |                             |                       |                   |       |                  | 15                |                   |

(1) EER/COP according to Eurovent 2012, for use outside EU only (2) Nominal efficiency: cooling at 35°/27° nominal load, heating at 7°/20° nominal load  
Contains fluorinated greenhouse gases