



Air Conditioning Technical Data

Floor standing unit



EEDEN14-100

FVQ-C

TABLE OF CONTENTS

FVQ-C

1	Features	2
2	Specifications	3
	Technical Specifications	3
	Electrical Specifications	4
3	Safety device settings	5
4	Options	6
5	Dimensional drawings	7
6	Piping diagrams	8
7	Wiring diagrams	9
	Wiring Diagrams - Single Phase	9
8	External connection diagrams	10
9	Sound data	11
	Sound Pressure Spectrum	11

1 Features

- Ideal solution for commercial spaces with no or narrow false ceilings
- Can be installed in both new and existing buildings
- Very efficient for use in rooms with high ceilings
- Decrease of temperature variation by automatic fan speed selection or freely selectable 3-step fan speed.
- Improved comfort as a result of better airflow distribution from the vertical out blow which allows manual adjustment of air outlet blades at the top of the unit. Selectable horizontal out blow to better suit the layout of the room (via BRC1E52).
- Improved efficiency by adoption of the DC fan motor.
- No optional adapter needed for DIII-connection, link your unit into the wider building management system.

1



Home leave operation



Fan only



Auto cooling-heating changeover



Vertical auto swing



Fan speed steps



Dry programme



Air filter



Weekly timer



Wired remote control



Centralised control



Auto-restart



Self diagnosis

2 Specifications

2-1 Technical Specifications				FVQ71C	FVQ100C	FVQ125C	FVQ140C	
Power input	Cooling	Nom.	kW	0.117	0.238		0.276	
	Heating	Nom.	kW	0.117	0.238		0.276	
Casing	Colour			Fresh White				
Dimensions	Unit	Height/Width/Depth	mm	1,850/600/270	1,850/600/350			
	Packed unit	Height/Width/Depth	mm	1,996/732/389	1,996/732/469			
Weight	Unit		kg	39	47			
	Packed unit		kg	61	70			
Heat exchanger	Inside length		mm	476				
	Rows	Quantity		2	3			
	Fin pitch		mm	1.75				
	Passes	Quantity		6	10	11		
	Face area		m ²	0.40	0.22			
	Stages	Quantity		40	22			
	Empty tubeplate hole	Quantity		0	14	4		
	Fin	Type		Cross fin coil (multi louver fins and Hi-XSS tubes)				
Heat exchanger 2	Rows	Quantity		-	3			
	Fin pitch		mm	-	1.75			
	Face area		m ²	-	0.22			
	Stages	Quantity		-	22			
Fan	Type			Sirocco fan				
	Quantity			1				
	Air flow rate	Cooling	High	m ³ /min	18	28		30
			Nom.	m ³ /min	16	25	26	28
			Low	m ³ /min	14	22	24	26
	Heating	High	High	m ³ /min	18	28		30
			Nom.	m ³ /min	16	25	26	28
Low			m ³ /min	14	22	24	26	
Fan motor	Model			QS33A1AM				
	Speed	Steps		3				
	Output	High	W	64	152			
Sound power level	Cooling	/	dBA	55	62	63	65	
	Heating	/	dBA	55	62	63	65	
Sound pressure level	Cooling	High/Nom./Low	dBA	43/41/38	50/47/44	51/48/46	53/51/48	
	Heating	Super high/High/Nom./Low	dBA	-/43/41/38	-/50/47/44	-/51/48/46	-/53/51/48	
Refrigerant	Type			R-410A				
Piping connections	Liquid	Type/OD	mm	Flare connection/9.52				
	Gas	Type/OD	mm	Flare connection/15.9				
	Drain			I.D. 20/O.D. 26				
	Heat insulation			Foamed polystyrene / Foamed polyethylene				
Air filter	Type			Resin net with mold resistance				

- Standard Accessories : Dew proof material;
- Standard Accessories : Insulation for fitting;
- Standard Accessories : Hole protection rubber;
- Standard Accessories : Bush;
- Standard Accessories : Clamps;
- Standard Accessories : Cover;
- Standard Accessories : Remote control wiring;
- Standard Accessories : Installation pattern;
- Standard Accessories : Installation manual;
- Standard Accessories : Bracket for installation;
- Standard Accessories : Operation manual;
- Standard Accessories : Screws;

2 Specifications

2-2 Electrical Specifications			FVQ71C	FVQ100C	FVQ125C	FVQ140C
Power supply	Phase		1~			
	Frequency	Hz	50/60			
	Voltage	V	220-240/220			

2

3 Safety device settings

3 - 1 Safety Device Settings

FVQ-C

Safety devices		71	100	125	140
FVQ-C	Fuse	-	-	-	-
	Fan motor thermal fuse (°C)	-	-	-	-
	Fan motor thermal protector (°C)	-	-	-	-

4D013856M

4 Options

4 - 1 Options

4

FVQ-C

Name of option \ Model name	FVQ71~100~125~140C
Replacement long-life filter	KAFJ95L160
Central remote controller	DCS302CA51
Unified ON/OFF controller	DCS301BA51
Schedule timer	DST301BA51
I-touch controller	DCS601C51
Remote controller	BRC1E52A7 BRC1E51A7 BRC1D528
Adapter for wiring ※ 1	KRP1BA57
Wiring adapter for electrical appendices (2)	KRP4AA52
Installation box for adapter PCB	KRP4AA95

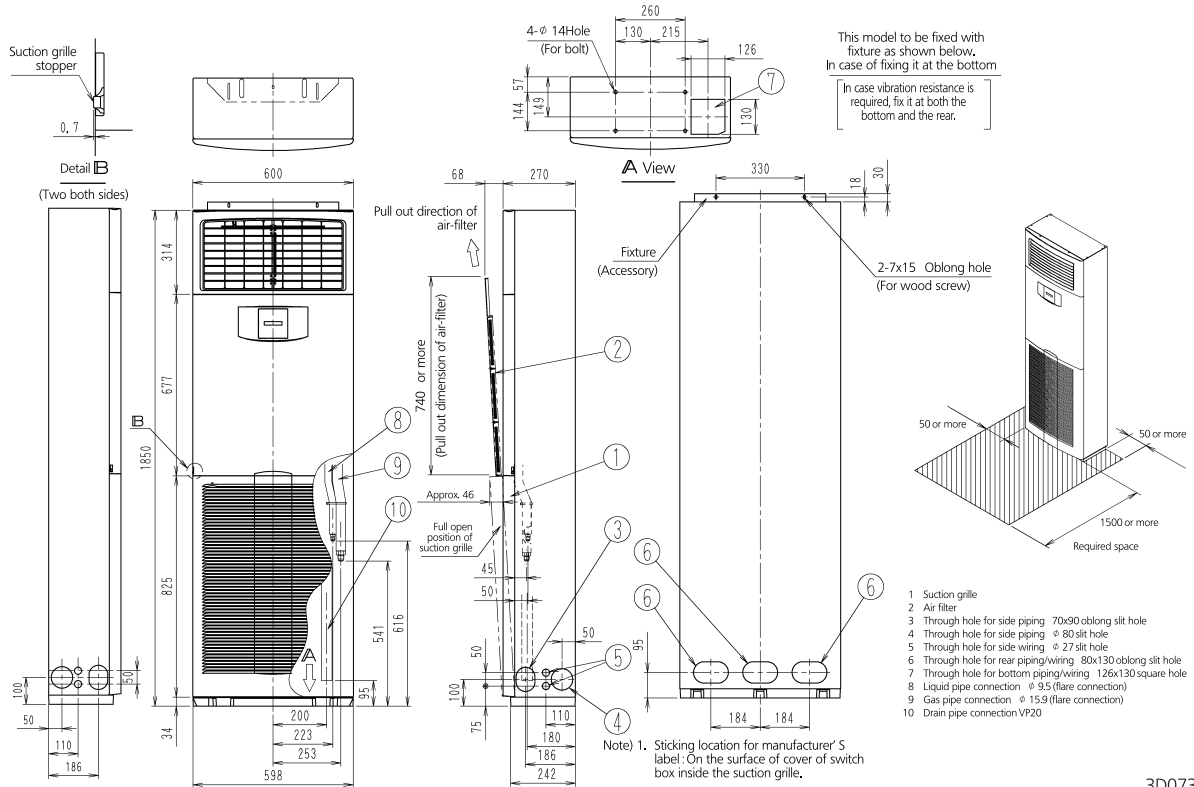
Note) ※ 1; Installation box for adaptor PCB (KRP4AA95) is necessary.

4D074483D

5 Dimensional drawings

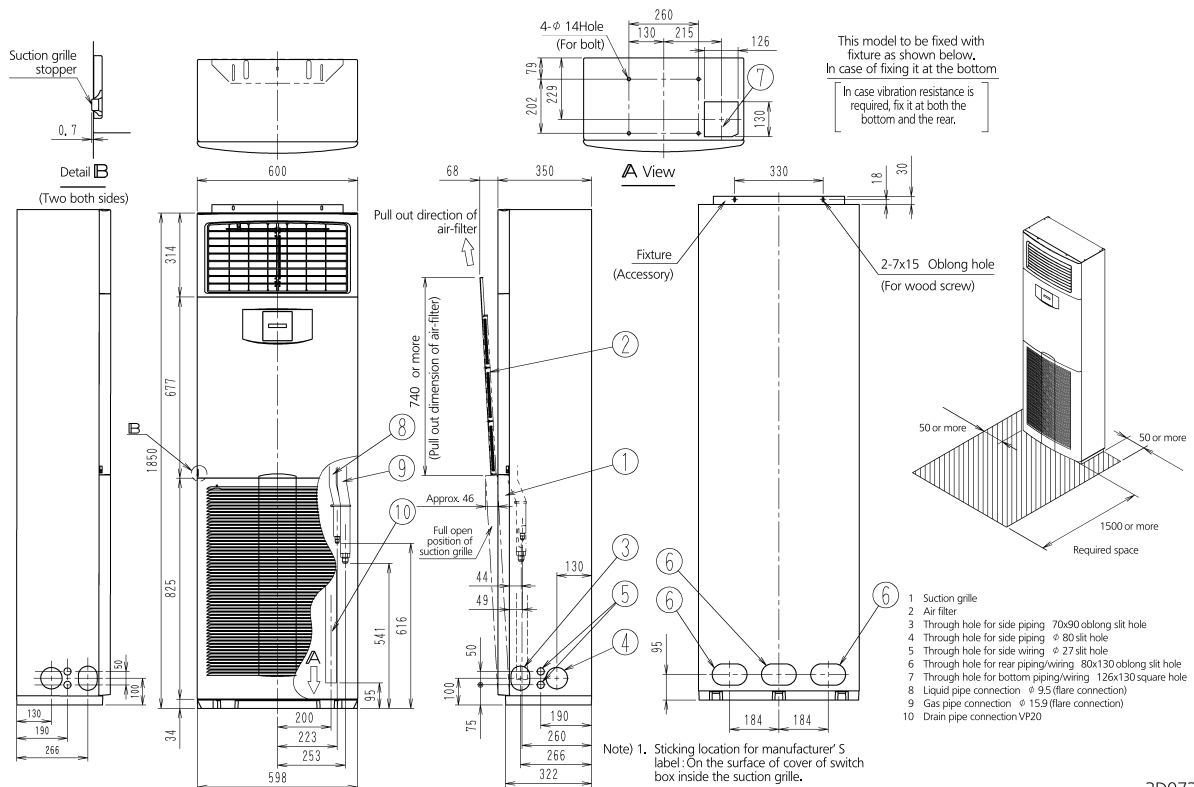
5 - 1 Dimensional Drawings

FVQ71C



3D073846A

FVQ100-125-140C

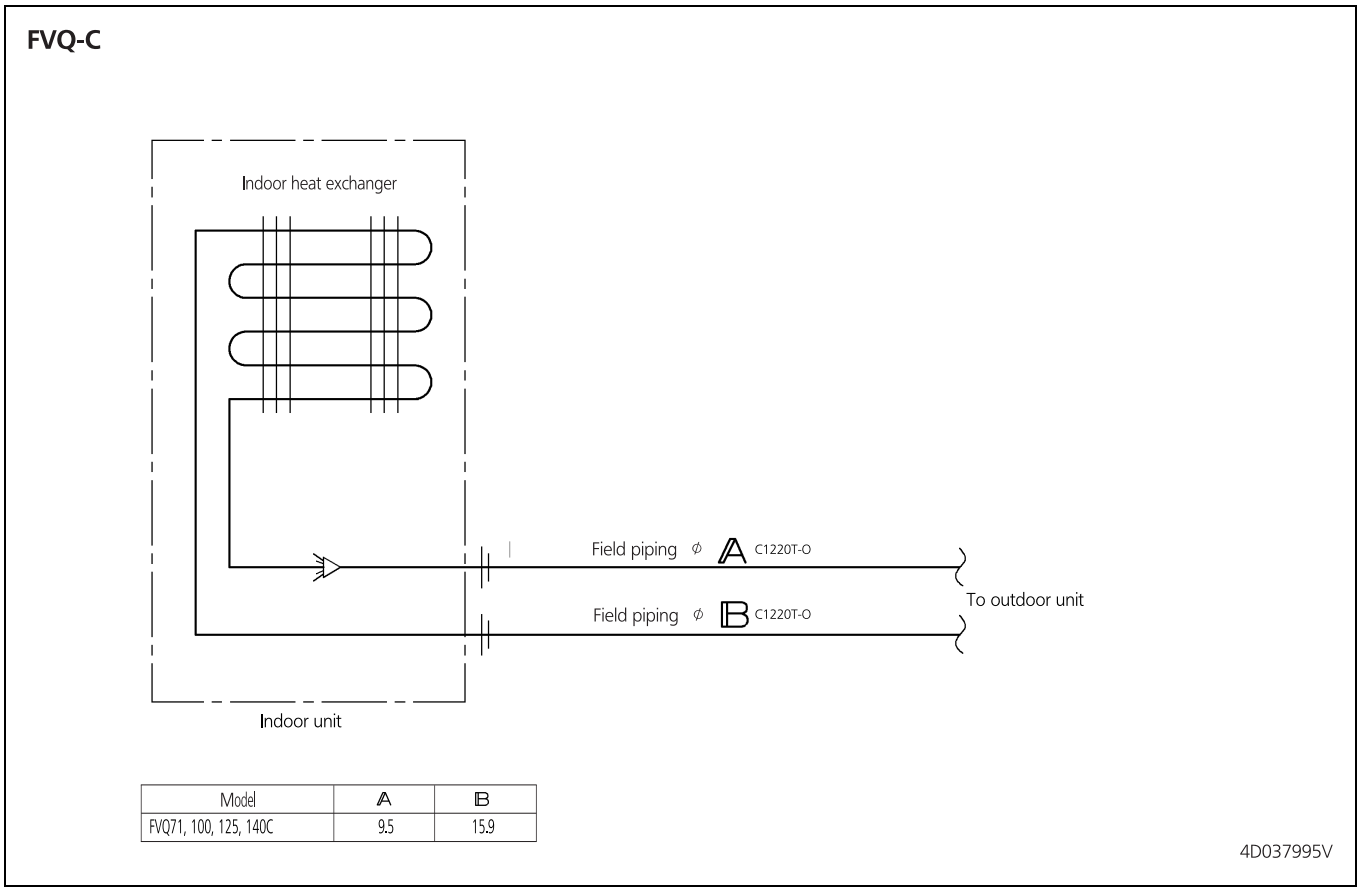


3D073847

6 Piping diagrams

6 - 1 Piping Diagrams

6

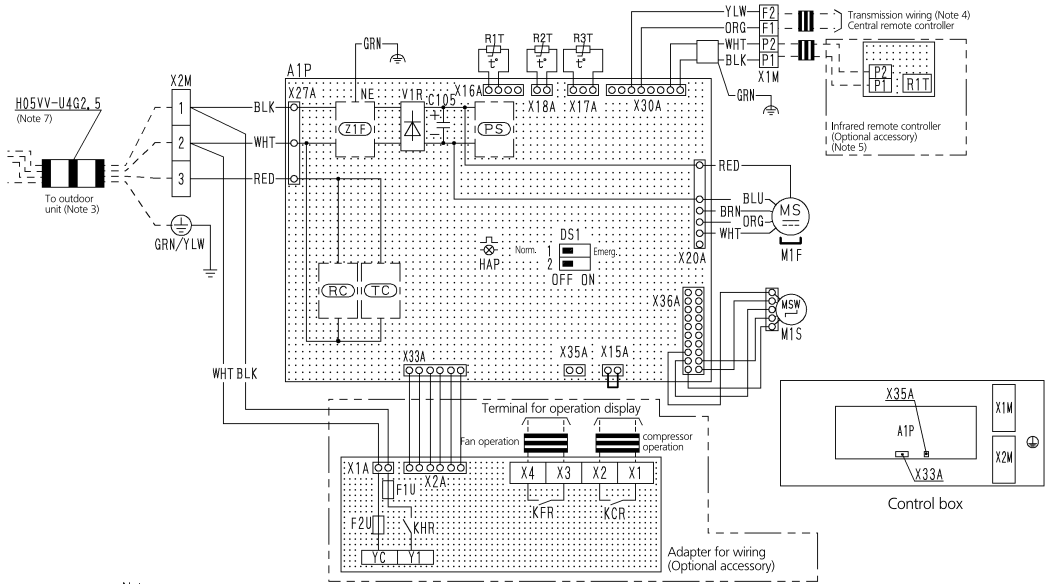


7 Wiring diagrams

7 - 1 Wiring Diagrams - Single Phase

FVQ-CVEB

Indoor unit	
A1P	Printed circuit board
C105	Capacitor
HAP	Flashing lamp (service monitor-green)
M1F	Motor (indoor fan)
M1S	Motor (swing flap)
R1T	Thermistor (air)
R2T-R3T	Thermistor (coil)
DS1	Dipswitch on PCB (emergency)
V1R	Diode bridge
X1M	Terminal block (Remote controller)
X2M	Terminal block (Transmission wiring)
Z1F	Noise filter
PS	Switching power supply
RC	Signal receiver circuit
TC	Signal transmission circuit
Wired remote controller	
R1T	Thermistor (air)
Connector for optional parts	
X3A	Connector (Adapter for wiring)
X35A	Connector (Power supply for adapter)
Adapter for wiring	
F1U	Fuse (5A, 250V)
F2U	Fuse (5A, 250V)
KCR	Magnetic relay
KFR	Magnetic relay
KHR	Magnetic relay



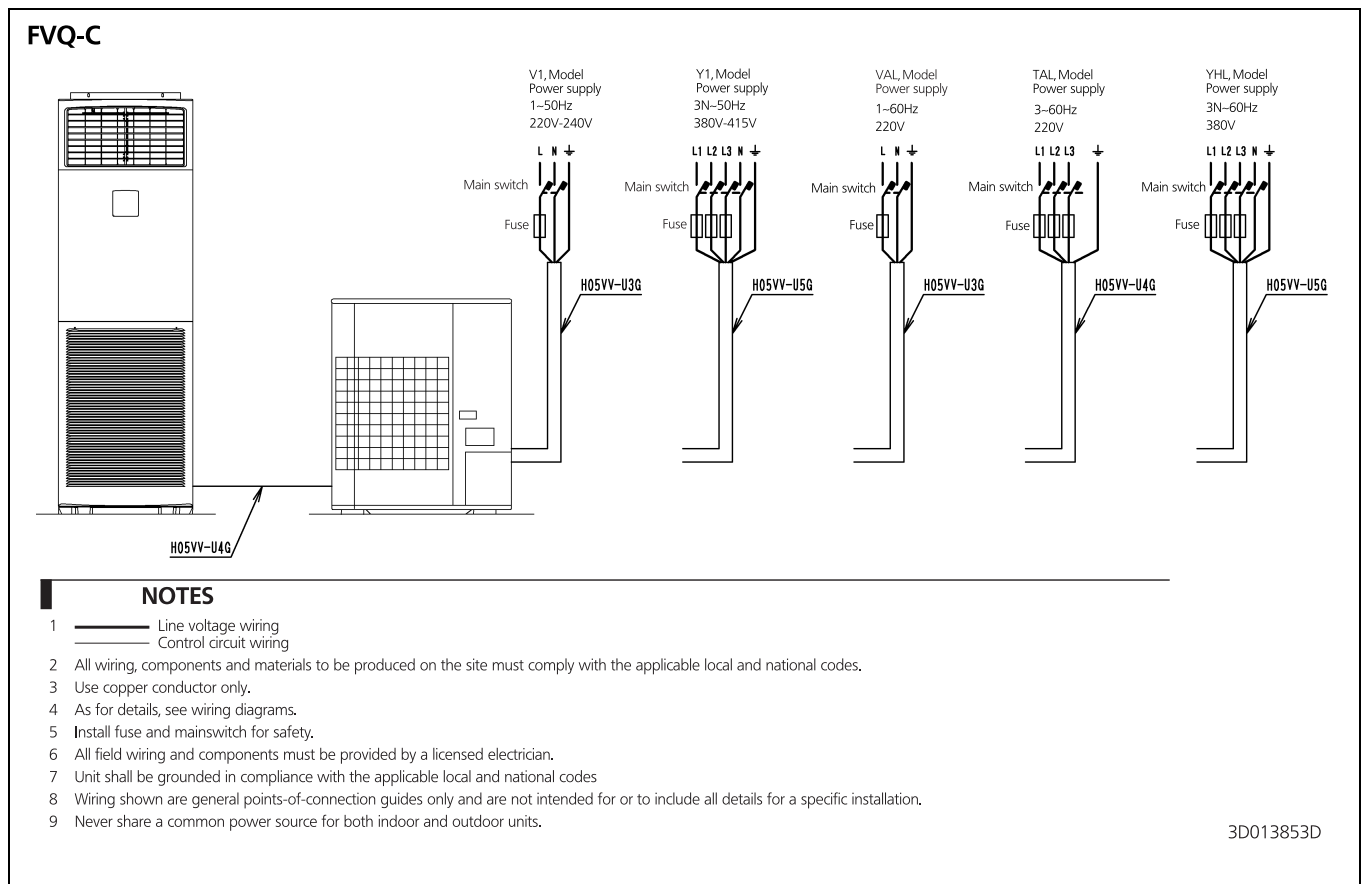
- Notes
- Terminal block Connector Short circuit connector
 - Field wiring
 - For the detail, see wiring diagram attached to outdoor unit.
 - In case using central remote controller, connect it to the unit in accordance with the attached installation manual.
 - In case of main/sub changeover, see the installation manual attached to remote controller.
 - Symbols shows as follows: BLK:Black RED:Red BLU:Blue WHT:White PNK:Pink YLW:Yellow GRY:Gray GRN:Green ORG:Orange BRN:Brown
 - Shows only in case of protected pipes, use HO7RN-F in case of no protection.

3D073234B

8 External connection diagrams

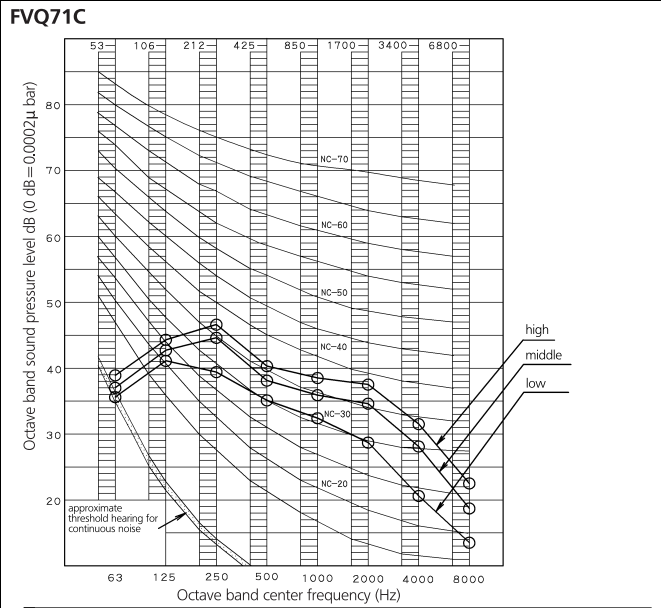
8 - 1 External Connection Diagrams

8



9 Sound data

9 - 1 Sound Pressure Spectrum



NOTES

1 Overall (dB)

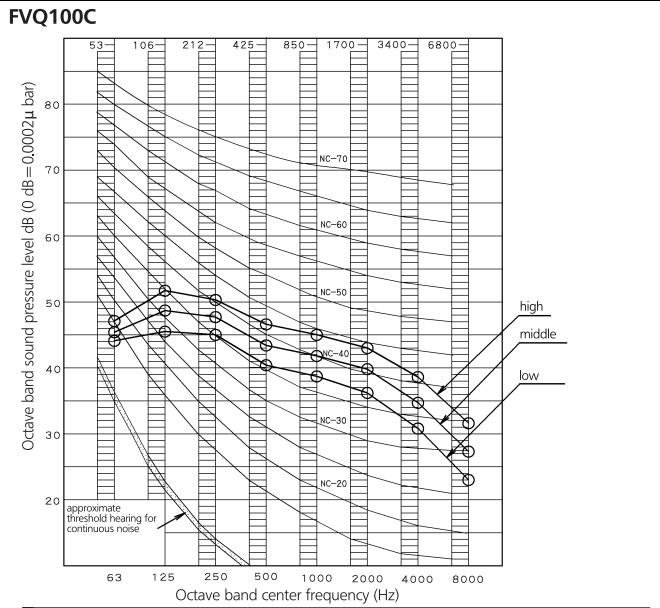
Scale	230V		
	high	middle	low
A	43	41	38
C	48	46	43

(BGN is already rectified)

2 Measuring place: Anechoic chamber
 3 Operation noise differs with operation and ambient conditions.
 4 Operating conditions: Power source: 230V 50Hz
 5 Cooling: Return air temperature: 27°C DB, 19°C WB
 Outdoor temperature: 35°C DB, 24°C WB
 6 Heating: Return air temperature: 20°C DB, 15°C WB
 Outdoor temperature: 7°C DB, 6°C WB

7 Location of microphone

4D073851A



NOTES

1 Overall (dB)

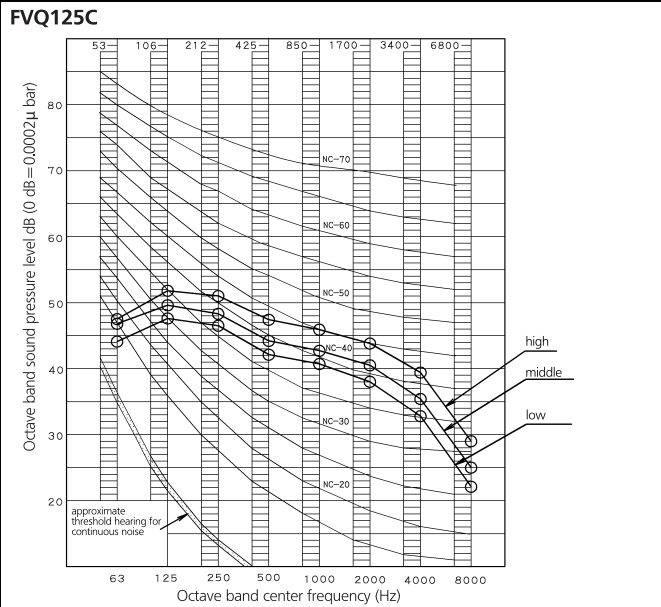
Scale	230V		
	high	middle	low
A	50	47	44
C	55	52	50

(BGN is already rectified)

2 Measuring place: Anechoic chamber
 3 Operation noise differs with operation and ambient conditions.
 4 Operating conditions: Power source: 230V 50Hz
 5 Cooling: Return air temperature: 27°C DB, 19°C WB
 Outdoor temperature: 35°C DB, 24°C WB
 6 Heating: Return air temperature: 20°C DB, 15°C WB
 Outdoor temperature: 7°C DB, 6°C WB

7 Location of microphone

4D073852



NOTES

1 Overall (dB)

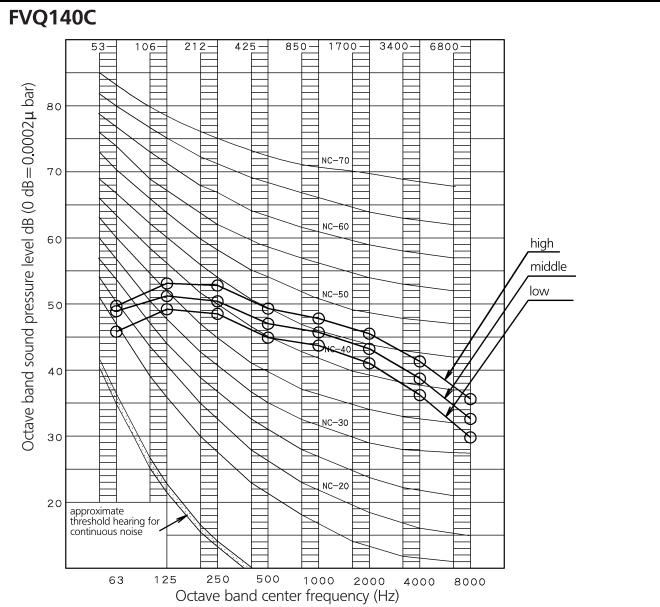
Scale	230V		
	high	middle	low
A	51	48	46
C	56	53	52

(BGN is already rectified)

2 Measuring place: Anechoic chamber
 3 Operation noise differs with operation and ambient conditions.
 4 Operating conditions: Power source: 230V 50Hz
 5 Cooling: Return air temperature: 27°C DB, 19°C WB
 Outdoor temperature: 35°C DB, 24°C WB
 6 Heating: Return air temperature: 20°C DB, 15°C WB
 Outdoor temperature: 7°C DB, 6°C WB

7 Location of microphone

4D073853



NOTES

1 Overall (dB)

Scale	230V		
	high	middle	low
A	53	51	48
C	58	56	54

(BGN is already rectified)

2 Measuring place: Anechoic chamber
 3 Operation noise differs with operation and ambient conditions.
 4 Operating conditions: Power source: 230V 50Hz
 5 Cooling: Return air temperature: 27°C DB, 19°C WB
 Outdoor temperature: 35°C DB, 24°C WB
 6 Heating: Return air temperature: 20°C DB, 15°C WB
 Outdoor temperature: 7°C DB, 6°C WB

7 Location of microphone

4D073854



Daikin Europe N.V. participates in the Eurovent Certification programme for Liquid Chilling Packages (LCP), Air handling units (AHU) and Fan coil units (FCU). Check on-going validity of certificate online: www.eurovent-certification.com or using: www.certiflash.com

The present leaflet is drawn up by way of information only and does not constitute an offer binding upon Daikin Europe N.V.. Daikin Europe N.V. has compiled the content of this leaflet to the best of its knowledge. No express or implied warranty is given for the completeness, accuracy, reliability or fitness for particular purpose of its content and the products and services presented therein. Specifications are subject to change without prior notice. Daikin Europe N.V. explicitly rejects any liability for any direct or indirect damage, in the broadest sense, arising from or related to the use and/or interpretation of this leaflet. All content is copyrighted by Daikin Europe N.V.

BARCODE

Daikin products are distributed by: