

DAIKIN

OPERATION MANUAL

使用说明书

VRV SYSTEM

According to GB4706. 32-96

Air Conditioners

符号 GB4706. 32-96

MODELS

Wall-mounted type

型号

挂壁型

FXA20LVE	FXA20LVEC (KFR-22G)
FXA25LVE	FXA25LVEC (KFR-28G)
FXA32LVE	FXA32LVEC (KFR-36G)
FXA40LVE	
FXA50LVE	
FXA63LVE	
FXAQ20MVE	
FXAQ25MVE	
FXAQ32MVE	
FXAQ40MVE	
FXAQ50MVE	
FXAQ63MVE	
FXAQ20MHV1	
FXAQ25MHV1	
FXAQ32MHV1	
FXAQ40MHV1	
FXAQ50MHV1	

English

Deutsch

Français

Español

Italiano

Ελληνικά

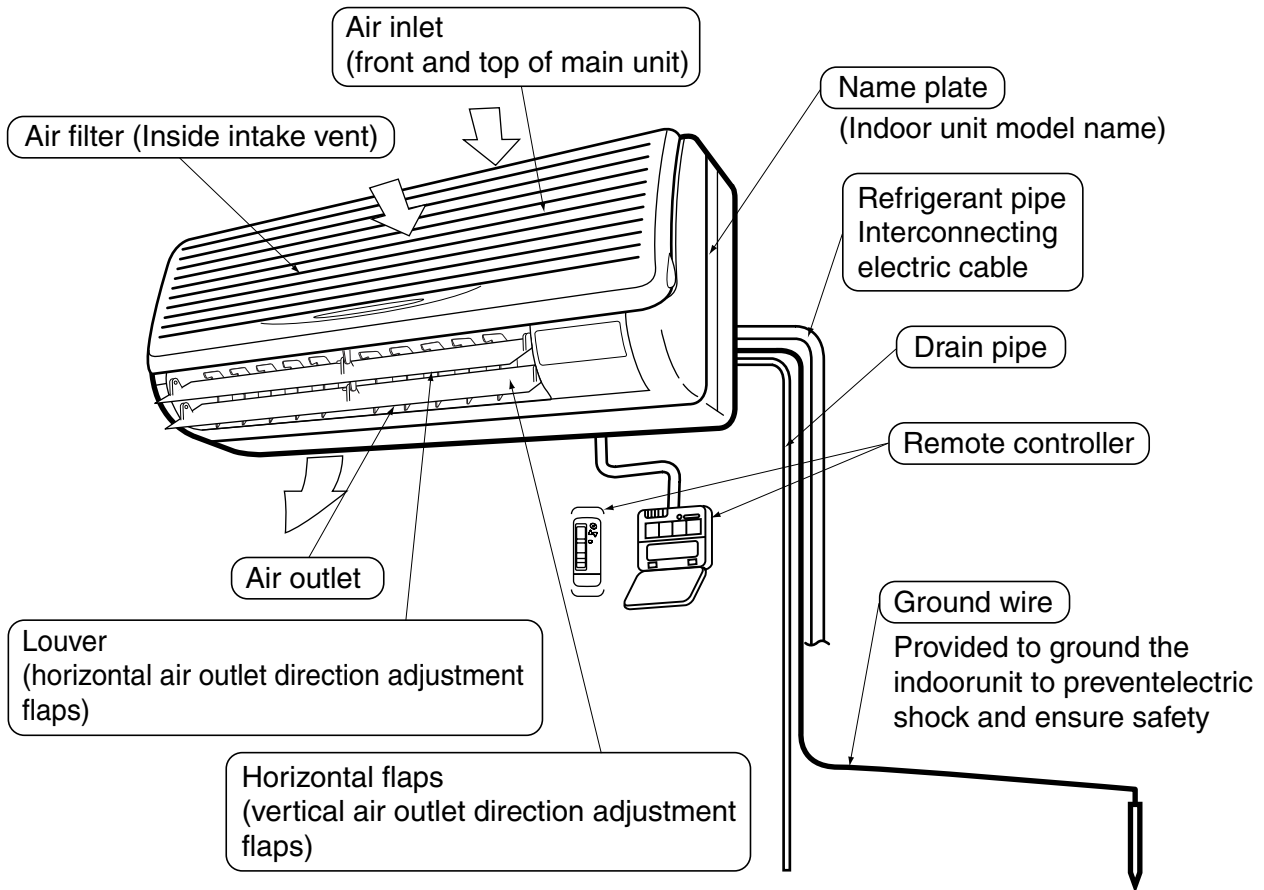
Nederlands

Portugues

Russian

Taiwanese

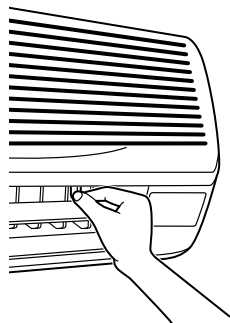
Chinese



Thank you for purchasing this Daikin air conditioner.
Carefully read this operation manual before using the air conditioner. It will tell you how to use the unit properly and help you if any trouble occurs. This manual explains about the indoor unit only. Use it along with the operation manual for the outdoor unit. After reading the manual, file it away for future reference.

HOW TO ADJUST THE HORIZONTAL FAN DIRECTION ANGLE

Hold the tabs on edge louvers (horizontal air outlet direction adjustment flaps) down slightly and adjust left and right to match the room conditions or your preference.



Stop the horizontal flaps at a position where you can hold the tabs and adjust it left and right.

MAINTENANCE (FOR SERVICE PERSONNEL)


ONLY A QUALIFIED SERVICE PERSON IS ALLOWED TO PERFORM MAINTENANCE IMPORTANT!

- **BEFORE OBTAINING ACCESS TO TERMINAL DEVICES, ALL POWER SUPPLY CIRCUITS MUST BE INTERRUPTED**
- To clean the air conditioner, be sure to stop operation, and turn the power switch off. Otherwise, an electric shock and injury may result.
- Do not wash the air conditioner with water. Doing so may result in an electric shock and fire.
- Be careful with a scaffold or staging. Caution must be exercised because of work at a high place.

NOTE

- Do not remove the air filter except when cleaning. This may cause breakage.

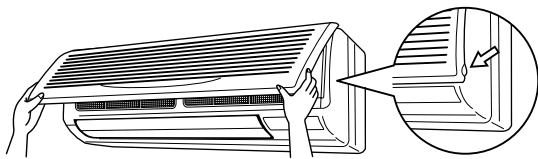
HOW TO CLEAN THE AIR FILTER

Clean the air filter when the display shows “” (TIME TO CLEAN AIR FILTER).

- It will display that it will operate for a set amount of time.
- Increase the frequency of cleaning if the unit is installed in a room where the air is extremely contaminated.

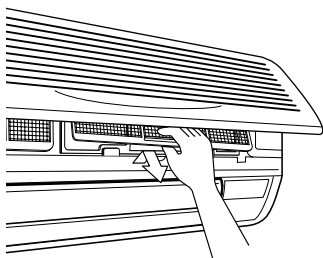
1. Open the front panel.

Place your fingers on the panel protrusions on the left and right sides of the main unit and open until the panel stops.



2. Pullout the air filter.

Push up the tab in the center of the air filter slightly then pull out in a downward direction.



3. Clean the air filter.

Use vacuum cleaner **A)** or wash the air filter with water **B)**.

A) Using a vacuum cleaner



B) Washing with water

When the air filter is very dirty, use soft brush and neutral detergent



Remove water and dry in the shade.

NOTES

- Do not wash it with hot water of more than 50°C, as doing so may result in discoloration and/or deformation.
- Do not expose it to fire, as doing so may result in burning.

4. Attach the air filter.

Once cleaning is done be sure to replace the air filter as it was.

5. Press the FILTER SIGN RESET button on the remote controller.

The "TIME TO CLEAN AIR FILTER" display vanishes.

HOW TO CLEAN THE AIR OUTLET AND EXTERIOR

- Clean with soft cloth.
- When it is difficult to remove stains, use water or neutral detergent.

NOTES

- Do not use gasoline, benzene, thinner, polishing powder, liquid insecticide. It may cause discoloring or warping.

- Do not use water or air of 50°C or higher for cleaning air filters.

HOW TO CLEAN THE FRONT PANEL

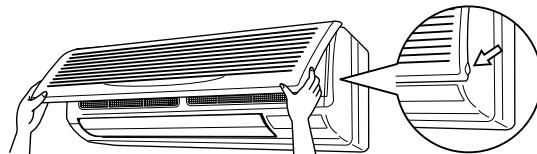
You can remove the front panel to clean it.

NOTES

- Hold the front panel firmly so that it does not fall.
- Do not use water over 50 °C, benzene, gasoline, thinner, or other volatile substances, polishing powder, or hard scrub brushes to clean the panel.
- Make sure the front panel is solidly in place.

1. Open the front panel.

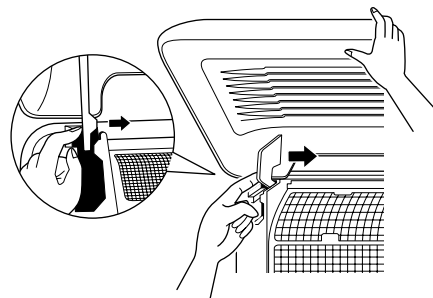
Place your fingers on the panel protrusions on the left and right sides of the main unit and open until the panel stops.



2. Remove the front panel.

Push the axes on either side of the front panel towards the center of the main unit and remove.

(You can also remove it by sliding the front panel either to the left or right and pulling it forward.)



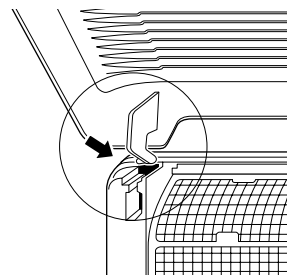
3. Clean the front panel.

- Wipe gently with a soft wet cloth.
- Only use neutral cleaning agents.
- After washing off, wipe off any excess water and dry in a shaded location.

4. Attach the front panel.

Set the keys of the front panel into the slots and push them in all the way.

Close the front panel slowly in this state.



DAIKIN INDUSTRIES, LTD.

Head office:
Umeda Center Bldg., 4-12, Nakazaki-Nishi 2-chome,
Kita-ku, Osaka, 530-8323 Japan

Tokyo office:
JR Shinagawa East Bldg., 18-1, Konan
2-chome, Minato-ku, Tokyo, 108-0075 Japan

DAIKIN EUROPE NV

Zandvoordestraat 300, B-8400 Oostende, Belgium

大金工業株式会社

總公司
日本大阪府大阪市北區中崎西二丁目4番12號
梅田中心大廈 郵政編碼 530-8323

東京分公司
日本東京都港區港南二丁目18番1號
JR品川東大廈 郵政編碼108-0075

大金工業株式会社

总公司
日本大阪府大阪市北區中崎西二丁目4番12号
梅田中心大廈 郵政編碼 530-8323

东京分公司
日本東京都港區港南二丁目18番1号
JR品川東大廈 郵政編碼108-0075