



technical data

**VRV<sup>®</sup> II** Systems

FXAQ-MVE

Wall mounted unit

# FXAQ-MVE

## Wall mounted unit

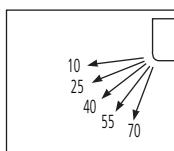


1	Features.....	2
2	Specifications	
	Technical specifications.....	3
	Electrical specifications.....	3
	Safety device settings.....	4
3	Accessories .....	4
4	Control systems .....	5
5	Capacity tables	
	Cooling capacity.....	6
	Heating capacity .....	8
6	Dimensions.....	10
7	Piping Diagram.....	12
8	Wiring Diagrams .....	13
9	Sound level.....	14
10	Installation	
	Installation example.....	15
	Service space.....	15
	Drain piping.....	16

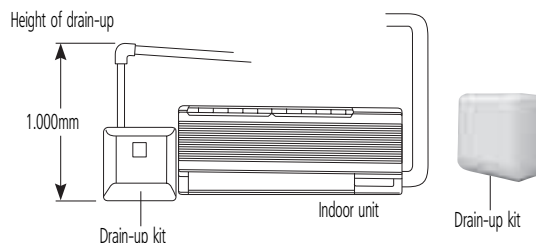
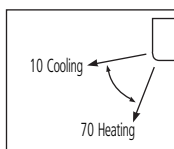
# 1 Features

## 1-1 Lowest operation sound level in the industry

- This super slim unit is stylish, unobtrusive and fits neatly on a wall
- Auto-swing mechanism ensures efficient air distribution via louvers that close automatically when the unit is switched off
- Comfortable air flow : the wide air discharge outlet distributes a comfortable air flow throughout the entire room
- 5 different discharge angles can be programmed via the remote control
- Very low sound pressure levels
- Both horizontal flaps and front panel can be easily removed and washed
- All maintenance operations can be carried out from the front of the unit
- Drain-up pump with 1,000mm lift available as accessory



- Discharge angle automatically returns to its previous position on restart (initial settings 10° for cooling and 70° for heating)



1



## 2 Specifications

### 2-1 Technical specifications

FXAQ-MVE				20	25	32	40	50	63
COOLING CAPACITY (1)		kW		2.2	2.8	3.6	4.5	5.6	7.1
HEATING CAPACITY (2)		kW		2.5	3.2	4.0	5.0	6.3	8.0
NOMINAL INPUT	Cooling	W		16	22	27	20	27	50
	Heating	W		24	27	32	20	32	60
DIMENSIONS		HxWxD		290x795x230			290x1,050x230		
WEIGHT		kg		11			14		
COLOUR				white (3.0Y8.5/0.5)					
SOUND LEVEL	Sound pressure	high	dB(A)	35	36	37	39	42	46
		low	dB(A)	29	29	29	34	36	39
	Sound power	dB(A)		*	*	*	*	*	*
FAN	Air flow rate	high	m <sup>3</sup> /h	450	480	540	720	900	1,140
		low	m <sup>3</sup> /h	270	300	330	540	720	840
	Type	cross flow fan							
	Motor output	W		40			43		
Drive		direct drive							
HEAT EXCHANGER	Rows x stages x fin pitch		mm	2x14x1.4					
	Face area		m <sup>2</sup>	0.161					
AIR FILTER		resin net (washable)							
REFRIGERANT CONTROL		electronic expansion valve							
TEMPERATURE CONTROL		microprocessor thermostat for cooling and heating							
PIPING CONNECTIONS	Liquid	flare	mm	ø 6.4					ø 9.5
	Gas	flare	mm	ø 12.7					ø 15.9
	Drain		mm						
Sound absorbing insulation material		foamed polystyrene / foamed polyethylene							

3D039370A

#### NOTES

- Nominal cooling capacities are based on:
    - Indoor temperature: 27°CDB, 19°CWB
    - Outdoor temperature: 35°CDB
    - Equivalent refrigerant piping: 5m (horizontal)
  - Nominal heating capacities are based on:
    - Indoor temperature: 20°CDB
    - Outdoor temperature: 7°CDB, 6°CWB
    - Equivalent refrigerant piping: 5m (horizontal)
  - Capacities are net including a deduction for cooling (an addition for heating) for indoor fan motor heat.
- \* data were not available at the time of publication

### 2-2 Electrical specifications

FXAQ-MVE				20	25	32	40	50	63
CURRENT	Minimum circuit amps (MCA)		A	0.3	0.4	0.4	0.4	0.4	0.6
	Maximum fuse amps (MFA) (5)		A	15					
POWER SUPPLY		V1		1 ~, 50Hz, 220-240V					
VOLTAGE RANGE		Min ~ max		V 198/264					
INDOOR FAN MOTOR	Fan motor rated output		W	40			43		
	Full load amps (FLA)		A	0.2	0.3	0.3	0.3	0.3	0.5

4D034907C

#### NOTES

- Voltage range: units are suitable for use on electrical systems where voltage supplied to unit terminals is not below or above listed range limits.
- Maximum allowable voltage range variation between phases is 2%.
- MCA/MFA:  
MCA = 1.25 x FLA  
MFA ≤ 4 x FLA  
next lower standard fuse rating minimum 15A.
- Select wire size based on the MCA.
- Instead of a fuse, use a circuit breaker
- For more details concerning conditional connections, see <http://www.daikineurope.com/extranet>, select "Daikin Documentation" and select "conditional connection", "the requested product type" and "English" from the drop down lists, click the search button.  
Finally, click on the document title of your choice.

## 2 Specifications

### 2-3 Safety device settings

FXAQ-MVE	20	25	32	40	50	63
PC BOARD FUSE	250V 3A					

4D034906B

## 3 Accessories

FXAQ-MVE	20	25	32	40	50	63
DRAIN PUMP KIT	K-KDU572CVE					

ED39-226B

## 4 Control systems

### 4-1 Individual control systems

FXAQ-MVE	20	25	32	40	50	63
WIRED REMOTE CONTROL	BRC1D527					
INFRARED REMOTE CONTROL	Heat pump					
	Cooling only					
	BRC7E618					
	BRC7E619					

### 4-2 Centralised control systems

CENTRALISED REMOTE CONTROL	DCS302C51
UNIFIED ON/OFF CONTROL	DCS301B51
SCHEDULE TIMER	DST301B51

### 4-3 Others

WIRING ADAPTER FOR ELECTRICAL APPENDICES (1)	KRP2A51#
WIRING ADAPTER FOR ELECTRICAL APPENDICES (2)	KRP4A51#
INSTALLATION BOX FOR ADAPTER PCB (2) (3)	KRP4A93
REMOTE SENSOR	KRCS01-1
ELECTRICAL BOX WITH EARTH TERMINAL (3 BLOCKS)	KJB311A
ELECTRICAL BOX WITH EARTH TERMINAL (2 BLOCKS)	KJB212A
NOISE FILTER (FOR ELECTROMAGNETIC INTERFACE USE ONLY)	KEK26-1
EXTERNAL CONTROL ADAPTER FOR OUTDOOR UNITS (INSTALLATION ON INDOOR UNIT)	DTA104A61#

PCV0320

4

#### NOTES

- 1 Installation box is necessary for each adapter marked with #.
- 2 Up to 2 adapters can be fixed per installation box.
- 3 Only 1 installation box can be installed per indoor unit.

# 5 Capacity tables

## 5-1 Cooling capacity

TC: Total capacitykW – SHC: Sensible capacitykW

Unit size	Nominal capacity	Outdoor air temp.	Indoor air temperature													
			14.0WB		16.0WB		18.0WB		19.0WB		20.0WB		22.0WB		24.0WB	
			20.0DB		23.0DB		26.0DB		27.0DB		28.0DB		30.0DB		32.0DB	
°CDB		TC	SHC	TC	SHC	TC	SHC	TC	SHC	TC	SHC	TC	SHC	TC	SHC	
20	2.2	10.0	1.5	1.5	1.8	1.8	2.1	1.9	2.2	1.9	2.3	1.9	2.6	2.0	2.9	1.9
		12.0	1.5	1.5	1.8	1.8	2.1	1.9	2.2	1.9	2.3	1.9	2.6	2.0	2.9	1.9
		14.0	1.5	1.5	1.8	1.8	2.1	1.9	2.2	1.9	2.3	1.9	2.6	2.0	2.8	1.9
		16.0	1.5	1.5	1.8	1.8	2.1	1.9	2.2	1.9	2.3	1.9	2.6	2.0	2.8	1.9
		18.0	1.5	1.5	1.8	1.8	2.1	1.9	2.2	1.9	2.3	1.9	2.6	2.0	2.7	1.9
		20.0	1.5	1.5	1.8	1.8	2.1	1.9	2.2	1.9	2.3	1.9	2.6	2.0	2.7	1.9
		21.0	1.5	1.5	1.8	1.8	2.1	1.9	2.2	1.9	2.3	1.9	2.6	2.0	2.7	1.9
		23.0	1.5	1.5	1.8	1.8	2.1	1.9	2.2	1.9	2.3	1.9	2.6	1.9	2.6	1.9
		25.0	1.5	1.5	1.8	1.8	2.1	1.9	2.2	1.9	2.3	1.9	2.6	1.9	2.6	1.9
		27.0	1.5	1.5	1.8	1.8	2.1	1.9	2.2	1.9	2.3	1.9	2.5	1.9	2.6	1.8
		29.0	1.5	1.5	1.8	1.8	2.1	1.9	2.2	1.9	2.3	1.9	2.5	1.9	2.5	1.8
		31.0	1.5	1.5	1.8	1.8	2.1	1.9	2.2	1.9	2.3	1.9	2.4	1.9	2.5	1.8
		33.0	1.5	1.5	1.8	1.8	2.1	1.9	2.2	1.9	2.3	1.9	2.4	1.9	2.5	1.8
35.0	1.5	1.5	1.8	1.8	2.1	1.9	2.2	1.9	2.3	1.9	2.4	1.9	2.4	1.8		
37.0	1.5	1.5	1.8	1.8	2.1	1.9	2.2	1.9	2.3	1.9	2.3	1.8	2.4	1.7		
39.0	1.5	1.5	1.8	1.8	2.1	1.9	2.2	1.9	2.2	1.9	2.2	1.8	2.3	1.7		
25	2.8	10.0	1.9	1.8	2.3	2.0	2.6	2.2	2.8	2.2	3.0	2.2	3.4	2.3	3.7	2.3
		12.0	1.9	1.8	2.3	2.0	2.6	2.2	2.8	2.2	3.0	2.2	3.4	2.3	3.6	2.2
		14.0	1.9	1.8	2.3	2.0	2.6	2.2	2.8	2.2	3.0	2.2	3.4	2.3	3.6	2.3
		16.0	1.9	1.8	2.3	2.0	2.6	2.2	2.8	2.2	3.0	2.2	3.4	2.3	3.5	2.2
		18.0	1.9	1.8	2.3	2.0	2.6	2.2	2.8	2.2	3.0	2.2	3.4	2.3	3.5	2.2
		20.0	1.9	1.8	2.3	2.0	2.6	2.2	2.8	2.2	3.0	2.2	3.4	2.3	3.4	2.2
		21.0	1.9	1.8	2.3	2.0	2.6	2.2	2.8	2.2	3.0	2.2	3.4	2.3	3.4	2.2
		23.0	1.9	1.8	2.3	2.0	2.6	2.2	2.8	2.2	3.0	2.2	3.3	2.3	3.4	2.2
		25.0	1.9	1.8	2.3	2.0	2.6	2.2	2.8	2.2	3.0	2.2	3.3	2.2	3.3	2.2
		27.0	1.9	1.8	2.3	2.0	2.6	2.2	2.8	2.2	3.0	2.2	3.2	2.2	3.3	2.1
		29.0	1.9	1.8	2.3	2.0	2.6	2.2	2.8	2.2	3.0	2.2	3.2	2.2	3.2	2.1
		31.0	1.9	1.8	2.3	2.0	2.6	2.2	2.8	2.2	3.0	2.2	3.1	2.2	3.2	2.1
		33.0	1.9	1.8	2.3	2.0	2.6	2.2	2.8	2.2	3.0	2.2	3.1	2.2	3.1	2.1
35.0	1.9	1.8	2.3	2.0	2.6	2.2	2.8	2.2	3.0	2.2	3.0	2.2	3.1	2.1		
37.0	1.9	1.8	2.3	2.0	2.6	2.2	2.8	2.2	2.9	2.2	3.0	2.1	3.0	2.0		
39.0	1.9	1.8	2.3	2.0	2.6	2.2	2.8	2.2	2.9	2.2	2.9	2.1	3.0	2.0		
32	3.6	10.0	2.4	2.2	2.9	2.4	3.4	2.6	3.6	2.7	3.8	2.7	4.3	2.8	4.7	2.8
		12.0	2.4	2.2	2.9	2.4	3.4	2.6	3.6	2.7	3.8	2.7	4.3	2.8	4.7	2.8
		14.0	2.4	2.2	2.9	2.4	3.4	2.6	3.6	2.7	3.8	2.7	4.3	2.8	4.6	2.8
		16.0	2.4	2.2	2.9	2.4	3.4	2.6	3.6	2.7	3.8	2.7	4.3	2.8	4.6	2.8
		18.0	2.4	2.2	2.9	2.4	3.4	2.6	3.6	2.7	3.8	2.7	4.3	2.8	4.5	2.7
		20.0	2.4	2.2	2.9	2.4	3.4	2.6	3.6	2.7	3.8	2.7	4.3	2.8	4.4	2.7
		21.0	2.4	2.2	2.9	2.4	3.4	2.6	3.6	2.7	3.8	2.7	4.3	2.8	4.4	2.7
		23.0	2.4	2.2	2.9	2.4	3.4	2.6	3.6	2.7	3.8	2.7	4.2	2.8	4.3	2.7
		25.0	2.4	2.2	2.9	2.4	3.4	2.6	3.6	2.7	3.8	2.7	4.2	2.8	4.3	2.6
		27.0	2.4	2.2	2.9	2.4	3.4	2.6	3.6	2.7	3.8	2.7	4.1	2.7	4.2	2.6
		29.0	2.4	2.2	2.9	2.4	3.4	2.6	3.6	2.7	3.8	2.7	4.1	2.7	4.2	2.6
		31.0	2.4	2.2	2.9	2.4	3.4	2.6	3.6	2.7	3.8	2.7	4.0	2.7	4.1	2.6
		33.0	2.4	2.2	2.9	2.4	3.4	2.6	3.6	2.7	3.8	2.7	3.9	2.6	4.0	2.5
35.0	2.4	2.2	2.9	2.4	3.4	2.6	3.6	2.7	3.8	2.7	3.9	2.6	4.0	2.5		
37.0	2.4	2.2	2.9	2.4	3.4	2.6	3.6	2.7	3.7	2.6	3.8	2.6	3.9	2.5		
39.0	2.4	2.2	2.9	2.4	3.4	2.6	3.6	2.7	3.7	2.6	3.8	2.6	3.8	2.5		
40	4.5	10.0	3.0	2.9	3.6	3.3	4.2	3.7	4.5	3.5	4.8	3.6	5.4	3.6	5.9	3.6
		12.0	3.0	2.9	3.6	3.3	4.2	3.7	4.5	3.5	4.8	3.6	5.4	3.6	5.8	3.5
		14.0	3.0	2.9	3.6	3.3	4.2	3.7	4.5	3.5	4.8	3.6	5.4	3.6	5.8	3.5
		16.0	3.0	2.9	3.6	3.3	4.2	3.7	4.5	3.5	4.8	3.6	5.4	3.6	5.7	3.5
		18.0	3.0	2.9	3.6	3.3	4.2	3.7	4.5	3.5	4.8	3.6	5.4	3.6	5.6	3.4
		20.0	3.0	2.9	3.6	3.3	4.2	3.7	4.5	3.5	4.8	3.6	5.4	3.6	5.5	3.4
		21.0	3.0	2.9	3.6	3.3	4.2	3.7	4.5	3.5	4.8	3.6	5.4	3.6	5.5	3.4
		23.0	3.0	2.9	3.6	3.3	4.2	3.7	4.5	3.5	4.8	3.6	5.3	3.6	5.4	3.3
		25.0	3.0	2.9	3.6	3.3	4.2	3.7	4.5	3.5	4.8	3.6	5.2	3.6	5.3	3.3
		27.0	3.0	2.9	3.6	3.3	4.2	3.7	4.5	3.5	4.8	3.6	5.2	3.5	5.3	3.3
		29.0	3.0	2.9	3.6	3.3	4.2	3.7	4.5	3.5	4.8	3.6	5.1	3.5	5.2	3.2
		31.0	3.0	2.9	3.6	3.3	4.2	3.7	4.5	3.5	4.8	3.6	5.0	3.4	5.1	3.2
		33.0	3.0	2.9	3.6	3.3	4.2	3.7	4.5	3.5	4.8	3.6	4.9	3.4	5.0	3.1
35.0	3.0	2.9	3.6	3.3	4.2	3.7	4.5	3.5	4.7	3.6	4.9	3.4	5.0	3.1		
37.0	3.0	2.9	3.6	3.3	4.2	3.7	4.5	3.5	4.7	3.5	4.8	3.3	4.9	3.1		
39.0	3.0	2.9	3.6	3.3	4.2	3.7	4.5	3.5	4.6	3.5	4.7	3.3	4.8	3.0		

5

# 5 Capacity tables

## 5-1 Cooling capacity

TC: Total capacity;kW – SHC: Sensible capacity;kW

Unit size	Nominal capacity	Outdoor air temp.	Indoor air temperature													
			14.OWB		16.OWB		18.OWB		19.OWB		20.OWB		22.OWB		24.OWB	
			20.ODB		23.ODB		26.ODB		27.ODB		28.ODB		30.ODB		32.ODB	
			°CDB	TC	SHC	TC	SHC	TC	SHC	TC	SHC	TC	SHC	TC	SHC	TC
50	5.6	10.0	3.8	3.2	4.5	3.7	5.2	4.1	5.6	4.2	6.0	4.3	6.7	4.4	7.4	4.4
		12.0	3.8	3.2	4.5	3.7	5.2	4.1	5.6	4.2	6.0	4.3	6.7	4.4	7.3	4.3
		14.0	3.8	3.2	4.5	3.7	5.2	4.1	5.6	4.2	6.0	4.3	6.7	4.4	7.2	4.3
		16.0	3.8	3.2	4.5	3.7	5.2	4.1	5.6	4.2	6.0	4.3	6.7	4.4	7.1	4.3
		18.0	3.8	3.2	4.5	3.7	5.2	4.1	5.6	4.2	6.0	4.3	6.7	4.4	7.0	4.2
		20.0	3.8	3.2	4.5	3.7	5.2	4.1	5.6	4.2	6.0	4.3	6.7	4.4	6.9	4.2
		21.0	3.8	3.2	4.5	3.7	5.2	4.1	5.6	4.2	6.0	4.3	6.7	4.4	6.8	4.2
		23.0	3.8	3.2	4.5	3.7	5.2	4.1	5.6	4.2	6.0	4.3	6.6	4.4	6.7	4.1
		25.0	3.8	3.2	4.5	3.7	5.2	4.1	5.6	4.2	6.0	4.3	6.5	4.3	6.6	4.1
		27.0	3.8	3.2	4.5	3.7	5.2	4.1	5.6	4.2	6.0	4.3	6.4	4.3	6.6	4.0
		29.0	3.8	3.2	4.5	3.7	5.2	4.1	5.6	4.2	6.0	4.3	6.3	4.2	6.5	4.0
		31.0	3.8	3.2	4.5	3.7	5.2	4.1	5.6	4.2	6.0	4.3	6.2	4.2	6.4	3.9
		33.0	3.8	3.2	4.5	3.7	5.2	4.1	5.6	4.2	6.0	4.3	6.1	4.2	6.3	3.9
		35.0	3.8	3.2	4.5	3.7	5.2	4.1	5.6	4.2	5.9	4.3	6.0	4.1	6.2	3.8
		37.0	3.8	3.2	4.5	3.7	5.2	4.1	5.6	4.2	5.8	4.3	5.9	4.1	6.1	3.8
		39.0	3.8	3.2	4.5	3.7	5.2	4.1	5.6	4.2	5.7	4.2	5.8	4.0	6.0	3.8
		63	7.1	10.0	4.8	4.1	5.7	4.6	6.6	5.1	7.1	5.3	7.6	5.4	8.5	5.6
12.0	4.8			4.1	5.7	4.6	6.6	5.1	7.1	5.3	7.6	5.4	8.5	5.6	9.2	5.3
14.0	4.8			4.1	5.7	4.6	6.6	5.1	7.1	5.3	7.6	5.4	8.5	5.6	9.1	5.2
16.0	4.8			4.1	5.7	4.6	6.6	5.1	7.1	5.3	7.6	5.4	8.5	5.6	9.0	5.2
18.0	4.8			4.1	5.7	4.6	6.6	5.1	7.1	5.3	7.6	5.4	8.5	5.6	8.8	5.2
20.0	4.8			4.1	5.7	4.6	6.6	5.1	7.1	5.3	7.6	5.4	8.5	5.6	8.7	5.1
21.0	4.8			4.1	5.7	4.6	6.6	5.1	7.1	5.3	7.6	5.4	8.5	5.6	8.7	5.1
23.0	4.8			4.1	5.7	4.6	6.6	5.1	7.1	5.3	7.6	5.4	8.4	5.5	8.5	5.0
25.0	4.8			4.1	5.7	4.6	6.6	5.1	7.1	5.3	7.6	5.4	8.3	5.5	8.4	5.0
27.0	4.8			4.1	5.7	4.6	6.6	5.1	7.1	5.3	7.6	5.4	8.1	5.4	8.3	4.9
29.0	4.8			4.1	5.7	4.6	6.6	5.1	7.1	5.3	7.6	5.4	8.0	5.4	8.2	4.9
31.0	4.8			4.1	5.7	4.6	6.6	5.1	7.1	5.3	7.6	5.4	7.9	5.3	8.1	4.8
33.0	4.8			4.1	5.7	4.6	6.6	5.1	7.1	5.3	7.6	5.4	7.8	5.2	7.9	4.8
35.0	4.8			4.1	5.7	4.6	6.6	5.1	7.1	5.3	7.5	5.4	7.7	5.2	7.8	4.7
37.0	4.8			4.1	5.7	4.6	6.6	5.1	7.1	5.3	7.4	5.3	7.5	5.1	7.7	4.7
39.0	4.8			4.1	5.7	4.6	6.6	5.1	7.1	5.3	7.2	5.3	7.4	5.1	7.6	4.6



# 5 Capacity tables

## 5-2 Heating capacity

Unit Size	Nominal capacity	Outdoor air temperature		Indoor air temperature °CDB					
				16.0	18.0	20.0	21.0	22.0	24.0
		°CDB	°CWB	kW	kW	kW	kW	kW	kW
20	2.5	-19.8	-20.0	1.5	1.5	1.5	1.5	1.5	1.5
		-18.8	-19.0	1.5	1.5	1.5	1.5	1.5	1.5
		-16.7	-17.0	1.6	1.6	1.6	1.6	1.6	1.6
		-14.7	-15.0	1.7	1.7	1.7	1.7	1.7	1.7
		-12.6	-13.0	1.8	1.8	1.8	1.8	1.8	1.8
		-10.5	-11.0	1.9	1.9	1.9	1.9	1.9	1.9
		-9.5	-10.0	1.9	1.9	1.9	1.9	1.9	1.9
		-8.5	-9.1	2.0	2.0	1.9	1.9	1.9	1.9
		-7.0	-7.6	2.0	2.0	2.0	2.0	2.0	2.0
		-5.0	-5.6	2.1	2.1	2.1	2.1	2.1	2.1
		-3.0	-3.7	2.2	2.2	2.2	2.2	2.2	2.2
		0.0	-0.7	2.3	2.3	2.3	2.3	2.3	2.3
		3.0	2.2	2.5	2.5	2.4	2.4	2.3	2.2
		5.0	4.1	2.5	2.5	2.5	2.4	2.3	2.2
		7.0	6.0	2.6	2.6	2.5	2.4	2.3	2.2
		9.0	7.9	2.7	2.7	2.5	2.4	2.3	2.2
11.0	9.8	2.8	2.7	2.5	2.4	2.3	2.2		
13.0	11.8	2.8	2.7	2.5	2.4	2.3	2.2		
15.0	13.7	2.8	2.7	2.5	2.4	2.3	2.2		
25	3.2	-19.8	-20.0	1.9	1.9	1.9	1.9	1.9	1.9
		-18.8	-19.0	1.9	1.9	1.9	1.9	1.9	1.9
		-16.7	-17.0	2.1	2.1	2.0	2.0	2.0	2.0
		-14.7	-15.0	2.2	2.2	2.2	2.2	2.2	2.1
		-12.6	-13.0	2.3	2.3	2.3	2.3	2.3	2.3
		-10.5	-11.0	2.4	2.4	2.4	2.4	2.4	2.4
		-9.5	-10.0	2.5	2.4	2.4	2.4	2.4	2.4
		-8.5	-9.1	2.5	2.5	2.5	2.5	2.5	2.5
		-7.0	-7.6	2.6	2.6	2.6	2.6	2.6	2.6
		-5.0	-5.6	2.7	2.7	2.7	2.7	2.7	2.7
		-3.0	-3.7	2.8	2.8	2.8	2.8	2.8	2.8
		0.0	-0.7	3.0	3.0	3.0	3.0	3.0	2.8
		3.0	2.2	3.1	3.1	3.1	3.1	3.0	2.8
		5.0	4.1	3.3	3.2	3.2	3.1	3.0	2.8
		7.0	6.0	3.4	3.4	3.2	3.1	3.0	2.8
		9.0	7.9	3.5	3.4	3.2	3.1	3.0	2.8
11.0	9.8	3.6	3.4	3.2	3.1	3.0	2.8		
13.0	11.8	3.6	3.4	3.2	3.1	3.0	2.8		
15.0	13.7	3.6	3.4	3.2	3.1	3.0	2.8		
32	4.0	-19.8	-20.0	2.4	2.4	2.3	2.3	2.3	2.3
		-18.8	-19.0	2.4	2.4	2.4	2.4	2.4	2.4
		-16.7	-17.0	2.6	2.6	2.6	2.6	2.6	2.5
		-14.7	-15.0	2.7	2.7	2.7	2.7	2.7	2.7
		-12.6	-13.0	2.9	2.8	2.8	2.8	2.8	2.8
		-10.5	-11.0	3.0	3.0	3.0	3.0	3.0	3.0
		-9.5	-10.0	3.1	3.1	3.1	3.1	3.0	3.0
		-8.5	-9.1	3.1	3.1	3.1	3.1	3.1	3.1
		-7.0	-7.6	3.2	3.2	3.2	3.2	3.2	3.2
		-5.0	-5.6	3.4	3.4	3.4	3.4	3.4	3.4
		-3.0	-3.7	3.5	3.5	3.5	3.5	3.5	3.5
		0.0	-0.7	3.7	3.7	3.7	3.7	3.7	3.5
		3.0	2.2	3.9	3.9	3.9	3.9	3.7	3.5
		5.0	4.1	4.1	4.1	4.0	3.9	3.7	3.5
		7.0	6.0	4.2	4.2	4.0	3.9	3.7	3.5
		9.0	7.9	4.3	4.3	4.0	3.9	3.7	3.5
11.0	9.8	4.5	4.3	4.0	3.9	3.7	3.5		
13.0	11.8	4.5	4.3	4.0	3.9	3.7	3.5		
15.0	13.7	4.5	4.3	4.0	3.9	3.7	3.5		
40	5.0	-19.8	-20.0	3.0	2.9	2.9	2.9	2.9	2.9
		-18.8	-19.0	3.0	3.0	3.0	3.0	3.0	3.0
		-16.7	-17.0	3.2	3.2	3.2	3.2	3.2	3.2
		-14.7	-15.0	3.4	3.4	3.4	3.4	3.4	3.4
		-12.6	-13.0	3.6	3.6	3.6	3.5	3.5	3.5
		-10.5	-11.0	3.7	3.7	3.7	3.7	3.7	3.7
		-9.5	-10.0	3.8	3.8	3.8	3.8	3.8	3.8
		-8.5	-9.1	3.9	3.9	3.9	3.9	3.9	3.9
		-7.0	-7.6	4.0	4.0	4.0	4.0	4.0	4.0
		-5.0	-5.6	4.2	4.2	4.2	4.2	4.2	4.2
		-3.0	-3.7	4.4	4.4	4.4	4.4	4.4	4.4
		0.0	-0.7	4.7	4.6	4.6	4.6	4.6	4.4
		3.0	2.2	4.9	4.9	4.9	4.8	4.7	4.4
		5.0	4.1	5.1	5.1	5.0	4.8	4.7	4.4
		7.0	6.0	5.2	5.2	5.0	4.8	4.7	4.4
		9.0	7.9	5.4	5.3	5.0	4.8	4.7	4.4
11.0	9.8	5.6	5.3	5.0	4.8	4.7	4.4		
13.0	11.8	5.6	5.3	5.0	4.8	4.7	4.4		
15.0	13.7	5.6	5.3	5.0	4.8	4.7	4.4		

5

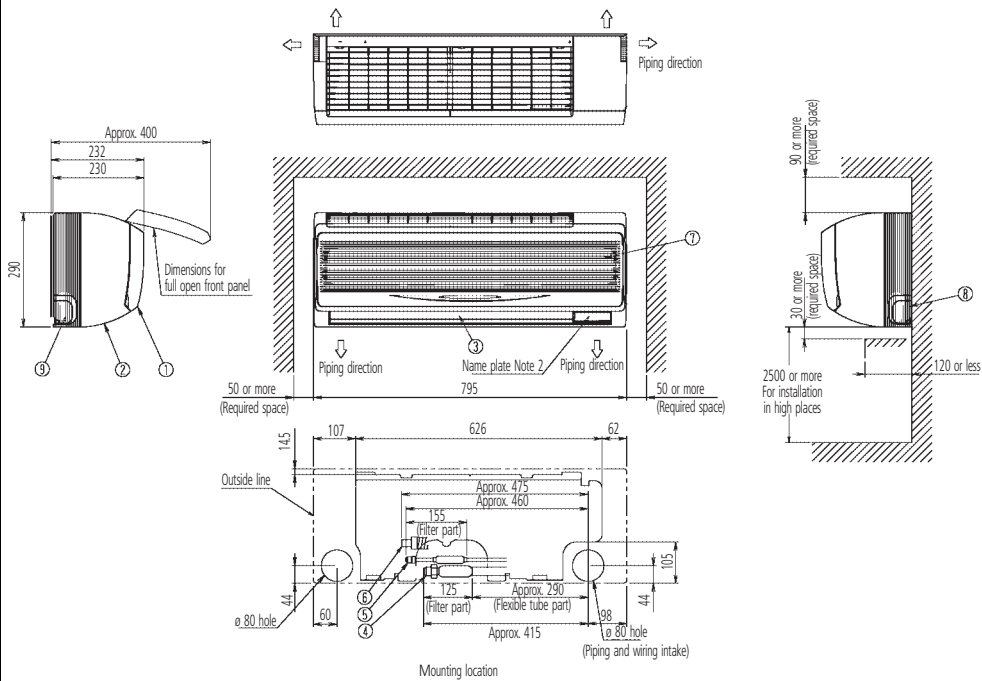
# 5 Capacity tables

## 5-2 Heating capacity

Unit Size	Nominal capacity	Outdoor air temperature		Indoor air temperature °CDB					
				16.0	18.0	20.0	21.0	22.0	24.0
		°CDB	°CWB	kW	kW	kW	kW	kW	kW
50	63	-19.8	-20.0	3.7	3.7	3.7	3.7	3.7	3.7
		-18.8	-19.0	3.8	3.8	3.8	3.8	3.8	3.8
		-16.7	-17.0	4.1	4.0	4.0	4.0	4.0	4.0
		-14.7	-15.0	4.3	4.3	4.3	4.2	4.2	4.2
		-12.6	-13.0	4.5	4.5	4.5	4.5	4.5	4.5
		-10.5	-11.0	4.7	4.7	4.7	4.7	4.7	4.7
		-9.5	-10.0	4.8	4.8	4.8	4.8	4.8	4.8
		-8.5	-9.1	4.9	4.9	4.9	4.9	4.9	4.9
		-7.0	-7.6	5.1	5.1	5.1	5.1	5.1	5.1
		-5.0	-5.6	5.3	5.3	5.3	5.3	5.3	5.3
		-3.0	-3.7	5.5	5.5	5.5	5.5	5.5	5.5
		0.0	-0.7	5.9	5.9	5.8	5.8	5.8	5.5
		3.0	2.2	6.2	6.2	6.2	6.1	5.9	5.5
		5.0	4.1	6.4	6.4	6.3	6.1	5.9	5.5
		7.0	6.0	6.6	6.6	6.3	6.1	5.9	5.5
		9.0	7.9	6.8	6.7	6.3	6.1	5.9	5.5
		11.0	9.8	7.0	6.7	6.3	6.1	5.9	5.5
13.0	11.8	7.1	6.7	6.3	6.1	5.9	5.5		
15.0	13.7	7.1	6.7	6.3	6.1	5.9	5.5		
63	80	-19.8	-20.0	4.7	4.7	4.7	4.7	4.7	4.7
		-18.8	-19.0	4.9	4.9	4.8	4.8	4.8	4.8
		-16.7	-17.0	5.1	5.1	5.1	5.1	5.1	5.1
		-14.7	-15.0	5.4	5.4	5.4	5.4	5.4	5.4
		-12.6	-13.0	5.7	5.7	5.7	5.7	5.7	5.7
		-10.5	-11.0	6.0	6.0	6.0	6.0	6.0	5.9
		-9.5	-10.0	6.1	6.1	6.1	6.1	6.1	6.1
		-8.5	-9.1	6.3	6.3	6.2	6.2	6.2	6.2
		-7.0	-7.6	6.5	6.5	6.4	6.4	6.4	6.4
		-5.0	-5.6	6.8	6.7	6.7	6.7	6.7	6.7
		-3.0	-3.7	7.0	7.0	7.0	7.0	7.0	7.0
		0.0	-0.7	7.5	7.4	7.4	7.4	7.4	7.0
		3.0	2.2	7.9	7.8	7.8	7.7	7.5	7.0
		5.0	4.1	8.1	8.1	8.0	7.7	7.5	7.0
		7.0	6.0	8.4	8.4	8.0	7.7	7.5	7.0
		9.0	7.9	8.7	8.5	8.0	7.7	7.5	7.0
		11.0	9.8	8.9	8.5	8.0	7.7	7.5	7.0
13.0	11.8	9.0	8.5	8.0	7.7	7.5	7.0		
15.0	13.7	9.0	8.5	8.0	7.7	7.5	7.0		

## 6 Dimensions

### FXAQ20-32MVE



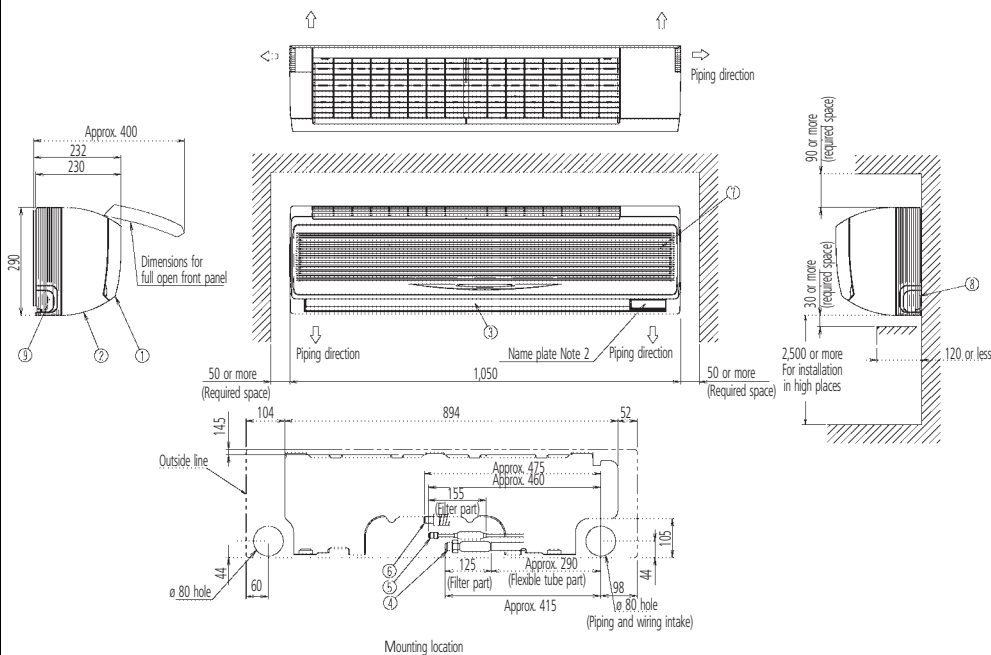
Nr	Part name	Description
1	Front panel	
2	Front grill	
3	Air outlet	
4	Gas pipe	ø 12.7 Flare connection
5	Liquid pipe	ø 6.4 Flare connection
6	Drain hose	VP13 (External dia. ø18)
7	Grounding terminal	M4
8	Right side pipe connection hole	
9	Left side pipe connection hole	

#### NOTES

- 1 Name plate location: right side surface of casing
- 2 In case of using an infrared remote control, this position will be a signal receiver. Refer to the drawing of an infrared remote control in detail.

3D034903B

### FXAQ40,50MVE



Nr	Part name	Description
1	Front panel	
2	Front grill	
3	Air outlet	
4	Gas pipe	ø 12.7 Flare connection
5	Liquid pipe	ø 6.4 Flare connection
6	Drain hose	VP13 (External dia. ø 18)
7	Grounding terminal	M4
8	Right side pipe connection hole	
9	Left side pipe connection hole	

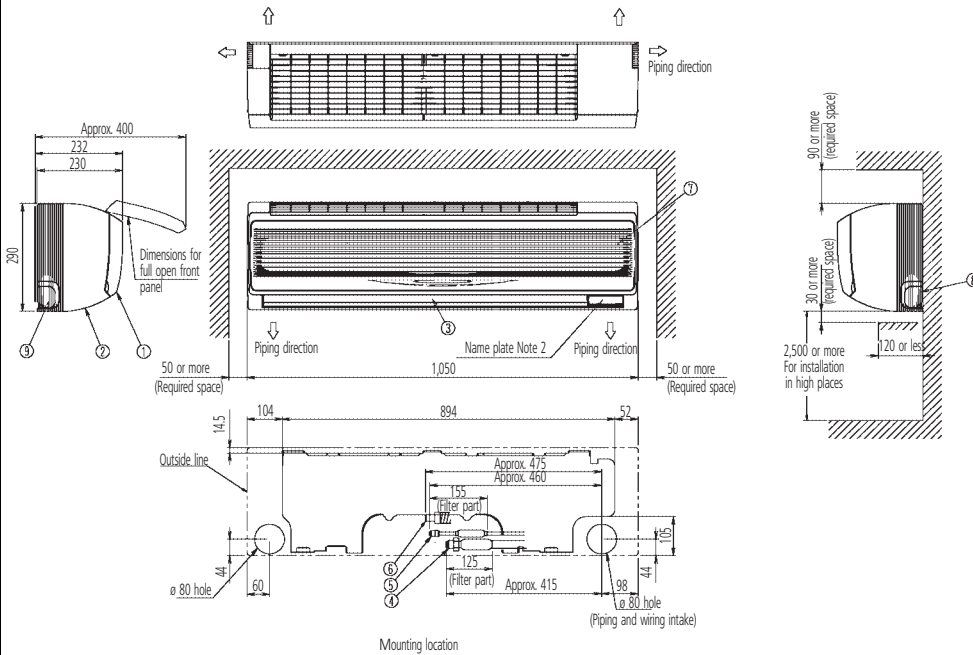
#### NOTES

- 1 Name plate location: right side surface of casing.
- 2 In case of using an infrared remote control, this position will be a signal receiver. Refer to the drawing of the infrared remote control in detail.

3D038539A

## 6 Dimensions

### FXAQ63MVE



Nr	Part name	Description
1	Front panel	
2	Front grill	
3	Air outlet	
4	Gas pipe	∅ 15.9 Flare connection
5	Liquid pipe	∅ 9.5 Flare connection
6	Drain hose	VP13
7	Grounding terminal	M4
8	Right side pipe connection hole	
9	Left side pipe connection hole	

#### NOTES

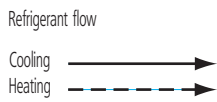
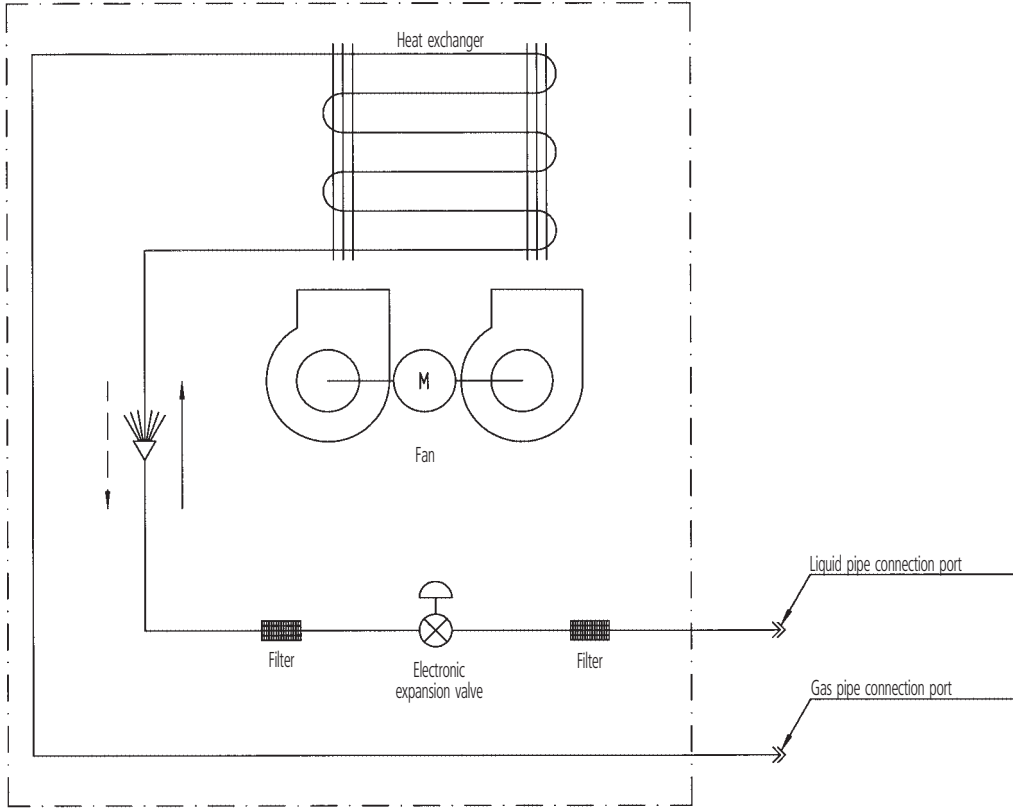
- 1 Name plate location: right side surface of casing.
- 2 In case of using an infrared remote control, this position will be a signal receiver. Refer to the drawing of the infrared remote control in detail.

3D038541A

# 7 Piping Diagram

7

FXAQ-MVE



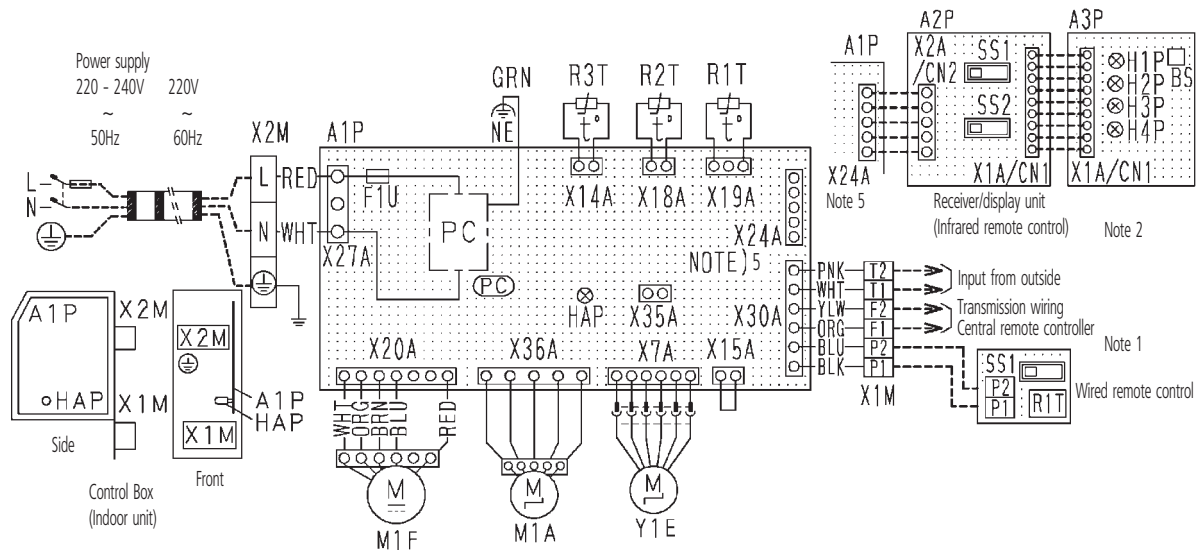
Piping connection diameters

Model	Gas	Liquid
FXAQ20,25,32,40,50MVE	ø12.7	ø6.4
FXAQ63MVE	ø15.9	ø9.5

- ⌄ Check valve
- ↔ Flare connection
- ⌄ Screw connection
- ⌄ Flange connection
- × Pinched pipe
- Spinned pipe

# 8 Wiring Diagrams

FXAQ-MVE



A1P	Printed circuit board	Y1E	Electronic expansion valve	SS1	Selector switch (Main/sub)
F1U	Fuse (Ⓢ, 250V, 3A)	PC	Power Circuit	SS2	Selector switch (Wireless address set)
HAP	Light emitting diode (Service monitor-green)	Receiver/display unit	(Attached to infrared remote control)	Wired remote control	
M1A	Motor (Swing flap)	A2P	Printed circuit board	R1T	Thermistor (Air)
M1F	Motor (Indoor fan)	A3P	Printed circuit board	SS1	Selector switch (Main/sub)
R1T	Thermistor (Air)	BS	Push button (On/off)	Connector for optional parts	
R2T	Thermistor (Coil liquid pipe)	H1P	Light emitting diode (On-red)	X15A	Connector (Float switch)
R3T	Thermistor (Coil gas pipe)	H2P	Light emitting diode (Timer green)	X35A	Connector (Group control adapter)
X1M	Terminal strip (Control)	H3P	Light emitting diode (Filter sign-red)		
X2M	Terminal strip (Power)	H4P	Light emitting diode (Defrost-orange)		

- : Field wiring
  - : Terminal
  - ⊞ : Connector
  - ⊞ : Connector
- COLORS : RED : Red      WHT : White      YLW : Yellow  
 BLK : Black      BLU : Blue      BRN : Brown  
 PNK : Pink      ORG : Orange      GRN : Green

**NOTES**

- 1 In case of using centralised remote control, connect it to the unit in accordance with the attached installation manual.
- 2 When connecting the input wires from outside, forced off or ON/OFF control operation can be selected by remote control. In details, refer to the installation manual attached the unit.
- 3 Remote control model varies according to the combination system. Consult engineering data and catalogues, etc. before connecting.
- 4 Confirm the method of setting the selector switch (SS1, SS2) of wired remote control and infrared remote control by installation manual and engineering data, etc.
- 5 X24A is connected when the infrared remote control kit is being used.

# 9 Sound level

## 9-1 Sound level data

Model	Sound pressure level			Measuring location	Sound power level
	H	L			
FXAQ20MVE	35	29			*
FXAQ25MVE	36	29			*
FXAQ32MVE	37	29			*
FXAQ40MVE	39	34			*
FXAQ50MVE	42	36			*
FXAQ63MVE	46	39			*

**NOTES**

- 1 Reference acoustic pressure 0 dB = 20 Pa.
- 2 Measuring place: anechoic chamber.
- 3 Operating noise differs with operation and ambient conditions.

\*Data were not available at the time of publication

9

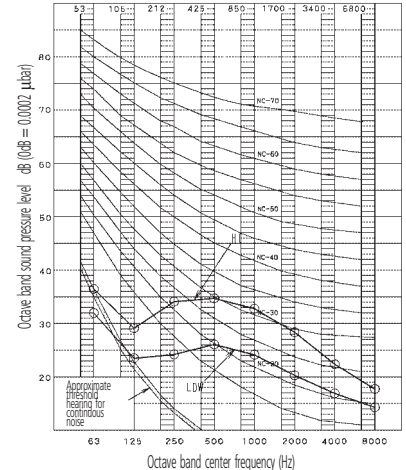
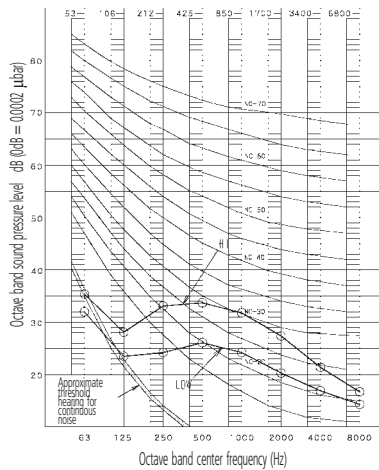
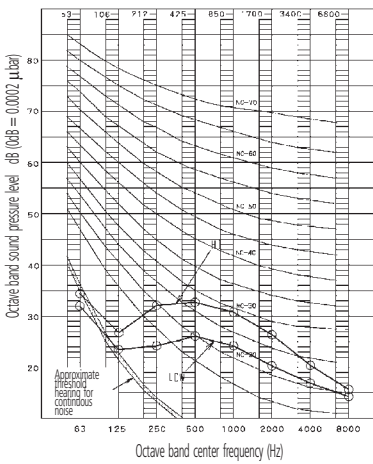
## 9-2 Sound pressure spectrum

FXAQ20MVE

4D037087A FXAQ25MVE

4D037088A FXAQ32MVE

4D037089A

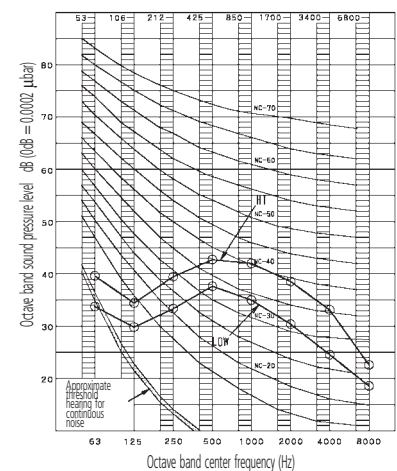
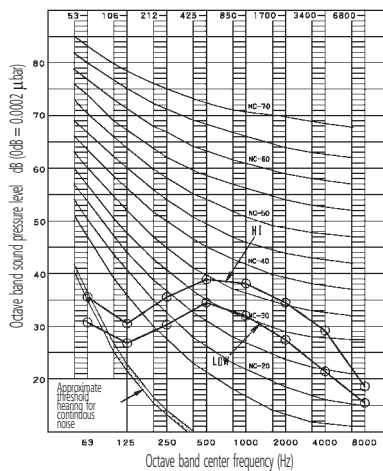
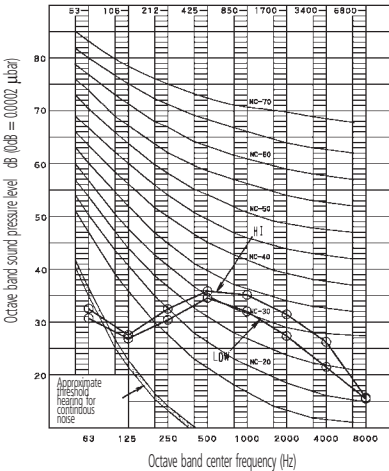


FXAQ40MVE

4D038513 FXAQ50MVE

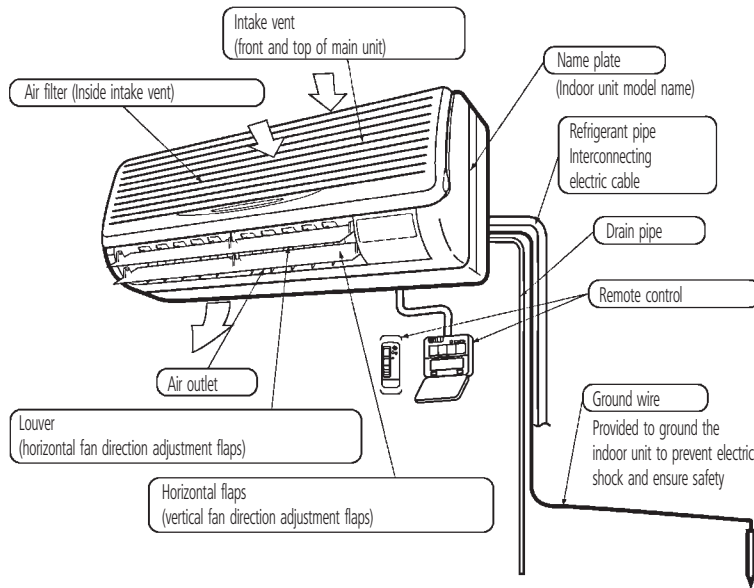
4D038514 FXAQ63MVE

4D038515



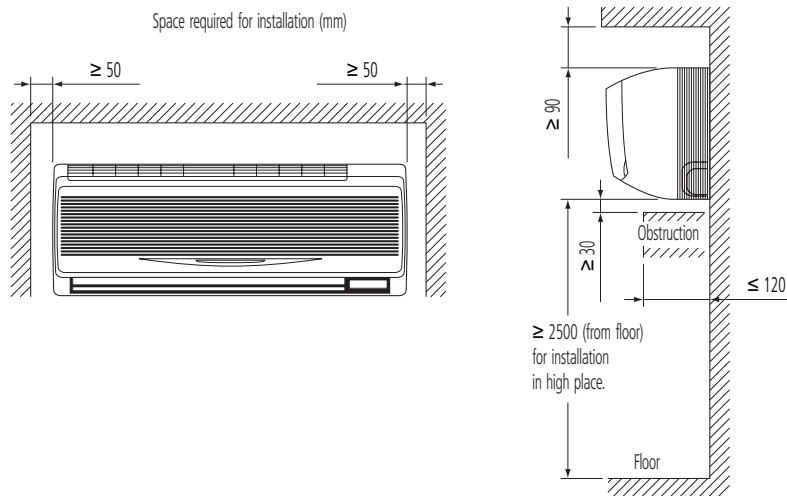
# 10 Installation

## 10-1 Installation example



## 10-2 Service space

- Select an installation site where the following conditions are fulfilled and that meets with your customer's approval.
  - In the upper space (including the back of the ceiling) of the indoor unit where there is no possible dripping of water from the refrigerant pipe, drain pipe, water pipe, etc.
  - Where the wall is strong enough to bear the indoor unit weight.
  - Where sufficient clearance for installation and maintenance can be ensured.
  - Where optimum air distribution can be ensured.
  - Where nothing blocks the air passage.
  - Where condensation can be properly drained.
  - Where the wall is not significantly tilted.
  - Where not exposed to combustible gases.
  - Where piping between indoor and outdoor units is possible within the allowable limit. (Refer to the installation manual of the outdoor unit.)
  - Keep the indoor and outdoor units, power cable and transmission wiring, at least 1 m from TVs and radios, to prevent distorted pictures and static. (Depending on the type and source of the electrical waves, static may be heard even when more than 1 m away.)
  - Install the indoor unit no less than 2.5 m above the floor. Where unavoidably lower, take what measures are necessary to keep hands out of the air inlet.



- Consider whether the location where the unit will be installed can support the full weight of the unit, and reinforce it with boards and beams, etc. if needed before proceeding with the installation. Also, reinforce the location to prevent vibration and noise before installing.
- The indoor unit may not be directly installed on the wall. Use the attached installation panel before installing the unit.

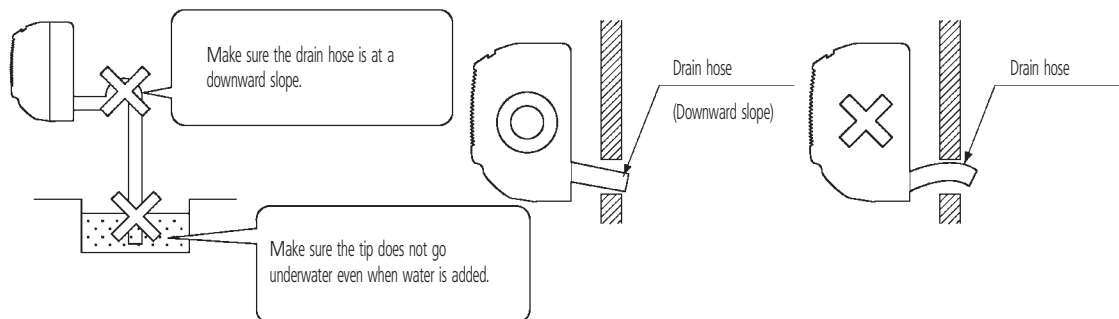


## 10 Installation

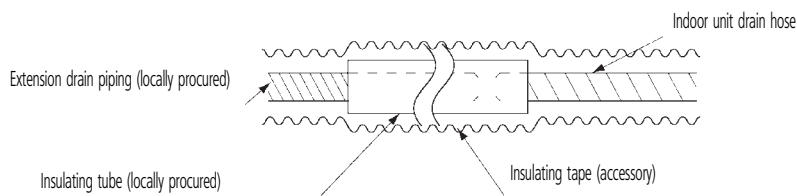
### 10-3 Drain piping

#### 1 Install the drain piping

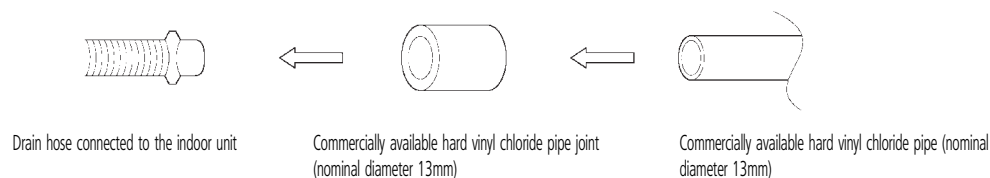
- The drain pipe should be short with a downward slope and should prevent the formation of air pockets.



- When extending the drain hose, use a commercially available drain extension hose, and be sure to insulate the extended section of the drain hose which is indoors.



- Make sure the diameter of the piping is the same as the piping (hard vinyl chloride, nominal diameter 13mm) or bigger.
- When directly connecting a hard vinyl chloride pipe joint (nominal diameter 13mm) to the drain hose connected to the indoor unit (i.e. for embedded piping, etc.), use a commercially available hard vinyl chloride pipe joint (nominal diameter 13mm).



# 2

## VRV II Systems



ISO14001 assures an effective environmental management system in order to help protect human health and the environment from the potential impact of our activities, products and services and to assist in maintaining and improving the quality of the environment.



Daikin Europe N.V. is approved by LRQA for its Quality Management System in accordance with the ISO9001 standard. ISO9001 pertains to quality assurance regarding design, development, manufacturing as well as to services related to the product.

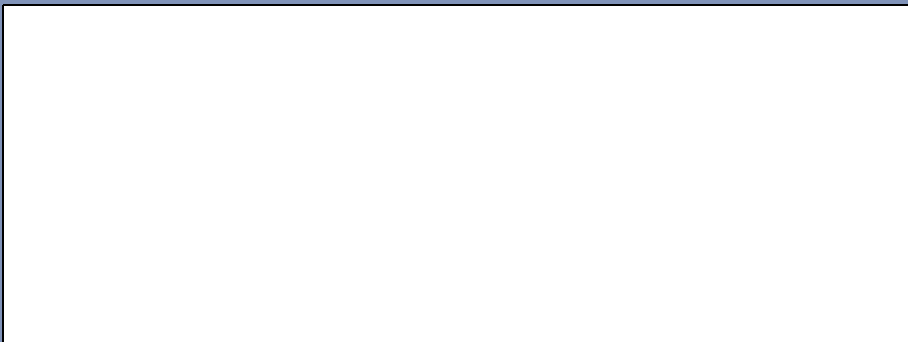


Daikin units comply with the European regulations that guarantee the safety of the product.

VRV products are not within the scope of the Eurovent certification programme.

Daikin equipment is designed for comfort applications. For use in other applications, please contact your local Daikin representative.

Specifications are subject to change without prior notice



### DAIKIN EUROPE N.V.

Zandvoordestraat 300  
B-8400 Ostend - Belgium  
[www.daikineurope.com](http://www.daikineurope.com)