

## 2-way blow ceiling mounted cassette

Thin, lightweight design installs easily in narrow corridors

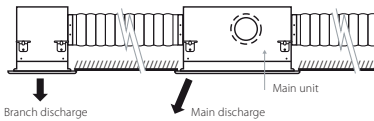
- › Depth of all units is 620mm, ideal for narrow spaces
- › Individual flap control: flexibility to suit every room layout without changing the location of the unit!
- › Reduced energy consumption thanks to specially developed small tube heat exchanger, DC fan motor and drain pump
- › Stylish unit blends easily with any interior. The flaps close entirely when the unit is not operating and there are no air intake grilles visible
- › Fresh air intake integrated in the same system thus reducing installation cost as no additional ventilation device is required

Fresh air intake opening in casing

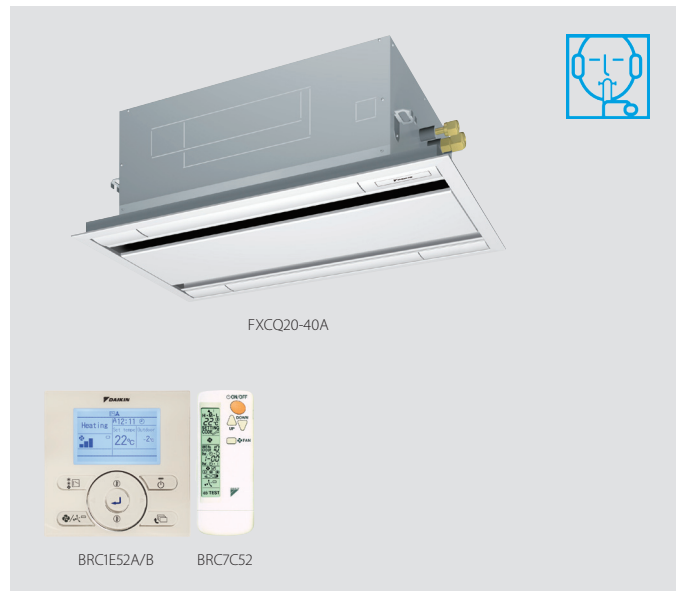
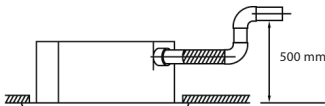


\* Brings in up to 10% of fresh air into the room

- › Optimum comfort guaranteed with automatic air flow adjustment to the required load
- › Maintenance operations can be performed by removing the front panel
- › Branch duct discharge allows to optimize air distribution in irregular shaped rooms or to supply air to small adjacent rooms



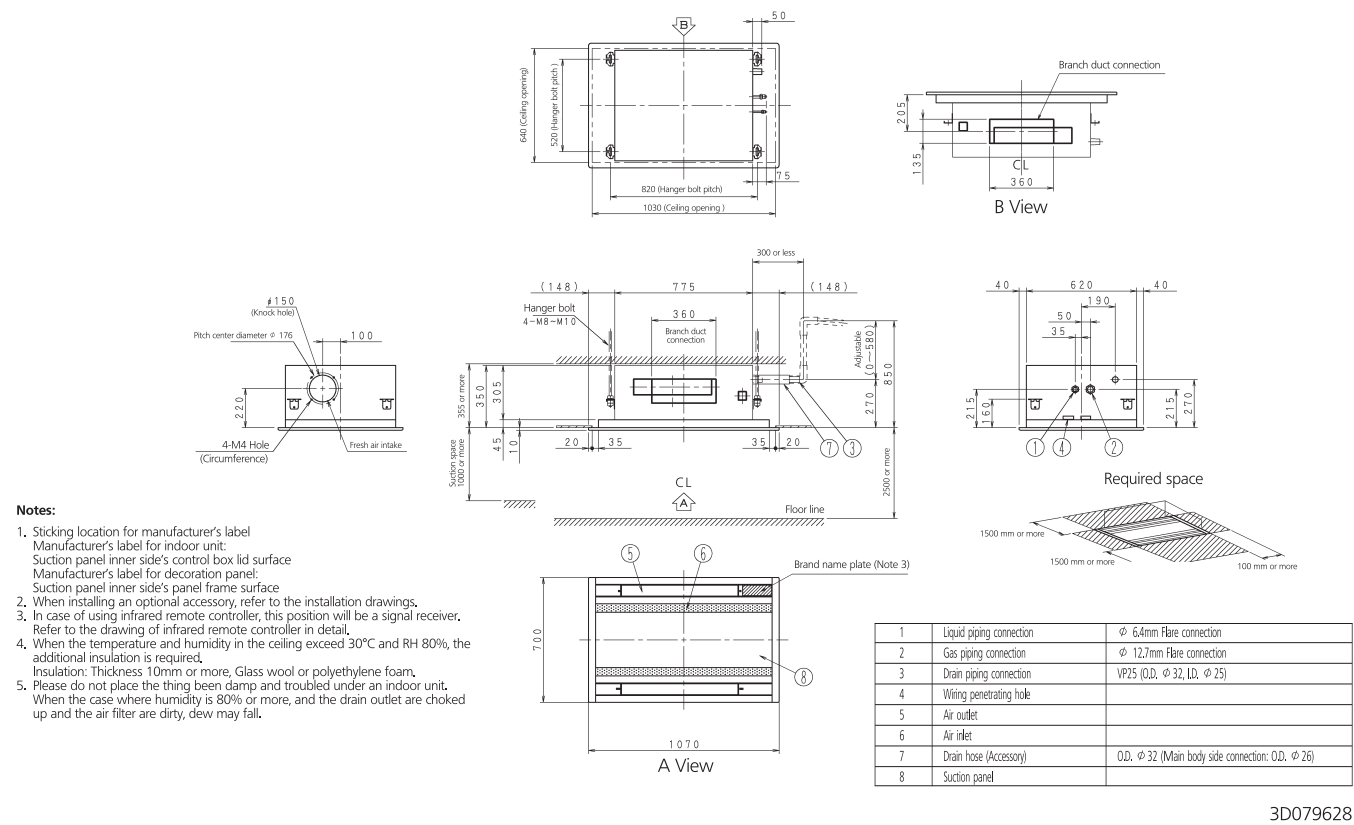
- › Standard drain pump with 580mm lift increases flexibility and installation speed



Indoor unit			FXCQ	20A	25A	32A	40A	50A	63A	80A	125A
Cooling capacity	Nom.		kW	2.2	2.8	3.6	4.5	5.6	7.1	9.0	14.0
Heating capacity	Nom.		kW	2.5	3.2	4.0	5.0	6.3	8.0	10.0	16.0
Power input - 50Hz	Cooling	Nom.	kW	0.031	0.039		0.041	0.059	0.063	0.090	0.149
	Heating	Nom.	kW	0.028	0.035		0.037	0.056	0.060	0.086	0.146
Dimensions	Unit	Height	mm	305							
		Width	mm	775				990		1,445	
		Depth	mm	620							
Weight	Unit		kg	19				22	25	33	38
Casing	Material			Galvanised steel plate							
Decoration panel	Model			BYBCQ40HW1				BYBCQ63HW1		BYBCQ125HW1	
	Colour			Fresh white (6.5Y 9.5/0.5)							
	Dimensions	HeightxWidthxDepth	mm	55x1,070x700				55x1,285x700		55x1,740x700	
	Weight		kg	10				11		13	
Fan-Air flow rate - 50Hz	Cooling	High/Nom./Low	m³/min	10.5/9/7.5	11.5/9.5/8		12/10.5/8.5	15/13/10.5	16/14/11.5	26/22.5/18.5	32/27.5/22.5
Air filter	Type			Resin net with mold resistance							
Sound pressure level	Cooling	High/Nom./Low	dBA	32.0/30.0/28.0	34.0/31.0/29.0	34.0/32.0/30.0	36.0/33.0/31.0	37.0/35.0/31.0	39.0/37.0/32.0	42.0/38.0/33.0	46.0/42.0/38.0
	Heating	High/Nom./Low	dBA	32.0/30.0/28.0	34.0/31.0/29.0	34.0/32.0/30.0	36.0/33.0/31.0	37.0/35.0/31.0	39.0/37.0/32.0	42.0/38.0/33.0	46.0/42.0/38.0
Refrigerant	Type			R-410A							
	GWP			2,087.5							
Piping connections	Liquid	OD	mm	6.35				9.52			
	Gas	OD	mm	12.7				15.9			
	Drain			VP25 (O.D. 32 / I.D. 25)							
Power supply	Phase/Frequency/Voltage		Hz/V	1~/50/220-240							
Current - 50Hz	Maximum fuse amps (MFA)		A	16							
Control systems	Infrared remote control			BRC7C52							
	Wired remote control			BRC1D52 / BRC1E52A/B							
	Simplified wired remote control for hotel applications			BRC2E52C (heat recovery type) / BRC3E52C (heat pump type)							

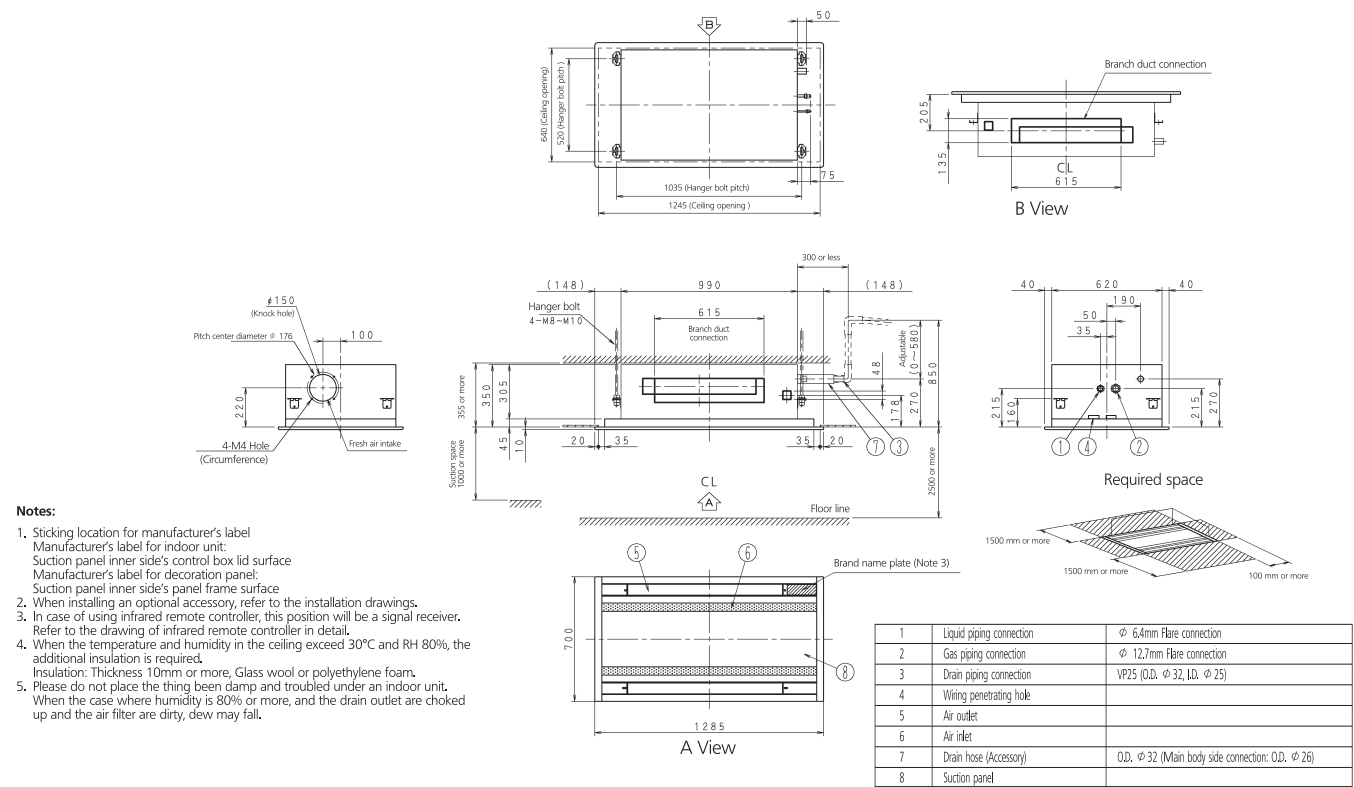
(1) Contains fluorinated greenhouse gases

FXCQ20-40A



3D079628

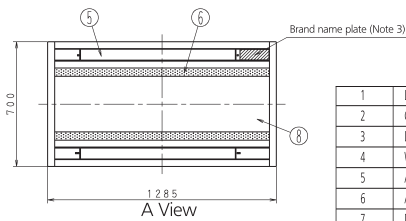
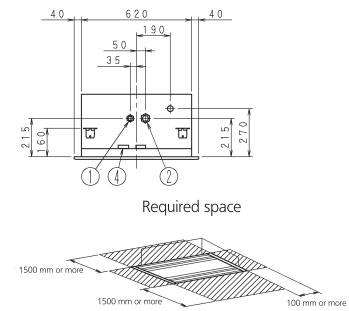
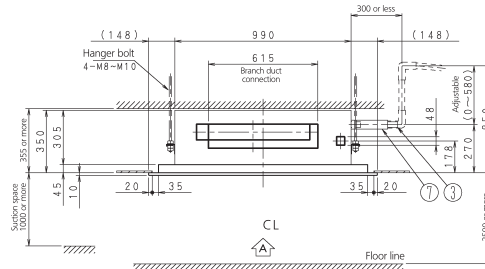
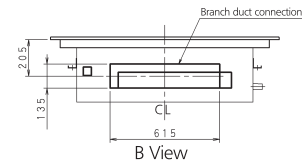
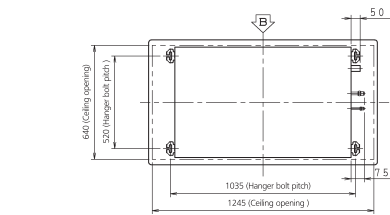
FXCQ50A



3D079629

**Notes:**

- 
- Technical drawing of the front view of a rectangular box. The drawing includes the following dimensions and labels:
- Top width:  $\phi 150$  (Knock hole)
  - Pitch center diameter:  $\phi 176$
  - Right side width: 100
  - Left side height: 220
  - Bottom left corner: 4-M4 Hole (Circumference)
  - Bottom right corner: Fresh air intake

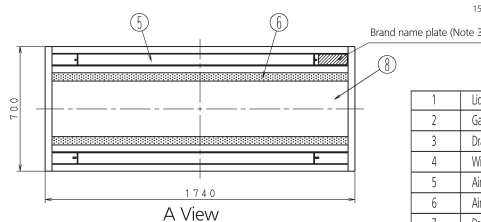
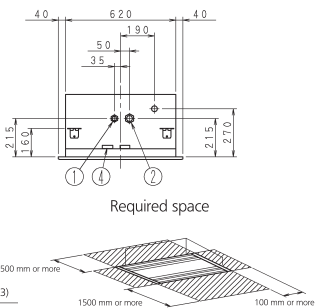
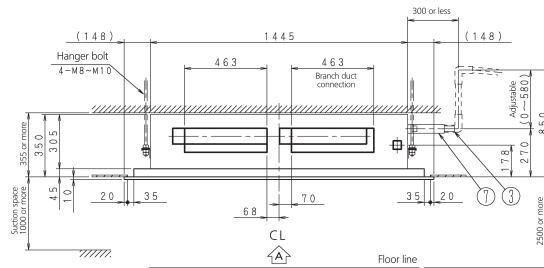
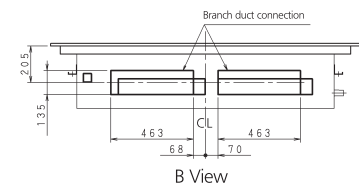
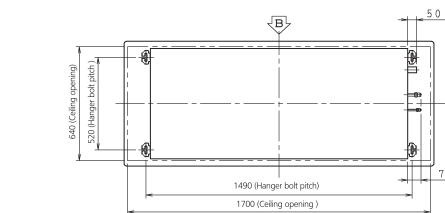


1	Liquid piping connection	Ø 9.5mm Flare connection
2	Gas piping connection	Ø 15.9mm Flare connection
3	Drain piping connection	VP25 (O.D. Ø 32, I.D. Ø 25)
4	Writing penetrating hole	
5	Air outlet	
6	Air inlet	
7	Drain hose (Accessory)	O.D. Ø 32 (Main body side connection: O.D. Ø 26)
8	Suction panel	

3D079630

**Notes:**

- 
- Technical drawing of the front view of the engine block. The drawing shows a rectangular block with a central circular feature. Dimensions and labels include:
- $\phi 150$  (Knock hole)
  - Pitch center diameter  $\phi 176$
  - 100
  - 220
  - 4-M4 Hole (Circumference)
  - Fresh air intake



1	Liquid piping connection	Ø 9.5mm Flare connection
2	Gas piping connection	Ø 15.9mm Flare connection
3	Drain piping connection	VP25 (O.D. Ø 32, I.D. Ø 25)
4	Wiring penetrating hole	
5	Air outlet	
6	Air inlet	
7	Drain hose (Accessory)	O.D. Ø 32 (Main body side connection: O.D. Ø 26)
8	Swivel nipple	

3D079631