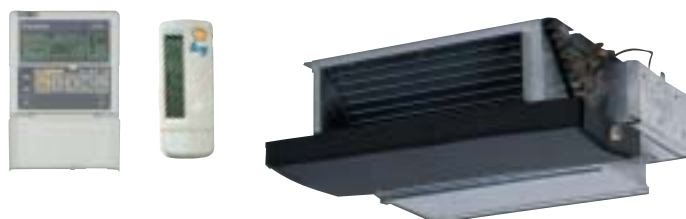




# FXDQ-M7

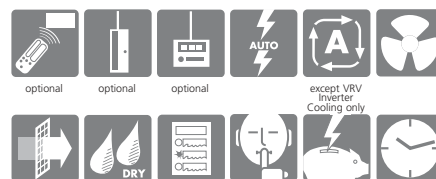
*Concealed ceiling unit  
(small)*

FXDQ20,25M7



- Designed for hotel use
- Compact dimensions, can easily be mounted in a ceiling void
- Since only the suction and discharge grilles are visible, the system will blend in any interior décor

- Extremely quiet in operation, both indoors and outdoors
- The air suction direction can be altered from rear to bottom suction
- Standard air suction filter



## FXDQ-M7V1B

INDOOR UNIT			20	25
Cooling capacity		kW	2.2	2.8
Heating capacity		kW	2.5	3.2
Nominal input	cooling	W		50
	heating	W		50
Dimensions (HxWxD)		mm	230x502x652	
Weight		kg	17	
Air flow rate (H/L)		m <sup>3</sup> /min	6.7/5.2	7.4/5.8
Sound pressure level (H/L)		dB(A)	37/32	
Sound power level		dB(A)	50	
Refrigerant type			R-410A	
Power supply		V1	1~, 50Hz, 230V	
Infrared remote control	cooling		BRC4C64	
	heating		BRC4C62	
Wired remote control			BRC1D517	