



technical data

Slim concealed ceiling unit
FXDQ-PVE - FXDQ-NAVE

air conditioning systems

VRV[®] III-S
VRV[®] III
VRV[®] II
VRV[®]-WII

TABLE OF CONTENTS

FXDQ-PVE - FXDQ-NAVE

1	Specifications	2
	Technical Specifications	2
	Electrical Specifications	3
2	Safety device settings	4
3	Control systems	5
4	Capacity tables	6
	Cooling capacity tables	6
	Heating capacity tables	8
5	Dimensional drawing & centre of gravity	10
	Dimensional drawing	10
	Centre of gravity	12
6	Piping diagram	14
7	Wiring diagram	15
	Wiring diagram	15
8	Sound data	16
	Sound pressure spectrum	16
9	Fan characteristics	18

1 Specifications

1-1 TECHNICAL SPECIFICATIONS				FXDQ20PVE	FXDQ25PVE	FXDQ32PVE	FXDQ40NAVE	FXDQ50NAVE	FXDQ63NAVE
Nominal Capacity	Cooling	kW		2.20	2.80	3.60	4.50	5.60	7.10
	Heating	kW		2.50	3.20	4.00	5.00	6.30	8.00
Power input (Nominal)	Cooling	kW		0.086	0.086	0.089	0.160	0.165	0.181
	Heating	kW		0.067	0.067	0.070	0.147	0.152	0.168
Casing	Material			Galvanised steel plate					
Dimensions	Unit	Height	mm	200	200	200	200	200	200
		Width	mm	700	700	700	900	900	1100
		Depth	mm	620	620	620	620	620	620
Weight	Unit		kg	23.0	23.0	23.0	27.0	28.0	31.0
Heat Exchanger	Dimensions	Nr of Rows		2	2	3	3	3	3
		Fin Pitch	mm	1.50	1.50	1.50	1.50	1.50	1.50
		Face Area	m ²	0.126	0.126	0.126	0.176	0.176	0.227
		Nr of Stages		12	12	12	12	12	12
Fan	Fin	Fin type			Cross fin coil				
	Type	Sirocco fan							
Air Flow Rate	Quantity			1	1	1	1	1	1
	Cooling	High	m ³ /min	8.0	8.0	8.0	10.50	12.50	16.50
Low		m ³ /min	6.4	6.4	6.4	8.50	10.00	13.00	
Fan	External static pressure	High	Pa	30	30	30	44	44	44
		Standard	Pa	10	10	10	15	15	15
	Motor	Output (high)	W	62	62	62	62	130	130
		Drive			Direct drive				
Refrigerant	Name			R-410A					
Cooling	Sound Pressure	High	dBA	33.0	33.0	33.0	34.0	35.0	36.0
		Low	dBA	29.0	29.0	29.0	30.0	31.0	32.0
Piping connections	Liquid (OD)	Type		Flare connection					
		Diameter	mm	6.4	6.4	6.4	6.4	6.4	9.5
	Gas	Type		Flare connection					
		Diameter	mm	12.7	12.7	12.7	12.7	12.7	15.9
Drain	Diameter		VP20 (I.D. 20/O.D. 26)						
Air Filter	Removable/washable/Mildew proof								
Refrigerant control	Electronic expansion valve								
Temperature control	Microprocessor thermostat for cooling and heating								
Safety devices	Fuse								
	Fan motor thermal protector								
	Installation and operation manual								
Standard Accessories	Standard Accessories								
	Drain hose								
	Sealing Pads								
	Clamps								
	Washer								
	Insulation for fitting								
	Clamp metal								
	Washer fixing plate								
	Screws for duct flanges								
	Air filter								
Notes	Nominal cooling capacities are based on : indoor temperature : 27°CDB, 19°CWB, outdoor temperature : 35°CDB, equivalent refrigerant piping : 7.5m (horizontal)								
	Nominal heating capacities are based on : indoor temperature : 20°CDB, outdoor temperature : 7°CDB, 6°CWB, equivalent refrigerant piping : 7.5m (horizontal)								
	Capacities are net, including a deduction for cooling (an addition for heating) for indoor fan motor heat.								
	External static pressure can be changed by the remote control.								
The operation sound levels are conversion values in anechoic chamber. In practice, sound levels tend to be higher than the specified values due to ambient noise or reflection. When the suction place is changed to bottom suction, sound level will increase by approximately 5dBA.									

1

1 Specifications

1-2 ELECTRICAL SPECIFICATIONS			FXDQ20PVE	FXDQ25PVE	FXDQ32PVE	FXDQ40NAVE	FXDQ50NAVE	FXDQ63NAVE	
Power Supply	Name	VE							
	Phase	1	1	1	1	1	1	1	
	Frequency	Hz	50	50	50	50	50	50	
	Voltage	V	220-240						
Current	Minimum circuit amps (MCA)	A	0.80	0.80	0.80	1.00	1.00	1.10	
	Maximum fuse amps (MFA)	A	15	15	15	15.00	15.00	15.00	
	Full load amps (FLA)	A	0.60	0.60	0.60	0.80	0.80	0.90	
Voltage range	Minimum	V	-10%						
	Maximum	V	+10%						
Notes	Voltage range : units are suitable for use on electrical systems where voltage supplied to unit terminals is not below or above listed range limits.								
	Maximum allowable voltage range variation between phases is 2%.								
	MCA/MFA : MCA = 1.25 x FLA								
	MFA <= 4 x FLA								
	next lower standard fuse rating minimum 15A								
	select wire size based on the MCA								
	instead of a fuse, use a circuit breaker								

2 Safety device settings

	FXDQ20P	FXDQ25P	FXDQ32P	FXDQ40NA	FXDQ50NA	FXDQ63NA
PC board (A1P) fuse	250V 5A					
Fan motor thermal protector	OFF: 130 ± 5°C OFF ON: 83 ± 15°C ON					
						4D043861F

2

3 Control systems

Individual control systems

		FXDQ20P	FXDQ25P	FXDQ32P	FXDQ40NA	FXDQ50NA	FXDQ63NA	
Wired remote control							BRC1D52	
Infrared remote control	H/P						BRC4C62	
	C/O						BRC4C64	
Simplified remote control							BRC2A51	
Remote control for hotel use							BRC3A61	

Centralised control systems

		FXDQ20P	FXDQ25P	FXDQ32P	FXDQ40NA	FXDQ50NA	FXDQ63NA	
Central remote control							DCS302CA51	
Unified on/off control							DCS301BA51	
Schedule timer							DST301BA51	

Others

		FXDQ20P	FXDQ25P	FXDQ32P	FXDQ40NA	FXDQ50NA	FXDQ63NA	
Wiring adapter for electrical appendices (1)							KRP2A53	
Wiring adapter for electrical appendices (2)							KRP4A54	
Remote sensor							KRCS01-1A	
Installation box for adapter PCB							KBP1BA101	
Electrical box with earth terminal	2 blocks						KJB212AA	
	3 blocks						KJB311AA	
Noise filter (for electromagnetic interface use only)							KEK26-1A	
External control adapter for outdoor unit (must be installed on indoor units)							DTA104A53	

4D045731C

4 Capacity tables

4 - 1 Cooling capacity tables

4

FXDQ20,25,32P

TC: Total capacity;kW – SHC: Sensible capacity;kW

Unit size	Nominal capacity	Outdoor air temp.	Indoor air temperature													
			14.OWB		16.OWB		18.OWB		19.OWB		20.OWB		22.OWB		24.OWB	
			20.ODB		23.ODB		26.ODB		27.ODB		28.ODB		30.ODB		32.ODB	
			°CDB	TC	SHC	TC	SHC	TC	SHC	TC	SHC	TC	SHC	TC	SHC	TC
20	2.2	10.0	1.5	1.4	1.8	1.6	2.1	1.8	2.2	1.9	2.3	1.9	2.6	1.8	2.9	2.0
		12.0	1.5	1.4	1.8	1.6	2.1	1.8	2.2	1.9	2.3	1.9	2.6	1.8	2.9	2.0
		14.0	1.5	1.4	1.8	1.6	2.1	1.8	2.2	1.9	2.3	1.9	2.6	1.8	2.8	1.9
		16.0	1.5	1.4	1.8	1.6	2.1	1.8	2.2	1.9	2.3	1.9	2.6	1.8	2.8	1.9
		18.0	1.5	1.4	1.8	1.6	2.1	1.8	2.2	1.9	2.3	1.9	2.6	1.8	2.7	1.9
		20.0	1.5	1.4	1.8	1.6	2.1	1.8	2.2	1.9	2.3	1.9	2.6	1.8	2.7	1.9
		21.0	1.5	1.4	1.8	1.6	2.1	1.8	2.2	1.9	2.3	1.9	2.6	1.8	2.7	1.9
		23.0	1.5	1.4	1.8	1.6	2.1	1.8	2.2	1.9	2.3	1.9	2.6	1.8	2.6	1.9
		25.0	1.5	1.4	1.8	1.6	2.1	1.8	2.2	1.9	2.3	1.9	2.6	1.8	2.6	1.9
		27.0	1.5	1.4	1.8	1.6	2.1	1.8	2.2	1.9	2.3	1.9	2.5	1.8	2.6	1.9
		29.0	1.5	1.4	1.8	1.6	2.1	1.8	2.2	1.9	2.3	1.9	2.5	1.8	2.5	1.8
		31.0	1.5	1.4	1.8	1.6	2.1	1.8	2.2	1.9	2.3	1.9	2.4	1.7	2.5	1.8
		33.0	1.5	1.4	1.8	1.6	2.1	1.8	2.2	1.9	2.3	1.9	2.4	1.7	2.5	1.8
		35.0	1.5	1.4	1.8	1.6	2.1	1.8	2.2	1.9	2.3	1.9	2.4	1.7	2.4	1.8
37.0	1.5	1.4	1.8	1.6	2.1	1.8	2.2	1.9	2.3	1.9	2.3	1.7	2.4	1.8		
39.0	1.5	1.4	1.8	1.6	2.1	1.8	2.2	1.9	2.2	1.9	2.3	1.6	2.3	1.8		
25	2.8	10.0	1.9	1.6	2.3	1.9	2.6	2.1	2.8	2.1	3.0	2.2	3.4	2.2	3.7	2.3
		12.0	1.9	1.6	2.3	1.9	2.6	2.1	2.8	2.1	3.0	2.2	3.4	2.2	3.6	2.2
		14.0	1.9	1.6	2.3	1.9	2.6	2.1	2.8	2.1	3.0	2.2	3.4	2.2	3.6	2.2
		16.0	1.9	1.6	2.3	1.9	2.6	2.1	2.8	2.1	3.0	2.2	3.4	2.2	3.5	2.2
		18.0	1.9	1.6	2.3	1.9	2.6	2.1	2.8	2.1	3.0	2.2	3.4	2.2	3.5	2.2
		20.0	1.9	1.6	2.3	1.9	2.6	2.1	2.8	2.1	3.0	2.2	3.4	2.2	3.4	2.2
		21.0	1.9	1.6	2.3	1.9	2.6	2.1	2.8	2.1	3.0	2.2	3.4	2.2	3.4	2.2
		23.0	1.9	1.6	2.3	1.9	2.6	2.1	2.8	2.1	3.0	2.2	3.3	2.2	3.4	2.1
		25.0	1.9	1.6	2.3	1.9	2.6	2.1	2.8	2.1	3.0	2.2	3.3	2.2	3.3	2.1
		27.0	1.9	1.6	2.3	1.9	2.6	2.1	2.8	2.1	3.0	2.2	3.2	2.2	3.3	2.1
		29.0	1.9	1.6	2.3	1.9	2.6	2.1	2.8	2.1	3.0	2.2	3.2	2.1	3.2	2.1
		31.0	1.9	1.6	2.3	1.9	2.6	2.1	2.8	2.1	3.0	2.2	3.1	2.1	3.2	2.1
		33.0	1.9	1.6	2.3	1.9	2.6	2.1	2.8	2.1	3.0	2.2	3.1	2.1	3.1	2.1
		35.0	1.9	1.6	2.3	1.9	2.6	2.1	2.8	2.1	3.0	2.2	3.0	2.1	3.1	2.0
37.0	1.9	1.6	2.3	1.9	2.6	2.1	2.8	2.1	2.9	2.2	3.0	2.0	3.0	2.0		
39.0	1.9	1.6	2.3	1.9	2.6	2.1	2.8	2.1	2.9	2.1	2.9	2.0	3.0	2.0		
32	3.6	10.0	2.4	2.0	2.9	2.3	3.4	2.4	3.6	2.6	3.8	2.7	4.3	2.8	4.7	2.9
		12.0	2.4	2.0	2.9	2.3	3.4	2.4	3.6	2.6	3.8	2.7	4.3	2.8	4.7	2.9
		14.0	2.4	2.0	2.9	2.3	3.4	2.4	3.6	2.6	3.8	2.7	4.3	2.8	4.6	2.8
		16.0	2.4	2.0	2.9	2.3	3.4	2.4	3.6	2.6	3.8	2.7	4.3	2.8	4.6	2.8
		18.0	2.4	2.0	2.9	2.3	3.4	2.4	3.6	2.6	3.8	2.7	4.3	2.8	4.5	2.8
		20.0	2.4	2.0	2.9	2.3	3.4	2.4	3.6	2.6	3.8	2.7	4.3	2.8	4.4	2.8
		21.0	2.4	2.0	2.9	2.3	3.4	2.4	3.6	2.6	3.8	2.7	4.3	2.8	4.4	2.7
		23.0	2.4	2.0	2.9	2.3	3.4	2.4	3.6	2.6	3.8	2.7	4.2	2.8	4.3	2.7
		25.0	2.4	2.0	2.9	2.3	3.4	2.4	3.6	2.6	3.8	2.7	4.2	2.7	4.3	2.7
		27.0	2.4	2.0	2.9	2.3	3.4	2.4	3.6	2.6	3.8	2.7	4.1	2.7	4.2	2.7
		29.0	2.4	2.0	2.9	2.3	3.4	2.4	3.6	2.6	3.8	2.7	4.1	2.7	4.2	2.6
		31.0	2.4	2.0	2.9	2.3	3.4	2.4	3.6	2.6	3.8	2.7	4.0	2.6	4.1	2.6
		33.0	2.4	2.0	2.9	2.3	3.4	2.4	3.6	2.6	3.8	2.7	3.9	2.6	4.0	2.6
		35.0	2.4	2.0	2.9	2.3	3.4	2.4	3.6	2.6	3.8	2.7	3.9	2.6	4.0	2.5
37.0	2.4	2.0	2.9	2.3	3.4	2.4	3.6	2.6	3.7	2.6	3.8	2.6	3.9	2.5		
39.0	2.4	2.0	2.9	2.3	3.4	2.4	3.6	2.6	3.7	2.6	3.8	2.5	3.8	2.5		

ED39226A

4 Capacity tables

4 - 1 Cooling capacity tables

FXDQ40,50,63NA																
Unit size	Nominal capacity	Outdoor air temp.	Indoor air temperature													
			14.OWB		16.OWB		18.OWB		19.OWB		20.OWB		22.OWB		24.OWB	
			20.ODB		23.ODB		26.ODB		27.ODB		28.ODB		30.ODB		32.ODB	
			°CDB	TC	SHC	TC	SHC	TC	SHC	TC	SHC	TC	SHC	TC	SHC	TC
40	4.5	10.0	3.0	2.5	3.6	2.8	4.2	3.3	4.5	3.3	4.8	3.2	5.4	3.3	5.9	3.5
		12.0	3.0	2.5	3.6	2.8	4.2	3.3	4.5	3.3	4.8	3.2	5.4	3.3	5.8	3.5
		14.0	3.0	2.5	3.6	2.8	4.2	3.3	4.5	3.3	4.8	3.2	5.4	3.3	5.8	3.5
		16.0	3.0	2.5	3.6	2.8	4.2	3.3	4.5	3.3	4.8	3.2	5.4	3.3	5.7	3.5
		18.0	3.0	2.5	3.6	2.8	4.2	3.3	4.5	3.3	4.8	3.2	5.4	3.3	5.6	3.4
		20.0	3.0	2.5	3.6	2.8	4.2	3.3	4.5	3.3	4.8	3.2	5.4	3.3	5.5	3.4
		21.0	3.0	2.5	3.6	2.8	4.2	3.3	4.5	3.3	4.8	3.2	5.4	3.3	5.5	3.4
		23.0	3.0	2.5	3.6	2.8	4.2	3.3	4.5	3.3	4.8	3.2	5.3	3.3	5.4	3.3
		25.0	3.0	2.5	3.6	2.8	4.2	3.3	4.5	3.3	4.8	3.2	5.2	3.3	5.3	3.3
		27.0	3.0	2.5	3.6	2.8	4.2	3.3	4.5	3.3	4.8	3.2	5.2	3.2	5.3	3.3
		29.0	3.0	2.5	3.6	2.8	4.2	3.3	4.5	3.3	4.8	3.2	5.1	3.2	5.2	3.3
		31.0	3.0	2.5	3.6	2.8	4.2	3.3	4.5	3.3	4.8	3.2	5.0	3.2	5.1	3.2
		33.0	3.0	2.5	3.6	2.8	4.2	3.3	4.5	3.3	4.8	3.2	4.9	3.2	5.0	3.2
		35.0	3.0	2.5	3.6	2.8	4.2	3.3	4.5	3.3	4.7	3.2	4.9	3.1	5.0	3.2
		37.0	3.0	2.5	3.6	2.8	4.2	3.3	4.5	3.3	4.7	3.2	4.8	3.1	4.9	3.1
		39.0	3.0	2.5	3.6	2.8	4.2	3.3	4.5	3.3	4.6	3.2	4.7	3.1	4.8	3.1
50	5.6	10.0	3.8	3.1	4.5	3.5	5.2	3.9	5.6	4.0	6.0	4.0	6.7	4.2	7.4	4.1
		12.0	3.8	3.1	4.5	3.5	5.2	3.9	5.6	4.0	6.0	4.0	6.7	4.2	7.3	4.1
		14.0	3.8	3.1	4.5	3.5	5.2	3.9	5.6	4.0	6.0	4.0	6.7	4.2	7.2	4.1
		16.0	3.8	3.1	4.5	3.5	5.2	3.9	5.6	4.0	6.0	4.0	6.7	4.2	7.1	4.0
		18.0	3.8	3.1	4.5	3.5	5.2	3.9	5.6	4.0	6.0	4.0	6.7	4.2	7.0	4.0
		20.0	3.8	3.1	4.5	3.5	5.2	3.9	5.6	4.0	6.0	4.0	6.7	4.2	6.9	4.0
		21.0	3.8	3.1	4.5	3.5	5.2	3.9	5.6	4.0	6.0	4.0	6.7	4.2	6.8	4.0
		23.0	3.8	3.1	4.5	3.5	5.2	3.9	5.6	4.0	6.0	4.0	6.6	4.2	6.7	3.9
		25.0	3.8	3.1	4.5	3.5	5.2	3.9	5.6	4.0	6.0	4.0	6.5	4.1	6.6	3.9
		27.0	3.8	3.1	4.5	3.5	5.2	3.9	5.6	4.0	6.0	4.0	6.4	4.1	6.6	3.9
		29.0	3.8	3.1	4.5	3.5	5.2	3.9	5.6	4.0	6.0	4.0	6.3	4.0	6.5	3.8
		31.0	3.8	3.1	4.5	3.5	5.2	3.9	5.6	4.0	6.0	4.0	6.2	4.0	6.4	3.8
		33.0	3.8	3.1	4.5	3.5	5.2	3.9	5.6	4.0	6.0	4.0	6.1	4.0	6.3	3.8
		35.0	3.8	3.1	4.5	3.5	5.2	3.9	5.6	4.0	5.9	4.0	6.0	3.9	6.2	3.7
		37.0	3.8	3.1	4.5	3.5	5.2	3.9	5.6	4.0	5.8	4.0	5.9	3.9	6.1	3.7
		39.0	3.8	3.1	4.5	3.5	5.2	3.9	5.6	4.0	5.7	3.9	5.8	3.9	6.0	3.7
63	7.1	10.0	4.8	3.8	5.7	4.3	6.6	4.8	7.1	4.9	7.6	4.9	8.5	5.1	9.3	5.7
		12.0	4.8	3.8	5.7	4.3	6.6	4.8	7.1	4.9	7.6	4.9	8.5	5.1	9.2	5.6
		14.0	4.8	3.8	5.7	4.3	6.6	4.8	7.1	4.9	7.6	4.9	8.5	5.1	9.1	5.5
		16.0	4.8	3.8	5.7	4.3	6.6	4.8	7.1	4.9	7.6	4.9	8.5	5.1	9.0	5.4
		18.0	4.8	3.8	5.7	4.3	6.6	4.8	7.1	4.9	7.6	4.9	8.5	5.1	8.8	5.4
		20.0	4.8	3.8	5.7	4.3	6.6	4.8	7.1	4.9	7.6	4.9	8.5	5.1	8.7	5.3
		21.0	4.8	3.8	5.7	4.3	6.6	4.8	7.1	4.9	7.6	4.9	8.5	5.1	8.7	5.3
		23.0	4.8	3.8	5.7	4.3	6.6	4.8	7.1	4.9	7.6	4.9	8.4	5.1	8.5	5.2
		25.0	4.8	3.8	5.7	4.3	6.6	4.8	7.1	4.9	7.6	4.9	8.3	5.0	8.4	5.1
		27.0	4.8	3.8	5.7	4.3	6.6	4.8	7.1	4.9	7.6	4.9	8.1	5.0	8.3	5.1
		29.0	4.8	3.8	5.7	4.3	6.6	4.8	7.1	4.9	7.6	4.9	8.0	4.9	8.2	5.0
		31.0	4.8	3.8	5.7	4.3	6.6	4.8	7.1	4.9	7.6	4.9	7.9	4.9	8.1	4.9
		33.0	4.8	3.8	5.7	4.3	6.6	4.8	7.1	4.9	7.6	4.9	7.8	4.8	7.9	4.9
		35.0	4.8	3.8	5.7	4.3	6.6	4.8	7.1	4.9	7.5	4.8	7.7	4.8	7.8	4.8
		37.0	4.8	3.8	5.7	4.3	6.6	4.8	7.1	4.9	7.4	4.8	7.5	4.7	7.7	4.8
		39.0	4.8	3.8	5.7	4.3	6.6	4.8	7.1	4.9	7.2	4.7	7.4	4.7	7.6	4.7

ED39226A

4 Capacity tables

4 - 2 Heating capacity tables

FXDQ20,25,32P

Unit Size	Nominal capacity	Outdoor air temperature		Indoor air temperature °CDB					
				16.0	18.0	20.0	21.0	22.0	24.0
		°CDB	°CWB	kW	kW	kW	kW	kW	kW
20	2.5	-19.8	-20.0	1.5	1.5	1.5	1.5	1.5	1.5
		-18.8	-19.0	1.5	1.5	1.5	1.5	1.5	1.5
		-16.7	-17.0	1.6	1.6	1.6	1.6	1.6	1.6
		-14.7	-15.0	1.7	1.7	1.7	1.7	1.7	1.7
		-12.6	-13.0	1.8	1.8	1.8	1.8	1.8	1.8
		-10.5	-11.0	1.9	1.9	1.9	1.9	1.9	1.9
		-9.5	-10.0	1.9	1.9	1.9	1.9	1.9	1.9
		-8.5	-9.1	2.0	2.0	1.9	1.9	1.9	1.9
		-7.0	-7.6	2.0	2.0	2.0	2.0	2.0	2.0
		-5.0	-5.6	2.1	2.1	2.1	2.1	2.1	2.1
		-3.0	-3.7	2.2	2.2	2.2	2.2	2.2	2.2
		0.0	-0.7	2.3	2.3	2.3	2.3	2.3	2.2
		3.0	2.2	2.5	2.5	2.4	2.4	2.3	2.2
		5.0	4.1	2.5	2.5	2.5	2.4	2.3	2.2
		7.0	6.0	2.6	2.6	2.5	2.4	2.3	2.2
		9.0	7.9	2.7	2.7	2.5	2.4	2.3	2.2
11.0	9.8	2.8	2.7	2.5	2.4	2.3	2.2		
13.0	11.8	2.8	2.7	2.5	2.4	2.3	2.2		
15.0	13.7	2.8	2.7	2.5	2.4	2.3	2.2		
25	3.2	-19.8	-20.0	1.9	1.9	1.9	1.9	1.9	1.9
		-18.8	-19.0	1.9	1.9	1.9	1.9	1.9	1.9
		-16.7	-17.0	2.1	2.1	2.0	2.0	2.0	2.0
		-14.7	-15.0	2.2	2.2	2.2	2.2	2.2	2.1
		-12.6	-13.0	2.3	2.3	2.3	2.3	2.3	2.3
		-10.5	-11.0	2.4	2.4	2.4	2.4	2.4	2.4
		-9.5	-10.0	2.5	2.4	2.4	2.4	2.4	2.4
		-8.5	-9.1	2.5	2.5	2.5	2.5	2.5	2.5
		-7.0	-7.6	2.6	2.6	2.6	2.6	2.6	2.6
		-5.0	-5.6	2.7	2.7	2.7	2.7	2.7	2.7
		-3.0	-3.7	2.8	2.8	2.8	2.8	2.8	2.8
		0.0	-0.7	3.0	3.0	3.0	3.0	3.0	2.8
		3.0	2.2	3.1	3.1	3.1	3.1	3.0	2.8
		5.0	4.1	3.3	3.2	3.2	3.1	3.0	2.8
		7.0	6.0	3.4	3.4	3.2	3.1	3.0	2.8
		9.0	7.9	3.5	3.4	3.2	3.1	3.0	2.8
11.0	9.8	3.6	3.4	3.2	3.1	3.0	2.8		
13.0	11.8	3.6	3.4	3.2	3.1	3.0	2.8		
15.0	13.7	3.6	3.4	3.2	3.1	3.0	2.8		
32	4.0	-19.8	-20.0	2.4	2.4	2.3	2.3	2.3	2.3
		-18.8	-19.0	2.4	2.4	2.4	2.4	2.4	2.4
		-16.7	-17.0	2.6	2.6	2.6	2.6	2.6	2.5
		-14.7	-15.0	2.7	2.7	2.7	2.7	2.7	2.7
		-12.6	-13.0	2.9	2.8	2.8	2.8	2.8	2.8
		-10.5	-11.0	3.0	3.0	3.0	3.0	3.0	3.0
		-9.5	-10.0	3.1	3.1	3.1	3.1	3.0	3.0
		-8.5	-9.1	3.1	3.1	3.1	3.1	3.1	3.1
		-7.0	-7.6	3.2	3.2	3.2	3.2	3.2	3.2
		-5.0	-5.6	3.4	3.4	3.4	3.4	3.4	3.4
		-3.0	-3.7	3.5	3.5	3.5	3.5	3.5	3.5
		0.0	-0.7	3.7	3.7	3.7	3.7	3.7	3.5
		3.0	2.2	3.9	3.9	3.9	3.9	3.7	3.5
		5.0	4.1	4.1	4.1	4.0	3.9	3.7	3.5
		7.0	6.0	4.2	4.2	4.0	3.9	3.7	3.5
		9.0	7.9	4.3	4.3	4.0	3.9	3.7	3.5
11.0	9.8	4.5	4.3	4.0	3.9	3.7	3.5		
13.0	11.8	4.5	4.3	4.0	3.9	3.7	3.5		
15.0	13.7	4.5	4.3	4.0	3.9	3.7	3.5		

ED39226A

4 Capacity tables

4 - 2 Heating capacity tables

FXDQ40,50,63NA									
Unit Size	Nominal capacity	Outdoor air temperature		Indoor air temperature °CDB					
				16.0	18.0	20.0	21.0	22.0	24.0
		°CDB	°CWB	kW	kW	kW	kW	kW	kW
40	5.0	-19.8	-20.0	3.0	2.9	2.9	2.9	2.9	2.9
		-18.8	-19.0	3.0	3.0	3.0	3.0	3.0	3.0
		-16.7	-17.0	3.2	3.2	3.2	3.2	3.2	3.2
		-14.7	-15.0	3.4	3.4	3.4	3.4	3.4	3.4
		-12.6	-13.0	3.6	3.6	3.6	3.5	3.5	3.5
		-10.5	-11.0	3.7	3.7	3.7	3.7	3.7	3.7
		-9.5	-10.0	3.8	3.8	3.8	3.8	3.8	3.8
		-8.5	-9.1	3.9	3.9	3.9	3.9	3.9	3.9
		-7.0	-7.6	4.0	4.0	4.0	4.0	4.0	4.0
		-5.0	-5.6	4.2	4.2	4.2	4.2	4.2	4.2
		-3.0	-3.7	4.4	4.4	4.4	4.4	4.4	4.4
		0.0	-0.7	4.7	4.6	4.6	4.6	4.6	4.4
		3.0	2.2	4.9	4.9	4.9	4.8	4.7	4.4
		5.0	4.1	5.1	5.1	5.0	4.8	4.7	4.4
		7.0	6.0	5.2	5.2	5.0	4.8	4.7	4.4
		9.0	7.9	5.4	5.3	5.0	4.8	4.7	4.4
11.0	9.8	5.6	5.3	5.0	4.8	4.7	4.4		
13.0	11.8	5.6	5.3	5.0	4.8	4.7	4.4		
15.0	13.7	5.6	5.3	5.0	4.8	4.7	4.4		
50	6.3	-19.8	-20.0	3.7	3.7	3.7	3.7	3.7	3.7
		-18.8	-19.0	3.8	3.8	3.8	3.8	3.8	3.8
		-16.7	-17.0	4.1	4.0	4.0	4.0	4.0	4.0
		-14.7	-15.0	4.3	4.3	4.3	4.2	4.2	4.2
		-12.6	-13.0	4.5	4.5	4.5	4.5	4.5	4.5
		-10.5	-11.0	4.7	4.7	4.7	4.7	4.7	4.7
		-9.5	-10.0	4.8	4.8	4.8	4.8	4.8	4.8
		-8.5	-9.1	4.9	4.9	4.9	4.9	4.9	4.9
		-7.0	-7.6	5.1	5.1	5.1	5.1	5.1	5.1
		-5.0	-5.6	5.3	5.3	5.3	5.3	5.3	5.3
		-3.0	-3.7	5.5	5.5	5.5	5.5	5.5	5.5
		0.0	-0.7	5.9	5.9	5.8	5.8	5.8	5.5
		3.0	2.2	6.2	6.2	6.2	6.1	5.9	5.5
		5.0	4.1	6.4	6.4	6.3	6.1	5.9	5.5
		7.0	6.0	6.6	6.6	6.3	6.1	5.9	5.5
		9.0	7.9	6.8	6.7	6.3	6.1	5.9	5.5
11.0	9.8	7.0	6.7	6.3	6.1	5.9	5.5		
13.0	11.8	7.1	6.7	6.3	6.1	5.9	5.5		
15.0	13.7	7.1	6.7	6.3	6.1	5.9	5.5		
63	8.0	-19.8	-20.0	4.7	4.7	4.7	4.7	4.7	4.7
		-18.8	-19.0	4.9	4.9	4.8	4.8	4.8	4.8
		-16.7	-17.0	5.1	5.1	5.1	5.1	5.1	5.1
		-14.7	-15.0	5.4	5.4	5.4	5.4	5.4	5.4
		-12.6	-13.0	5.7	5.7	5.7	5.7	5.7	5.7
		-10.5	-11.0	6.0	6.0	6.0	6.0	6.0	5.9
		-9.5	-10.0	6.1	6.1	6.1	6.1	6.1	6.1
		-8.5	-9.1	6.3	6.3	6.2	6.2	6.2	6.2
		-7.0	-7.6	6.5	6.5	6.4	6.4	6.4	6.4
		-5.0	-5.6	6.8	6.7	6.7	6.7	6.7	6.7
		-3.0	-3.7	7.0	7.0	7.0	7.0	7.0	7.0
		0.0	-0.7	7.5	7.4	7.4	7.4	7.4	7.0
		3.0	2.2	7.9	7.8	7.8	7.7	7.5	7.0
		5.0	4.1	8.1	8.1	8.0	7.7	7.5	7.0
		7.0	6.0	8.4	8.4	8.0	7.7	7.5	7.0
		9.0	7.9	8.7	8.5	8.0	7.7	7.5	7.0
11.0	9.8	8.9	8.5	8.0	7.7	7.5	7.0		
13.0	11.8	9.0	8.5	8.0	7.7	7.5	7.0		
15.0	13.7	9.0	8.5	8.0	7.7	7.5	7.0		

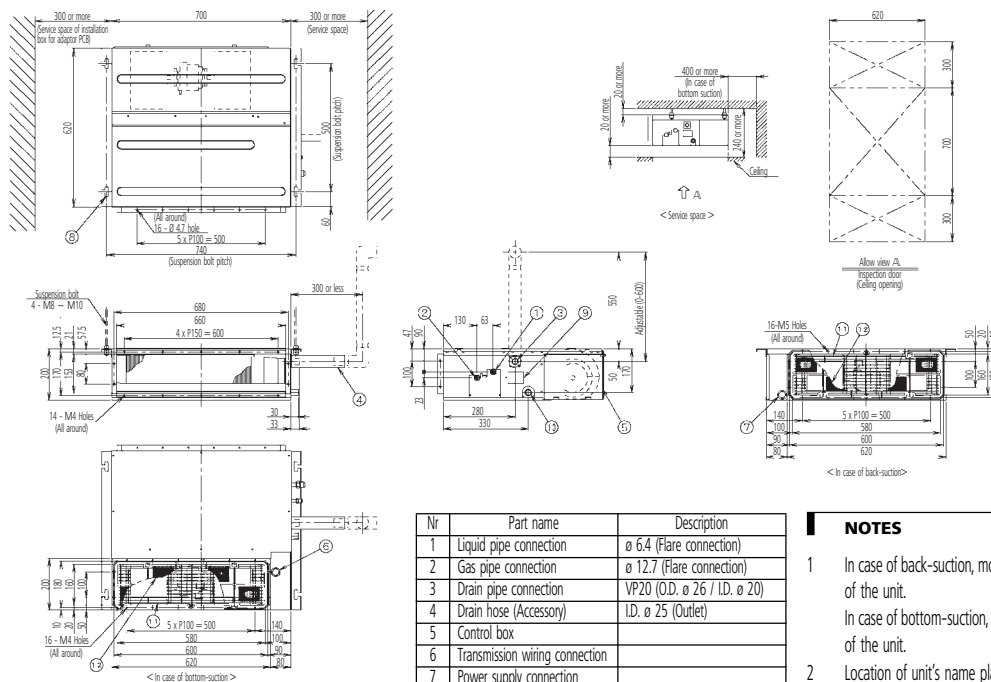
ED39226A

5 Dimensional drawing & centre of gravity

5 - 1 Dimensional drawing

5

FXDQ20,25,32P



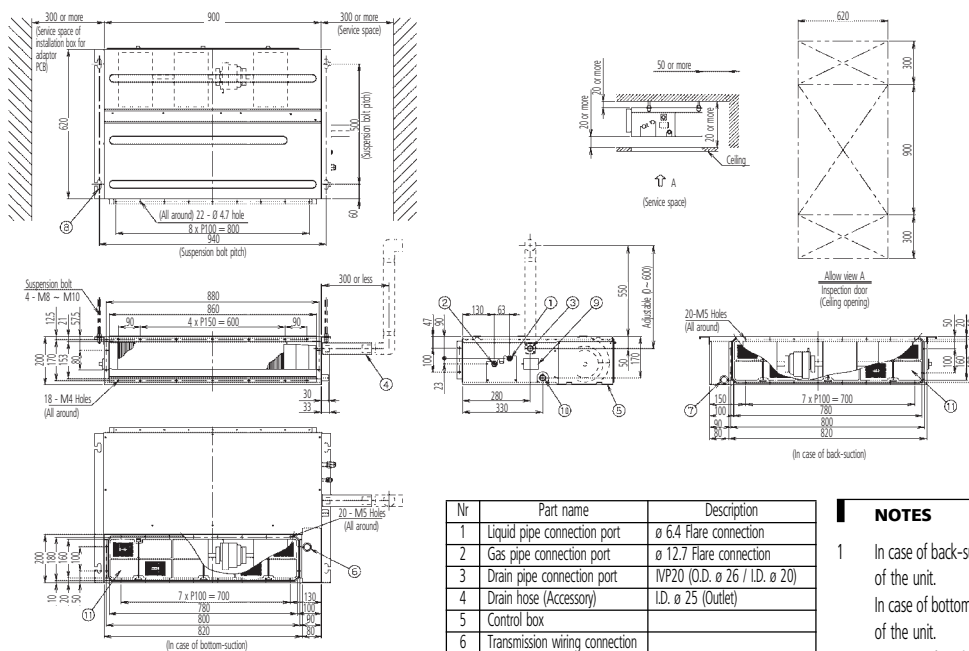
Nr	Part name	Description
1	Liquid pipe connection	ø 6.4 (Flare connection)
2	Gas pipe connection	ø 12.7 (Flare connection)
3	Drain pipe connection	VP20 (O.D. ø 26 / I.D. ø 20)
4	Drain hose (Accessory)	I.D. ø 25 (Outlet)
5	Control box	
6	Transmission wiring connection	
7	Power supply connection	
8	Suspension bracket	
9	Inspection door	
10	Socket for drain	
11	Protection for drain	
12	Air filter (Accessory)	

NOTES

- In case of back-suction, mount chamber cover to bottom side of the unit.
In case of bottom-suction, mount chamber cover to back side of the unit.
- Location of unit's name plate: control box cover.
- Mount the air filter at the suction side.
(Select its color/method (gravity method) 50% or more).
It can not be equipped with air filter (accessory) when connecting duct to suction side.

3D049799A

FXDQ40,50NA



Nr	Part name	Description
1	Liquid pipe connection port	ø 6.4 Flare connection
2	Gas pipe connection port	ø 12.7 Flare connection
3	Drain pipe connection port	VP20 (O.D. ø 26 / I.D. ø 20)
4	Drain hose (Accessory)	I.D. ø 25 (Outlet)
5	Control box	
6	Transmission wiring connection	
7	Power supply connection	
8	Suspension bracket	
9	Inspection door	
10	Socket for drain	
11	Air filter (Accessory)	

NOTES

- In case of back-suction, mount chamber cover to bottom side of the unit.
In case of bottom-suction, mount chamber cover to back side of the unit.
- Location of unit's name plate: control box cover.
- Mount the air filter at the suction side.
(Select its color/method (gravity method) 50% or more).
It can not be equipped with air filter (accessory) when connecting duct to suction side.

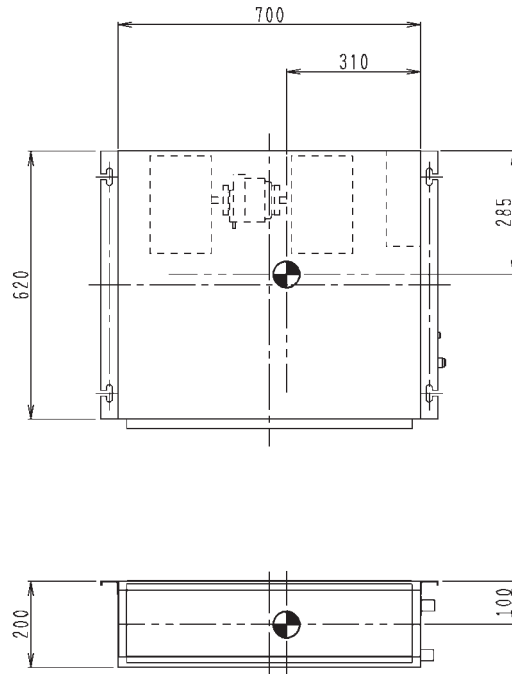
3D045494

5 Dimensional drawing & centre of gravity

5 - 2 Centre of gravity

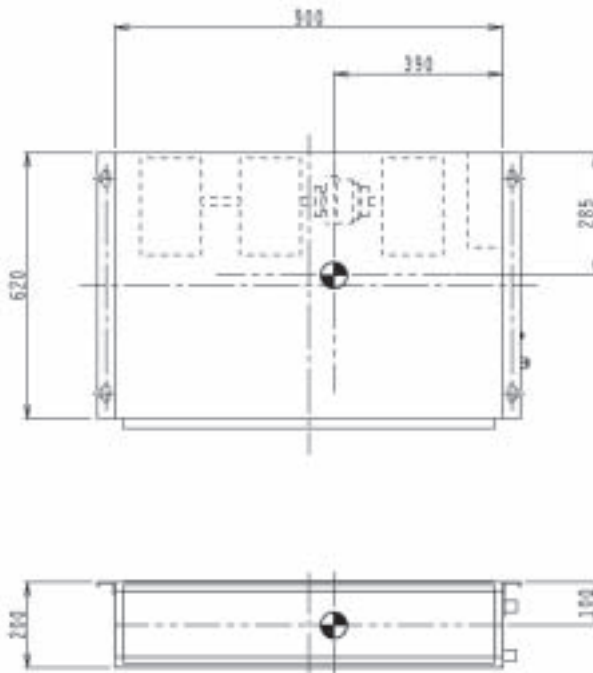
5

FXDQ20,25,32P



4D049300A

FXDQ40,50NA

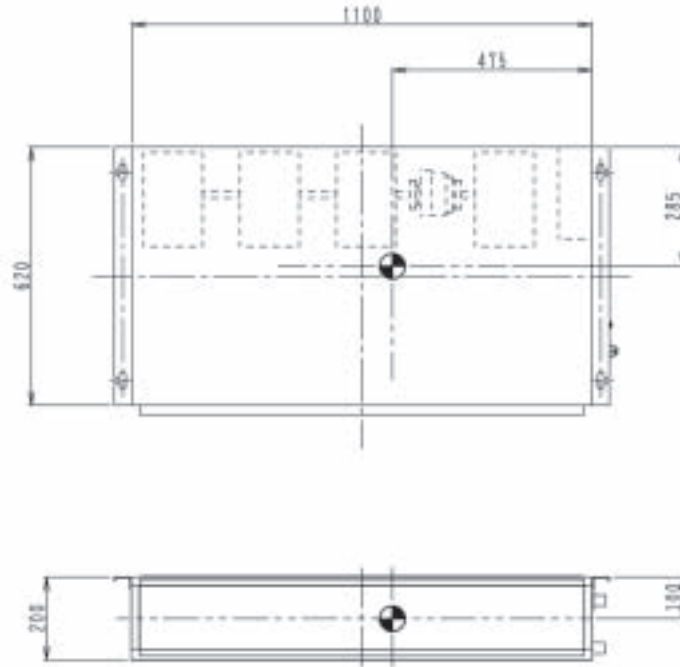


4D043886B

5 Dimensional drawing & centre of gravity

5 - 2 Centre of gravity

FXDQ63NA

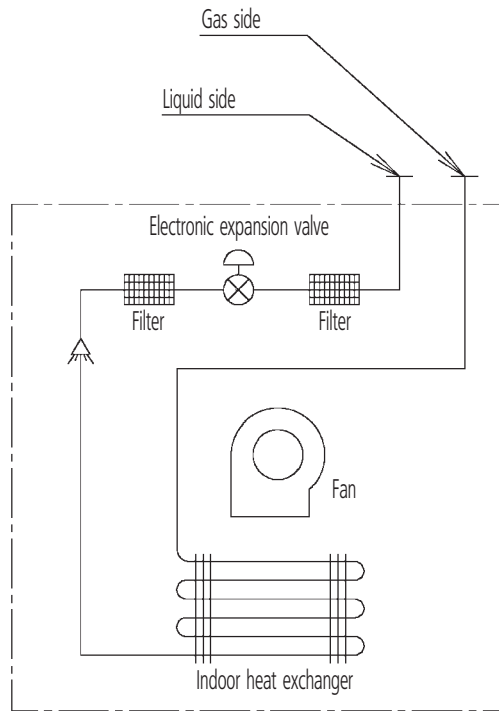


4D043887B

6 Piping diagram

6

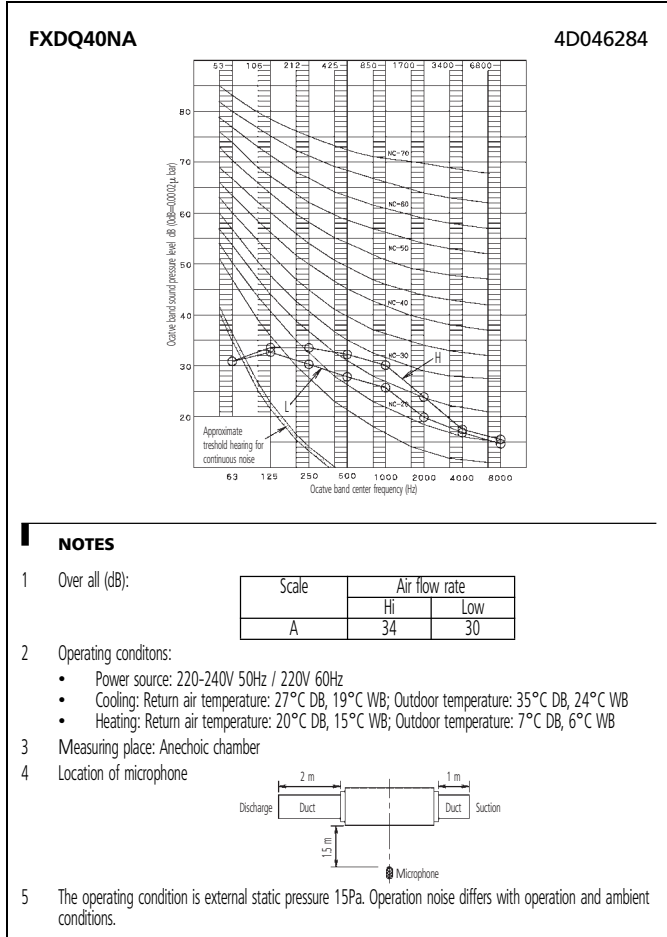
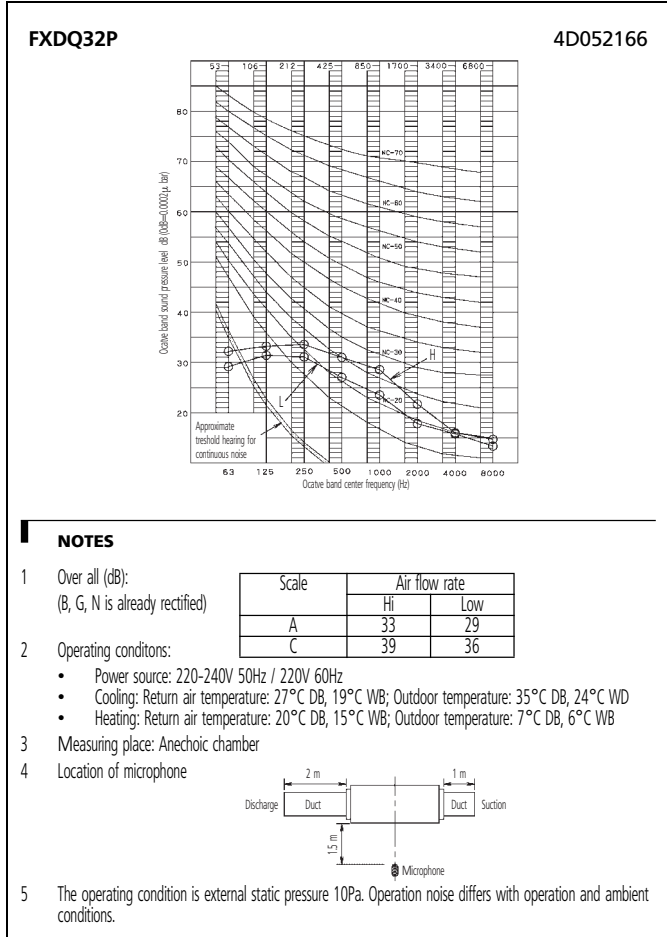
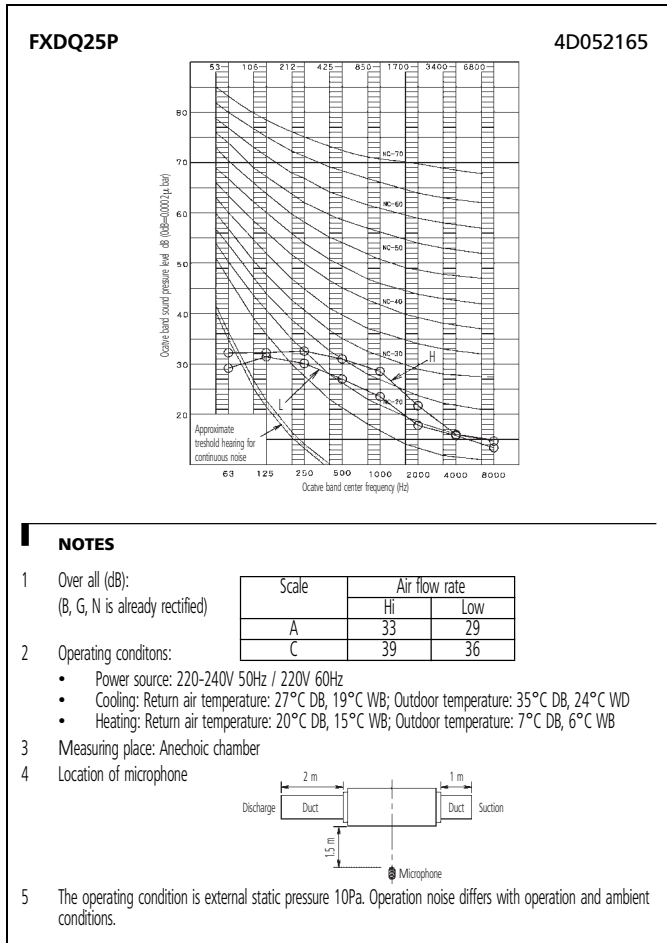
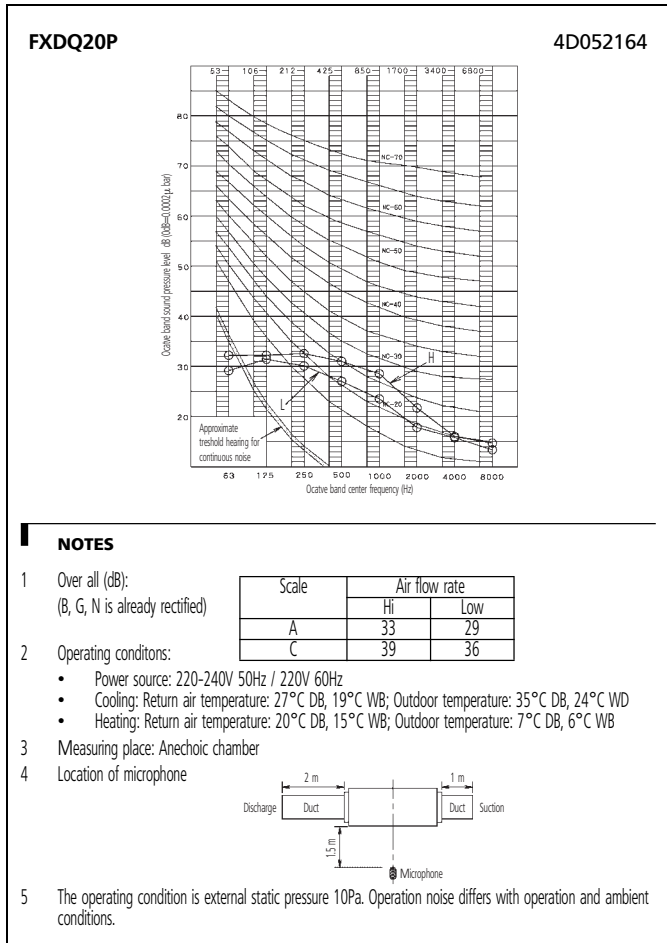
FXDQ20,25,32P - FXDQ40,50,63NA



4D043864F

8 Sound data

8 - 1 Sound pressure spectrum



8 Sound data

8 - 1 Sound pressure spectrum

FXDQ50NA
4D046285

Approximate threshold hearing for continuous noise

Notes:

- Over all (dB):

Scale	Air flow rate	
	Hi	Low
A	35	31
- Operating conditons:
 - Power source: 220-240V 50Hz / 220V 60Hz
 - Cooling: Return air temperature: 27°C DB, 19°C WB; Outdoor temperature: 35°C DB, 24°C WB
 - Heating: Return air temperature: 20°C DB, 15°C WB; Outdoor temperature: 7°C DB, 6°C WB
- Measuring place: Anechoic chamber
- Location of microphone
- The operating condition is external static pressure 15Pa. Operation noise differs with operation and ambient conditions.

FXDQ63NA
4D046286

Approximate threshold hearing for continuous noise

Notes:

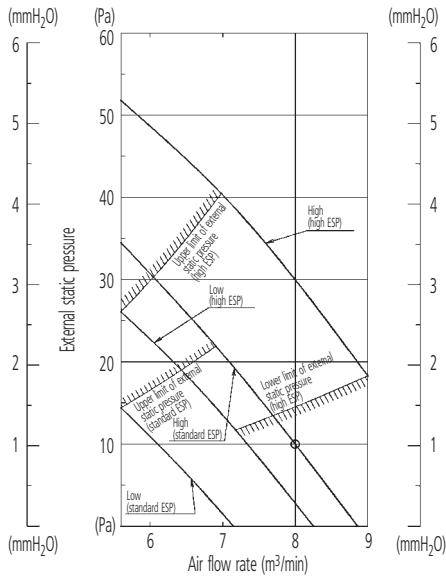
- Over all (dB):

Scale	Air flow rate	
	Hi	Low
A	36	32
- Operating conditons:
 - Power source: 220-240V 50Hz / 220V 60Hz
 - Cooling: Return air temperature: 27°C DB, 19°C WB; Outdoor temperature: 35°C DB, 24°C WB
 - Heating: Return air temperature: 20°C DB, 15°C WB; Outdoor temperature: 7°C DB, 6°C WB
- Measuring place: Anechoic chamber
- Location of microphone
- The operating condition is external static pressure 15Pa. Operation noise differs with operation and ambient conditions.

9 Fan characteristics

FXDQ20,25P

3D052156

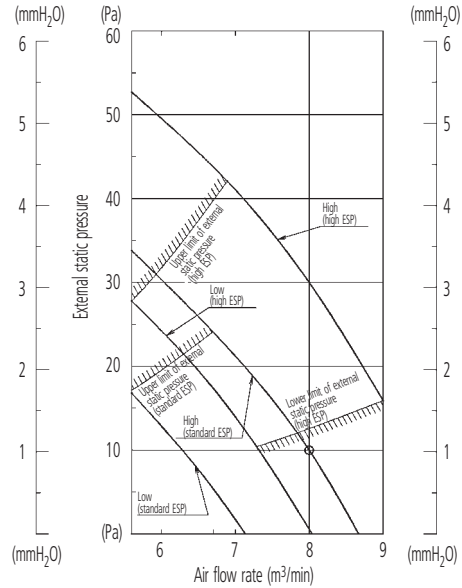


NOTES

- 1 The remote control can be used to switch between “high” and “low”.
- 2 The air flow is set to “standard” before leaving the factory. It is possible to switch between “standard ESP” and “high ESP” by the remote control.

FXDQ32P

3D052157

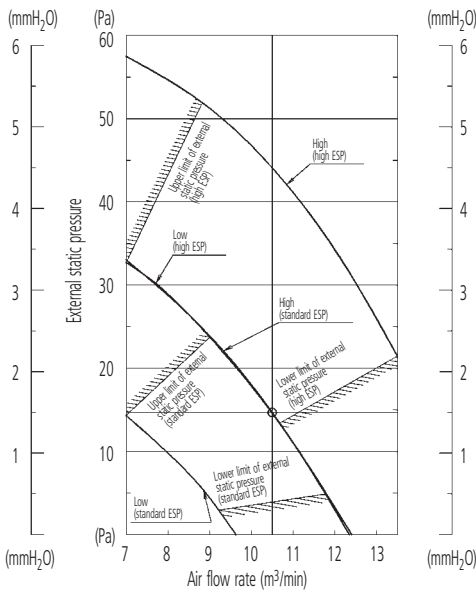


NOTES

- 1 The remote control can be used to switch between “high” and “low”.
- 2 The air flow is set to “standard” before leaving the factory. It is possible to switch between “standard ESP” and “high ESP” by the remote control.

FXDQ40NA

3D046299

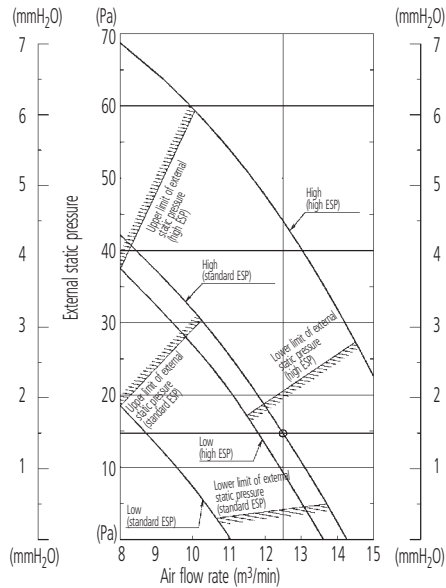


NOTES

- 1 The remote control can be used to switch between “high” and “low”.
- 2 The air flow is set to “standard” before leaving the factory. It is possible to switch between “standard ESP” and “high ESP” via the remote control.

FXDQ50NA

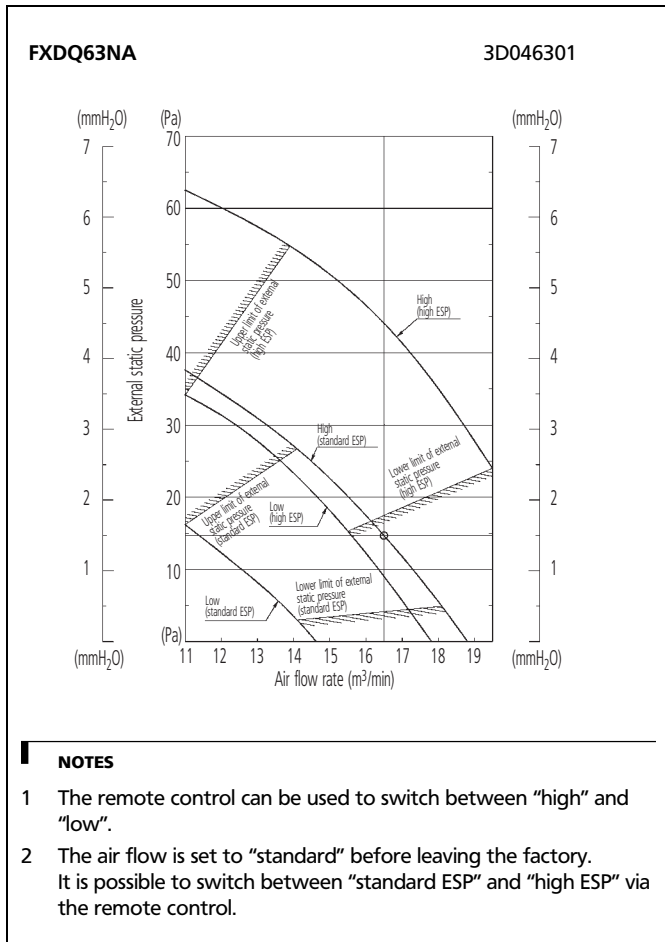
3D046300



NOTES

- 1 The remote control can be used to switch between “high” and “low”.
- 2 The air flow is set to “standard” before leaving the factory. It is possible to switch between “standard ESP” and “high ESP” via the remote control.

9 Fan characteristics



9 Fan characteristics

2

VRV III-S
VRV III
VRV II
VRV-WII

"The present publication is drawn up by way of information only and does not constitute an offer binding upon Daikin Europe N.V.. Daikin Europe N.V. has compiled the content of this publication to the best of its knowledge. No express or implied warranty is given for the completeness, accuracy, reliability or fitness for particular purpose of its content and the products and services presented therein. Specifications are subject to change without prior notice. Daikin Europe N.V. explicitly rejects any liability for any direct or indirect damage, in the broadest sense, arising from or related to the use and/or interpretation of this publication. All content is copyrighted by Daikin Europe N.V.."



ISO14001 assures an effective environmental management system in order to help protect human health and the environment from the potential impact of our activities, products and services and to assist in maintaining and improving the quality of the environment.



Daikin Europe N.V. is approved by LRQA for its Quality Management System in accordance with the ISO9001 standard. ISO9001 pertains to quality assurance regarding design, development, manufacturing as well as to services related to the product.



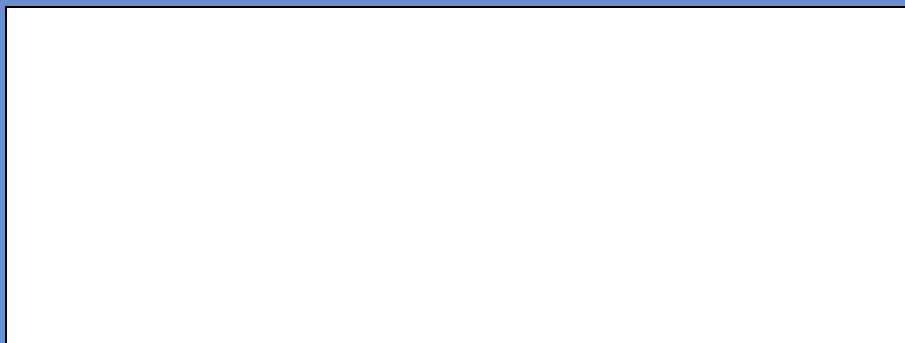
Daikin units comply with the European regulations that guarantee the safety of the product.

VRV products are not within the scope of the Eurovent certification programme.

Daikin equipment is designed for comfort applications. For use in other applications, please contact your local Daikin representative.

DAIKIN EUROPE N.V.

Zandvoordestraat 300
B-8400 Ostend - Belgium
www.daikineurope.com



EEDE06-2