



# FXDQ-PB/NB

## Slim Concealed Ceiling Unit



BRC1E51



BRC1D52

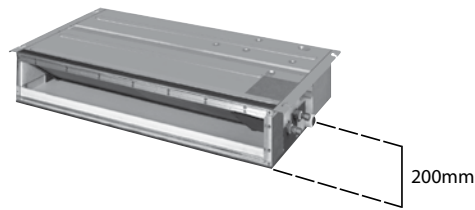


BRC4C65



FXDQ20-32PB

- Slim design for flexible installation
- Compact dimensions, can easily be mounted in a ceiling void of only 240mm
- Low noise: down to 29 dBA sound pressure level
- Adjustable external static pressure
- Optional discharge flanger available
- Drain up pump with 750mm lift fitted as standard



FXDQ-PB/FXDQ-NB									
Indoor Units			20PB	25PB	32PB	40NB	50NB	60NB	
Capacity	Cooling	kW	2.20	2.80	3.60	4.50	5.60	7.10	
	Heating	kW	2.50	3.20	4.00	5.00	6.30	8.00	
Power input	Cooling	kW	0.086		0.089	0.160	0.165	0.181	
	Heating	kW	0.067		0.070	0.147	0.152	0.168	
Dimensions	(Height x Width x Depth)	mm	200x700x620			200x900x620		200x1,100x620	
Weight		kg	23.0			27.0	28.0	31.0	
Air Flow Rate	Cooling	HH/H/L	8.0 / 7.2 / 6.4			10.5 / 9.5 / 8.5	12.5 / 11.0 / 10.0	16.50 / 14.5 / 13.00	
External Static Pressure	High/Standard	Pa	30 / 10			44 / 15			
Sound Pressure	Cooling	HH/H/L	33.0 / 31.0 / 29.0			34.0 / 32.0 / 30.0	35.0 / 33.0 / 31.0	36.0 / 34.0 / 32.0	
Refrigerant			R-410A						
Power Supply			1~/220-240V/50Hz						
Piping connections	Liquid (OD)/Gas/Drain (OD)	mm	6.4 / 12.7 / 26.0					9.5 / 15.9 / 26.0	