

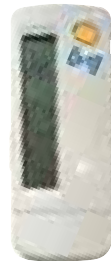


FUYP

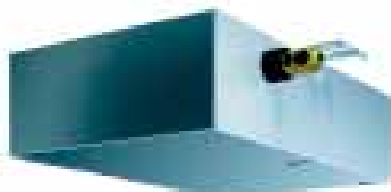
4-WAY BLOW CEILING SUSPENDED UNIT



BRC1C517



BRC7C529W/528W



BEV-KVE

- Group control with other VRV indoor units
- Cool/heat selection available
- To prevent cold draught at hot start, defrost and oil return in heating
- 5m maximum distance between FUYP unit and junction box
- Air can be discharged in any of four directions

- Possibility to shut one or two flaps for easy installation in corners



- Auto-swing mechanism ensures even room air and temperature distribution
- Air flow distribution for ceiling heights up to 3.5m

- Air can be discharged at 5 different angles between 0 and 60 degrees.



- Extremely quiet in operation both indoors and outdoors
- The air filter, drain pan and heat exchanger fin are mildew proof and anti-bacterial treated
- Drain-up pump with increased lift of 500mm

Ideal for installation in new or existing buildings



FUYP - BV17

				71	100	125
Cooling capacity			kW	7.09	9.99	12.48
Heating capacity			kW	7.7	11.0	14.0
Power input	Cooling	W		180	289	289
	Heating	W		160	269	269
Power supply			1 ~, 50Hz, 230V			
Dimensions	HxWxD	mm		165x895x895	230x895x895	230x895x895
Weight			kg	25	31	31
Colour			white			
Sound pressure level	High	dB(A)		40	43	44
	Low	dB(A)		35	38	39
Sound power level	High	dB(A)		56	59	60
	Low	dB(A)		51	54	55
Air flow rate	High	m³/h		1,140	1,740	1,920
	Low	m³/h		840	1,260	1,380
Air filter			resin net with mold resistant			
Piping connections	Liquid	Flare	mm	9.5	9.5	9.5
	Gas	Flare	mm	15.9	19.1	19.1
	Drain	Flare	mm	external diameter 26, internal diameter 20		
Heat insulation			heat resistant foamed polyethylene, regular foamed polyethylene			
Safety devices			fan motor thermal protector			

Notes: • Nominal cooling capacities are based on: indoor temperature: 27°CDB, 19°CWB • outdoor temperature: 35°CDB, 24°CWB
 • Nominal heating capacities are based on: indoor temperature: 20°CDB, 15°CWB • outdoor temperature: 7°CDB, 6°CWB
 • Capacities are net including a deduction for cooling (an addition for heating) for indoor fan motor heat

ACCESSORIES

FUYP - BV17

				71	100	125
Wired remote control					BRC1C517	
Infrared remote control	Cooling only				BRC529W	
	Heat pump				BRC528W	
Sealing member of air discharge outlet				KDBHJ49F80		KDBHJ49F140
Air discharge decoration panel				KDBTJ49F80		KDBTJ49F140
Vertical flap kit				KDGJ49F80		KDGJ49F140
Replacement long life filter					KAFJ495F140	
L-type connection piping kit				KHFJ49F80		KHFJ49F140

JUNCTION BOX FOR CONNECTION TO VRV OUTDOOR UNIT

BEV-KVE

				71	140
Power input	Cooling			169	259
	Heating			149	239
Power supply			VE	1 ~, 50 Hz, 230V	
Dimensions	HxWxD	mm		100x350x225	
Weight			3.0	3.5	
Casing			galvanised steel plate		
Sound absorbing thermal insulation			flame and heat resistant foamed polyethylene		
Unit connection			ø 9.5 / ø 15.9		ø 9.5 / ø 19.1
Header connection			ø 6.4 / ø 12.7		-