



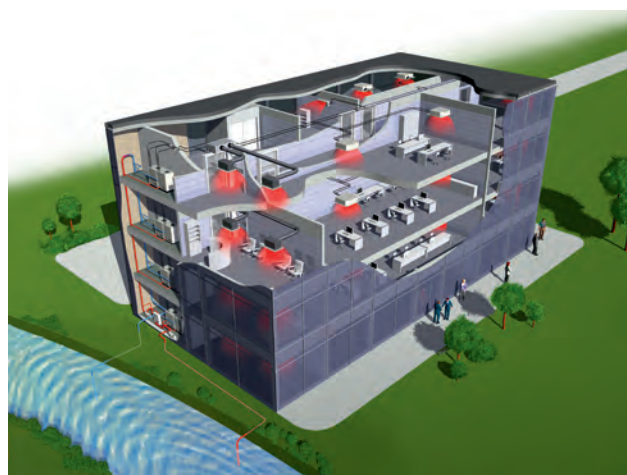
RWEYQ-PR

Geothermal application VRV®III water cooled inverter heat pump



RWEYQ10PR

- Heating with ground sourced water as a renewable energy source!
 - Groundwater remains at a relatively constant temperature during the year
 - Superior efficiency remains even at extreme outdoor temperatures
 - Uses renewable energy: ground water, water from a lake, water from rivers
- Extension of the operation range down to -10°C in heating
 - Add ethylene glycol to the water when the water inlet temperature is lower than 5°C
 - No multi combinations possible
 - Heat Pump and Heat Recovery systems



HEAT PUMP AND HEAT RECOVERY				INVERTER	
Outdoor Units				8	10
Independent Unit	Outdoor Unit			RWEYQ8PY1R	RWEYQ10PY1R
Capacity	Cooling		kW	22.4	26.7
	Heating		kW	25.0	31.5
Dimensions	Unit	Height	mm	1,000	
		Width	mm	780	
		Depth	mm	550	
Weight	Unit		kg	149	150
Sound Pressure (Nominal)	Cooling		dBA	50	51
Inlet Water Temperature	Cooling		°C	10~45	
	Heating		°C	-10~45	
Refrigerant				R-410A	
Power Supply				3~/400V/50Hz	
Piping connections	Liquid (OD)	HP / HR	mm	9.52 / 9.52	
	Gas	HP / HR	mm	- / 19.1	
	Discharge gas	HP / HR	mm	19.1 / 15.9	
	Max total length		m	300	
Max n° of indoor units to be connected				13	16